



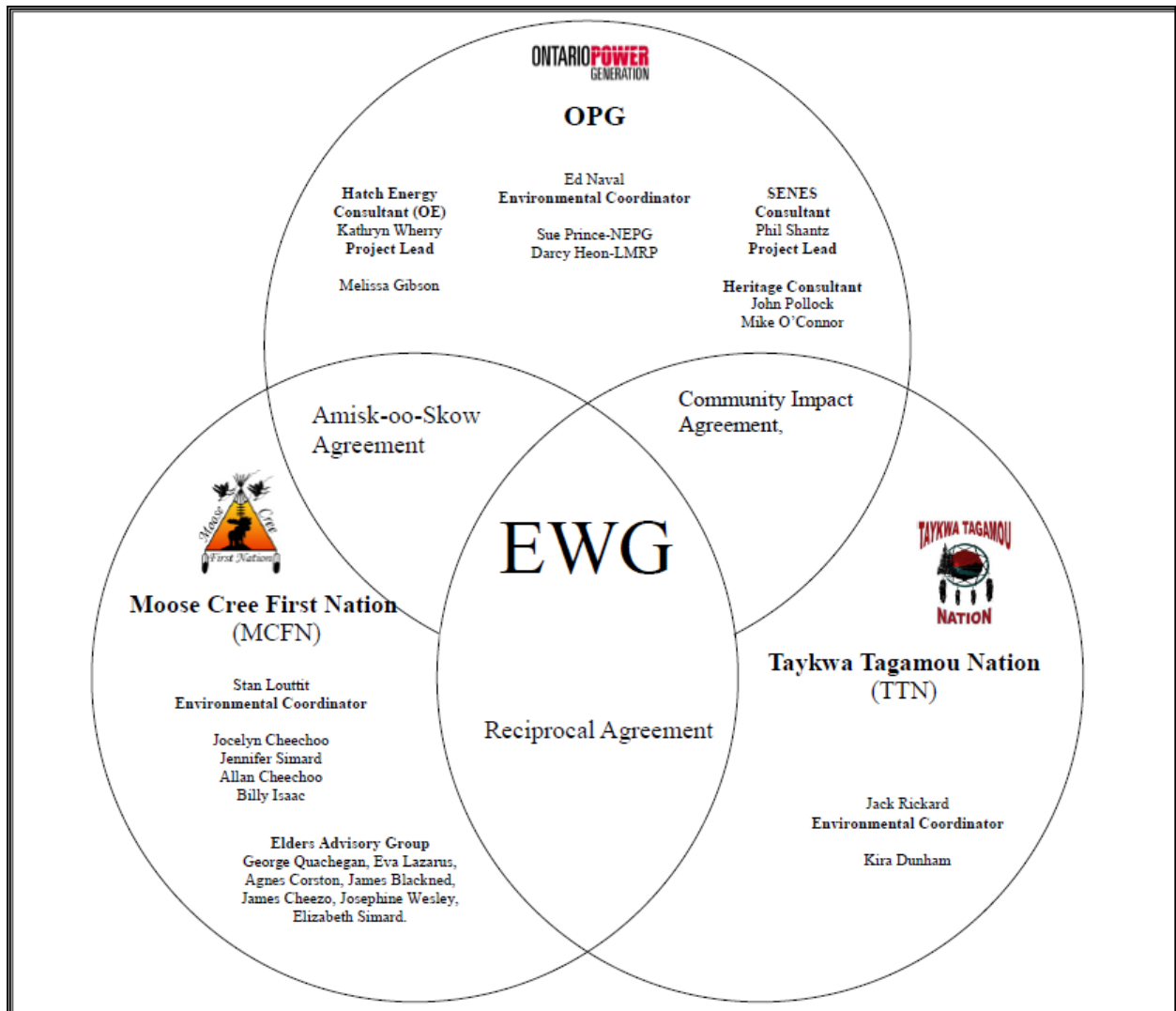
Environmental Working Group

Monthly Report

September 2011

ENVIRONMENTAL WORKING GROUP

Relationship Organizational Chart



ACTIONS COMPLETED

- Weekly Environmental Working Group (EWG) and EWG/Kiewit – Alarie, a Partnership (KAP) meetings.
 - The EWG review its Action Items that include priority permit reviews, and deliverables to the Mattagami Extensions Coordinating Committee (MECC).
 - KAP gives EWG a construction up date every week and discusses any upcoming issues and/or urgent permit reviews.
 - Specific items that were discussed are below.
- Preparation for Environmental Effects Monitoring Workshop – Continuing coordination for confirmation of date and availability of presenters. Continuing coordination of logistics for workshop. Draft revision of the Fisheries portion of EEM Workshop Framework and Plan to update and reflect EWG and OPG (fisheries biologists) comments and most recent information. The workshop is now proposed to be on November 9 and 10, 2011.
- Ongoing discussions and review of Smoky Falls Wet Tailrace Excavation Application with stakeholders including the Fish Habitat Compensation Plan. Revision with KAP regarding KAP's proposed changes and the government stakeholder comments and requests to consider and include additional information regarding the construction methods proposed in the Smoky Falls Wet Tailrace Excavation Application.
- Ongoing review and compilation of Traditional Ecological Knowledge (TEK) for the Lower Mattagami River Project.
- Presentation of the Mercury in Fish Flesh Summary Report and the Fish Habitat Assessment Report to the MECC and some members of the EWG.
- Revision of Cost Benefit Analysis of Mitigating and Reducing Spill in Adam Creek and sent back to EWG for further discussion.

ACTIONS TO BE COMPLETED FOR 2011

	Jan	Feb	Mar	Apr	May	June	July	Aug	Sept	Oct	Nov	Dec
Draft of Traditional Ecological Knowledge in relation to the Lower Mattagami River Project.												
Environmental Effects Monitoring Workshop												
Environmental Assessment (EA) Variances – EWG Review and Submission to MECC												
EA Terms and Conditions Environmental Compliance Plan – EWG Review and Submission to MECC.												
EWG Terms of Reference (ToR) – Submission to MECC												
EWG Work Plan – Submission to MECC												
EWG Environnemental Due Diligence Audit #1												

	Jan	Feb	Mar	Apr	May	June	July	Aug	Sept	Oct	Nov	Dec
Environmental Audit – Accreditation Training												
EWG presentation to the MECC the LMRP "Operations Report" (Condition 4(a) of EA T&Cs).												
The MECC were presented the draft "Fish Habitat Assessment Report", and "Baseline Fish Methyl Mercury Report" (Condition 4b. of EA T&Cs) by Hatch.												
The MECC were presented the draft "Cost Benefit Analysis of Mitigating and Reducing Adam Creek Spill" (Condition 4(c) and (e) of EA T&Cs) by Hatch.												
EWG present to the MECC the methods and means of ensuring that restrictions on hunting and fishing (Condition 5(a) and (c) of EA T&Cs).												TBD*
EWG present to the MECC "Terrestrial Habitat Restoration Downstream of Kipling GS" (Condition 5b. of EA T&Cs).												TBD*
EWG present to the MECC a Public Information Program to communicate the results of fish methyl mercury baseline reports (Condition 7(a) and (b) of EA T&Cs).												TBD*
EWG present to the MECC the cumulative effects data developed during the Federal EA process (Condition 8(a) and (b) of EA T&Cs).												TBD*
EWG present to the MECC the results and recommendations of periodic re-evaluations (Condition 10 of EA T&Cs).												TBD in 2012
EWG present to the MECC "Hydroelectric Generating Facilities Decommissioning Plan" (Condition 11(a) of EA T&Cs).												TBD in 2012
EWG present to the MECC "The Noise Protocol Plan" (Condition 18 of EA T&Cs).												TBD in 2012

*The MECC will communicate to the EWG the priority list of reports to be presented.

Construction**General**

- Permanent Camp – The mud room trailers installation is complete. As of the end of September, 738 of approximately 800 rooms were available on site at the permanent camp.
- A dome is being erected to cover the wastewater treatment plant for the winter.

Smoky Falls

- Concrete pours for the service bay and draft tube areas continued.
- Stabilization of the rock face on the east side is mostly complete.
- Remedial work in the area of the Smoky Falls Unit 2 / Unit 3 bullnose continues. Many rock anchors have been placed to stabilize the rock in the area prior to completing the Unit 3 excavation, with four anchors outstanding at the end of September (Figure 1).
- Shotcrete operations in Zones 2 and 3 (East wall to Powerhouse and east wall from Powerhouse to Diamond Road) are nearing completion with only minor work remaining incomplete.
- Excavation operations in the tailrace continue to progress (Figure 2).
- The erection of tower cranes #2 and 3 was completed and both are now in operation.



Figure 1: Overview of Smoky Falls



Figure 2: Excavation at the Smoky Falls Tailrace

Little Long

- Concrete work is progressing well with various pours complete and others in progress. Although Little Long is currently behind schedule by approximately two weeks, work is advancing at an accelerated pace and is expected to be back on plan before year end.
- Recently completed concrete pours include the G3 penstock intake walls and invert.
- The central draft tube pier and the east and west tailrace walls were poured.
- The prefabricated curved wood forms for the draft tube have been installed and rebar installation around the forms is in progress in preparation for concrete (Figure 3).



Figure 3: Curved wood forms for the draft tube at Little Long

Harmon

- Post-tensioning anchors were installed in cofferdam Cell #2.
- G3 intake walls were cleaned of vegetation and pressure washed.
- The pier tie-in was successfully installed during a station outage and dewatering started on September 21st.
- The cofferdam was successfully dewatered on September 29th, and excavation of overburden and bedrock exposure is under way in the cofferdam area (Figure 4).



Figure 4: Kipling Dewatered



Figure 5: Cleaning the Footprint of Cell 2 and 3 at Kipling

Kipling

- With the completion of the sheet pile installation at the end of August, fish salvage operations began in cofferdam Cell #1 and were successfully completed.
- 190 m3 of first stage tremie concrete was placed in cofferdam Cell #1, followed by tote bags full of sand.
- 254 m3 of tremie concrete was placed in cofferdam Cell #1 as part of the second stage concrete and the Cell was backfilled with sand.
- Cleaning of the footprint of cofferdam Cells #2 and #3 continues, and preparations for the installation of Cell #3 are under way (Figure 5).

Monthly Summary – September 2011

SPILLS			
No. of Spills:		8; Spill Reports 152-159 (see Figure 6 for LMRP spills breakdown).	
Classification of Spills:		<u>Project Classification</u> Minor – 6 Moderate – 1 Major – 0 To Water - 1 <u>MOE Classification</u> Non-reportable - 8 Reportable to MOE <ul style="list-style-type: none">- Class C – 1- Class B – 0- Class A – 0	
<u>Reportable Spills</u>			
No.	Quantity /Product Spilled	Spill Site	Reason for being Reportable
1	2 L/ Vegetable Based Hydraulic Oil	Kipling Generating Station	In-water
Project Classification (KAP) Minor: ≤ 10L Moderate: Between 10L and 100L Major: ≥100L To Water: Any amount is reportable to the MOE (See Figure 7: KAP Spills Response Flowchart)			MOE Classification Non-reportable: < 100L Reportable to MOE <ul style="list-style-type: none">• Class C - Less Serious• Class B – Serious Class A – Very Serious

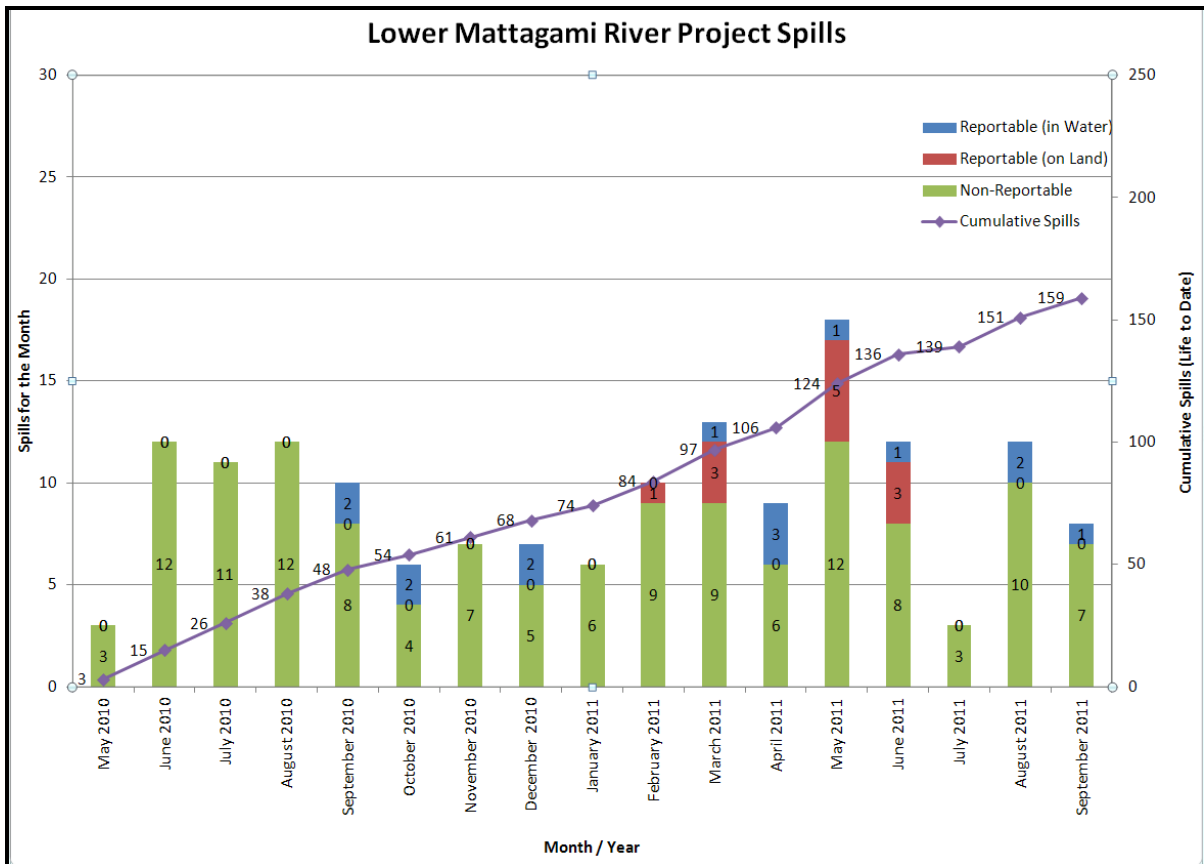


Figure 6: Lower Mattagami River Project spills

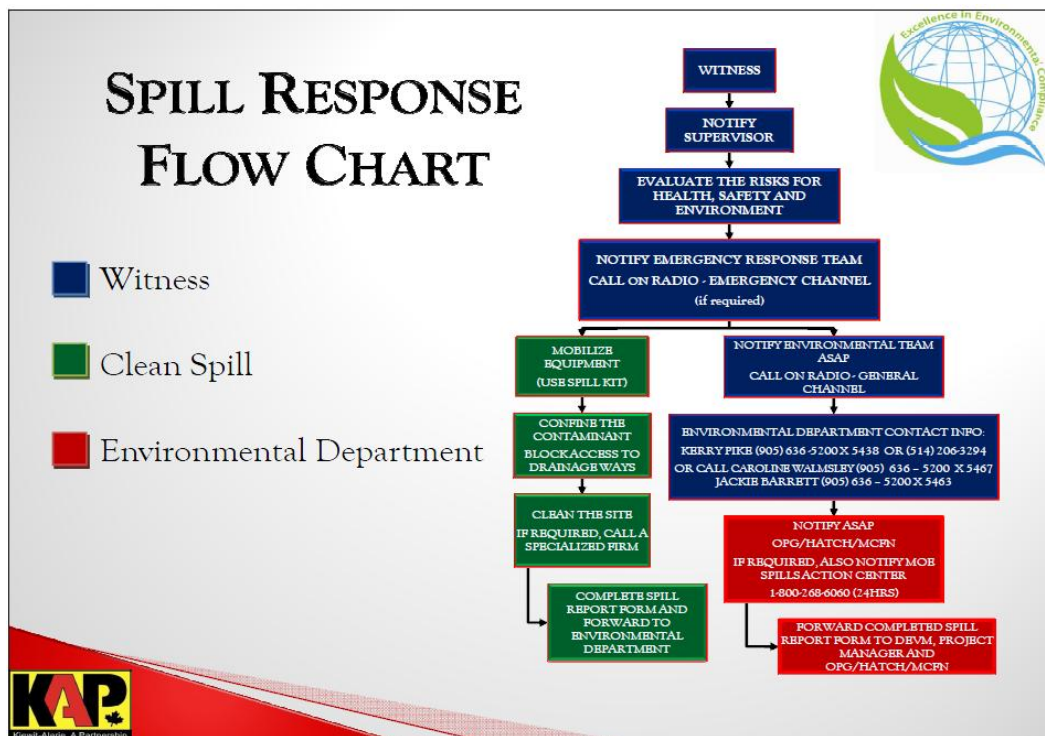


Figure 7: KAP Spills Response Flowchart

PERMIT AND APPROVAL REVIEW			
No. Reviewed:	3	List:	<ul style="list-style-type: none">• Work Permit Application for Work on Permanent Transmission Line• Smoky Falls Wet Tailrace Excavation
No. Sent to KAP:	2	List:	<ul style="list-style-type: none">• Work Permit Application for Work on Permanent Transmission Line• Smoky Falls Wet Tailrace Excavation
REQUESTS FOR INFORMATION (RFIs)			
No. Reviewed:	1	List:	RFI-OWN - Smoky Falls Powerhouse - Conditions of Lakes and Rivers Improvement Act Approval.
No. Sent to KAP:	0	List:	N/A
See figures 8 to 11 below for site location of the permits that have been or are pending approval.			

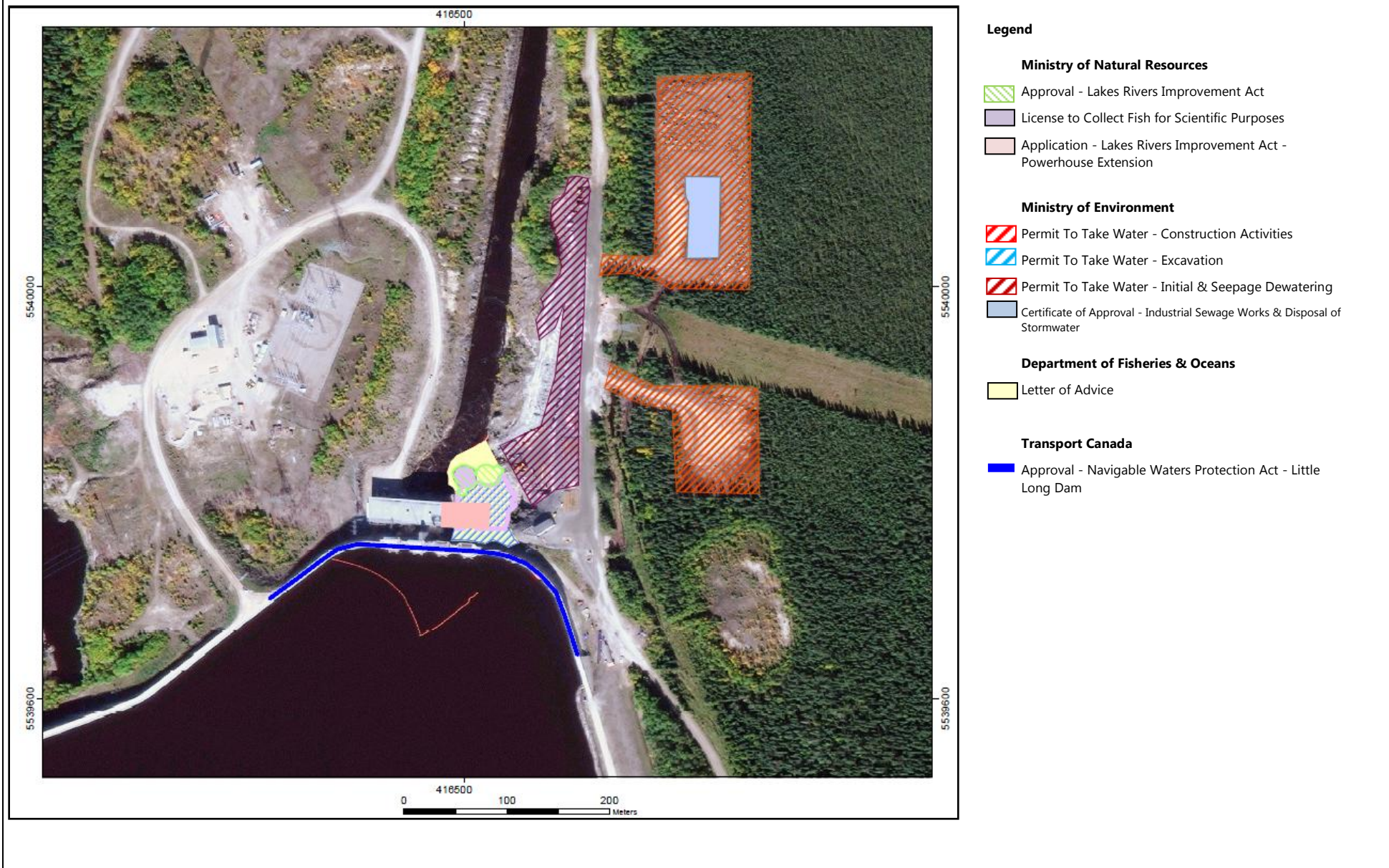
Figure 8: Little Long GS - Permits

Figure 9: Smokey Falls GS - Permits

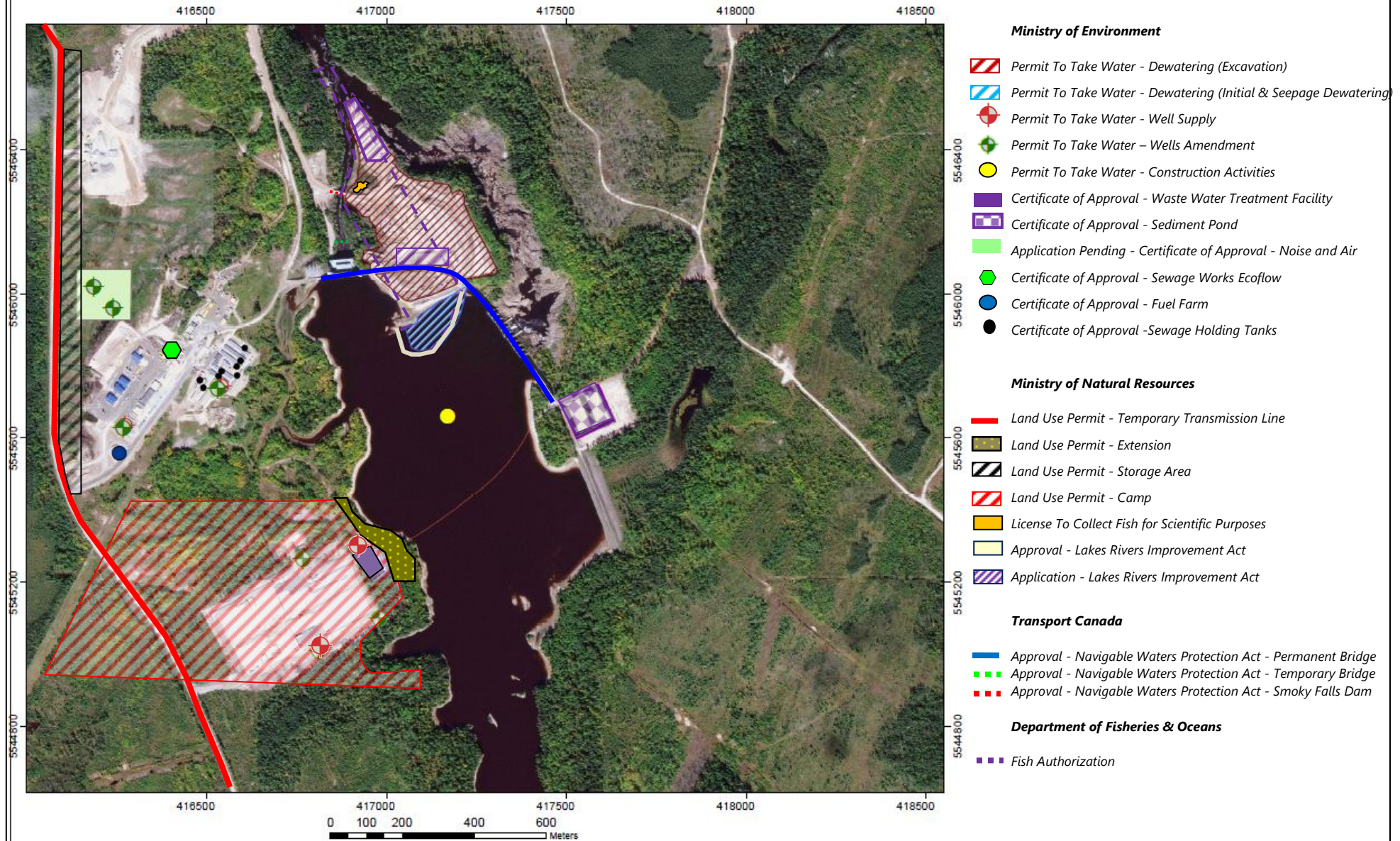


Figure 10: Harmon GS - Permits

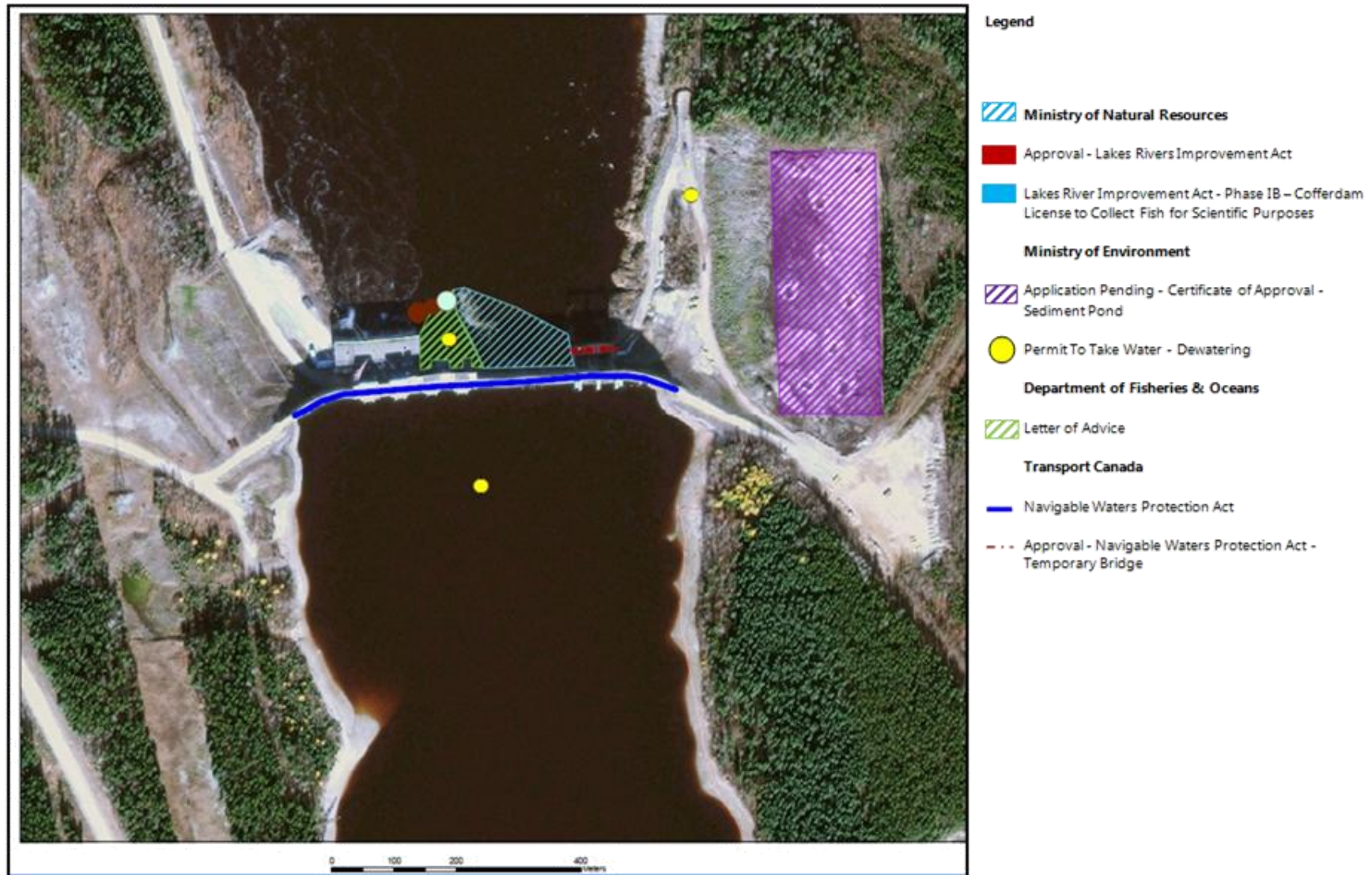
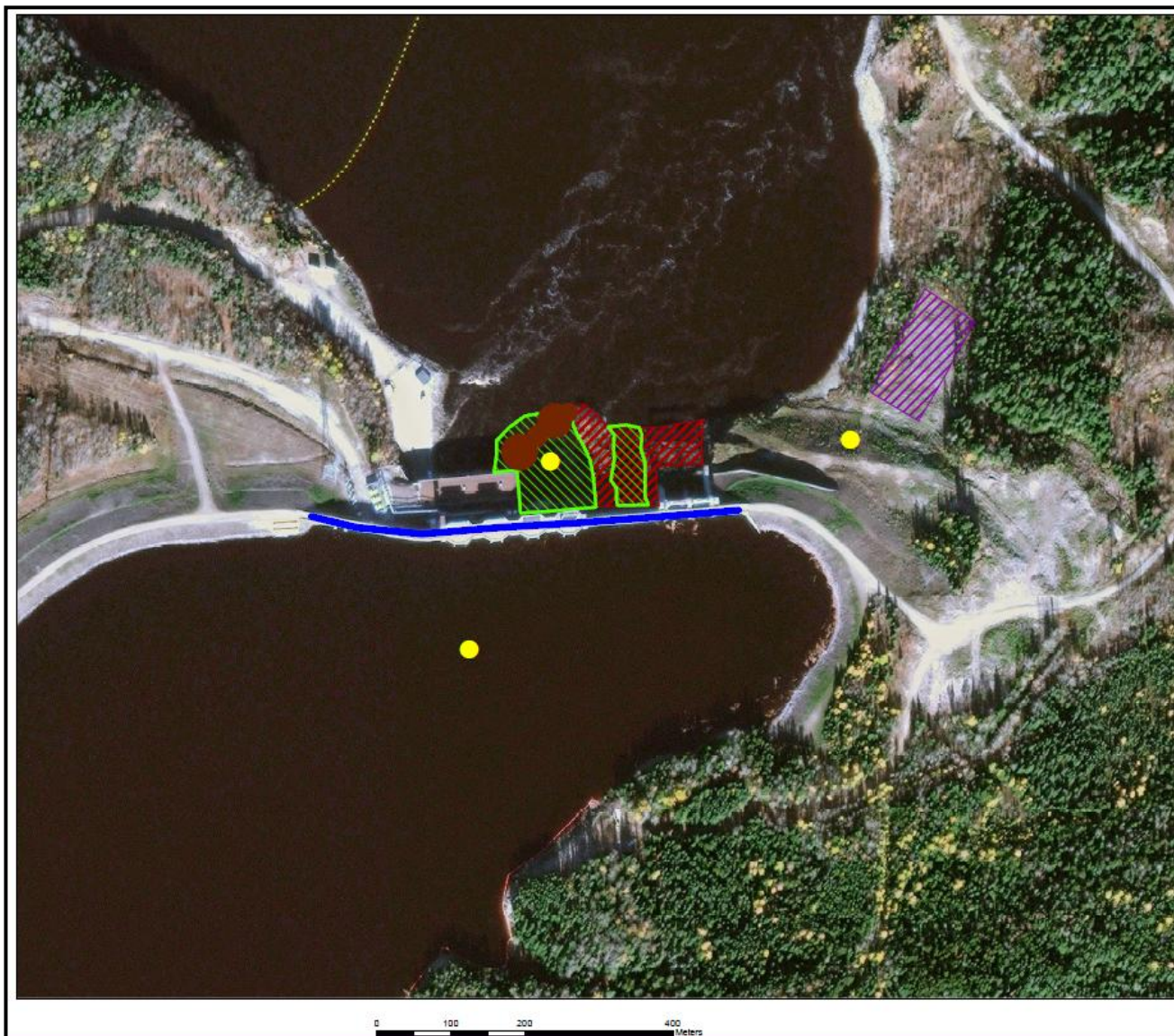




Figure 11: Kipling GS - Permits




Legend



Ministry of Natural Resources

-  Approval Phase 1A - Marine Access Pad
-  Application Pending - Lakes Rivers Improvement Act - Phase II


Department of Fisheries & Oceans

-  Letter of Advice

Ministry of Environmental

-  Application Pending for Certificate of Approval - Sediment Pond
-  Permit To Take Water - Dewatering

Transport Canada

-  Approval - Navigable Waters Protection Act - Kipling Dam

Issues and Concerns

- An alternate date was required for the Environmental Effects Monitoring Workshop due to the availability of the aquatics expert.

Action Required: The Workshop was moved from October to November and another aquatics expert was required.

- Members of the EWG requested a table to be developed that would outline where the EWG was in its review process for the reports associated with the EA Terms and Conditions.

Action Required: Hatch to develop a table based on the review process in the EWGs Terms of Reference that outlines where the EWG is in its review of the reports associated with the EA Terms and Conditions.