



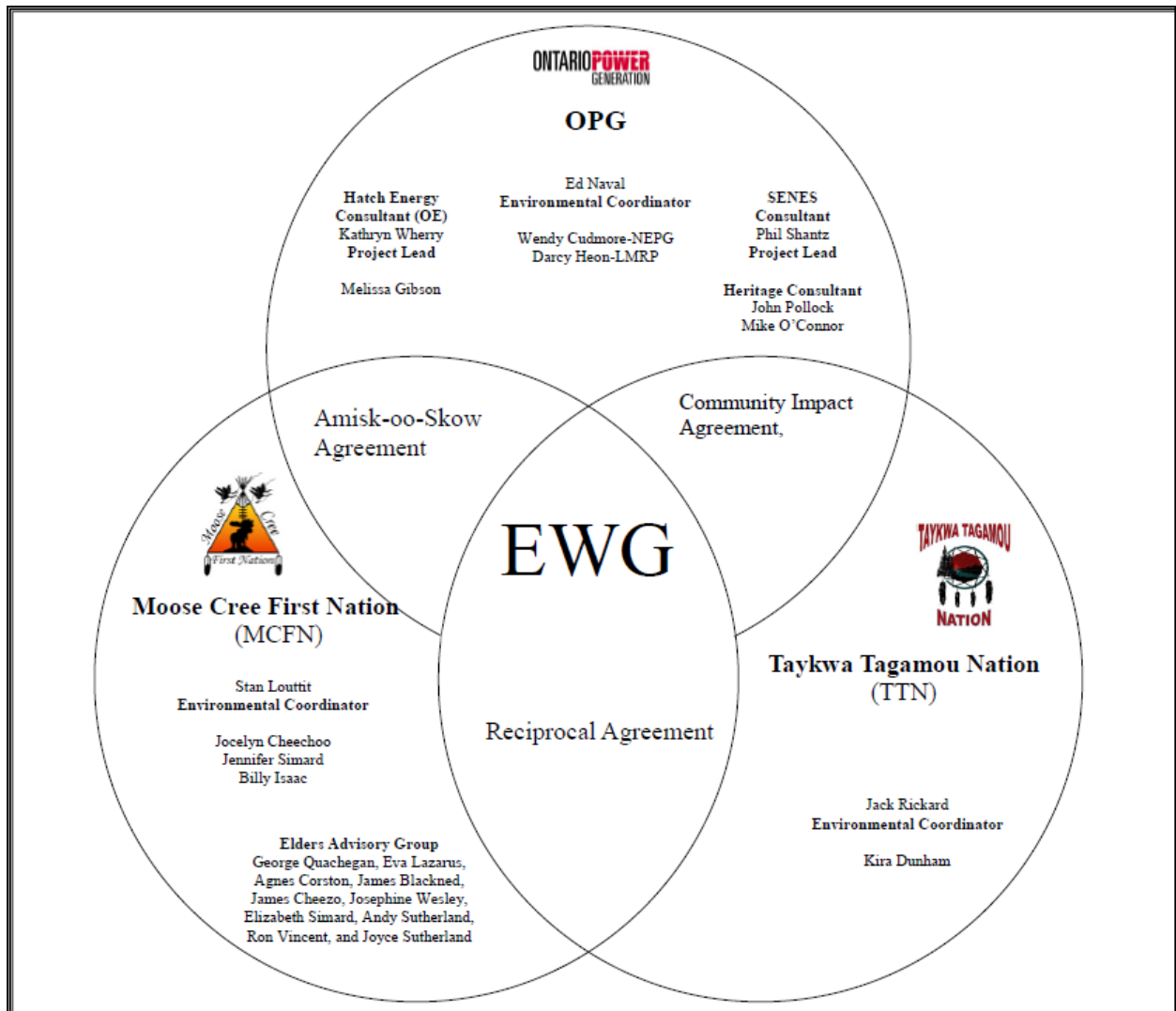
Environmental Working Group

Monthly Report

October 2011

ENVIRONMENTAL WORKING GROUP

Relationship Organizational Chart



ACTIONS COMPLETED

- Weekly Environmental Working Group (EWG) and EWG/Kiewit – Alarie, a Partnership (KAP) meetings.
 - The EWG review its Action Items that include priority permit reviews, and deliverables to the Mattagami Extensions Coordinating Committee (MECC).
 - KAP gives EWG a construction up date every week and discusses any upcoming issues and/or urgent permit reviews.
 - Specific items that were discussed are below.
- Preparation for Environmental Effects Monitoring Workshop – Continuing coordination of logistics for workshop and meetings with presenters to confirm agenda and coordinate presentations. Hatch and OPG made revisions to the Draft Environmental Effect Monitoring Plan. Discussions with OPG fisheries biologists and NEPG representatives to discuss plan forward for aquatic monitoring. Discussions with government stakeholders to ascertain any issues or concerns moving into the workshop.
- Ongoing discussions and review with KAP of the Fish Habitat Compensation Plan for the Smoky Falls Wet Tailrace Excavation Application Revision with KAP regarding KAP's proposed changes and the government stakeholder comments and requests to consider and include additional information regarding the construction methods proposed in the Smoky Falls Wet Tailrace Excavation Application.
- Ongoing review and compilation of Traditional Ecological Knowledge (TEK) for the Lower Mattagami River Project.
- Presentation of the Baseline Methyl Mercury Reports and Mercury in Fish Flesh Summary Report to the MECC and EWG.
- Revision of Cost Benefit Analysis of Mitigating and Reducing Spill in Adam Creek based on further EWG comments. To be sent for further discussion.

ACTIONS TO BE COMPLETED FOR 2011

	Jan	Feb	Mar	Apr	May	June	July	Aug	Sept	Oct	Nov	Dec
Draft of Traditional Ecological Knowledge in relation to the Lower Mattagami River Project.												
Environmental Effects Monitoring Workshop												
Environmental Assessment (EA) Variances – EWG Review and Submission to MECC												
EA Terms and Conditions Environmental Compliance Plan – EWG Review and Submission to MECC.												
EWG Terms of Reference (ToR) – Submission to MECC												
EWG Work Plan – Submission to MECC												
EWG Environnemental Due Diligence Audit #1												

	Jan	Feb	Mar	Apr	May	June	July	Aug	Sept	Oct	Nov	Dec
Environmental Audit – Accreditation Training												
EWG presentation to the MECC the LMRP "Operations Report" (Condition 4(a) of EA T&Cs).												
The MECC were presented the draft "Fish Habitat Assessment Report", and "Baseline Fish Methyl Mercury Report" (Condition 4b. of EA T&Cs) by Hatch.												
The MECC were presented the draft "Cost Benefit Analysis of Mitigating and Reducing Adam Creek Spill" (Condition 4(c) and (e) of EA T&Cs) by Hatch.												
EWG present to the MECC the methods and means of ensuring that restrictions on hunting and fishing (Condition 5(a) and (c) of EA T&Cs).												TBD*
EWG present to the MECC "Terrestrial Habitat Restoration Downstream of Kipling GS" (Condition 5b. of EA T&Cs).												TBD*
EWG present to the MECC a Public Information Program to communicate the results of fish methyl mercury baseline reports (Condition 7(a) and (b) of EA T&Cs).												TBD*
EWG present to the MECC the cumulative effects data developed during the Federal EA process (Condition 8(a) and (b) of EA T&Cs).												TBD*
EWG present to the MECC the results and recommendations of periodic re-evaluations (Condition 10 of EA T&Cs).												TBD in 2012
EWG present to the MECC "Hydroelectric Generating Facilities Decommissioning Plan" (Condition 11(a) of EA T&Cs).												TBD in 2012
EWG present to the MECC "The Noise Protocol Plan" (Condition 18 of EA T&Cs).												TBD in 2012

*The MECC will communicate to the EWG the priority list of reports to be presented.

Construction**General**

- Permanent Camp – Installation of skirting around all dorms is progressing well. Installation of the recreation trailers continues. 784 of approximately 800 rooms are available on site.
- The dome being erected to cover the wastewater treatment plant for the winter was completed.

Smoky Falls

- Concrete pours for the service bay, powerhouse, intake, and draft tube areas continued, with a total of 4,897 m³ of concrete poured from October 01 to October 28 (Figure 1).
- Work on the winter shelter is progressing on schedule, with foundations being placed in preparation for structural steel erection.
- Remedial work in Zone 6 (the area of the Smoky Falls Unit 2 / Unit 3 bullnose) is complete. The Unit 3 mud slab was successfully poured, and concrete operations are now under way on Unit 3.
- Excavation operations in the wet tailrace continue to progress. The PVC liner for the downstream face of the Diamond Road rock plug was successfully installed. Wet drilling has started, the first blast occurred on October 22 (Figure 2).



Figure 1: Overview of work at Smoky Falls



Figure 2: Excavation of Smoky Falls Tailrace

Little Long

- Concrete work is progressing well with various pours complete and others in progress.
- The pours around and immediately above the prefabricated curved wood forms for the draft tube have been completed, for a total of 1,327 m³ of concrete (Figure 3).
- Rock bolts and shotcrete were applied in some areas of the dewatered zone to provide worker protection.

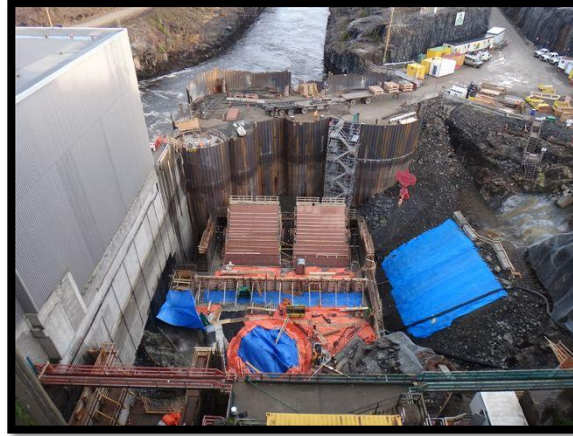


Figure 3: Overview of work at Little Long

Harmon

- Mud removal activities in the future powerhouse area are under way.
- Drilling activities have occurred in the West bullnose area in preparation for blasting. A number of blasts have been taken at the intake.
- KAP shortened the steel stoplogs (at the cofferdam pier tie-in) as they were encroaching into the Harmon G2 draft tube gate slots.
- Rock cleaning and scaling are under way in the intake and powerhouse areas in preparation for concrete operations (Figure 4).
- The first concrete mud slab was poured in the intake on October 18.
- The implementation of water control measures within the dewatered area is complete.



Figure 4: Harmon Penstock Mucking



Figure 5: Kipling Overview of Operations

Kipling

- Cofferdam Cell #1 was completed (Figure 5).
- The steel construction bridge to connect Cell #1 to the shore was found to be 2 metres too short. H-piles were driven into the bedrock within Cell #1, which allowed the bridge to be used in its current configuration.
- Once the H-piles were in place, the bridge was installed and the 2250 crane was moved across the bridge onto Cell #1 on October 20.
- An outage was taken on October 21 to allow the installation of the spud piles for Cell #3.

Monthly Summary – October 2011

Monthly Summary October 2022

SPILLS			
No. of Spills:		9; Spill Reports 160-168 (see Figure 6 for LMRP spills breakdown).	
Classification of Spills:		<u>Project Classification</u> Minor – 6 Moderate – 3 Major – 0 To Water - 0 <u>MOE Classification</u> Non-reportable - 9 Reportable to MOE <ul style="list-style-type: none">- Class C – 0- Class B – 0- Class A – 0	
<u>Reportable Spills</u>			
No.	Quantity /Product Spilled	Spill Site	Reason for being Reportable
0	n/a	n/a	n/a
Project Classification (KAP) Minor: ≤ 10L Moderate: Between 10L and 100L Major: ≥100L To Water: Any amount is reportable to the MOE (See Figure 7: KAP Spills Response Flowchart)			MOE Classification Non-reportable: < 100L Reportable to MOE <ul style="list-style-type: none">• Class C - Less Serious• Class B – Serious Class A – Very Serious

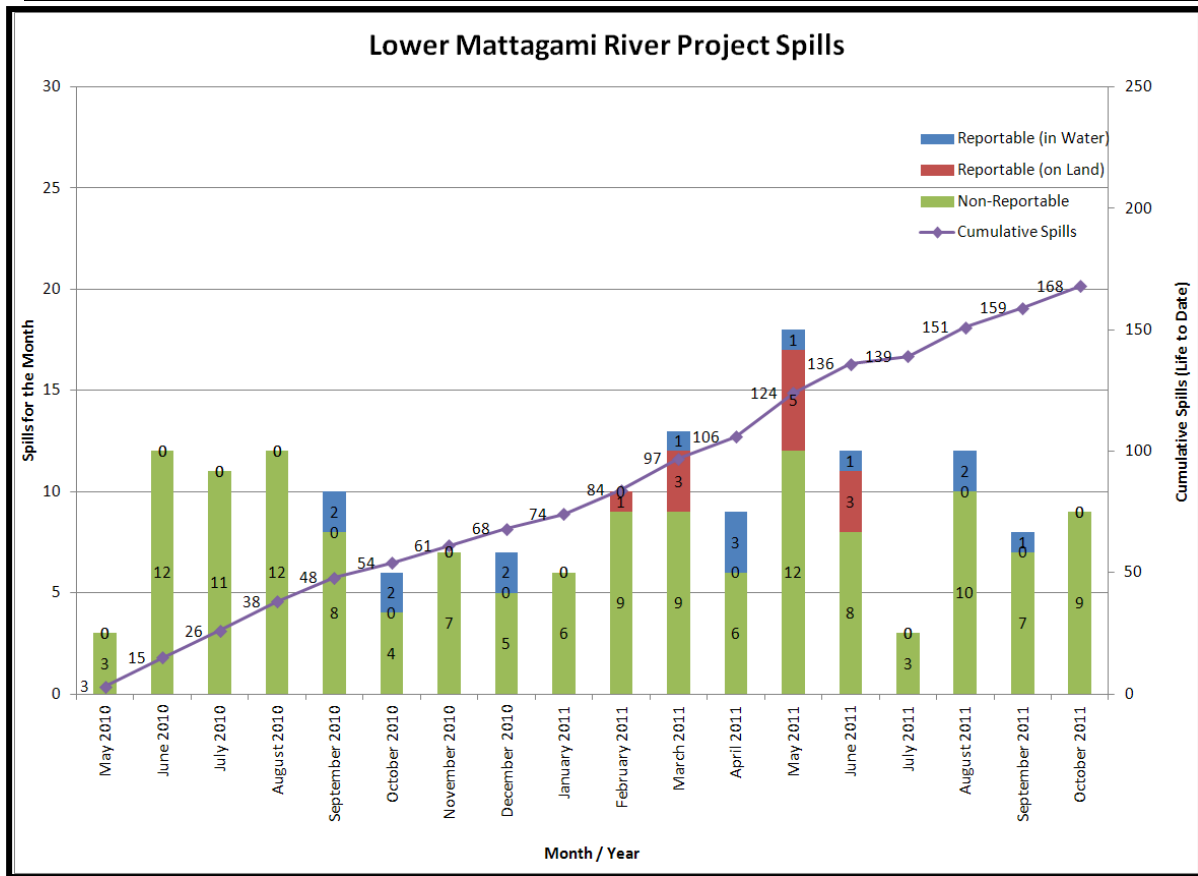


Figure 6: Lower Mattagami River Project spills

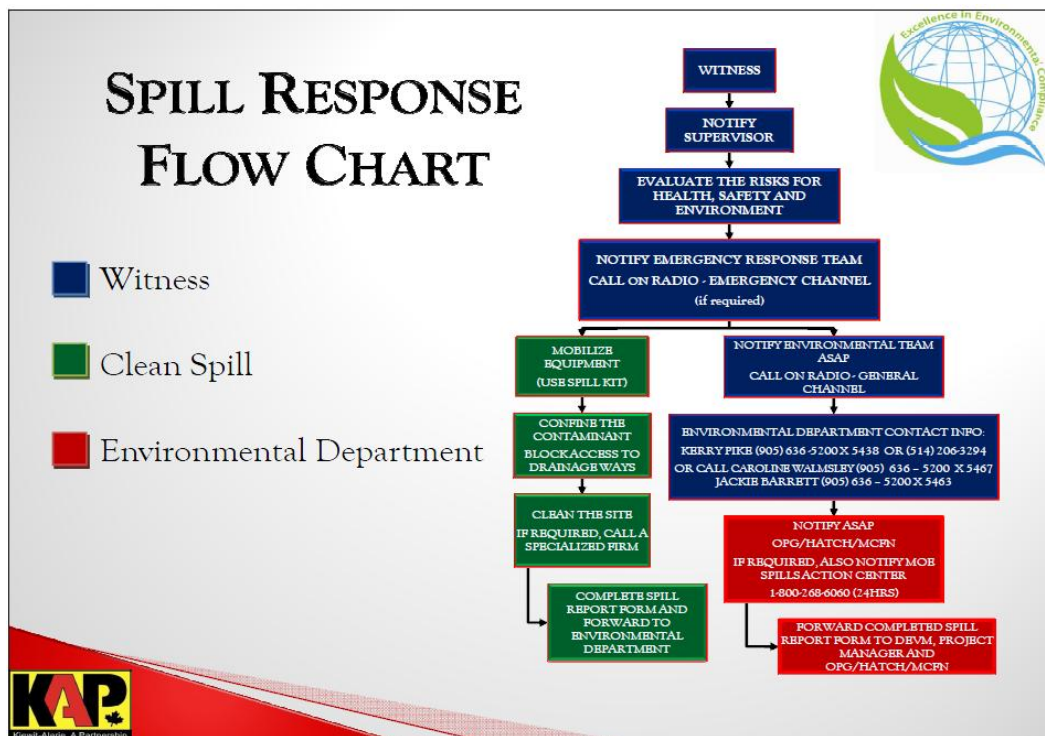


Figure 7: KAP Spills Response Flowchart

PERMIT AND APPROVAL REVIEW			
No. Reviewed:	0	List:	n/a
No. Sent to KAP:	0	List:	n/a
Reports Review			
No. Reviewed for KAP	0	List	n/a
No. Sent to KAP	0	List	n/a
No. Reviewed for MECC	4	List	On-going: <ul style="list-style-type: none"> • Cost Benefit Analysis of Mitigating and Reducing Spill in Adam Creek. • Operation Overview Report. • Baseline Methyl Mercury Reports and Mercury in Fish Flesh Summary Report.
No. Review Completed	0		n/a
REQUESTS FOR INFORMATION (RFIs)			
No. Reviewed:	0	List:	n/a
No. Sent to KAP:	0	List:	n/a
See figures 8 to 11 below for site location of the permits that have been or are pending approval.			

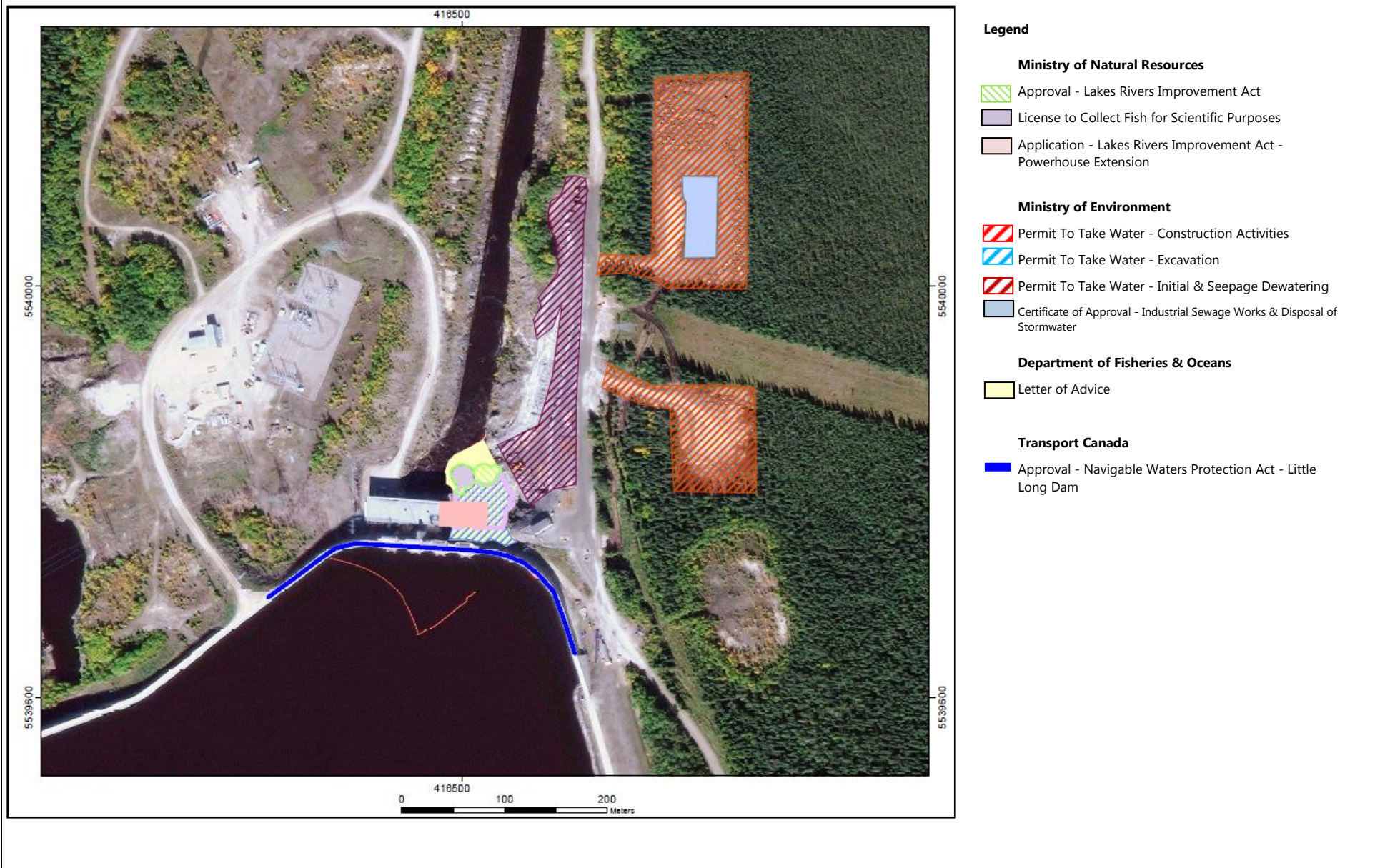
Figure 8: Little Long GS - Permits

Figure 9: Smokey Falls GS - Permits

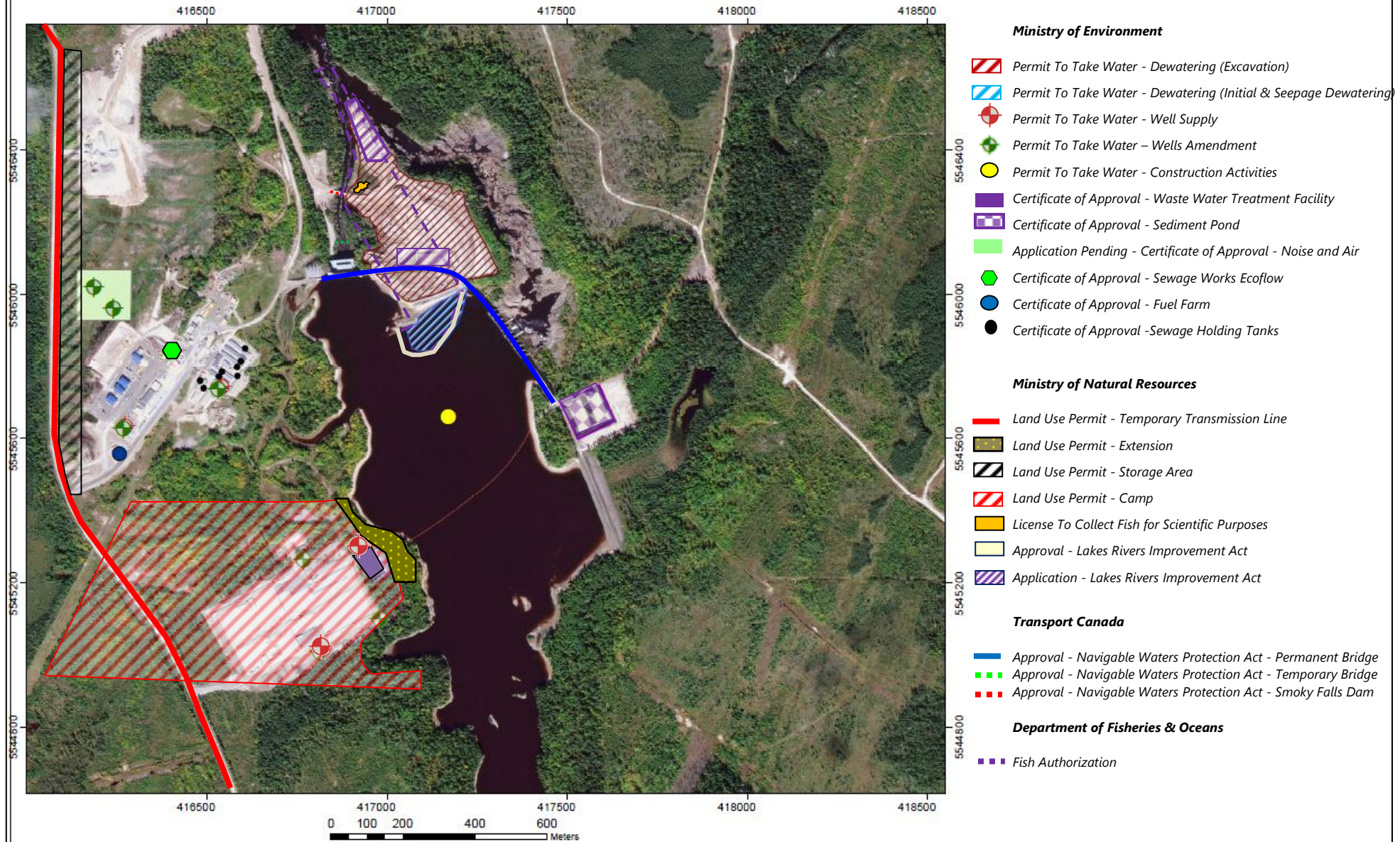


Figure 10: Harmon GS - Permits

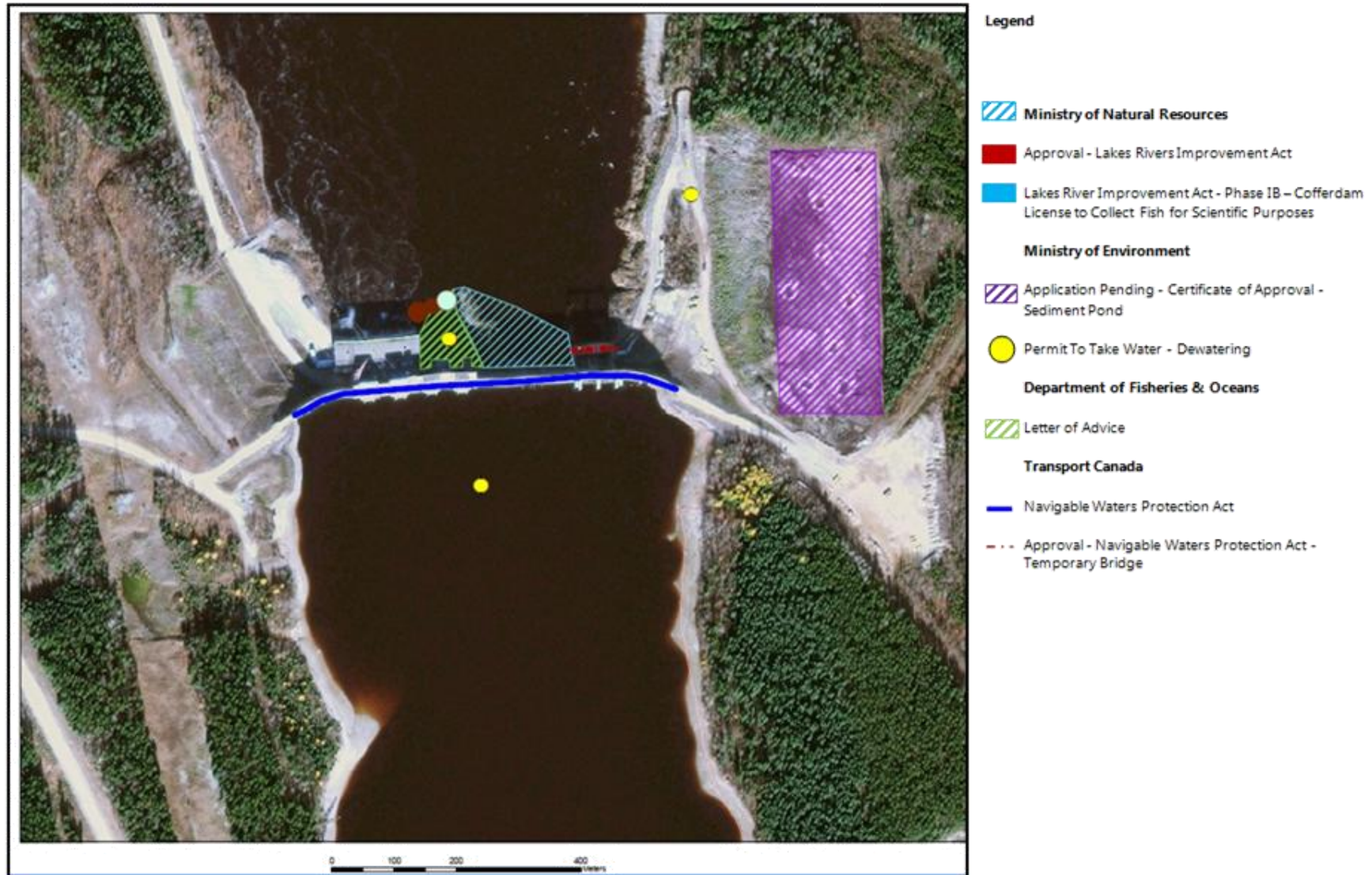
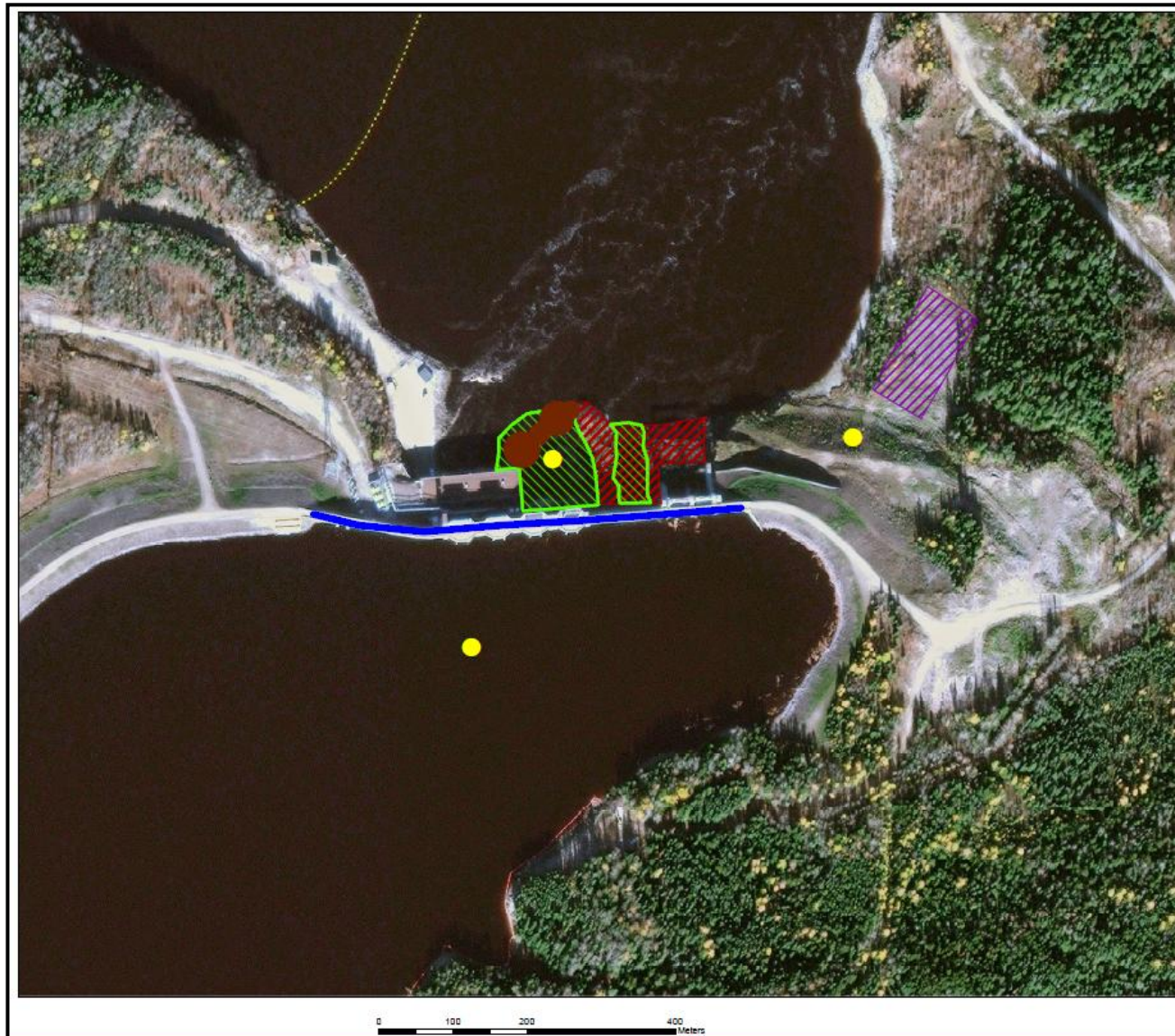




Figure 11: Kipling GS - Permits




Legend



Ministry of Natural Resources

-  Approval Phase 1A - Marine Access Pad
-  Application Pending - Lakes Rivers Improvement Act - Phase II


Department of Fisheries & Oceans

-  Letter of Advice

Ministry of Environmental

-  Application Pending for Certificate of Approval - Sediment Pond
-  Permit To Take Water - Dewatering

Transport Canada

-  Approval - Navigable Waters Protection Act - Kipling Dam

Issues and Concerns

- MCFN members of the EWG were concerned with the methods KAP were using to conduct fish salvage operations within the cofferdam (baited hooks) and within the cofferdam area (electrofishing).

Action Required: The EWG will ask KAP if other alternative methods of fish salvage can be used.

- Members of the EWG were concerned with the number of sediment pond turbidity exceedances reported by KAP.

Action Required: The EWG will ask KAP if it is possible to use proactive measures to lower the number sediment pond turbidity exceedances.

- MCFN members of the EWG conducted a flight survey over the LMRP and were concerned with the discarded turbidity curtains that have not been collected down the river.

Action required: The EWG will ask KAP to collect and dispose of the turbidity curtains appropriately.

- MCFN members of the EWG requested an update on the status of the possible relocation of the anchor and safety boom located within the smoky falls headpond in the area of the MCFN heritage site.

Action required: The EWG will requests an update from OPGs Northeast Plant Group on the status of this issue.