

---

## **Environmental Working Group**

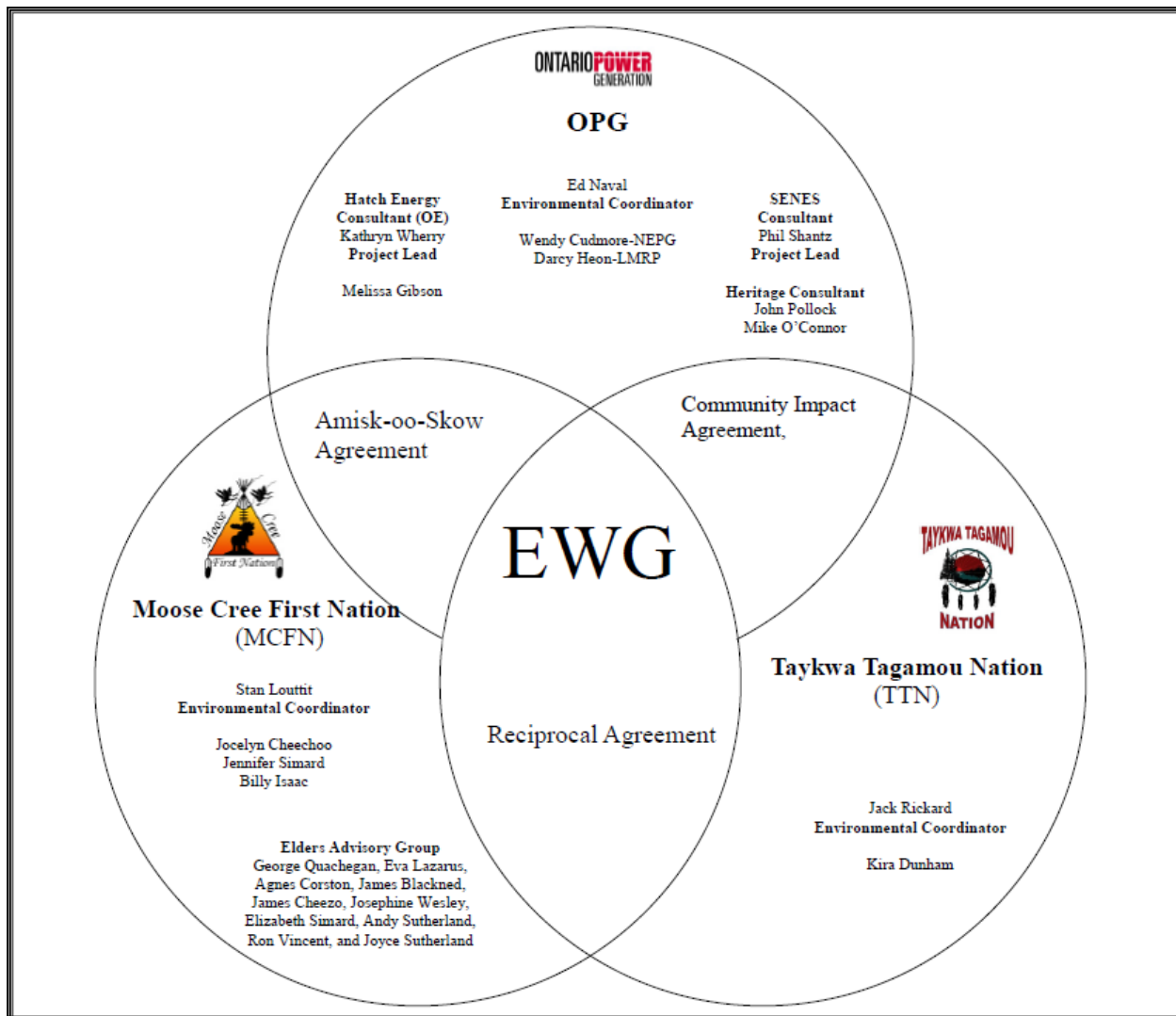
### **Monthly Report**

---

**November 2011**

## ENVIRONMENTAL WORKING GROUP

### Relationship Organizational Chart



- Weekly Environmental Working Group (EWG) and EWG/Kiewit – Alarie, a Partnership (KAP) meetings.
  - The EWG review its Action Items that include priority permit reviews, and deliverables to the Mattagami Extensions Coordinating Committee (MECC).
  - KAP gives EWG a construction up date every week and discusses any upcoming issues and/or urgent permit reviews.
  - Specific items that were discussed are below.
- Environmental Effects Monitoring Workshop – Coordination (logistics and presenters) and holding of the Workshop (Nov. 9-10) Organization and coordination of notes to workshop facilitator for integration into the workshop report.
- Ongoing review and compilation of Traditional Ecological Knowledge (TEK) for the Lower Mattagami River Project.
- Presentation of the Baseline Methyl Mercury Reports and Mercury in Fish Flesh Summary Report to the MECC and EWG.
- Review and revision of Cost Benefit Analysis of Mitigating and Reducing Spill in Adam Creek based on further EWG comments. Currently working on revision No. 4. Ongoing discussions regarding Term and Condition 4 c.
- Operation Overview Report was revised to incorporate EWG comments.

**ACTIONS TO BE COMPLETED FOR 2011**

	Jan	Feb	Mar	Apr	May	June	July	Aug	Sept	Oct	Nov	Dec
Draft of Traditional Ecological Knowledge in relation to the Lower Mattagami River Project.												
Environmental Effects Monitoring Workshop												
Environmental Assessment (EA) Variances – EWG Review and Submission to MECC												
EA Terms and Conditions Environmental Compliance Plan – EWG Review and Submission to MECC.												
EWG Terms of Reference (ToR) – Submission to MECC												
EWG Work Plan – Submission to MECC												
EWG Environmental Due Diligence Audit #1												
Environmental Audit – Accreditation Training												
EWG presentation to the MECC the LMRP “Operations Report” (Condition 4(a) of EA T&Cs).												
The MECC were presented the draft “Fish Habitat Assessment Report”, and “Baseline Fish Methyl Mercury Report” (Condition 4b. of EA T&Cs) by Hatch.												

	Jan	Feb	Mar	Apr	May	June	July	Aug	Sept	Oct	Nov	Dec
The MECC were presented the draft "Cost Benefit Analysis of Mitigating and Reducing Adam Creek Spill" (Condition 4(c) and (e) of EA T&Cs) by Hatch.												
EWG present to the MECC the methods and means of ensuring that restrictions on hunting and fishing (Condition 5(a) and (c) of EA T&Cs).												TBD*
EWG present to the MECC "Terrestrial Habitat Restoration Downstream of Kipling GS" (Condition 5b. of EA T&Cs).												TBD*
EWG present to the MECC a Public Information Program to communicate the results of fish methyl mercury baseline reports (Condition 7(a) and (b) of EA T&Cs).												TBD*
EWG present to the MECC the cumulative effects data developed during the Federal EA process (Condition 8(a) and (b) of EA T&Cs).												TBD*
EWG present to the MECC the results and recommendations of periodic re-evaluations (Condition 10 of EA T&Cs).												TBD in 2012
EWG present to the MECC "Hydroelectric Generating Facilities Decommissioning Plan" (Condition 11(a) of EA T&Cs).												TBD in 2012
EWG present to the MECC "The Noise Protocol Plan" (Condition 18 of EA T&Cs).												TBD in 2012

\*The MECC will communicate to the EWG the priority list of reports to be presented.

## Construction

### General

- Permanent Camp –Installation of the last phase of dormitories was nearing completion at November month-end. Expected occupancy is December 5. 784 of approximately 800 rooms are available on site.



Figure 1: Smoky Falls – Winter Shelter Progress

### Smoky Falls

- Work on the winter shelter has occurred throughout the month of November, with the main structure nearing completion (structural steel erected and more than half the siding and roofing installed) by month-end (Figure 1). Work on the secondary structure over the powerhouse area has started. Four footings were poured within the Bullnose 3 overbreak area to support the secondary structure.
- Concrete pours for the service bay, powerhouse, intake, and draft tube areas continued, with a total of 1,745 m<sup>3</sup> of concrete poured from October 29 to December 2.
- Clearing and grubbing of the switchyard and transmission line footprint between the switchyard and the powerhouse is complete. Drilling and blasting of rock outcroppings has occurred.
- Preparations are under way to begin the reconstruction of the Smoky Falls Unit 2 / Unit 3 bullnose. Drilling for form anchors and the installation of formwork is under way.
- Excavation operations (drill and blast) in the wet tailrace continue to progress. Water level information was collected during a spill test on November 29 and is now being reviewed by SLI.
- Excavation and blasting of the abutments for the permanent bridge has started (Figure 2).



Figure 2: Smoky Falls – Excavating the West Permanent Bridge Abutment

### Little Long

- Concrete work is progressing well, with 2,353 m<sup>3</sup> of concrete poured in the powerhouse area. Work has continued to advance at an accelerated pace and Little Long is almost back on plan, and will be there before year end.



- After some difficulty in getting the G3 intake stop logs to seal properly, KAP managed to obtain an adequate seal using wedges along the springs for better tightness, and the head gate cavity was successfully dewatered.
- Trailers for Andritz staff (mechanical sub-contractors) were brought to the site, in preparation for future concrete pours and to begin operational planning and coordination (Figure 3).

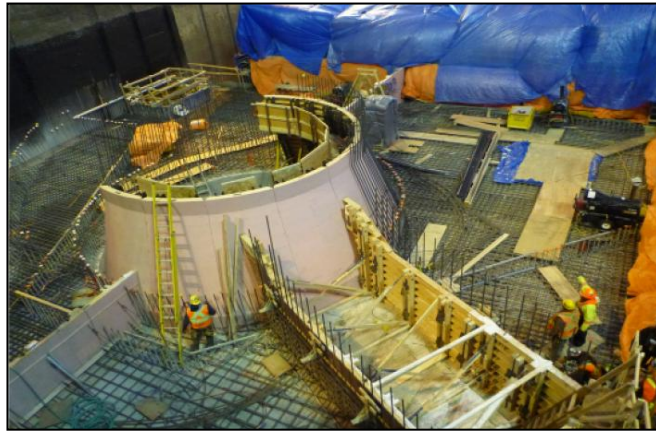


Figure 3: Little Long – Formwork and Preparation for pour

#### Harmon

- Concrete work has started at Harmon, with 355 m3 poured in November, mostly in the intake (Figure 4).
- Rock support work in the G4 bullnose and walls was completed as part of the field instructions provided by the RSW geologist.
- Winter shelter footings have been poured in preparation for the winter shelter erection.
- Electrical power cables were terminated into a panel on the existing east powerhouse wall as part of the electrical set-up for the winter shelter.



Figure 4: Harmon – Site Overview



Figure 5: Kipling – Cofferdam Cell #2 Installation

#### Kipling

- Cofferdam Cell #3 was completed.
- The template was assembled to allow for the installation of Cell #2 (Figure 5).
- The G3 intake gate is being prepared for removal.

**Monthly Summary – November 2011**

SPILLS			
No. of Spills:		11; Spill Reports 169-179 (see Figure 6 for LMRP spills breakdown).	
Classification of Spills:		<u>Project Classification</u> Minor – 9    Moderate – 2    Major – 0    To Water - 0  <u>MOE Classification</u> Non-reportable - 10 Reportable to MOE <ul style="list-style-type: none"><li>- Class C – 1</li><li>- Class B – 0</li><li>- Class A – 0</li></ul>	
<u>Reportable Spills</u>			
No.	Quantity /Product Spilled	Spill Site	Reason for being Reportable
1	Between 10 L and 100 L (exact amount unknown)/ Rubber Blast Mats)	Smoky Falls – Permanent Switchyard	Moderate Spill - Reportable On Land (release of toxic fumes).
Project Classification (KAP) Minor: ≤ 10L Moderate: Between 10L and 100L Major: ≥100L To Water: Any amount is reportable to the MOE (See Figure 7: KAP Spills Response Flowchart)			MOE Classification Non-reportable: < 100L Reportable to MOE <ul style="list-style-type: none"><li>• Class C - Less Serious</li><li>• Class B – Serious</li></ul> Class A – Very Serious

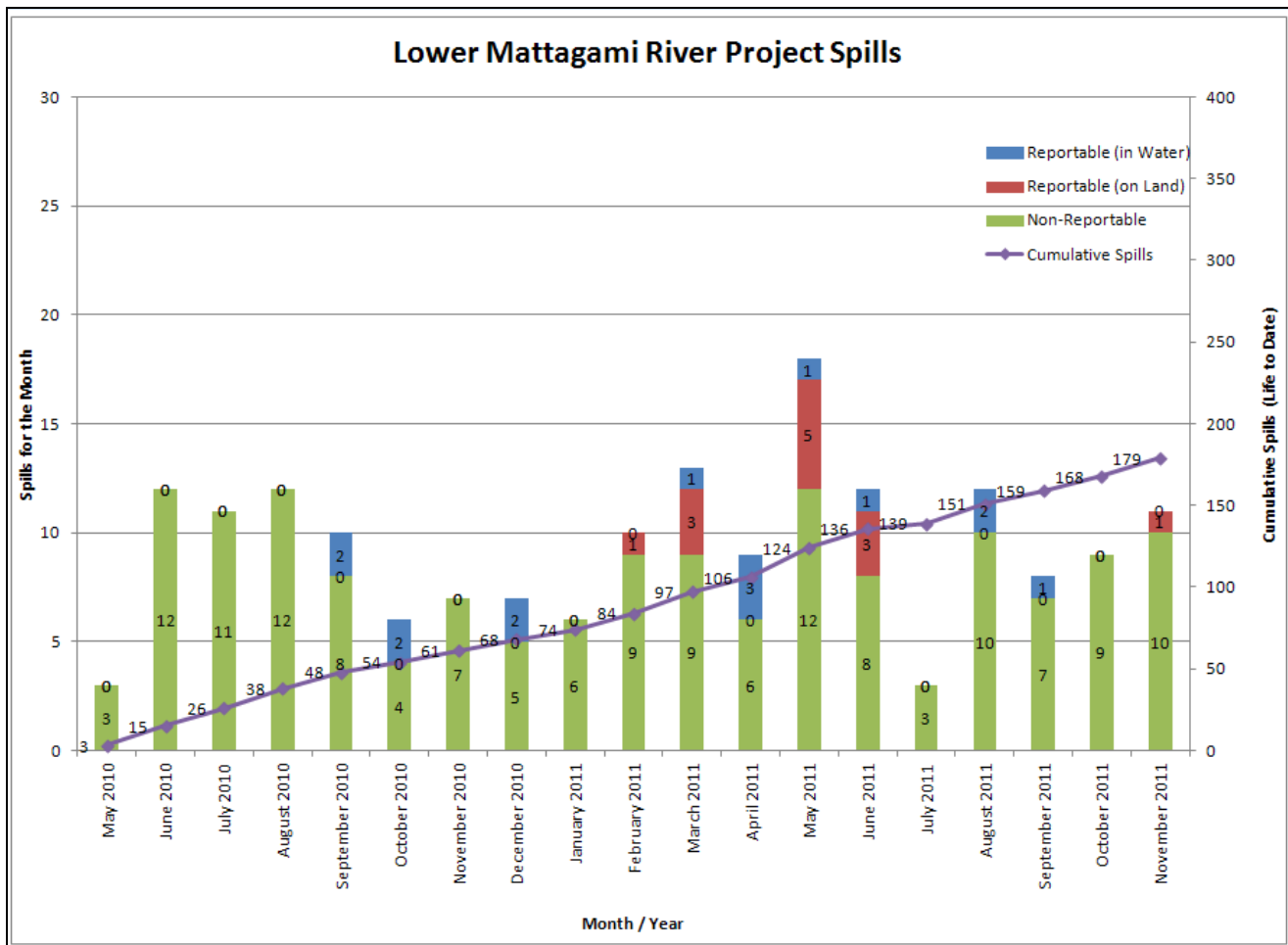


Figure 6: Lower Mattagami River Project spills

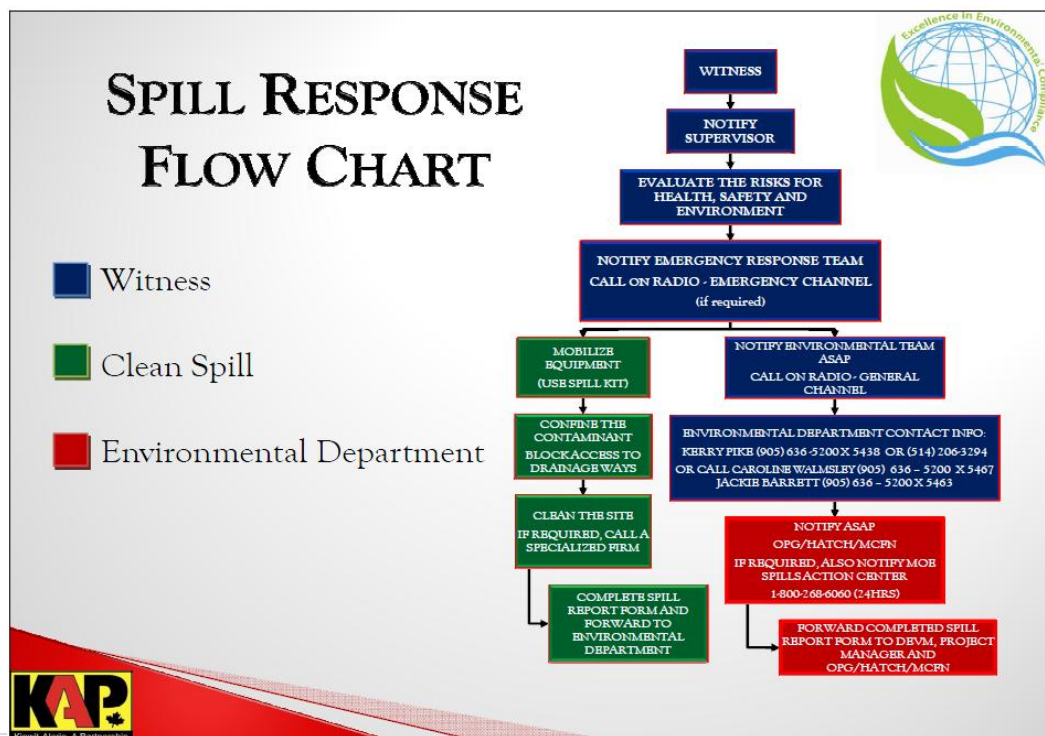
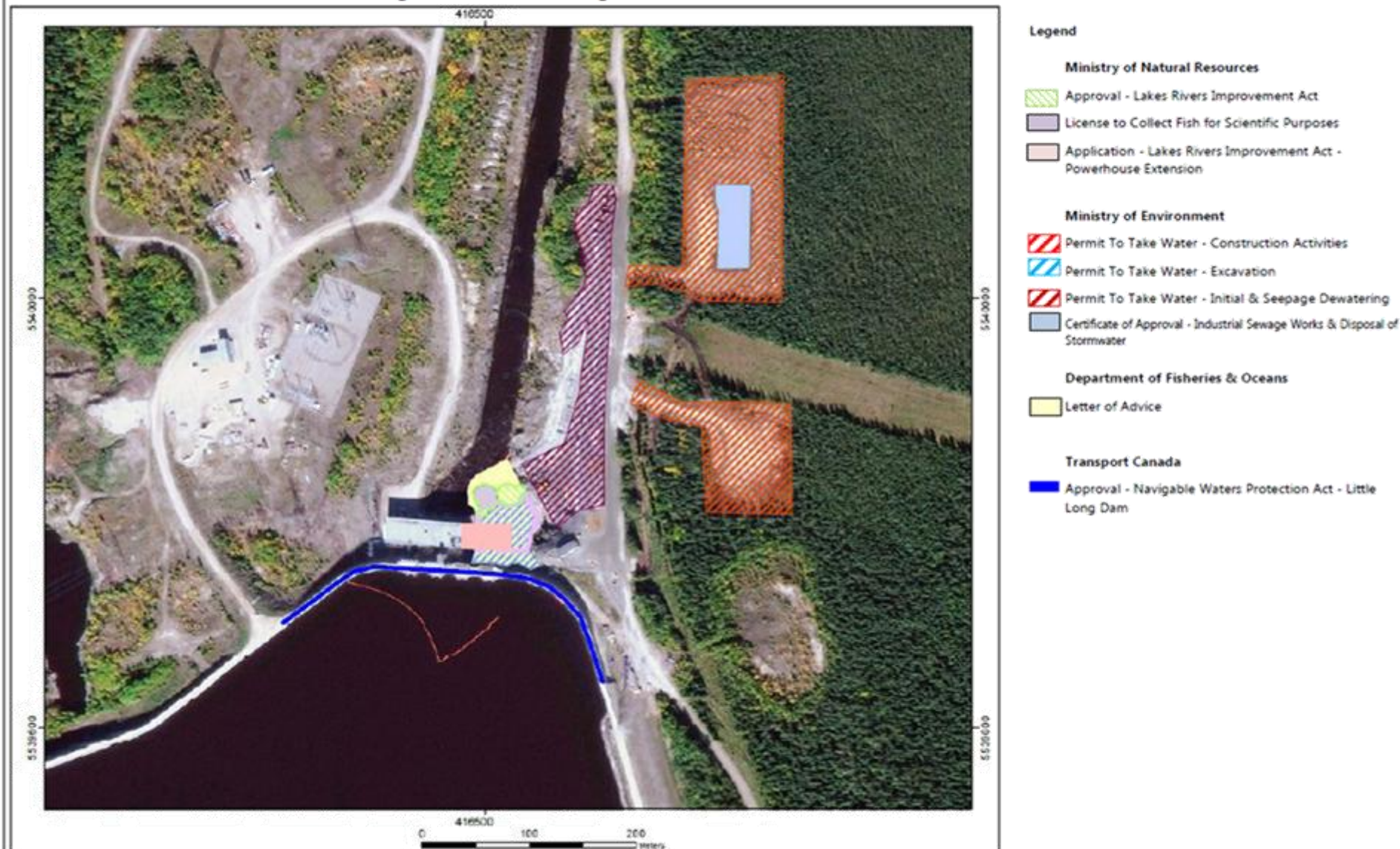


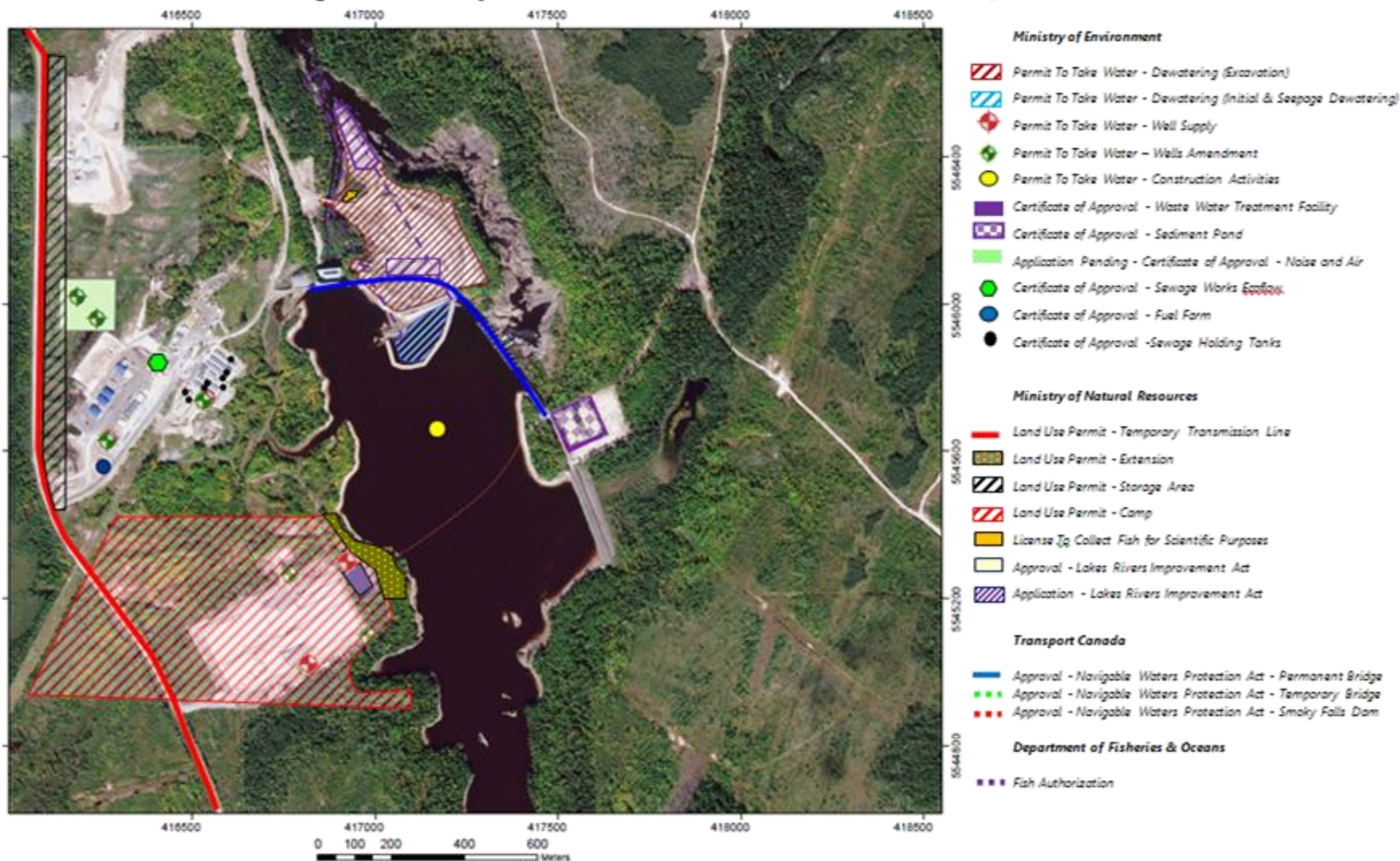
Figure 7: KAP Spills Response Flowchart



<b>PERMIT AND APPROVAL REVIEW</b>			
No. Reviewed:	0	List:	n/a
No. Sent to KAP:	0	List:	n/a
<b>Reports Review</b>			
No. Reviewed for KAP	0	List	n/a
No. Sent to KAP	0	List	n/a
No. Reviewed for MECC	4	List	On-going: <ul style="list-style-type: none"> <li>• Cost Benefit Analysis of Mitigating and Reducing Spill in Adam Creek.</li> <li>• Operation Overview Report.</li> <li>• Baseline Methyl Mercury Reports and Mercury in Fish Flesh Summary Report.</li> </ul>
No. Review Completed	0		n/a
<b>REQUESTS FOR INFORMATION (RFIs)</b>			
No. Reviewed:	0	List:	n/a
No. Sent to KAP:	0	List:	n/a
See figures 8 to 11 below for site location of the permits that have been or are pending approval.			

**Figure 8: Little Long GS - Permits**



**Figure 9: Smokey Falls GS - Permits**



**Figure 10: Harmon GS - Permits**

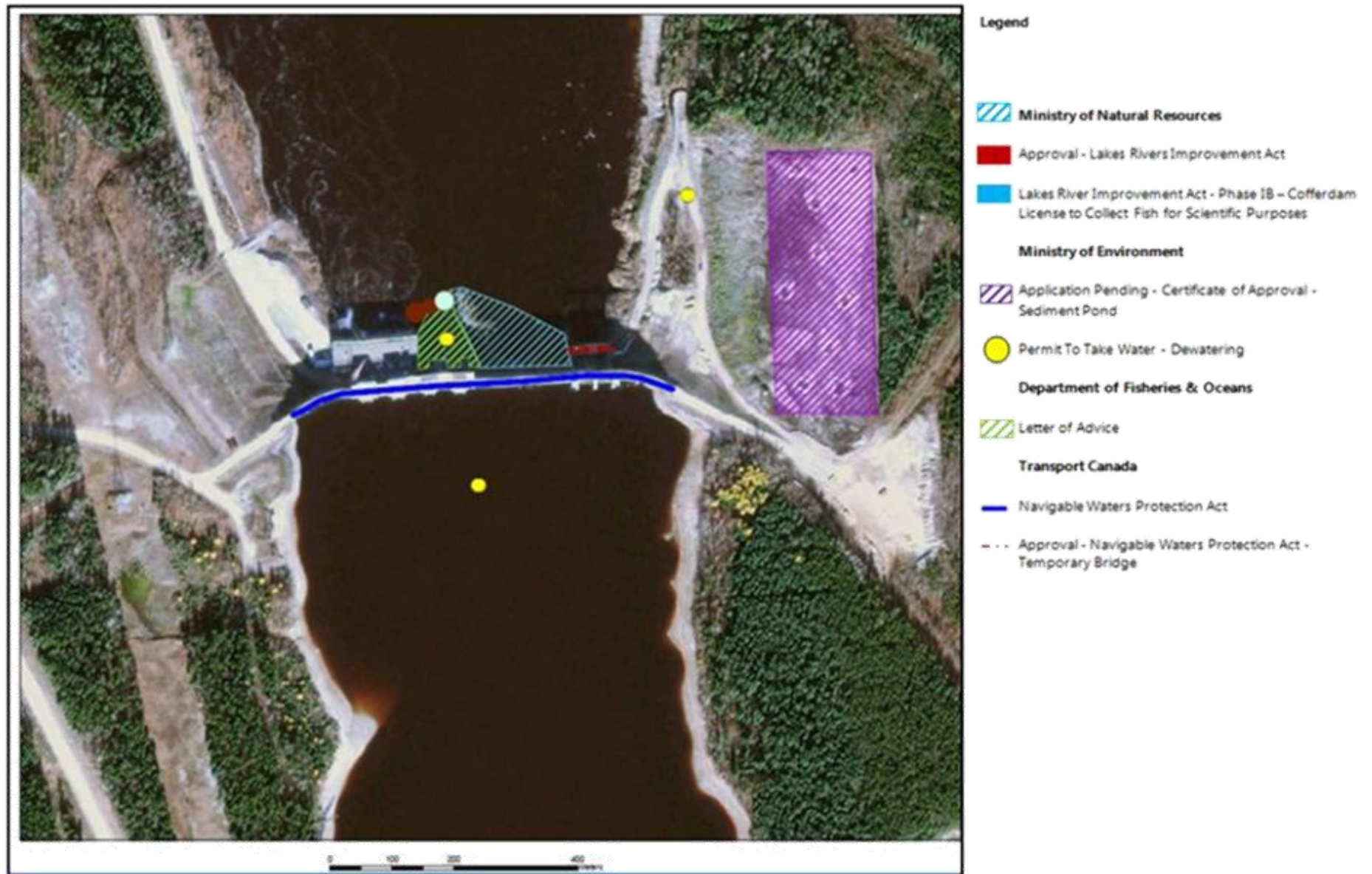
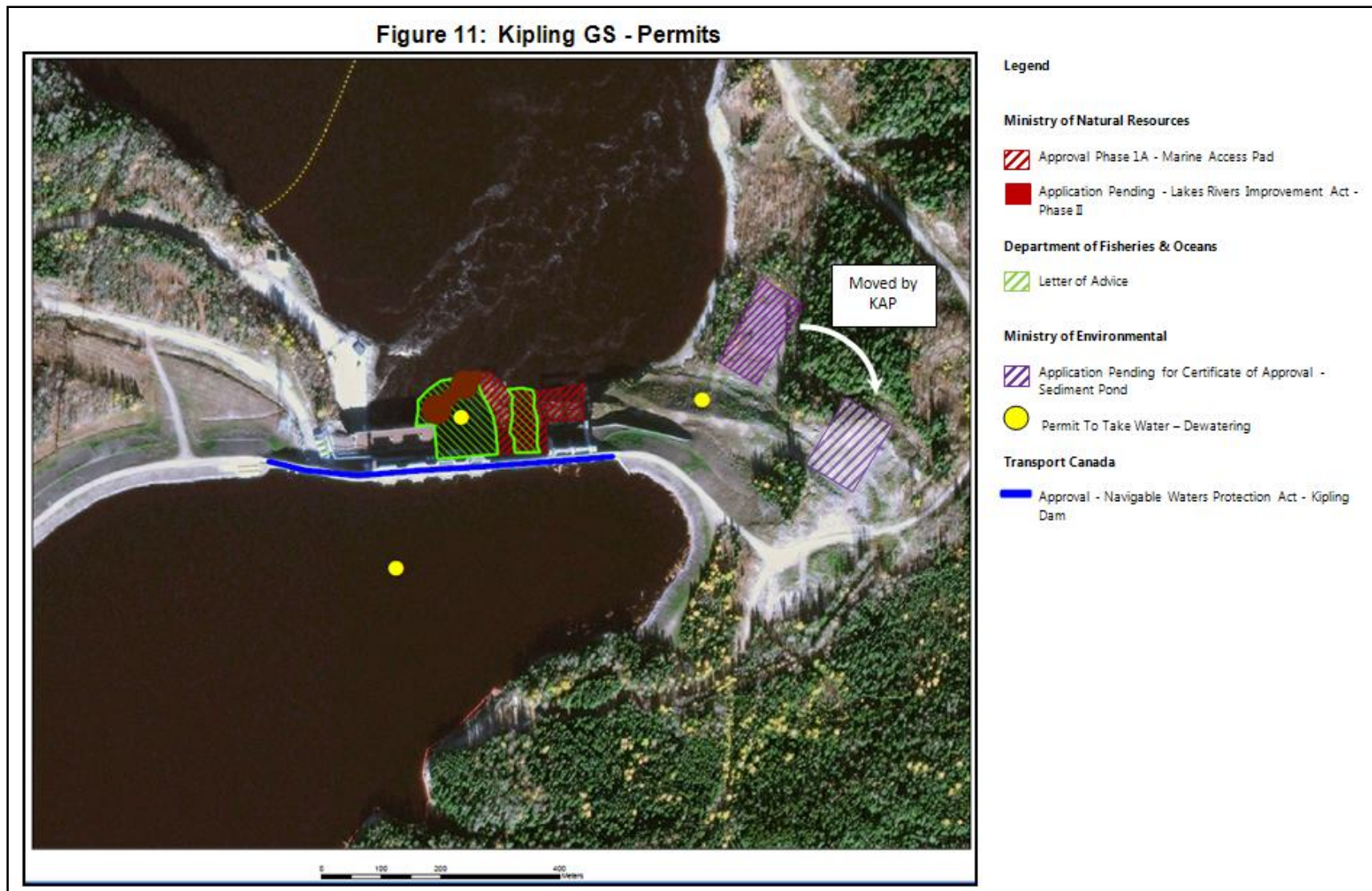


Figure 11: Kipling GS - Permits



### Issues and Concerns

- EWG members having issues with the language around the portrayal of Adam Creek in the *Cost Benefit Analysis of Mitigating and Reducing Spill in Adam Creek* report.

Action Required: The EWG will review the report together and consider language in the report that will satisfy all EWG members.