

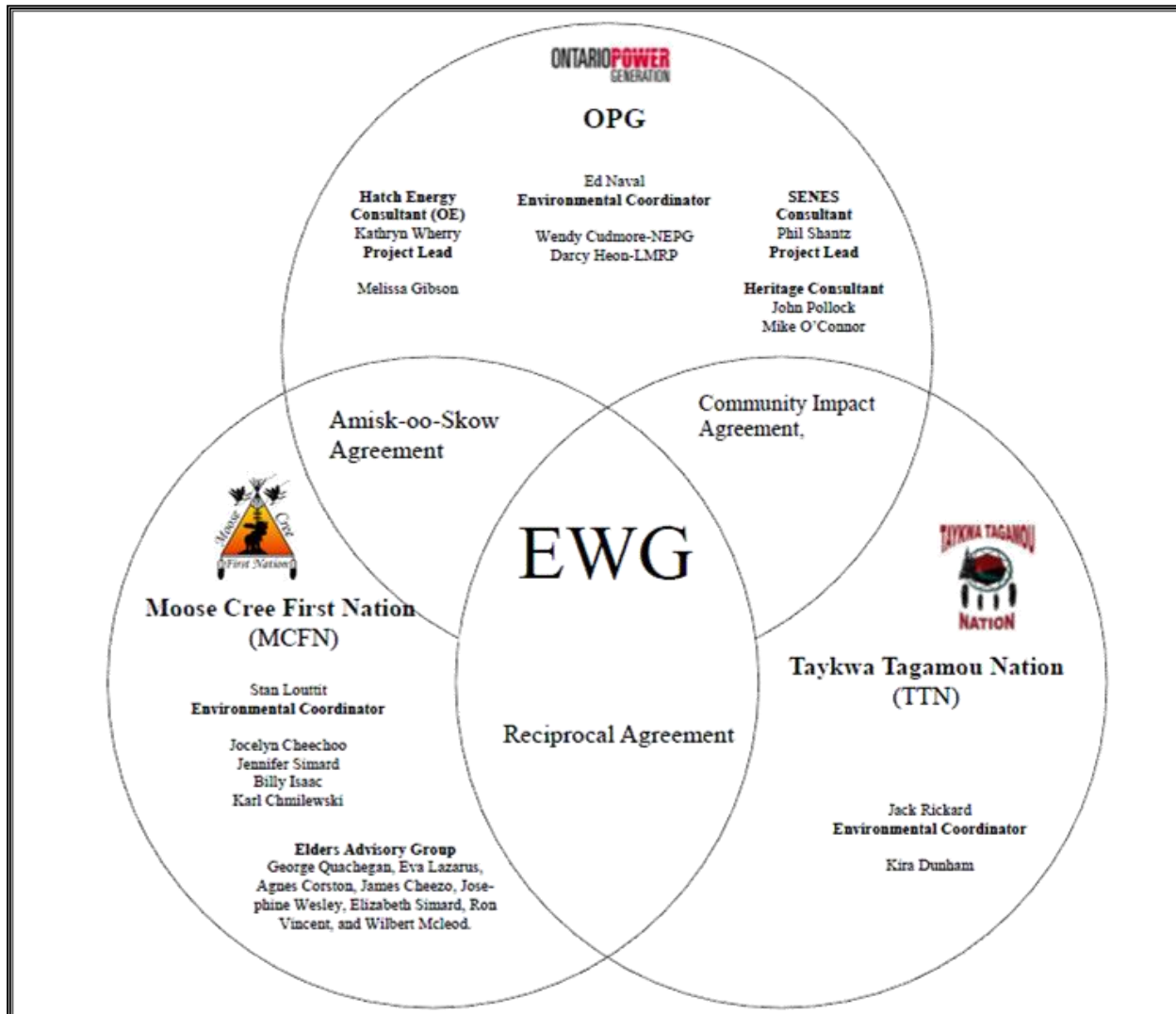
Environmental Working Group

Monthly Report

May 2012

ENVIRONMENTAL WORKING GROUP

Relationship Organizational Chart



- Weekly Environmental Working Group (EWG) and EWG/Kiewit – Alarie, a Partnership (KAP) meetings.
 - The EWG review its Action Items that include priority permit reviews, and deliverables to the Mattagami Extensions Coordinating Committee (MECC).
 - KAP gives EWG a construction up date every week and discusses any upcoming issues and/or urgent permit reviews.
 - Specific items that were discussed are below.
- Inclusion of a First Nation perspective on the Cost Benefit Analysis of Mitigating and Reducing Spill in Adam Creek. MCFN and TTN are currently conducting community interviews. MCFN is also beginning to transcribe the interviews that have been completed.
- Review and compilation of comments on Environmental Effects Monitoring Workshop Report.
- Review of the Fish Habitat Assessment Report and Mercury in Fish Flesh Summary Report intended to fulfill EA Term and Condition 4b.
- The EWG presented the results of its review of KAPs Noise Control Plan and Waste Management Plan intended to fulfill EA Term and Condition 18 and 19 respectively, to the MECC. The MECC's subsequent decision was that Condition 18 and 19 had been met.
- MCFN and TTN members of the EWG held the first workshop for the historical text and map required for condition 2c on May 23 and 24. The workshop included Elders from both communities who shared their stories and experiences of living within the Moose River Basin. The Historical text now has a working title, "Peoples of the Moose River Basin." A follow up workshop is being planned for Sept 2012 as well as a MCFN-TTN youth workshop in July/August 2012.
- Obtaining proposals from potential candidates to facilitate the EWGs Team Building exercise.

ACTIONS TO BE COMPLETED in 2012

	Jan	Feb	Mar	Apr	May	June	July	Aug	Sept	Oct	Nov	Dec
EA Terms and Conditions Environmental Compliance Plan – EWG Review and Submission to MECC.												
EWG Environmental Due Diligence Audit #2												
EWG present to the MECC the result of its review of the LMRP "Operations Report" (Condition 4(a) of EA T&Cs).												
EWG present to the MECC the result of its review of the "Fish Habitat Assessment Report", and "Baseline Fish Methyl Mercury Report" (Condition 4b. of EA T&Cs) by Hatch.	Date to be determined											
EWG present to the MECC the result of its review of the draft "Cost Benefit Analysis of Mitigating and Reducing Adam Creek Spill" (Condition 4(c) and (e) of EA T&Cs) by Hatch.												
EWG present to the MECC the "Waste Management Plan" (EA T&C 19).												
EWG present to the MECC "The Noise Protocol Plan" (Condition 18 of EA T&Cs).												
EWG present to the MECC "Environmental Monitoring Plan, Lower Mattagami												

	Jan	Feb	Mar	Apr	May	June	July	Aug	Sept	Oct	Nov	Dec
Development" (EA T&C 14).												
EWG present to the MECC the "Erosion Monitoring Plan" (EA T&C 6).												
EWG present to the MECC the "Evaluation of the Need to Conduct Terrestrial Habitat Restoration Downstream of Kipling" (EA T&C 5).												
Draft of Traditional Ecological Knowledge in relation to the Lower Mattagami River Project.												
EWG present to the MECC the results and recommendations of periodic re-evaluations (Condition 10 of EA T&Cs).												

Construction

Little Long

- Concrete work is progressing well, with 1,135 m³ of concrete poured in the powerhouse and intake areas this month, bringing the total poured to date to 9,908 m³.
- Rebar and form work continues to progress at a good pace.
- One of the subcontractors (AFI Hydro) has been setting and aligning the draft tube stop log sill beams, side guides, and lintels.
- Work to begin repairs of the intake gate guides has started with scaffold erection completed in the intake gate well.
- Scroll case soffit shoring tower erection is advancing well (Figure 1).



Figure 1: Little Long Pit liner, scroll case shoring and stay ring

Harmon

- 1,313 m³ of concrete was poured in the powerhouse and intake areas this month, bringing the total poured to date to 4,811 m³ (Figure 2).
- Rebar and form work for the next intake and powerhouse pours are advancing.



Figure 2: Harmon Site Overview from the Cofferdam

Kipling

- Drill and grout work on Cell #2 and the shore tie-in is nearing completion.
- Drill and grout work on the Arc Cells is nearing completion.
- Post-tension anchors were installed on Cell #2.
- The dewatering system has been successfully set up and tested.
- Drill and blast of the Kipling Unit 3 pier was completed.
- The Unit 3 intake block wall removal is nearing completion (Figure 3).

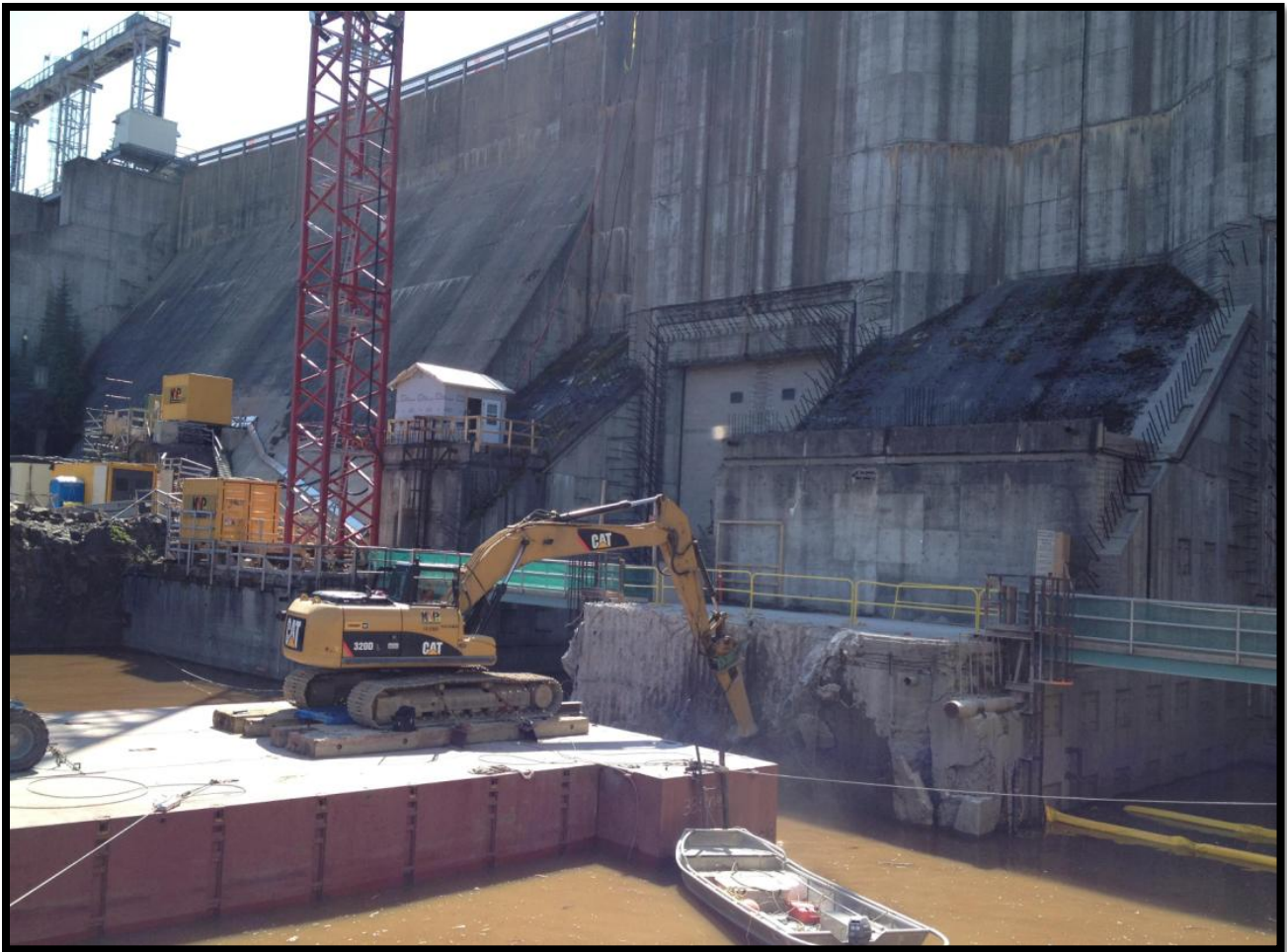


Figure 3: Work on Unit 3 pier at Kipling

Smoky Falls

- 6,091 m³ of concrete was poured this month in the service bay, powerhouse, and intake areas, bringing the total poured to date to 30,842 m³ compared with a total volume planned of 135,905 m³.
- Eighteen other concrete pours are in various stages of work (form work started and/or rebar being installed) and progressing.
- The reconstruction of the Smoky Falls Unit 2 / Unit 3 bullnose was completed, and all six extensometers required for the rebuild were installed and grouted.
- The winter shelter removal was completed on May 9th.

- Wet tailrace drilling has been completed. Blasting will resume at the end of the fish window, on July 15th.
- The mud slabs for the permanent bridge abutments were successfully poured.
- A mud slab was poured for the East Gravity Dam, and grout curtain hole drilling for the East Gravity Dam is in progress.
- Work in the switchyard (concrete form work, rebar, pours, and backfilling) is progressing.



Figure 4: Smoky Falls Site Overview

Monthly Summary – May 2012

SPILLS			
No. of Spills:		15; Spill Reports 226-240 (see Figure 6 for LMRP spills breakdown).	
Classification of Spills:		<u>Project Classification</u> Minor – 15 Moderate – 0 Major –0 To Water - 0 <u>MOE Classification</u> Non-reportable - 15 Reportable to MOE <ul style="list-style-type: none">- Class C – 0- Class B – 0- Class A – 0	
<u>Reportable Spills</u>			
No.	Quantity /Product Spilled	Spill Site	Reason for being Reportable
n/a	n/a	n/a	n/a
Project Classification (KAP) Minor: ≤ 10L Moderate: Between 10L and 100L Major: ≥100L To Water: Any amount is reportable to the MOE (See Figure 7: KAP Spills Response Flowchart)			MOE Classification Non-reportable: < 100L Reportable to MOE <ul style="list-style-type: none">• Class C - Less Serious• Class B – Serious• Class A – Very Serious
Sediment Pond Exceedance of Effluent Objective			
No. of Exceedance days recorded	Location	Mitigation Measures used	
5 (May 4, 8-11)	Smoky Falls	The increase in the NTU levels is due to heavy rain that occurred the previous night. KAP added Alum to the pond as a corrective measure. The baffle curtains were installed on May 15th and are working well. KAP received a thunder shower and large amount of rain on the 15th and discharge turbidity levels did not increase.	
1 (May 21)	Little Long	The increase in the turbidly was a result heavy rain and thunderstorms that occurred on the night of May 20 which stirred the creek up, increasing the turbidity. As the increase in turbidity was due to the weather conditions and not from construction activities, no corrective measures were implemented.	

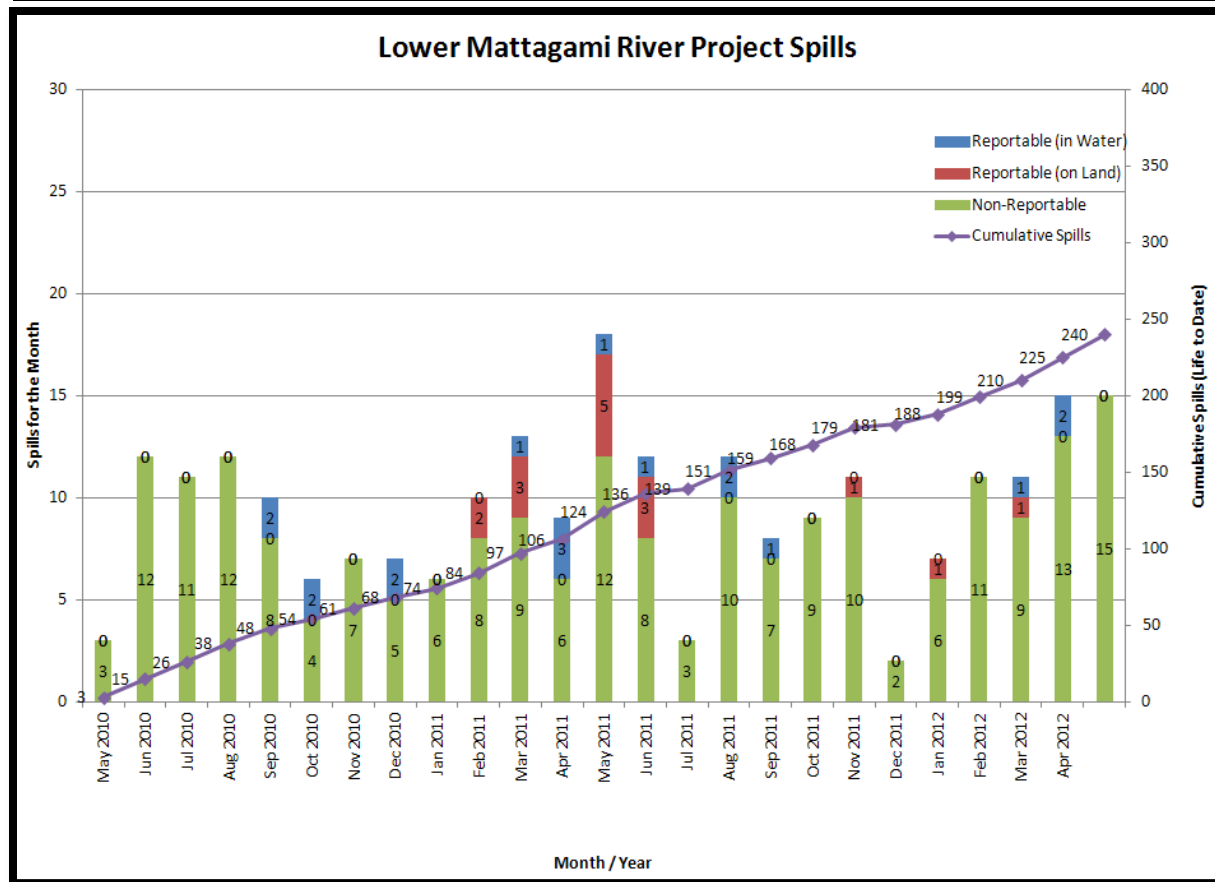


Figure 6: Lower Mattagami River Project spills

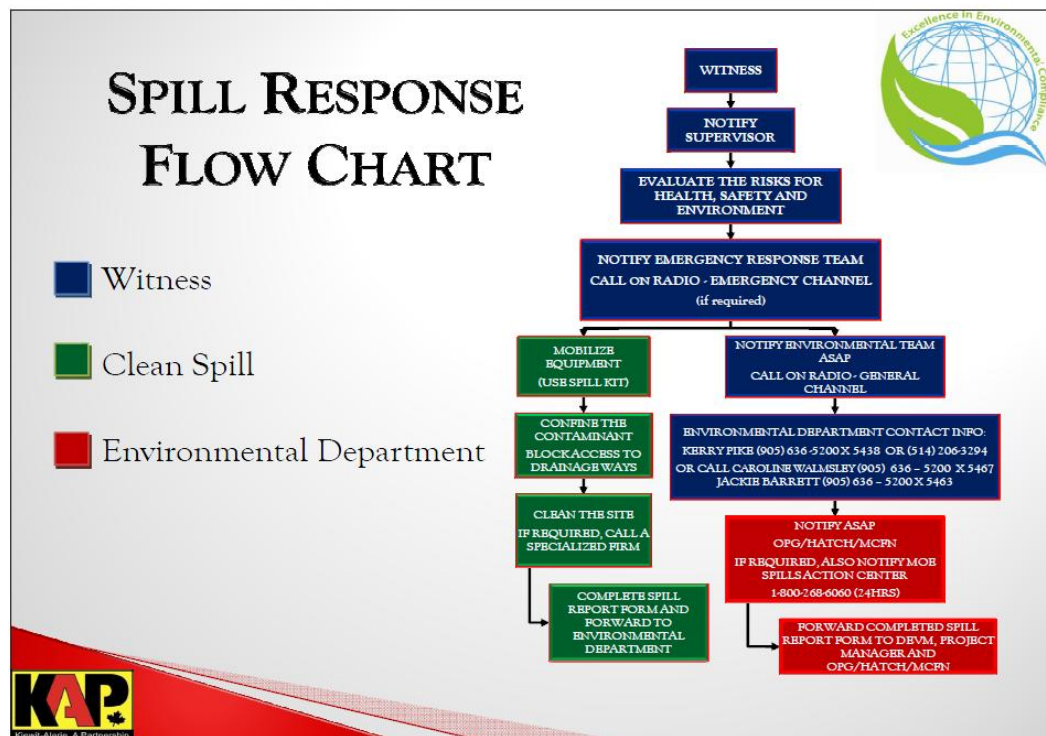


Figure 7: KAP Spills Response Flowchart

PERMIT AND APPROVAL REVIEW			
No. Reviewed:	0	List:	
No. Sent to KAP:	0	List:	
Reports Review			
No. Reviewed for KAP	0	List:	
No. Sent to KAP	0	List:	
No. Reviewed for MECC	5	List:	On-going: <ul style="list-style-type: none"> • Cost Benefit Analysis of Mitigating and Reducing Spill in Adam Creek. • Mercury in Fish Flesh Summary Report. • Fish Habitat Assessment Report
No. Review Completed	1	List:	<ul style="list-style-type: none"> • Operation Overview Report. • Waste Management Plan • Noise Control Plan
REQUESTS FOR INFORMATION (RFIs)			
No. Reviewed:	0	List:	n/a
No. Sent to KAP:	0	List:	n/a
See figures 8 to 13 below for site location of the permits that have been or are pending approval.			



Figure 9:
Lower Mattagami River Project
Harmon GS - Permits

Legend

Department of Fisheries & Oceans


 Letter of Advice

Transport Canada

 Navigable Waters Protection Act - Temporary Bridge


 Navigable Waters Protection Act - Harmon Dam


Ministry of Environment


 Amended - Certificate of Approval - Sediment Pond

 Permit To Take Water - Dewatering

Ministry of Natural Resources

 Lakes Rivers Improvement Act - Phase 1A Marine Access Pad

 Lakes River Improvement Act - Phase 1B - Temporary Cofferdam

 Lakes River Improvement Act - Phase 2 Powerhouse Upgrades

 License To Collect Fish for Scientific Purposes



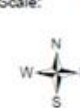
Kiewit - Alarie, A Partnership

Created By: Caroline Walmsley

Datum: Zone 17U

Date: January 19, 2012

Scale: 1: 5,500



ONTARIO POWER
GENERATION

0 100 200 400
Meters

LMRP-FJ28-ENV-DWG-0001-2012-01-19-R04



Figure 10:
Lower Mattagami River Project
Kipling GS - Permits

Legend

Department of Fisheries & Oceans

Letter of Advice

Transport Canada

Approval - Navigable Waters Protection Act - Kipling Dam

Ministry of Environmental

Amended Certificate of Approval - Sediment Pond

Permit To Take Water - Dewatering

Ministry of Natural Resources

Lakes River Improvement Act - Phase 1A - Marine Access Pad

Lakes Rivers Improvement Act - Phase 1A-1 Deflector Wall

Lakes Rivers Improvement Act - Phase 1A-2 Spillway Location Revised

Lakes Rivers Improvement Act - Phase 1B Temporary Cofferdam

Lakes Rivers Improvement Act - Phase 2 Powerhouse Upgrades

Licence to Collect Fish for Scientific Purposes



Kiewit - Alarie, A Partnership

Created By: Caroline Walmsley

Datum: Zone 17U

Date: January 19, 2012

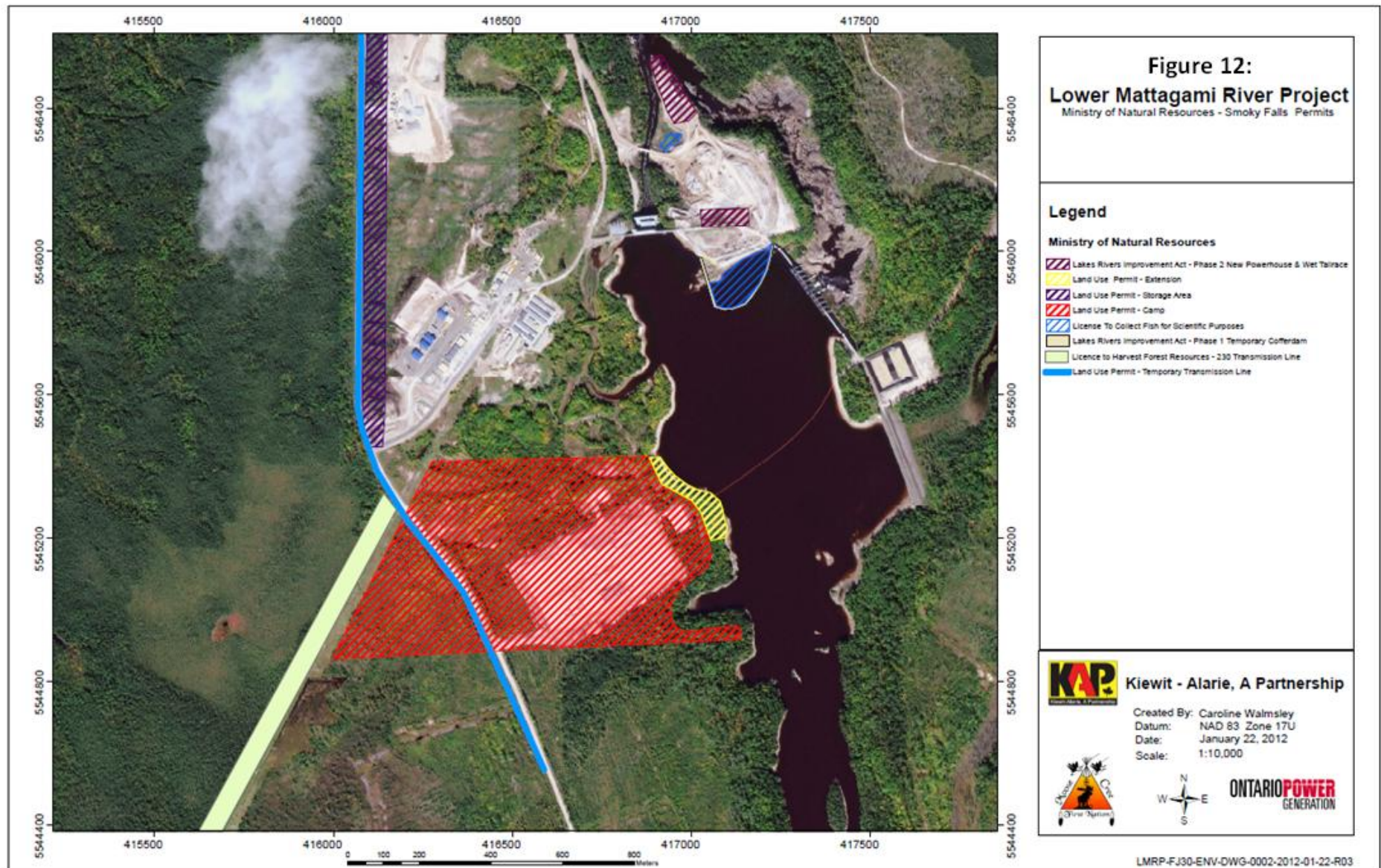
Scale: 1: 5,500

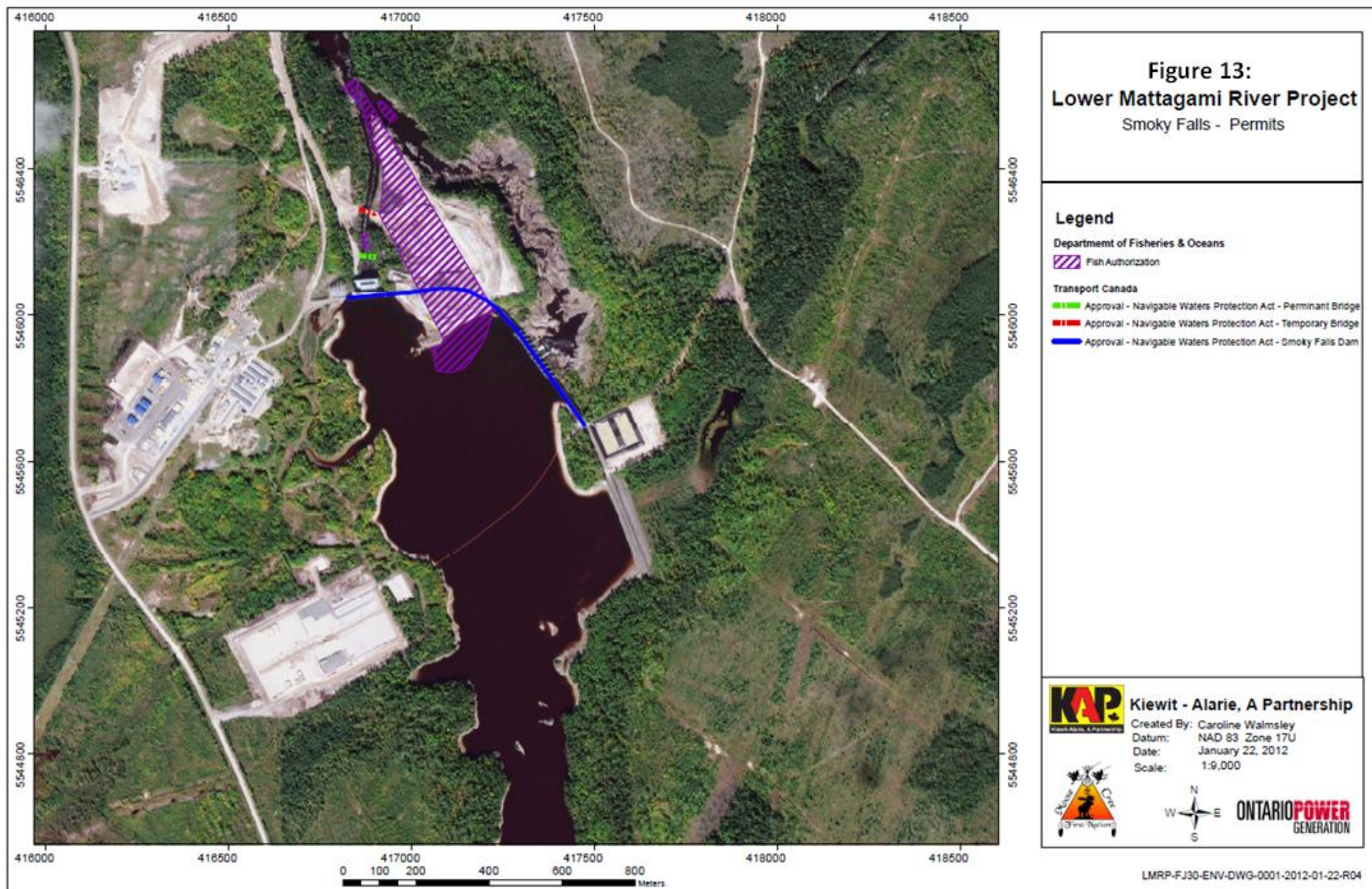


ONTARIO POWER
GENERATION

LMRP-FJ27-ENV-DWG-0001-22012-01-19-R04







Issues and Concerns

- The EWG expressed concerns with the recommendations regarding the fish salvage operations were not being properly communicated to KAP.

Action Required: EWG to develop an EWG recommendation memo that will accurately document any recommendations discussed during EWG/KAP meetings.