



---

## **Environmental Working Group**

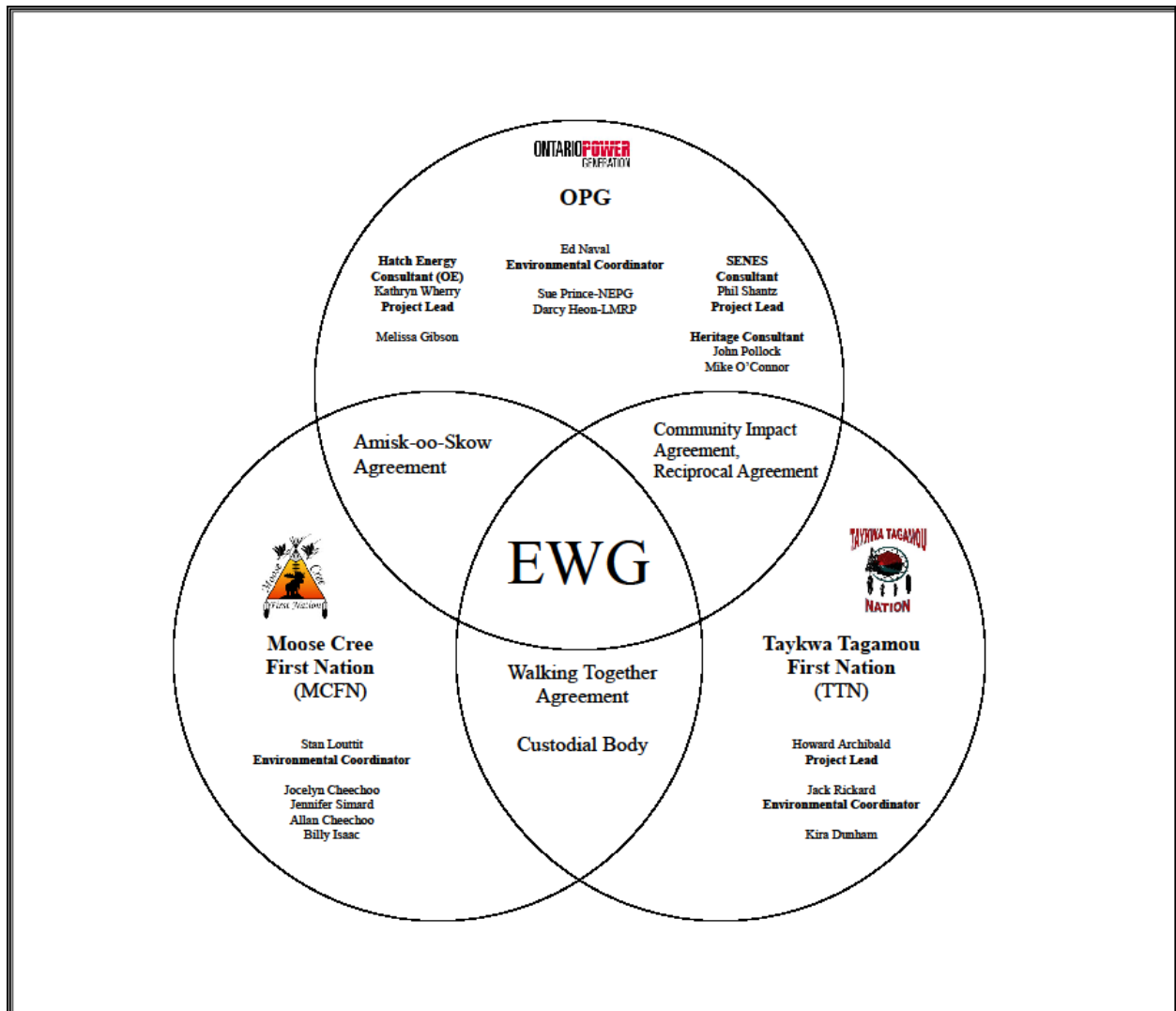
### **Monthly Report**

---

**March 2011**

## ENVIRONMENTAL WORKING GROUP

### Relationship Organizational Chart



**ACTIONS COMPLETED**

- Weekly Environmental Working Group (EWG) and EWG/Kiewit – Alarie, a Partnership (KAP) meetings.
  - The EWG review its Action Items that include priority permit reviews, and deliverables to the Mattagami Extensions Coordinating Committee (MECC).
  - KAP gives EWG a construction up date every week and discusses any upcoming issues and/or urgent permit reviews.
- Members of the EWG conducted an Environmental Due Diligence Audit on the Lower Mattagami Project Site on March 29 and 30. Ongoing work to complete the Environmental Audit continues, including analysis and development of the Audit report.
- The EWG Face to Face meeting was held on March 31, 2011, to discuss the preliminary results of the Audit and the upcoming Environmental Effects Monitoring Workshop on April 27 to 28.
- Preliminary Environmental Effects Monitoring Workshop – Continuing coordination of logistics for workshop and confirmation of presenters/EWG attendee list.
- Preliminary Environmental Monitoring Plan and Workshop Framework - revision of the EEM Workshop Framework and Plan to update and reflect EWG comments and most recent information.
- Smoky Falls Fish Habitat Compensation Plan Revision – Involved in discussions with KAP regarding KAP's proposed changes to the current fish habitat compensation plan
- LEED green housekeeping – ongoing discussions regarding potential options for green housing keeping products.
- Ongoing review and compilation of Traditional Ecological Knowledge (TEK) for the Lower Mattagami River Project.
- Determination of Project Environmental Reporting review schedule for EWG and presentation of the Reports to the MECC.

**ACTIONS TO BE COMPLETED FOR 2011**

	Jan	Feb	Mar	Apr	May	June	July	Aug	Sept	Oct	Nov	Dec
Draft of Traditional Ecological Knowledge in relation to the Lower Mattagami River Project.												
Environmental Effects Monitoring Workshop												
Environmental Assessment (EA) Variances – EWG Review and Submission to MECC												
EA Terms and Conditions Environmental Compliance Plan – EWG Review and Submission to MECC.												
EWG Terms of Reference (ToR) – Submission to MECC												
EWG Work Plan – Submission to MECC												
EWG Environmental Due Diligence Audit #1												

	Jan	Feb	Mar	Apr	May	June	July	Aug	Sept	Oct	Nov	Dec
Environmental Audit – Accreditation Training												
EWG presentation to the MECC the LMRP "Operations Report" (fulfills Condition 4(a) of EA T&Cs).												
EWG present to the MECC "Fish Habitat Assessment Report", and "Baseline Fish Methyl Mercury Report" (fulfills Condition 4b. of EA T&Cs).												
EWG present to the MECC "Cost Benefit Analysis of Mitigating and Reducing Adam Creek Spill" (fulfills Condition 4(c) and (e) of EA T&Cs).												
EWG present to the MECC the methods and means of ensuring that restrictions on hunting and fishing (fulfills Condition 5(a) and (c) of EA T&Cs).												
EWG present to the MECC "Terrestrial Habitat Restoration Downstream of Kipling GS" (fulfills Condition 4b. of EA T&Cs).												
EWG present to the MECC a Public Information Program to communicate the results of fish methyl mercury baseline reports (fulfills Condition 7(a) and (b) of EA T&Cs).												
EWG present to the MECC the cumulative effects data developed during the Federal EA process (fulfills Condition 8(a) and (b) of EA T&Cs).												
EWG present to the MECC the results and recommendations of periodic re-evaluations (fulfills Condition 10 of EA T&Cs).												
EWG present to the MECC "Hydroelectric Generating Facilities Decommissioning Plan" (fulfills Condition 11(a) of EA T&Cs).												
EWG present to the MECC "The Noise Protocol Plan" (fulfills Condition 18 of EA T&Cs).												

## Construction Update

### Construction

#### General

- Permanent Camp Phase 1 – By the end of March most of Phase 1 was assembled and occupied and only a small number of staff were commuting from Kapuskasing. The kitchen was declared in-service as planned on April 1<sup>st</sup>.
- A Project-wide safety stand-down was held on March 2nd to review recent safety incidents.
- Batch Plant commissioning has been on-going throughout March.
- A Memorandum of Understanding (MOU) to settle issues around the permanent camp is close to completion and sign-off.
- The Permanent Camp Kitchen progressed well and successfully opened as planned on April 1<sup>st</sup>.

#### Smoky Falls

- Smoky Falls cofferdam dewatering was completed on March 10th. Pumping is removing minor seepage from the cofferdam area. Excavation of the intake area has begun with significant volumes being removed now that the cofferdam is successfully dewatered.
- Smoky Falls Island excavation continues of various elevations within the powerhouse, tailrace, and intake footprint. Overburden removal continues in concentrated area to the right side of the powerhouse footprint where rock was originally anticipated (Figure 1).



Figure 1: Smoky Falls Construction Site

#### Little Long

- The Little Long Communication tower was removed on March 1<sup>st</sup>.
- Cellular cofferdam – grouting operations on the cofferdam continue to progress

well, and work is progressing on the pier and shore tie-in sections (Figure 2).

- The tower crane was erected, and by the end of March, performance testing and structural inspections were completed.



Figure 2: Shore tie-in at Little Long

#### **Harmon**

- The Manitowoc 2250 crawler crane (for cofferdam construction) underwent performance testing and received final approval for use.
- The cofferdam template was relocated from Little Long and modified for the Harmon cofferdam design.
- Tower crane pad work progressed during the month of March (Figure 3).
- On-going work to remove ice from the sluiceway was ongoing through March.



Figure 3: Overview of the Harmon Site

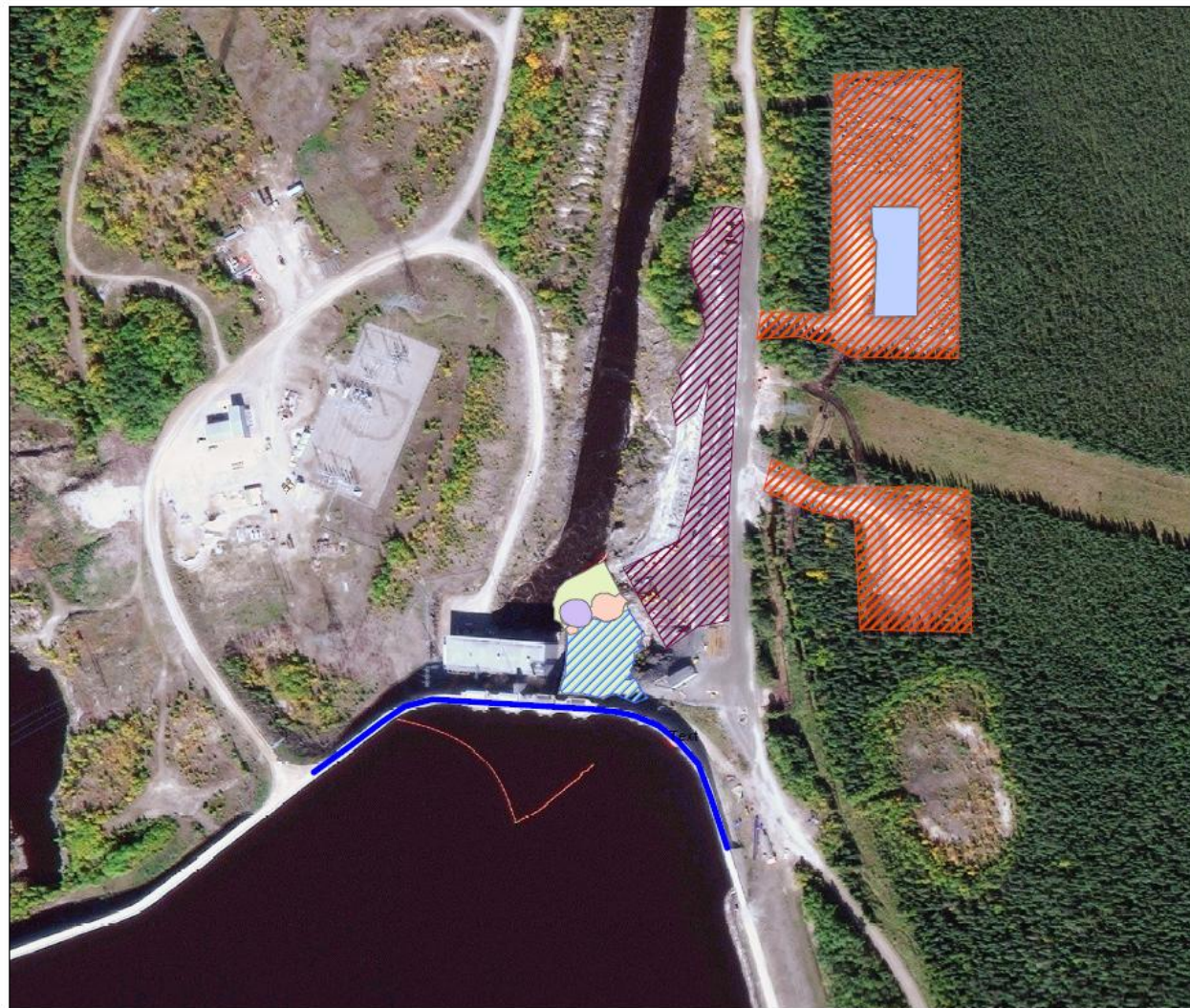
#### **Kipling**



- Preparations for the installation of the deflector wall for the spillway began late in March.

**Monthly Summary – March 2011**





SPILLS			
No. of Spills:		13; Spill Reports 85-97	
Classification of Spills:		<u>Project Classification</u> Minor – 9    Moderate – 3    Major – 0    To Water - 1  <u>Ministry of the Environment (MOE) Classification</u> Non-reportable - 9 Reportable to MOE <ul style="list-style-type: none"><li>- Class C – 4</li><li>- Class B – 0</li><li>- Class A – 0</li></ul>	
Project Classification (KAP) Minor: ≤ 10L Moderate: Between 10L and 100L Major: ≥100L To Water: Any amount is reportable to the MOE		MOE Classification Non-reportable: < 100L Reportable to MOE <ul style="list-style-type: none"><li>• Class C - Less Serious</li><li>• Class B – Serious</li><li>• Class A – Very Serious</li></ul>	
REQUESTS FOR INFORMATION (RFIs)			
No. Reviewed:	0	List:	
No. Sent to KAP:	1	List:	n/a
PERMIT AND APPROVAL REVIEW			
No. Reviewed:	6	List:	<ul style="list-style-type: none"><li>• Smokey Falls (SF) Ministry of the Environment (MOE), Permit to Take Water (PTTW) Wells Amendment</li><li>• SF MOE Certificate of Approval (CofA) Wastewater Treatment Plant (WWTP) Amendment</li><li>• Little Long Extension - Application for Plans and Specifications Approval</li><li>• Kipling - MOE - C of A - Sediment Pond</li></ul>
No. Sent to KAP:	4	List:	<ul style="list-style-type: none"><li>• SF MOE PTTW Wells Amendment</li><li>• SF MOE CofA WWTP Amendment</li><li>• Little Long Extension - Application for Plans and Specifications Approval</li><li>• Kipling - MOE - C of A - Sediment Pond</li></ul>
See figures 1 to 4 below for site location of the permits that have been or are pending approval.			



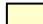
**Figure 1: Little Long GS - Permits****Legend****Ministry of Natural Resources**

-  Approval - Lakes Rivers Improvement Act
-  License to Collect Fish for Scientific Purposes


**Ministry of Environment**

-  Permit To Take Water - Construction Activities
-  Permit To Take Water - Excavation
-  Permit To Take Water - Initial & Seepage Dewatering
-  Certificate of Approval - Industrial Sewage Works & Disposal of Stormwater

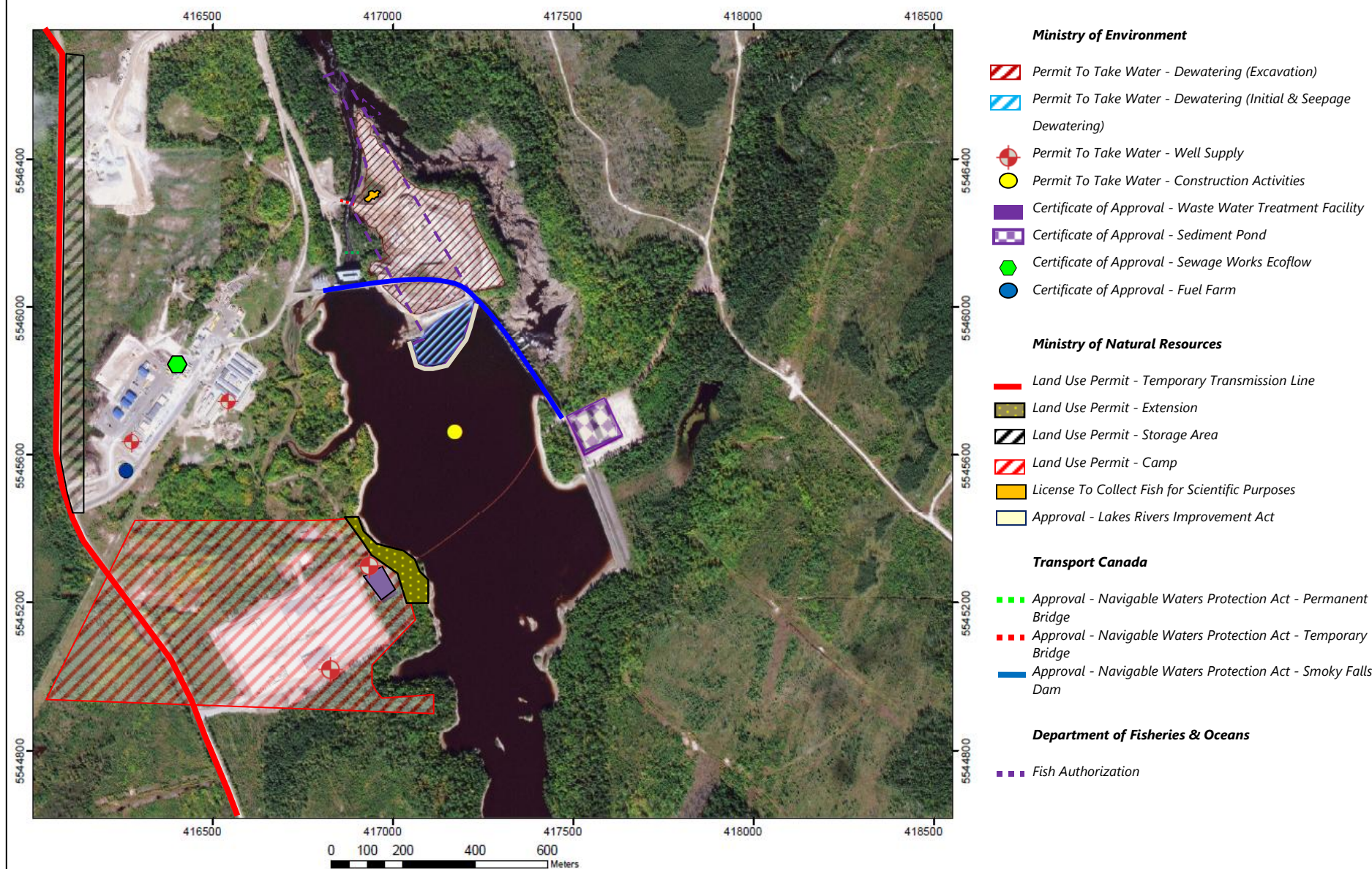
**Department of Fisheries & Oceans**

-  Letter of Advice

**Transport Canada**

-  Approval - Navigable Waters Protection Act - Little Long Dam



**Figure 2: Smokey Falls GS - Permits**




**Figure 3: Harmon GS - Permits**





**Legend**

**Ministry of Natural Resources**


 Approval - Lakes Rivers Improvement Act

**Ministry of Environment**


 Application Pending - Certificate of Approval - Sediment Pond


 Permit To Take Water - Dewatering

**Department of Fisheries & Oceans**

 Letter of Advice

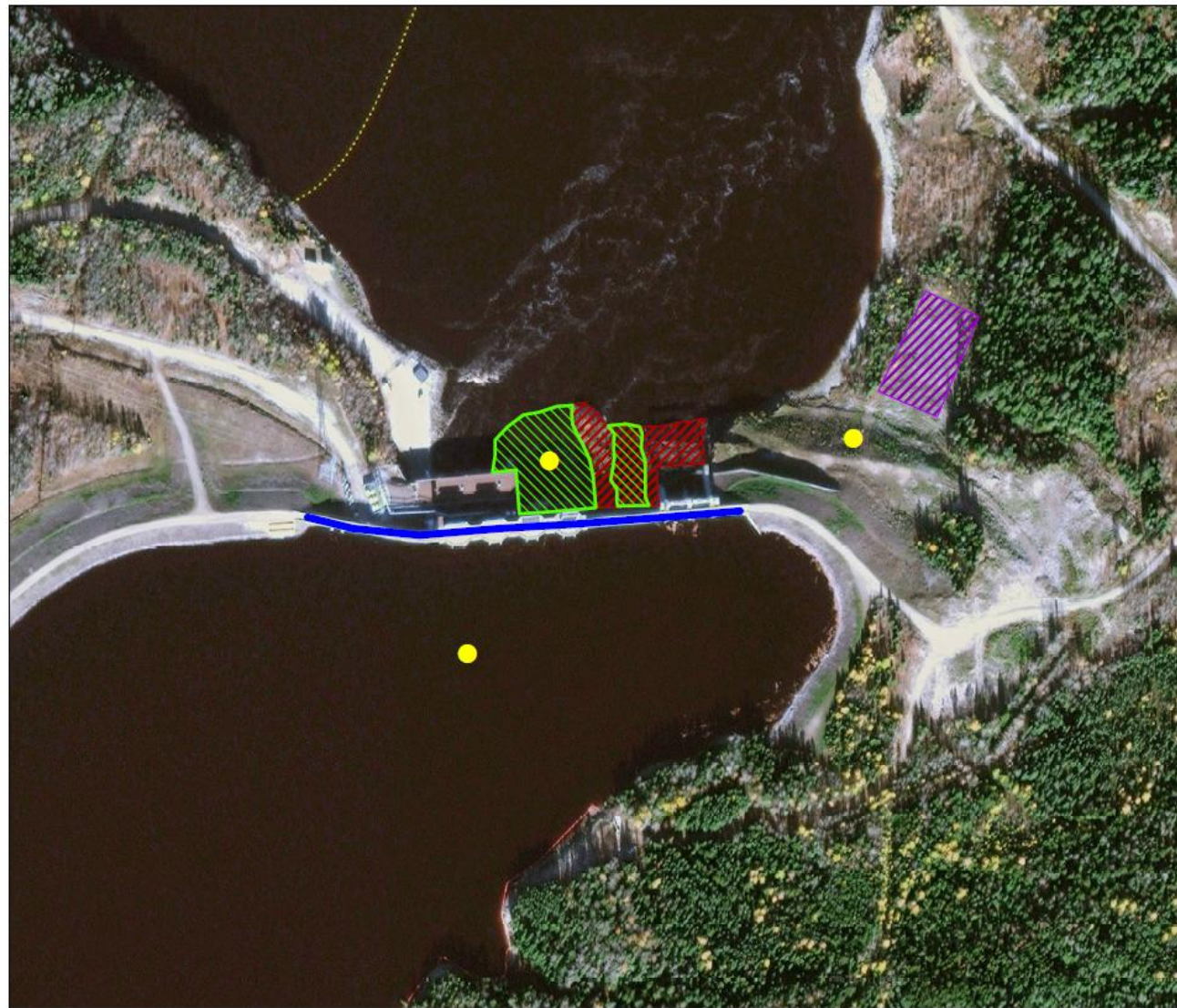
**Transport Canada**

 Navigable Waters Protection Act

 Approval - Navigable Waters Protection Act - Temporary Bridge




**Figure 4: Kipling GS - Permits**




**Legend**


**Ministry of Natural Resources**


 Approval Phase 1A - Marine Access Pad

**Department of Fisheries & Oceans**


 Letter of Advice

**Ministry of Environmental**

 Application Pending for Certificate of Approval - Sediment Pond

 Permit To Take Water – Dewatering

**Transport Canada**

 Approval - Navigable Waters Protection Act - Kipling Dam

**Issues and Concerns**

- The schedule of the EA Terms and Conditions Compliance Plan requires the EWG to coordinate the presentation of several reports to the MECC on a monthly basis. Scheduling, timing and availability of presenters may not permit all of the scheduled reports to be presented to the MECC. In order to stay on schedule the EWG must find a way for the MECC to be given presentations on these reports.

Action Required: EWG look into the possibility of obtaining Web-ex capabilities to allow for presentations to be given to the MECC through the internet and teleconference.