

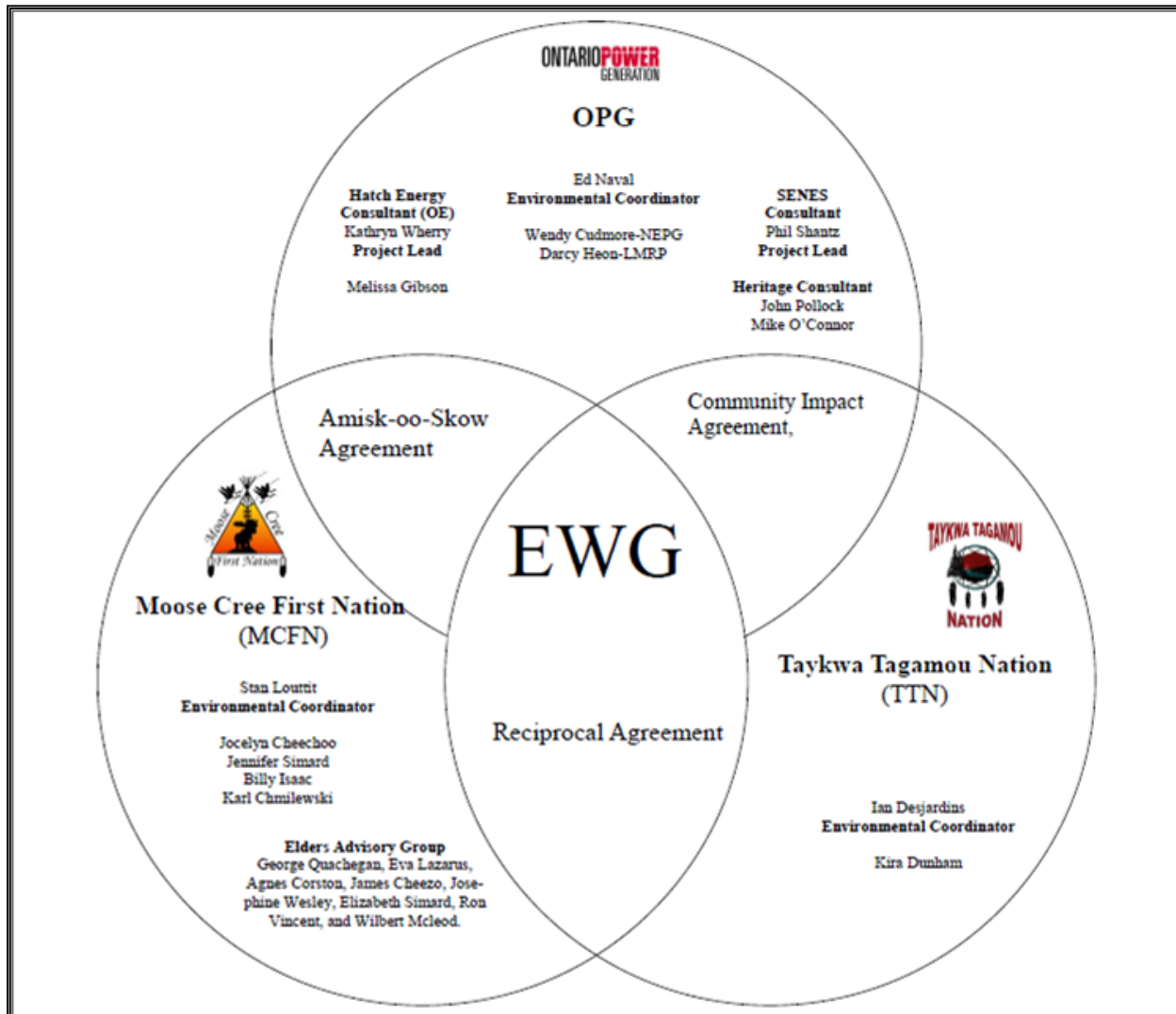
Environmental Working Group

Monthly Report

June 2012

ENVIRONMENTAL WORKING GROUP

Relationship Organizational Chart



- Weekly Environmental Working Group (EWG) and EWG/Kiewit – Alarie, a Partnership (KAP) meetings.
 - The EWG review its Action Items that include priority permit reviews, and deliverables to the Mattagami Extensions Coordinating Committee (MECC).
 - KAP gives EWG a construction up date every week and discusses any upcoming issues and/or urgent permit reviews.
 - Specific items that were discussed are below.
- Inclusion of a First Nation perspective on the Cost Benefit Analysis of Mitigating and Reducing Spill in Adam Creek. MCFN and TTN are currently conducting community interviews. MCFN continues to transcribe the interviews that have been completed.
- Review and compilation of comments on Environmental Effects Monitoring Workshop Report.
- Review of the Fish Habitat Assessment Report and Mercury in Fish Flesh Summary Report intended to fulfill EA Term and Condition 4b.
- Preliminary reviews of the Terrestrial Habitat Restoration Downstream of Kipling report intended to fulfill EA Term and Condition 5b.
- Review of the Interim Measures Agreement as it relates to EA Term and Condition 14c (Permit Review and Compliance Monitoring Protocol).
- Members of the EWG held a teleconference for the "Peoples of the Moose River Basin"; historical text (EA Term and Condition 2c) to discuss next steps in the development of the text. Discussions included a summary of the workshop held in May, as well as a MCFN-TTN youth workshop to be held in by the late summer/early fall.
- Reviewing proposals from potential candidates to facilitate the EWGs Team Building exercise.

ACTIONS TO BE COMPLETED in 2012

	Jan	Feb	Mar	Apr	May	June	July	Aug	Sept	Oct	Nov	Dec
EA Terms and Conditions Environmental Compliance Plan – EWG Review and Submission to MECC.												
EWG Environmental Due Diligence Audit #2												
EWG present to the MECC the result of its review of the LMRP “Operations Report” (Condition 4(a) of EA T&Cs).												
EWG present to the MECC the result of its review of the “Fish Habitat Assessment Report”, and “Baseline Fish Methyl Mercury Report” (Condition 4b. of EA T&Cs) by Hatch.	Date to be determined											
EWG present to the MECC the result of its review of the draft “Cost Benefit Analysis of Mitigating and Reducing Adam Creek Spill” (Condition 4(c) and (e) of EA T&Cs) by Hatch.												
EWG present to the MECC the “Waste Management Plan” (EA T&C 19).												
EWG present to the MECC “The Noise Protocol Plan” (Condition 18 of EA T&Cs).												
EWG present to the MECC “Environmental Monitoring Plan, Lower Mattagami												

	Jan	Feb	Mar	Apr	May	June	July	Aug	Sept	Oct	Nov	Dec
Development" (EA T&C 14).												
EWG present to the MECC the "Erosion Monitoring Plan" (EA T&C 6).												
EWG present to the MECC the "Evaluation of the Need to Conduct Terrestrial Habitat Restoration Downstream of Kipling" (EA T&C 5).												
Draft of Traditional Ecological Knowledge in relation to the Lower Mattagami River Project.												
EWG present to the MECC the results and recommendations of periodic re-evaluations (Condition 10 of EA T&Cs).												

Construction**Little Long**

- Concrete work is progressing well, with 427 m³ of (neat line) concrete poured in the powerhouse and intake areas this month, bringing the total poured to date to 10,335 m³ versus a total volume planned of 12,574 m³.
- Rebar and form work continues to progress at a good pace.
- One of the subcontractors (AFI Hydro) has completed setting and aligning the draft tube stop log sill beams, side guides, and lintels, and has conducted a survey prior to pouring the concrete for those areas.
- The embedded electrical cable damaged in May was replaced by KAP electricians.
- Work to repair the intake gate guides has started, with epoxy injection of the seal face under way.
- Work on the Little Long switchyard has started with excavation, grading, concrete form work and rebar in progress.
- The shoring towers in the intake have been removed, and the scroll case soffit shoring tower erection is nearing completion (Figure 1).

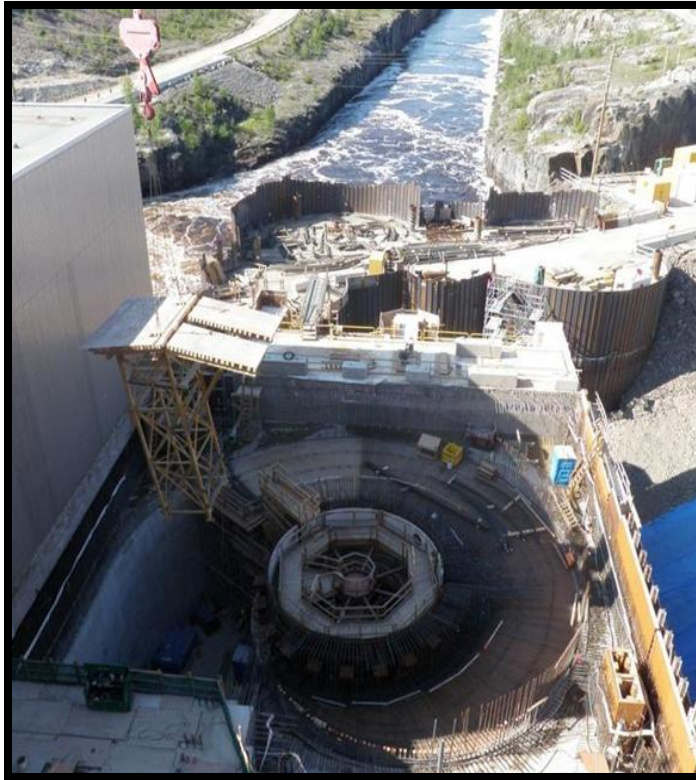


Figure 1: Little Long removal of intake shoring

Harmon

- 945 m³ of (neat line) concrete was poured in the powerhouse and intake areas this month, bringing the total poured to date to 5,756 m³ versus a total volume planned of 10,763 m³.
- Rebar and form work for the next intake and powerhouse pours are advancing.
- Point and patch repairs in the intake are progressing (Figure 2).

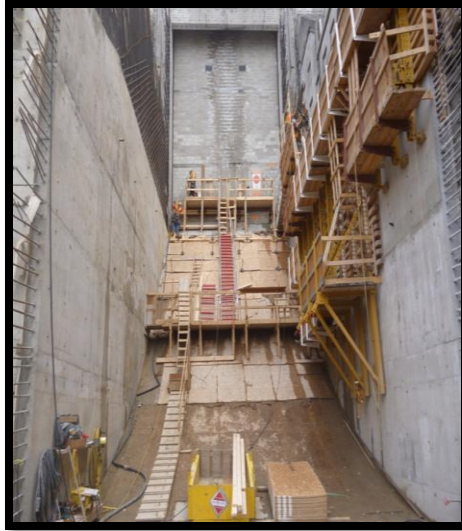


Figure 2: Working on access to G3 intake

Kipling

- Drill and grout of cofferdam Cell #2 and the shore tie-in was completed.
- Cofferdam dewatering started on June 9th, and was successfully completed on June 25th (Figure 3). Some leakage was identified at Cell #3, but was stopped with a mixture of gravel, hydro-lite, and bentonite pellets placed on the river side of the cofferdam.
- The Unit 3 intake block wall removal complete.
- Drill and blast operations have started in the intake area, and excavation is under way in the powerhouse area.



Figure 3: Kipling dewatering completed on June 25

Smoky Falls

- 6,574 m³ of (neat line) concrete was poured this month in the service bay, powerhouse, and intake areas, bringing the total poured to date to 37,416 m³ compared with a total volume planned of 135,913 m³.
- Twenty four other concrete pours are in various stages of work (form work started and/or rebar being installed) and progressing in the intake, powerhouse, and East gravity dam areas.
- Drilling for the galvanized rock anchors for the permanent bridge is complete and anchor installation is under way.
- West gravity dam: a blasting proposal was received from SLI for the removal of the embedded wood on the downstream face of the existing dam. Test blasts are being planned.
- Several concrete pours were completed for the East Gravity Dam (Figure 4).
- Work in the switchyard (concrete form work, rebar, pours, and backfilling) continues to progress.

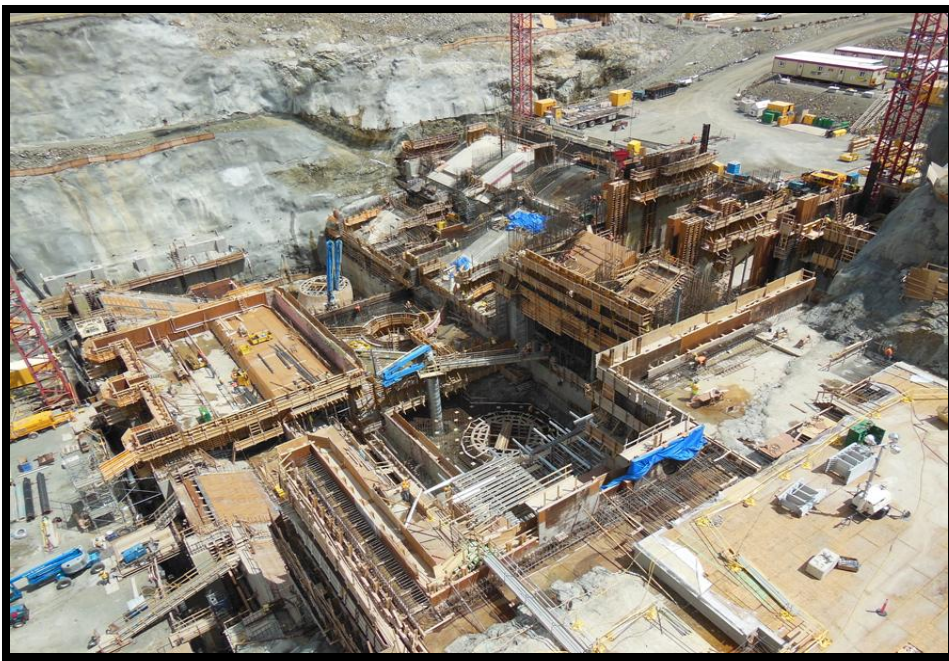


Figure 4: Smoky Falls Site Overview from West Tower Crane

Monthly Summary – June 2012

SPILLS			
No. of Spills:		15; Spill Reports 226-240 (see Figure 6 for LMRP spills breakdown).	
Classification of Spills:		<u>Project Classification</u> Minor – 7 Moderate – 1 Major –1 To Water - 0 <u>MOE Classification</u> Non-reportable - 8 Reportable to MOE <ul style="list-style-type: none">- Class C – 1- Class B – 0- Class A – 0	
<u>Reportable Spills</u>			
No.	Quantity /Product Spilled	Spill Site	Reason for being Reportable
1	Genetron R-22 (Freon)	Smoky Falls – Batch plant	Reported by KAP to MOE Spill Action Centre, but later determined that the spill was captured under EPA Reg. 675/09 exemption for reffridgerants, as the amount released was less than 100 kg (1200 litres of R22 is equal to 4.392 kg).
Project Classification (KAP) Minor: ≤ 10L Moderate: Between 10L and 100L Major: ≥100L To Water: Any amount is reportable to the MOE (See Figure 7: KAP Spills Response Flowchart)			MOE Classification Non-reportable: < 100L Reportable to MOE <ul style="list-style-type: none">• Class C - Less Serious• Class B – Serious• Class A – Very Serious
Sediment Pond Exceedance of Effluent Objective			
No. of Exceedance days recorded	Location	Mitigation Measures used	
13 (June 13-23, 26 and 30)	Kipling	The increase in turbidity and pH levels were due to the dewatering activities at the Kipling cofferdam. KAP added Alum and citric acid to the pond as a corrective measure, in addition to the installation of baffle curtains (June 18) and a filtration system which filtered the water before it was pumped to the sediment pond. The sediment pond was further filtered through dewatering bags and straw bales, which then discharged into natural vegetation and slowly made its way to a drainage ditch that flows into the headpond. A turbidity curtain was also installed at the discharge point to the river.	

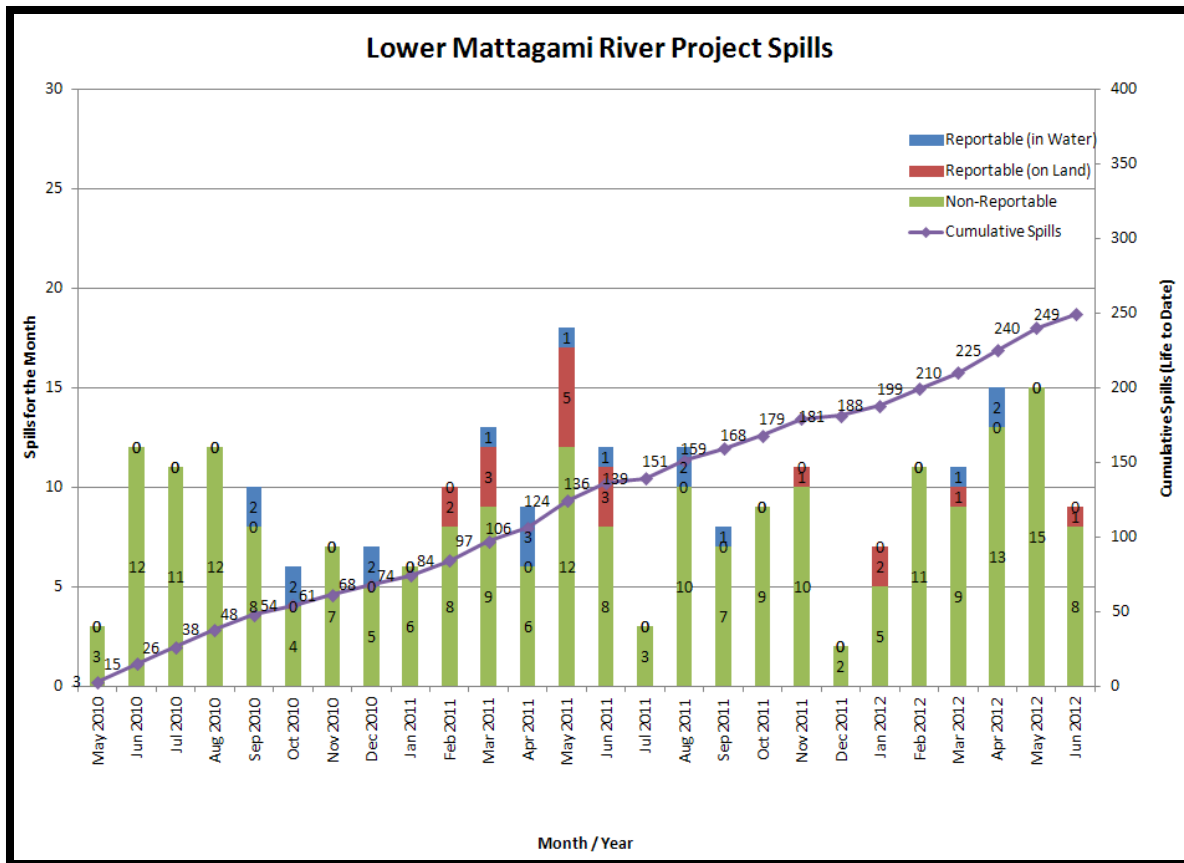


Figure 6: Lower Mattagami River Project spills

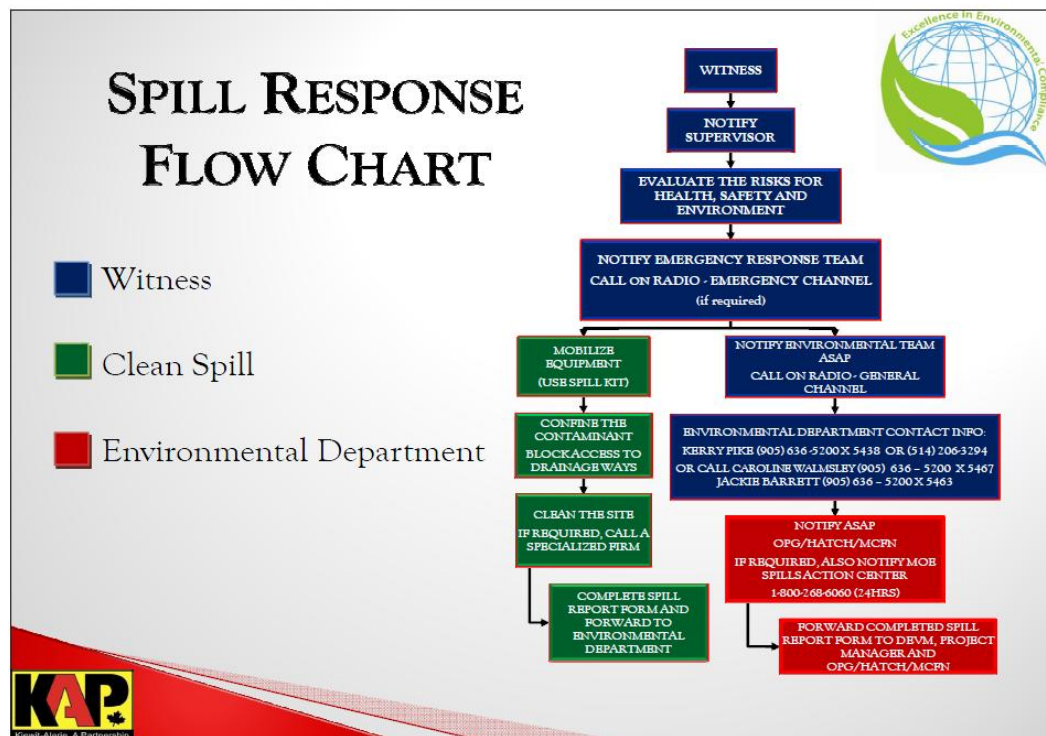


Figure 7: KAP Spills Response Flowchart

PERMIT AND APPROVAL REVIEW			
No. Reviewed:	0	List:	
No. Sent to KAP:	0	List:	
Reports Review			
No. Reviewed for KAP	0	List:	
No. Sent to KAP	0	List:	
No. Reviewed for MECC	5	List:	On-going: <ul style="list-style-type: none"> • Cost Benefit Analysis of Mitigating and Reducing Spill in Adam Creek. • Mercury in Fish Flesh Summary Report. • Fish Habitat Assessment Report • Terrestrial Habitat Restoration Downstream of Kipling GS
No. Review Completed	3	List:	<ul style="list-style-type: none"> • Operation Overview Report. • Waste Management Plan • Noise Control Plan
REQUESTS FOR INFORMATION (RFIs)			
No. Reviewed:	0	List:	n/a
No. Sent to KAP:	0	List:	n/a
See figures 8 to 13 below for site location of the permits that have been or are pending approval.			



Figure 9:
Lower Mattagami River Project
Harmon GS - Permits

Legend

Department of Fisheries & Oceans


 Letter of Advice


Transport Canada

 Navigable Waters Protection Act - Temporary Bridge


 Navigable Waters Protection Act - Harmon Dam


Ministry of Environment


 Amended - Certificate of Approval - Sediment Pond


 Permit To Take Water - Dewatering

Ministry of Natural Resources

 Lakes Rivers Improvement Act - Phase 1A Marine Access Pad

 Lakes River Improvement Act - Phase 1B - Temporary Cofferdam

 Lakes River Improvement Act - Phase 2 Powerhouse Upgrades

 License To Collect Fish for Scientific Purposes



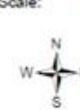
Kiewit - Alarie, A Partnership

Created By: Caroline Walmsley

Datum: Zone 17U

Date: January 19, 2012

Scale: 1: 5,500



ONTARIO POWER
GENERATION

0 100 200 400
Meters

LMRP-FJ28-ENV-DWG-0001-2012-01-19-R04



Figure 10:
Lower Mattagami River Project
Kipiting GS - Permits

Legend

Department of Fisheries & Oceans

Letter of Advice

Transport Canada

Approval - Navigable Waters Protection Act - Kipiting Dam

Ministry of Environmental

Amended Certificate of Approval - Sediment Pond

Permit To Take Water - Dewatering

Ministry of Natural Resources

Lakes River Improvement Act - Phase 1A - Marine Access Pad

Lakes River Improvement Act - Phase 1A - 1 Deflector Wall

Lakes River Improvement Act - Phase 1A - 2 Spillway Location Revised

Lakes River Improvement Act - Phase 1B Temporary Cofferdam

Lakes River Improvement Act - Phase 2 Powerhouse Upgrades

Licence to Collect Fish for Scientific Purposes



Kiewit - Alarie, A Partnership

Created By: Caroline Walmsley

Datum: Zone 17U

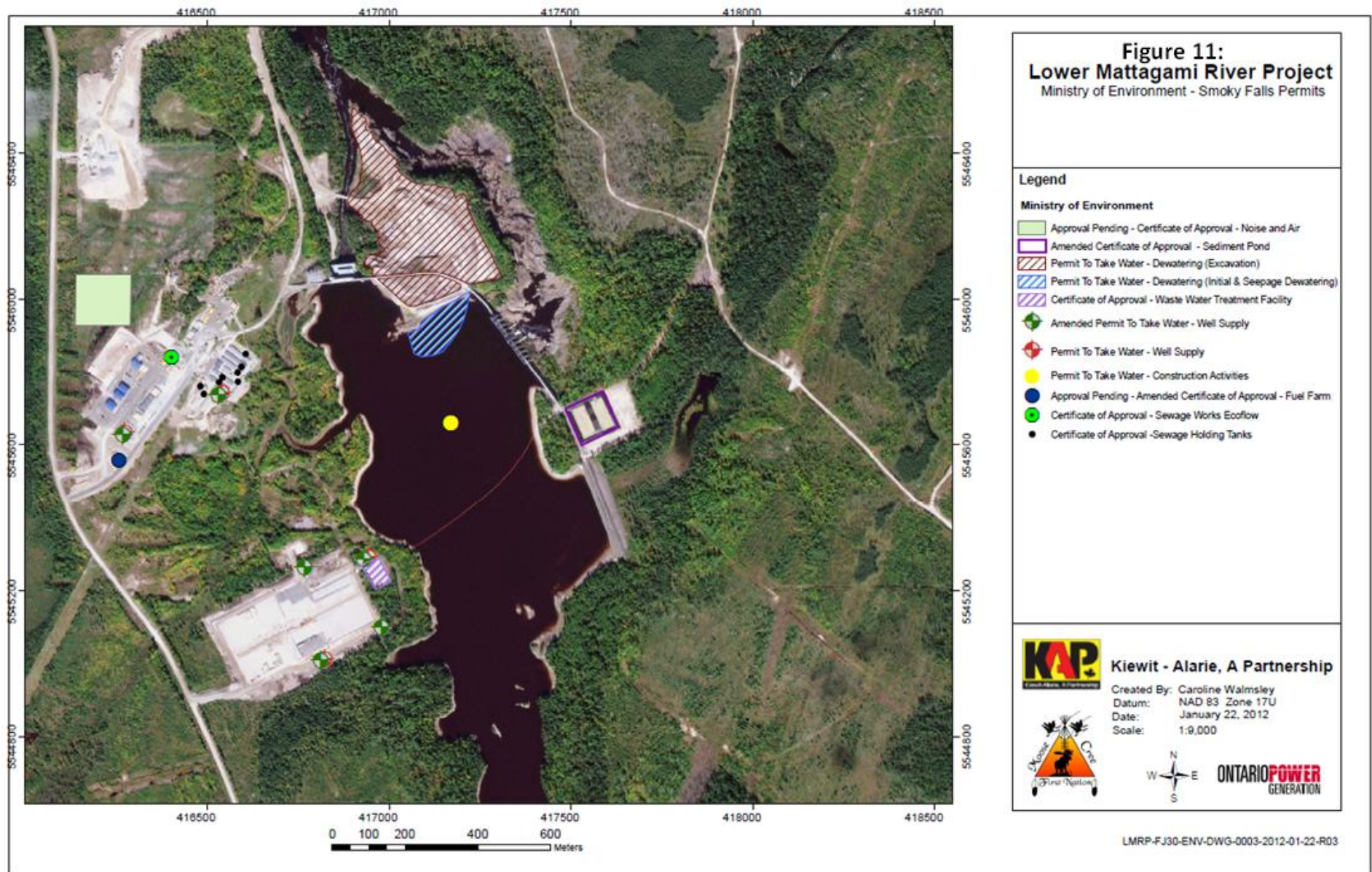
Date: January 19, 2012

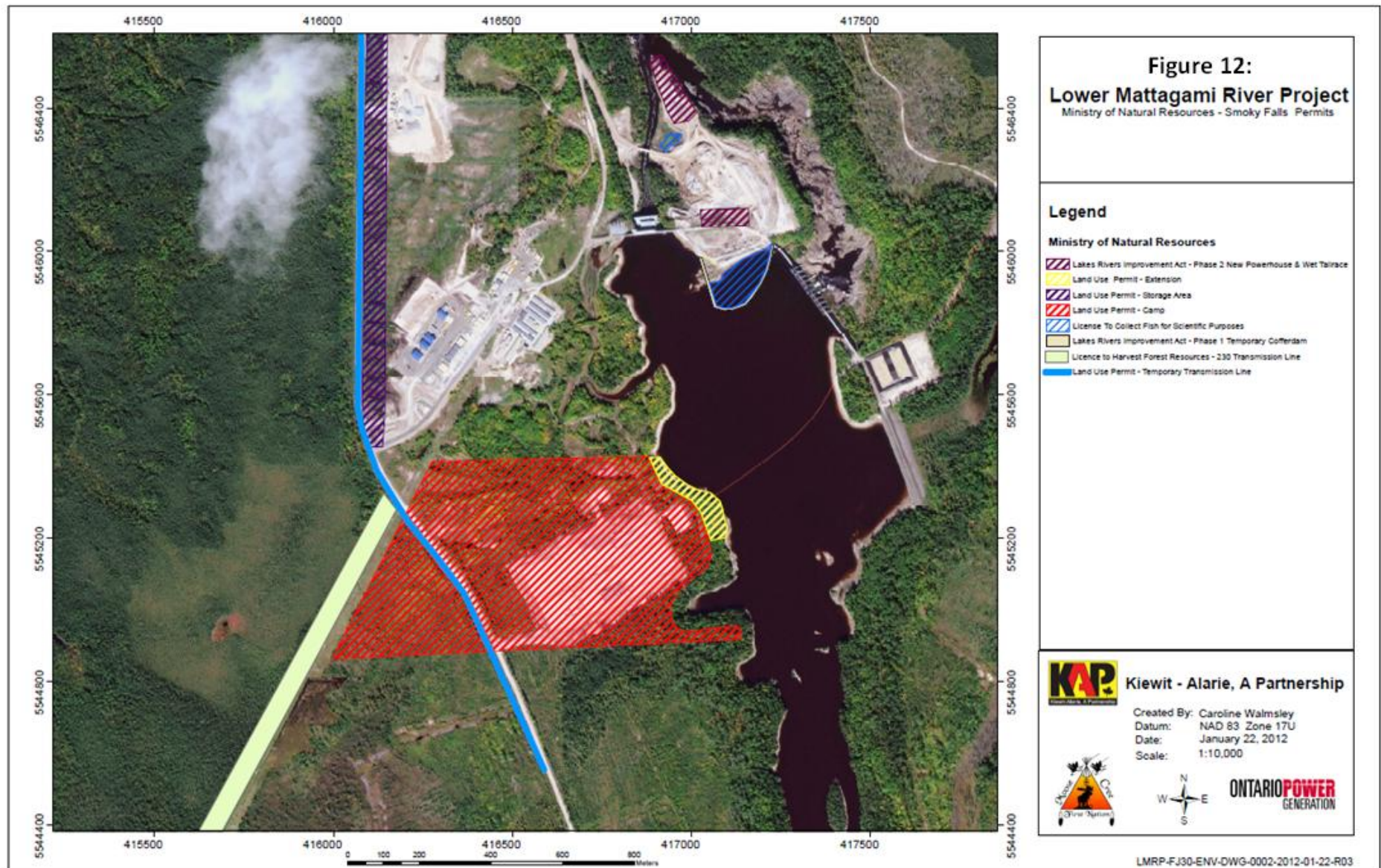
Scale: 1: 5,500

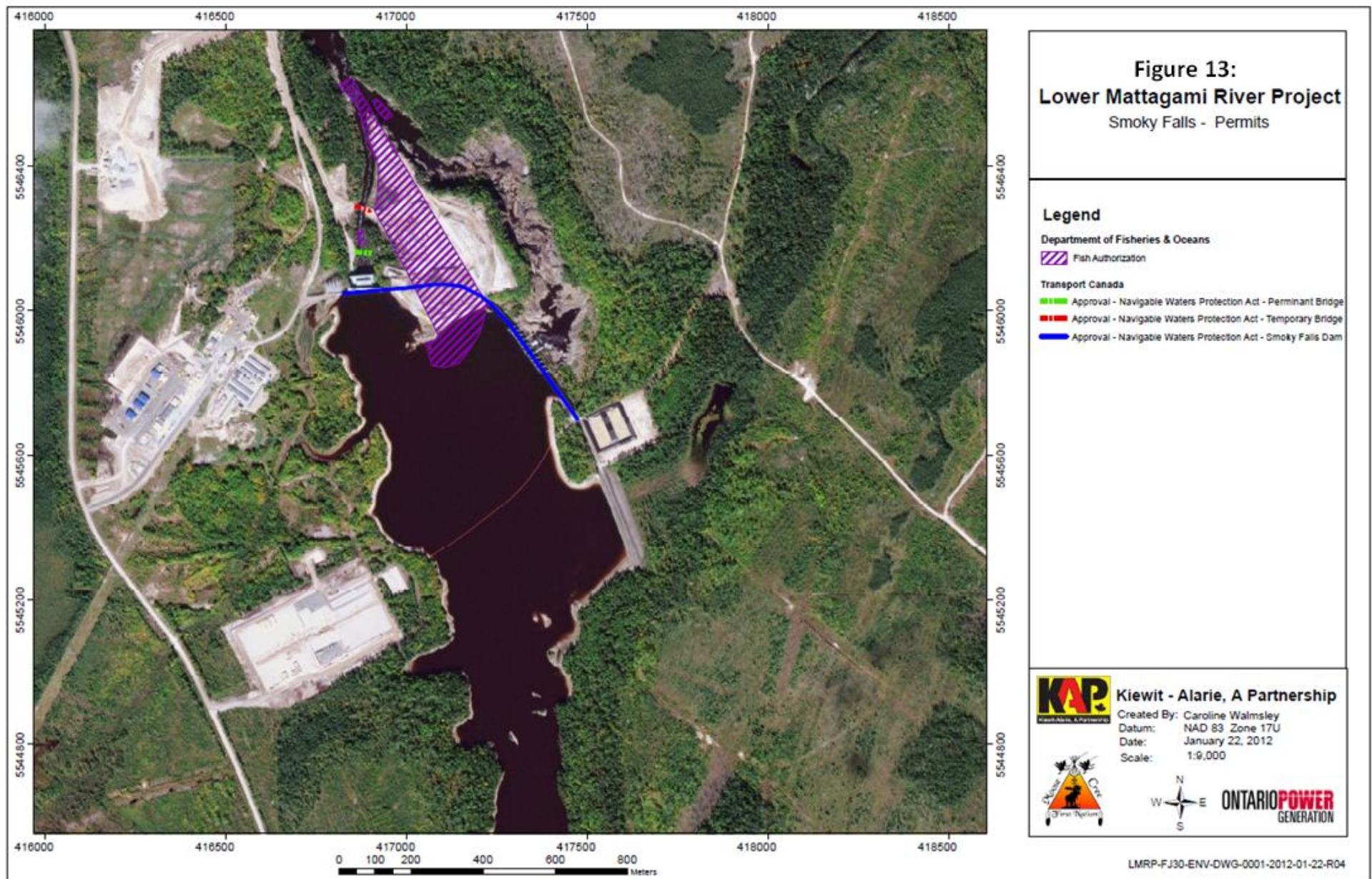


ONTARIO POWER
GENERATION

LMRP-FJ27-ENV-DWG-0001-22012-01-19-R04







Issues and Concerns

- The EWG would like to have more of a formal memo type document that outlines the MECC interpretations for the EA Terms and Conditions.
- The EWG would like the MECC to improve its teleconference phone systems, or have a protocol in place.

Actions Required: EWG to bring up these recommendation to the MECC during the July 11, 2012 meeting.