



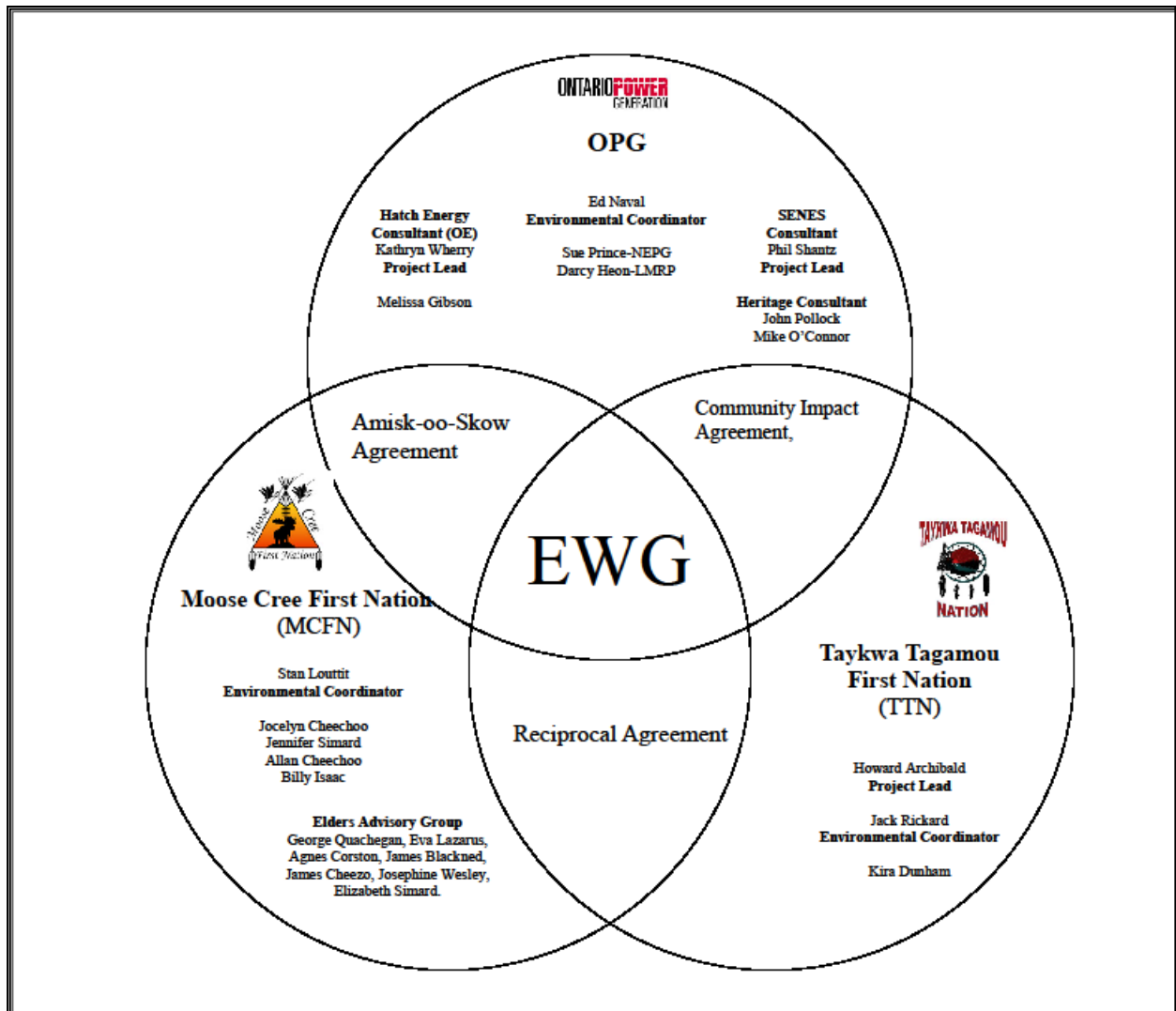
Environmental Working Group

Monthly Report

June 2011

ENVIRONMENTAL WORKING GROUP

Relationship Organizational Chart



ACTIONS COMPLETED

- Weekly Environmental Working Group (EWG) and EWG/Kiewit – Alarie, a Partnership (KAP) meetings.
 - The EWG review its Action Items that include priority permit reviews, and deliverables to the Mattagami Extensions Coordinating Committee (MECC).
 - KAP gives EWG a construction up date every week and discusses any upcoming issues and/or urgent permit reviews.
 - Specific items that were discussed are below.
- Preparation for Environmental Effects Monitoring Workshop – Continuing coordination of logistics for workshop and confirmation of presenters/EWG attendee list. Revision of the EEM Workshop Framework and Plan to update and reflect EWG comments and most recent information.
- Discussions and review of Smoky Falls Fish Habitat Compensation Plan Revision with KAP regarding KAP's proposed changes to the current fish habitat compensation plan. Reviewing Fish Habitat Compensation.
- Ongoing review and compilation of Traditional Ecological Knowledge (TEK) for the Lower Mattagami River Project.
- Determination of Project Environmental Reporting review schedule for EWG and presentation of the Reports to the MECC.
- Review of Project Environmental Reports required for the month of July 2011 (Operations Overview report) .
- Further discussion of Project Environmental Report from month of May 2011 and June 2011, and Term and Condition #4.
- Environmental Lead Auditor accreditation training.

ACTIONS TO BE COMPLETED FOR 2011

	Jan	Feb	Mar	Apr	May	June	July	Aug	Sept	Oct	Nov	Dec
Draft of Traditional Ecological Knowledge in relation to the Lower Mattagami River Project.												
Environmental Effects Monitoring Workshop												
Environmental Assessment (EA) Variances – EWG Review and Submission to MECC												
EA Terms and Conditions Environmental Compliance Plan – EWG Review and Submission to MECC.												
EWG Terms of Reference (ToR) – Submission to MECC												
EWG Work Plan – Submission to MECC												
EWG Environmental Due Diligence Audit #1												
Environmental Audit – Accreditation Training												
EWG presentation to the MECC the LMRP "Operations Report" (fulfills Condition 4(a) of EA T&Cs).												

	Jan	Feb	Mar	Apr	May	June	July	Aug	Sept	Oct	Nov	Dec
EWG present to the MECC "Fish Habitat Assessment Report", and "Baseline Fish Methyl Mercury Report" (fulfills Condition 4b. of EA T&Cs).												
EWG present to the MECC "Cost Benefit Analysis of Mitigating and Reducing Adam Creek Spill" (fulfills Condition 4(c) and (e) of EA T&Cs).												
EWG present to the MECC the methods and means of ensuring that restrictions on hunting and fishing (fulfills Condition 5(a) and (c) of EA T&Cs).												
EWG present to the MECC "Terrestrial Habitat Restoration Downstream of Kipling GS" (fulfills Condition 4b. of EA T&Cs).												
EWG present to the MECC a Public Information Program to communicate the results of fish methyl mercury baseline reports (fulfills Condition 7(a) and (b) of EA T&Cs).												
EWG present to the MECC the cumulative effects data developed during the Federal EA process (fulfills Condition 8(a) and (b) of EA T&Cs).												
EWG present to the MECC the results and recommendations of periodic re-evaluations (fulfills Condition 10 of EA T&Cs).												
EWG present to the MECC "Hydroelectric Generating Facilities Decommissioning Plan" (fulfills Condition 11(a) of EA T&Cs).												TBD in 2012
EWG present to the MECC "The Noise Protocol Plan" (fulfills Condition 18 of EA T&Cs).												TBD in 2012

Construction**General**

- Permanent Camp – Phase 4 dormitory erection continued from last month. As of the end of June, 697 rooms were available on site, split between the permanent and temporary camps.
- Mould was discovered in some of the unoccupied dorms. Testing has confirmed that it is not on the list of hazardous moulds as identified by Health Canada. A cleaning campaign is under way.
- Batch Plant – Electrical and mechanical issues with the ice plant are being addressed. A new transformer was installed to take the additional load from the ice plant compressor. The weigh scale was installed on its foundation and grading around the scale was completed.
- The megadome is being erected at the Smoky Falls site. As of June 30th, twenty nine of thirty four frames are assembled, erected, anchored to concrete blocks and braced together (Figure 1).



Figure 1: Working on the Megadome construction

Smoky Falls

- Rock excavation and support is complete on the west side of the approach channel. Rock bolt grouting on the west side is outstanding.
- Stabilization of the rock face affected by the rock slide and other areas of concern continues using shotcrete and rock bolts (Figure 2).
- Excavation of Unit 3 is under way.
- The first two reinforced concrete pours at Smoky Falls have successfully been completed. The first pour occurred on June 18th and was 474 m³ and the second pour occurred on June 29th and was 300 m³.



Figure 2: Installing the rockbolts on the East Wall in Zone 1

Little Long

- Drill and shoot operations at the bullnose area are ongoing and 14 blasts are complete for the bullnose and upper bench penstock areas (Figure 3).
- All small trees have been removed from the east wall and mechanical and hand scaling is complete. Wire mesh installation is proceeding.

- The penstock mud slab was poured on June 22nd (38 m³).
- Removal of logs and debris from the G3 intake continued, but was put on hold as of June 22nd to allow for the installation of the sectional gates.



Figure 3: Excavation operation in the Bull Nose area

Harmon

- A spillway test occurred on June 2nd. There was minor right bank erosion at the toe of the roadway when spilling at gate 1. The spill test was considered successful, and rip rap will be installed to protect the roadway.
- Cofferdam Cell #1 construction was completed with the completion of sand backfilling.
- The construction power transformer was temporarily relocated to repair some ground subsidence and returned to its original location once the repairs were completed.
- Work to prepare the shore-tie in template and begin installation is ongoing. The shore tie-in will be installed once cofferdam Cell #2 has its spud piles installed (Figure 4).
- Clamming for trash removal in the area of cofferdam Cell #2 is complete and the Cell #2 template is in position on a barge. Spud pile installation for Cell #2 is under way.



Figure 4: Harmon - Working on the Cell 2



Figure 5: Kipling Site – Tower Crane

Kipling

- The spillway test on June 2nd was considered successful, as it allowed 600 cms to be spilled at all the Lower Mattagami stations.
- On June 3rd, KAP environment representatives declared the official departure of the nesting birds from the intake hoist frame. The tower crane was erected and as of June 24th it was erected and final testing was under way (Figure 5).
- An office pad near the Kipling west powerhouse area has been cleared of all topsoil and grubbing material. The excavated area was backfilled and office trailers are being mobilized to the constructed pad. Fibre optic cables for communications have been brought to the site but are not yet connected to the office trailers.

Monthly Summary – June 2011

SPILLS			
No. of Spills:		12; Spill Reports 125 – 136 (see Figure 6 for LMRP spills breakdown).	
Classification of Spills:		<u>Project Classification</u> Minor – 10 Moderate – 1 Major – 0 To Water - 1 <u>MOE Classification</u> Non-reportable - 8 Reportable to MOE <ul style="list-style-type: none">- Class C – 4- Class B – 0- Class A – 0	
<u>Reportable Spills</u>			
No.	Quantity /Product Spilled	Spill Site	Reason for being Reportable
1	6 L/ Diesel Fuel	Smoky Falls Island (New Tailrace Box Cut)	Reportable on Land - spill came from non-motorized vehicle
2	1 L /Vegetable based hydraulic oil	Harmon (Marine Pad)	Reportable - spill came from non-motorized vehicle
3	10 m ³ /Sewage	Smoky Falls Permanent Camp Waste Water Treatment Plant	Reportable in Water
4	30 L/Sewage	Smoky Falls – Powerhouse Excavation	Reportable on Land – due to quantity
Project Classification (KAP) Minor: ≤ 10L Moderate: Between 10L and 100L Major: ≥100L To Water: Any amount is reportable to the MOE (See Figure 7: KAP Spills Response Flowchart)			MOE Classification Non-reportable: < 100L Reportable to MOE <ul style="list-style-type: none">• Class C - Less Serious• Class B – Serious Class A – Very Serious

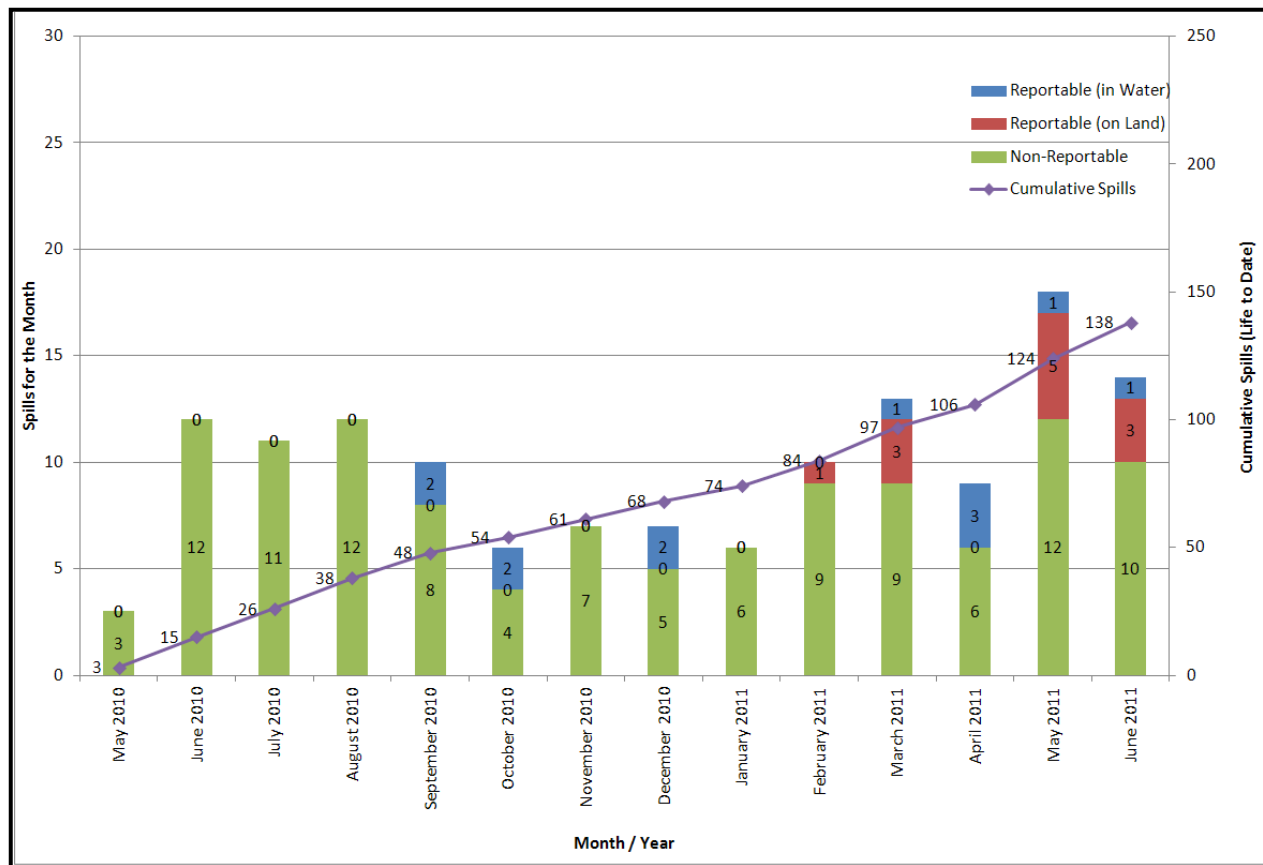


Figure 6: Lower Mattagami River Project spills

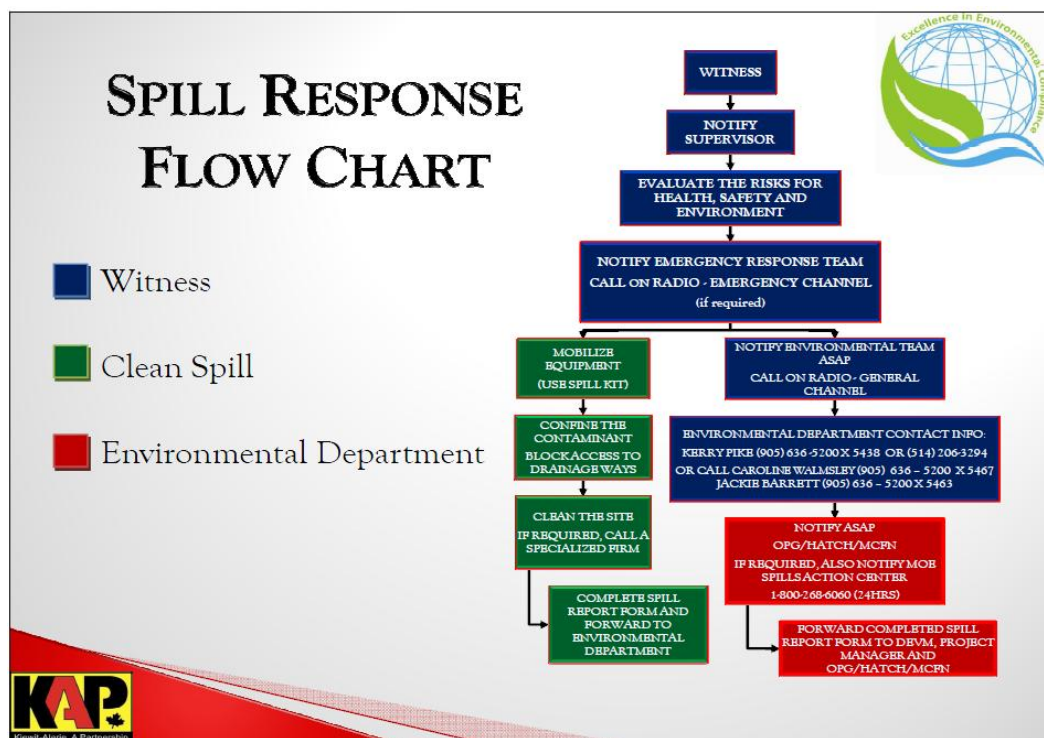


Figure 7: KAP Spills Response Flowchart

PERMIT AND APPROVAL REVIEW			
No. Reviewed:	3	List:	<ul style="list-style-type: none">• Smoky Falls - Fish Habitat Compensation• Harmon Generating Station (GS) Extension - MNR Lakes and Rivers Improvement Act (LRIA) Plans and Specifications Approval• Smoky Falls Powerhouse LRIA Approval
No. Sent to KAP:	2	List:	<ul style="list-style-type: none">• Smoky Falls - Fish Habitat Compensation• Harmon GS Extension - MNR LRIA Plans and Specifications Approval• Smoky Falls Powerhouse LRIA Approval
REQUESTS FOR INFORMATION (RFIs)			
No. Reviewed:	1	List:	Smoky Falls-Proposed Permanent Bridge Approach
No. Sent to KAP:	0	List:	N/A
See figures 8 to 11 below for site location of the permits that have been or are pending approval.			

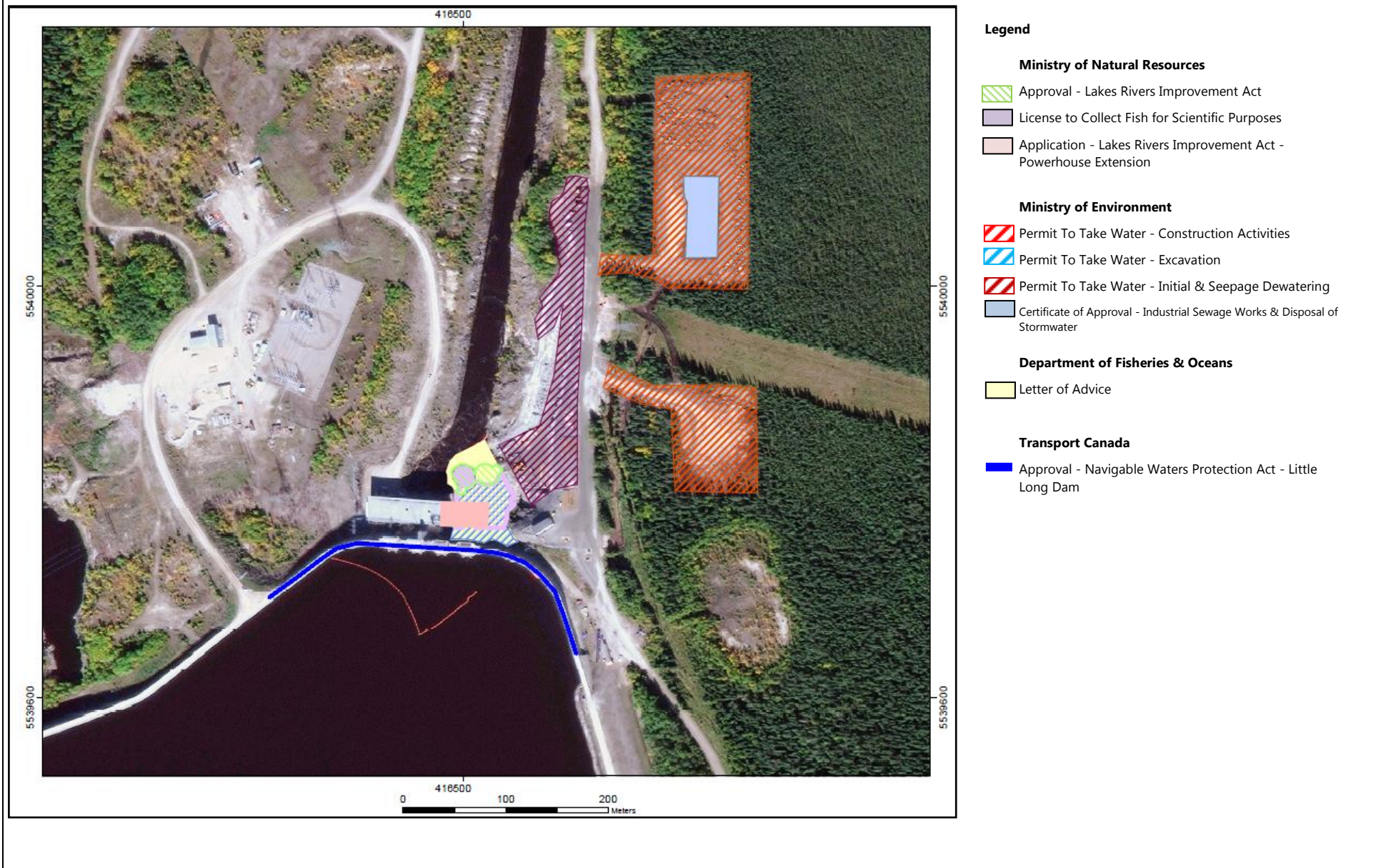
Figure 8: Little Long GS - Permits

Figure 9: Smokey Falls GS - Permits

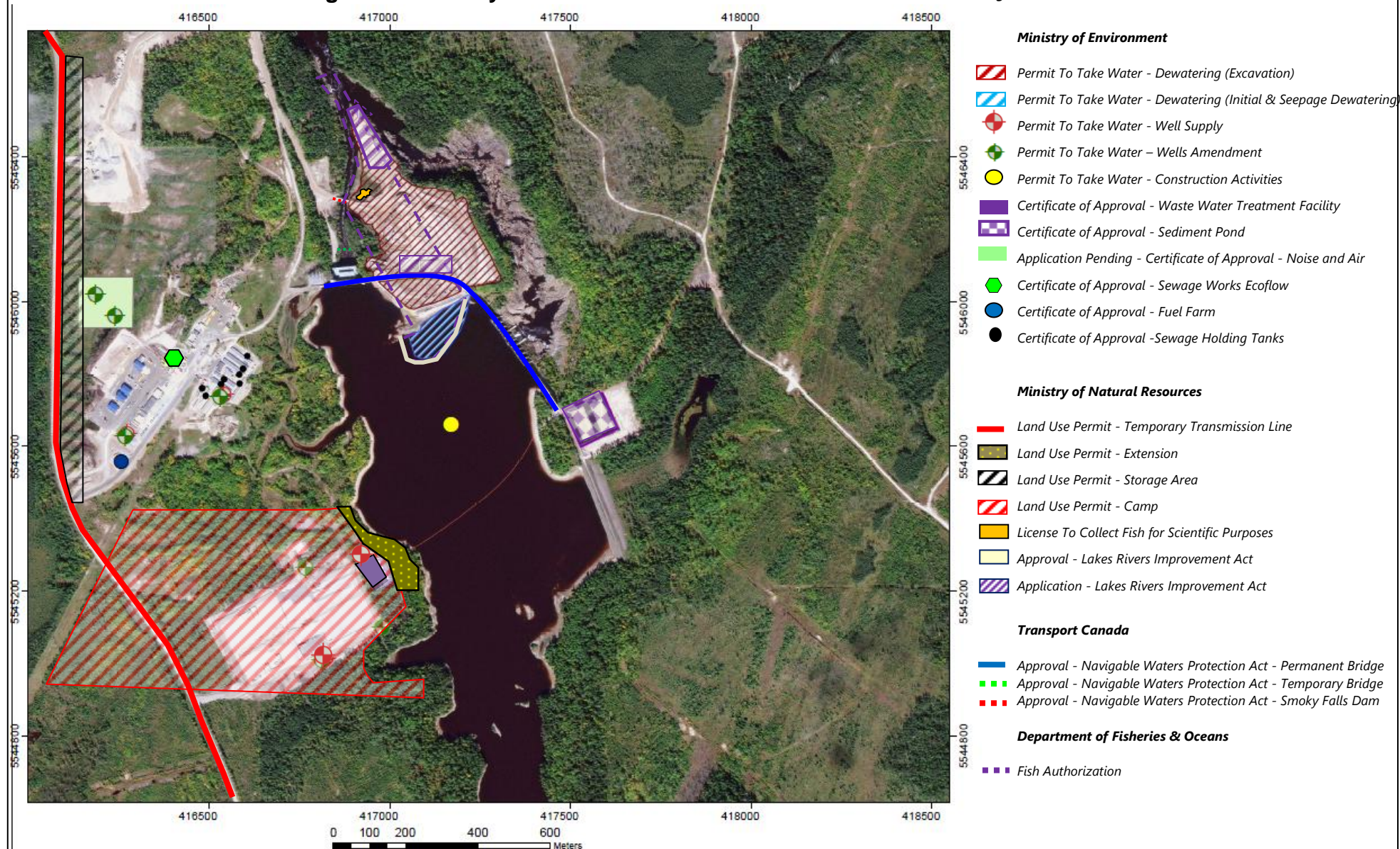


Figure 10: Harmon GS - Permits**Legend****Ministry of Natural Resources**

- Approval - Lakes Rivers Improvement Act
- Lakes River Improvement Act - Phase IB – Cofferdam
- License to Collect Fish for Scientific Purposes

Ministry of Environment

- Application Pending - Certificate of Approval - Sediment Pond
- Permit To Take Water - Dewatering

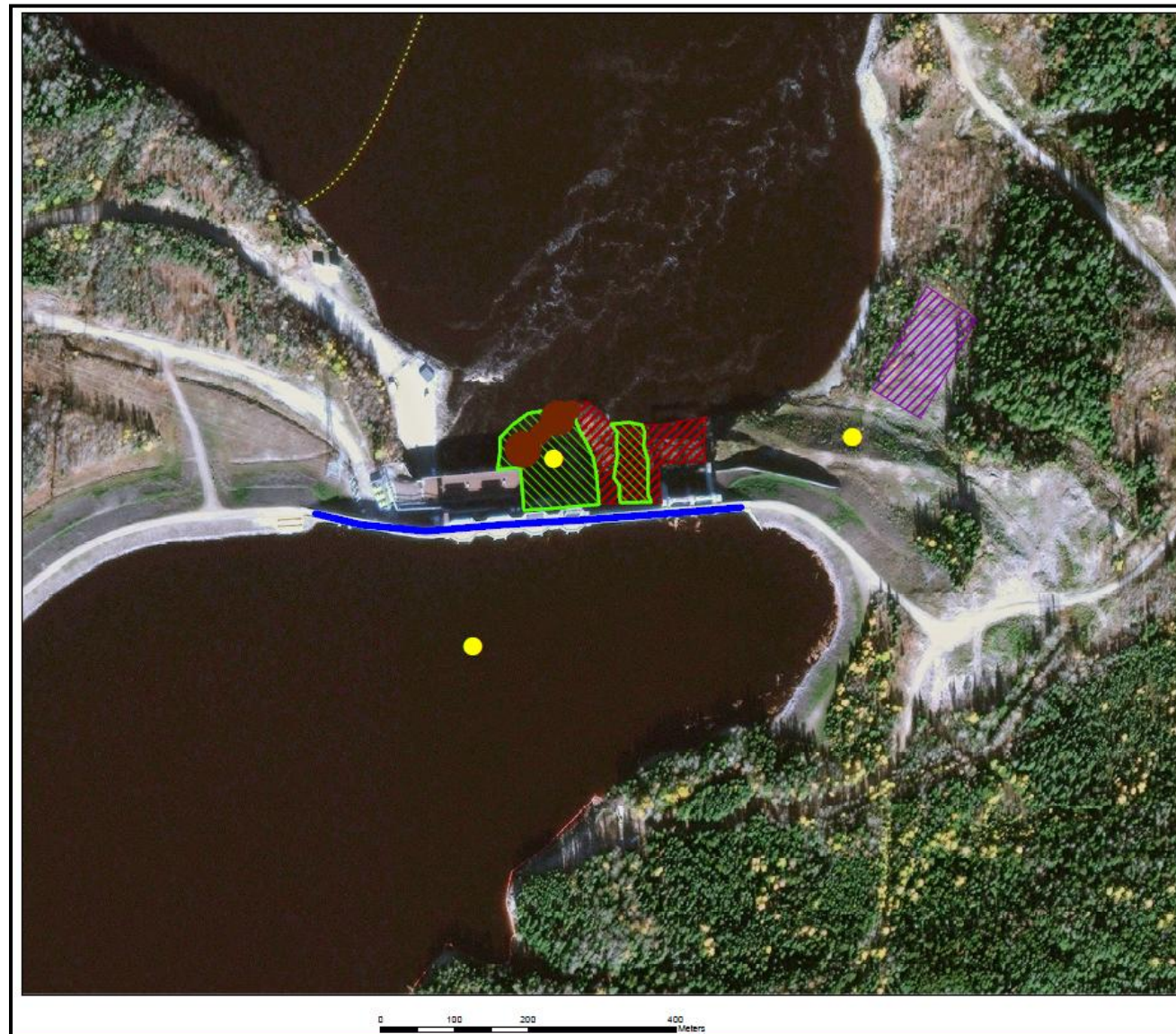
Department of Fisheries & Oceans

- Letter of Advice

Transport Canada


- Navigable Waters Protection Act
- Approval - Navigable Waters Protection Act - Temporary Bridge


Figure 11: Kipling GS - Permits




Legend

Ministry of Natural Resources


 Approval Phase 1A - Marine Access Pad


 Application Pending - Lakes Rivers Improvement Act - Phase II

Department of Fisheries & Oceans


 Letter of Advice

Ministry of Environmental

 Application Pending for Certificate of Approval - Sediment Pond

 Permit To Take Water - Dewatering

Transport Canada

 Approval - Navigable Waters Protection Act - Kipling Dam

Issues and Concerns

- Due to summer schedules, members of the EWG are having trouble discussing the technical reviews of reports related to the EA Terms and Conditions with their respective MECC members.

Action Required: MCFN members have been able to meet with their MECC member on a regular basis. The related members of the EWG and the MECC must continue to schedule time to discuss the technical reviews of the EA Term and Condition reports.

- Concerns were expressed during the EWG meetings that KAP was once again enquiring about using the walking trail within the Moose Cree heritage zone.

Action Required: The MCFN environmental coordinator will directly contact KAP (Dana Francis) on this issue. The MCFN will make a decision on whether or not the walking trail within the Moose Cree heritage zone can be used.