

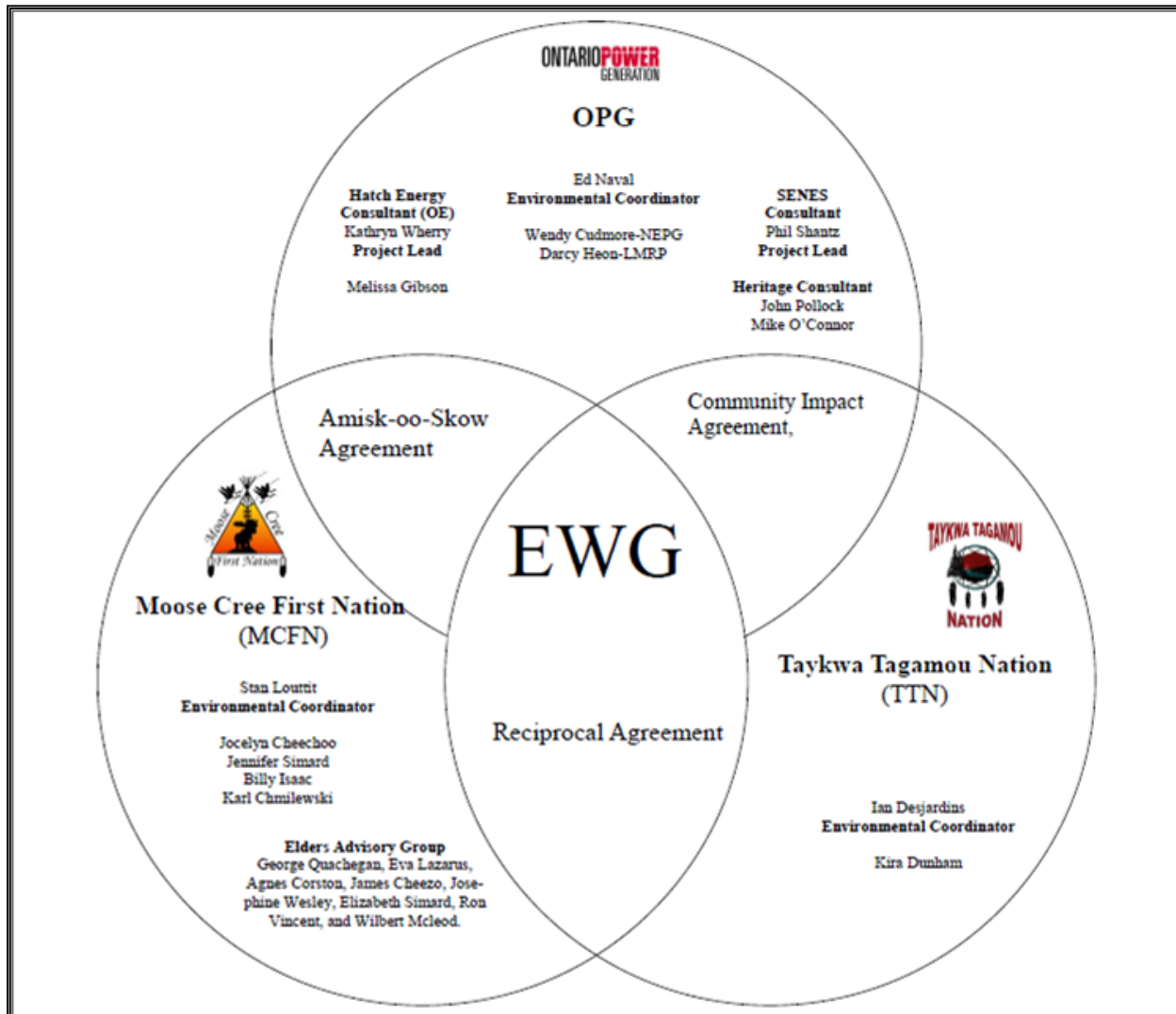
Environmental Working Group

Monthly Report

July 2012

ENVIRONMENTAL WORKING GROUP

Relationship Organizational Chart



- Weekly Environmental Working Group (EWG) and EWG/Kiewit – Alarie, a Partnership (KAP) meetings.
 - The EWG review its Action Items that include priority permit reviews, and deliverables to the Mattagami Extensions Coordinating Committee (MECC).
 - KAP gives EWG a construction up date every week and discusses any upcoming issues and/or urgent permit reviews.
 - Specific items that were discussed are below.
- On July 10, 2012, members of the EWG conducted the second annual Environmental Due Diligence Audit on KAPs Environmental Management Plan (EMP). Preliminary results indicate that KAP is following its EMP appropriately. An Audit report will be finalised in the fall.
- Inclusion of a First Nation perspective on the Cost Benefit Analysis of Mitigating and Reducing Spill in Adam Creek. TTN are currently conducting community interviews. MCFN have completed their interviews and will meet with TTN to coordinate the First Nation perspective.
- Environmental Effects Monitoring Workshop Report was finalised and sent out on July 27, 2012, to all participants.
- Review of the Fish Habitat Assessment Report and Mercury in Fish Flesh Summary Report intended to fulfill EA Term and Condition 4b is ongoing.
- Preliminary reviews of the Terrestrial Habitat Restoration Downstream of Kipling report intended to fulfill EA Term and Condition 5b.
- Review of the Interim Measures Agreement as it relates to EA Term and Condition 14c (Permit Review and Compliance Monitoring Protocol).
- Members of the EWG held another teleconference for the "Peoples of the Moose River Basin"; historical text (EA Term and Condition 2c) on July 27, 2012, to discuss next steps in the development of the text. Discussions included potential dates/formats for a MCFN-TTN youth workshop, as well as roles and responsibilities for each of group on the teleconference (writing teams were established). In addition a blog was created for those who are contributing to the text.
- The EWG chose a candidate to facilitate the EWGs Team Building exercise; plans have moved forward to consider potential dates.

ACTIONS TO BE COMPLETED in 2012

	Jan	Feb	Mar	Apr	May	June	July	Aug	Sept	Oct	Nov	Dec
EA Terms and Conditions Environmental Compliance Plan – EWG Review and Submission to MECC.												
EWG Environmental Due Diligence Audit #2												
EWG present to the MECC the result of its review of the LMRP “Operations Report” (Condition 4(a) of EA T&Cs).												
EWG present to the MECC the result of its review of the “Fish Habitat Assessment Report”, and “Baseline Fish Methyl Mercury Report” (Condition 4b.	Date to be determined											

	Jan	Feb	Mar	Apr	May	June	July	Aug	Sept	Oct	Nov	Dec
of EA T&Cs) by Hatch.												
EWG present to the MECC the result of its review of the draft "Cost Benefit Analysis of Mitigating and Reducing Adam Creek Spill" (Condition 4(c) and (e) of EA T&Cs) by Hatch.												
EWG present to the MECC the "Waste Management Plan" (EA T&C 19).												
EWG present to the MECC "The Noise Protocol Plan" (Condition 18 of EA T&Cs).												
EWG present to the MECC "Environmental Monitoring Plan, Lower Mattagami Development" (EA T&C 14).												TBD
EWG present to the MECC the "Erosion Monitoring Plan" (EA T&C 6).												TBD
EWG present to the MECC the "Evaluation of the Need to Conduct Terrestrial Habitat Restoration Downstream of Kipling" (EA T&C 5).												
Draft of Traditional Ecological Knowledge in relation to the Lower Mattagami River Project.												
EWG present to the MECC the results and recommendations of periodic re-evaluations (Condition 10 of EA T&Cs).												

Construction**Little Long**

- Concrete work is progressing well, with 1,200 m³ of concrete poured in the powerhouse and intake areas this month, bringing the total poured to date to 11,535 m³ of 12,265 m³ total (Figure 1).
- 1,083 m³ of concrete were poured for the scroll case soffit.
- Rebar and form work are advancing on the last pour needed to reach the final generator floor elevation.
- Assembly of the steel frame and anchor layout is under way for the last tailrace pour, which will connect the existing tailrace to the Unit 3 tailrace.
- Following the final adjustments by AFI Hydro, 36 m³ of concrete were poured for all the draft tube gate guides and lintels for Unit 3. Welding at the connection between the lintel and draft tube gate guides was also completed.
- Work on the intake gains repairs continues with epoxy injection completed. Preparations are under way to install an anchor drilling template for the new roller path system on the
- Steel members for the superstructure have arrived on site and ironworkers are sorting the components to facilitate the superstructure erection.

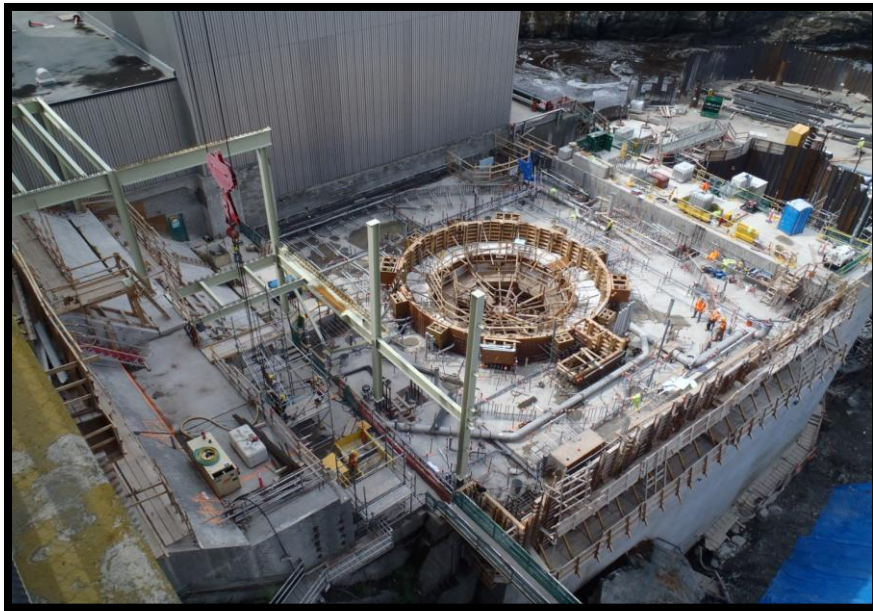


Figure 1: Little Long Scroll Case Soffit Pour Complete and Superstructure Erection Under Way

Harmon

- 1,096 m³ of concrete was poured in the powerhouse and intake areas this month, bringing the total poured to date to 6,852 m³ of 10,794 m³ total (Figure 2).
- 765 m³ of the concrete poured this month was in the scroll case outer walls.
- Six of ten intake shoring towers have been installed; the remaining four will be installed at a later date.
- Rebar and form work for the first intake soffit pour and the next powerhouse pour are advancing.
- Epoxy injection to repair the existing Unit 3 gate guides is complete.
- Removal of the draft tube shoring modules is advancing.

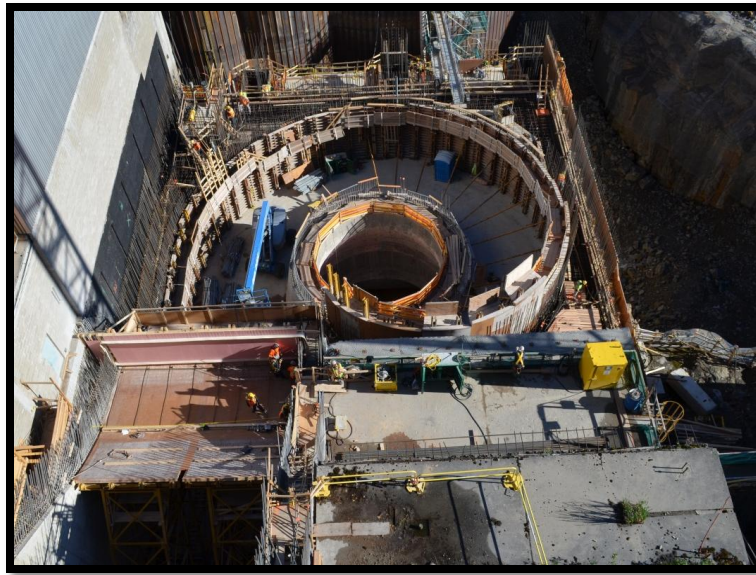


Figure 2: Harmon Site Overview (July 25th 2012)

Kipling

- KAP poured 33 m³ of concrete for a cut-off wall to direct seepage water away from the work footprint.
- Drill and blast operations proceeded in the penstock and bullnose areas.
- 185 m³ of concrete was poured for the mud slab for the Unit 3 intake.
- Work is proceeding in the switchyard, with the concrete for the water / oil separator base poured (31 m³) and form work and rebar being installed for the walls.
- Excavation continues in the powerhouse area (Figure 3).
- Form work erection and rebar installation are under way for the first structural concrete pour in the Unit 3 intake.



Figure 3: Kipling Site Overview (July 25th, 2012)

Smoky Falls

- 7,441 m³ of concrete was poured this month in the service bay, powerhouse, and intake areas, bringing the total poured to date to 44,857 m³ of 135,870 m³ total.
- At the end of the month, twenty concrete pours are in various stages of work (form work started and/or rebar being installed) and progressing in the intake, powerhouse, and East gravity dam areas (Figure 4).
- West gravity dam: blasting of the face of the existing dam to remove embedded timber was successful, and the blasted concrete and timber debris were removed.
- Wet Tailrace Channel: The production blasting went ahead on July 18th (after the end of the fish window's on July 15th). KAP is removing blast rock from the area to construct a marine pad which will be used to facilitate future drill and blast activities. Hauling of muck is under way and drill rigs have been mobilized to start drilling for the next major blast.
- Work in the switchyard (concrete form work, rebar, pours, and backfilling) continues to progress.



Figure 4: Smoky Falls Site Overview (June 19th, 2012)

Monthly Summary – July 2012

SPILLS			
No. of Spills:		13; Spill Reports 249-262 (see Figure 6 for LMRP spills breakdown).	
Classification of Spills:		<u>Project Classification</u> Minor – 12 Moderate – 1 Major – 0 To Water - 0 <u>MOE Classification</u> Non-reportable - 12 Reportable to MOE <ul style="list-style-type: none">- Class C – 1- Class B – 0- Class A – 0	
Reportable Spills			
No.	Quantity /Product Spilled	Spill Site	Reason for being Reportable
1	Propane	Smoky Falls – Permanent Camp	Reported by KAP to MOE Spill Action Centre, but later determined that the spill was captured under EPA O. Reg. 675/98 – Class VIII exemption for petroleum, as the amount released was less than 100 L (4.86 L).
Project Classification (KAP) Minor: ≤ 10L Moderate: Between 10L and 100L Major: ≥100L To Water: Any amount is reportable to the MOE (See Figure 7: KAP Spills Response Flowchart)			MOE Classification Non-reportable: < 100L Reportable to MOE <ul style="list-style-type: none">• Class C - Less Serious• Class B – Serious• Class A – Very Serious
Sediment Pond Exceedance of Effluent Objective			
No. of Exceedance days recorded	Location	Mitigation Measures used	
8 (July 3-4, 16, 23, and 25-28)	Kipling	The increase in turbidity was due to excavations in the Kipling cofferdam area, moving of the water pump in the cofferdam area in order to create the sump and rock washing activities. KAP added Alum as a corrective measure, in addition to the use of a filtration system which filters the water before it is pumped to the sediment pond.	

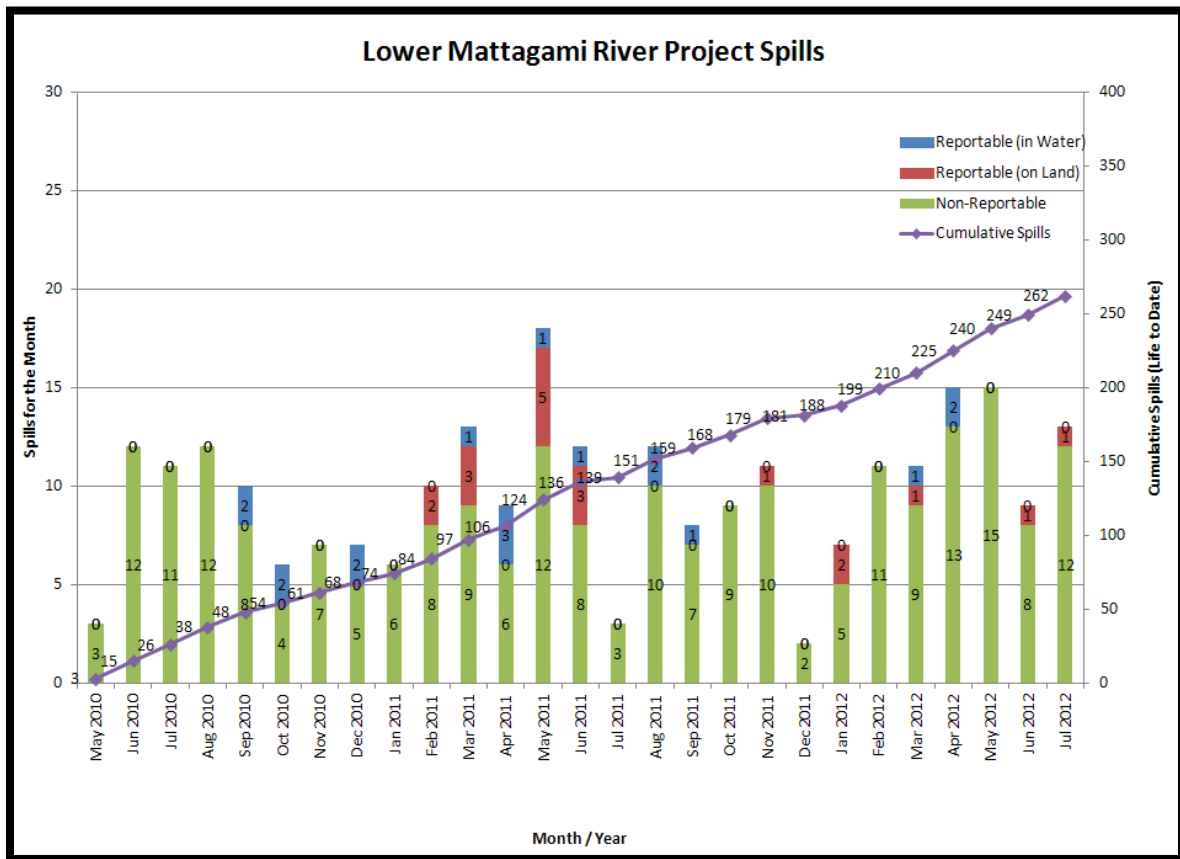


Figure 6: Lower Mattagami River Project spills

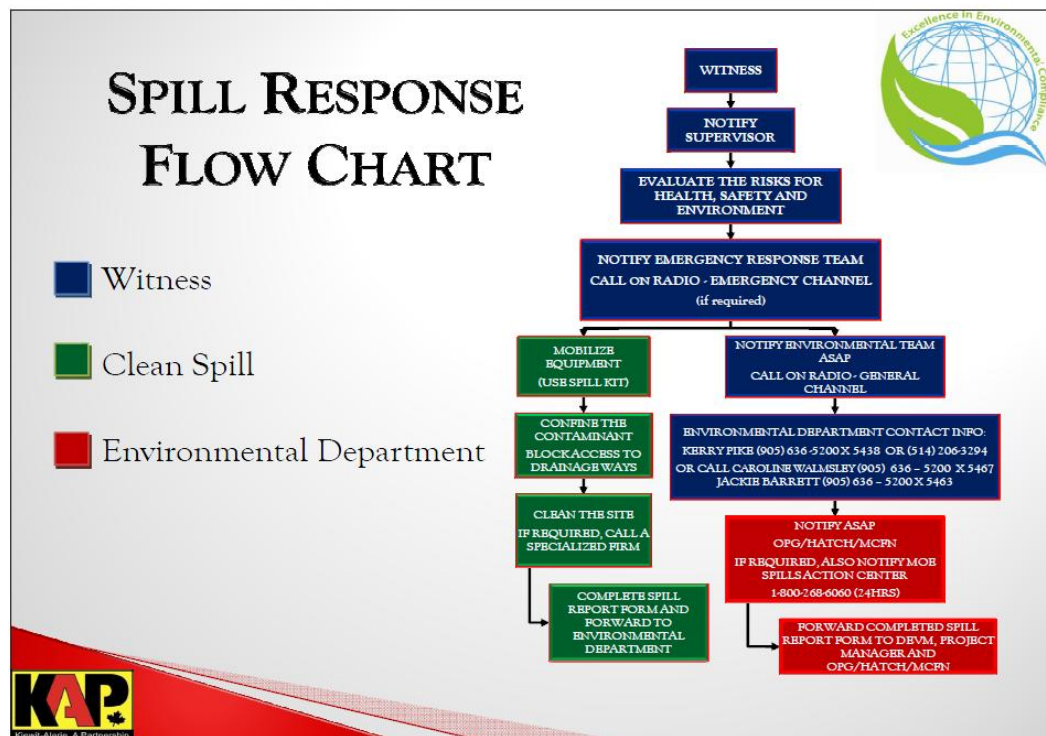


Figure 7: KAP Spills Response Flowchart

PERMIT AND APPROVAL REVIEW			
No. Reviewed:	0	List:	
No. Sent to KAP:	0	List:	
Reports Review			
No. Reviewed for KAP	0	List:	
No. Sent to KAP	0	List:	
No. Reviewed for MECC	5	List:	On-going: <ul style="list-style-type: none"> • Cost Benefit Analysis of Mitigating and Reducing Spill in Adam Creek. • Mercury in Fish Flesh Summary Report. • Fish Habitat Assessment Report • Terrestrial Habitat Restoration Downstream of Kipling GS
No. Review Completed	3	List:	<ul style="list-style-type: none"> • Operation Overview Report. • Waste Management Plan • Noise Control Plan
REQUESTS FOR INFORMATION (RFIs)			
No. Reviewed:	0	List:	n/a
No. Sent to KAP:	0	List:	n/a
See figures 8 to 13 below for site location of the permits that have been or are pending approval.			



Figure 9:
Lower Mattagami River Project
Harmon GS - Permits

Legend

Department of Fisheries & Oceans


 Letter of Advice

Transport Canada

 Navigable Waters Protection Act - Temporary Bridge

 Navigable Waters Protection Act - Harmon Dam


Ministry of Environment


 Amended - Certificate of Approval - Sediment Pond

 Permit To Take Water - Dewatering

Ministry of Natural Resources

 Lakes Rivers Improvement Act - Phase 1A Marine Access Pad

 Lakes River Improvement Act - Phase 1B - Temporary Cofferdam

 Lakes River Improvement Act - Phase 2 Powerhouse Upgrades

 License To Collect Fish for Scientific Purposes



Kiewit - Alarie, A Partnership

Created By: Caroline Walmsley

Datum: Zone 17U

Date: January 19, 2012

Scale: 1: 5,500

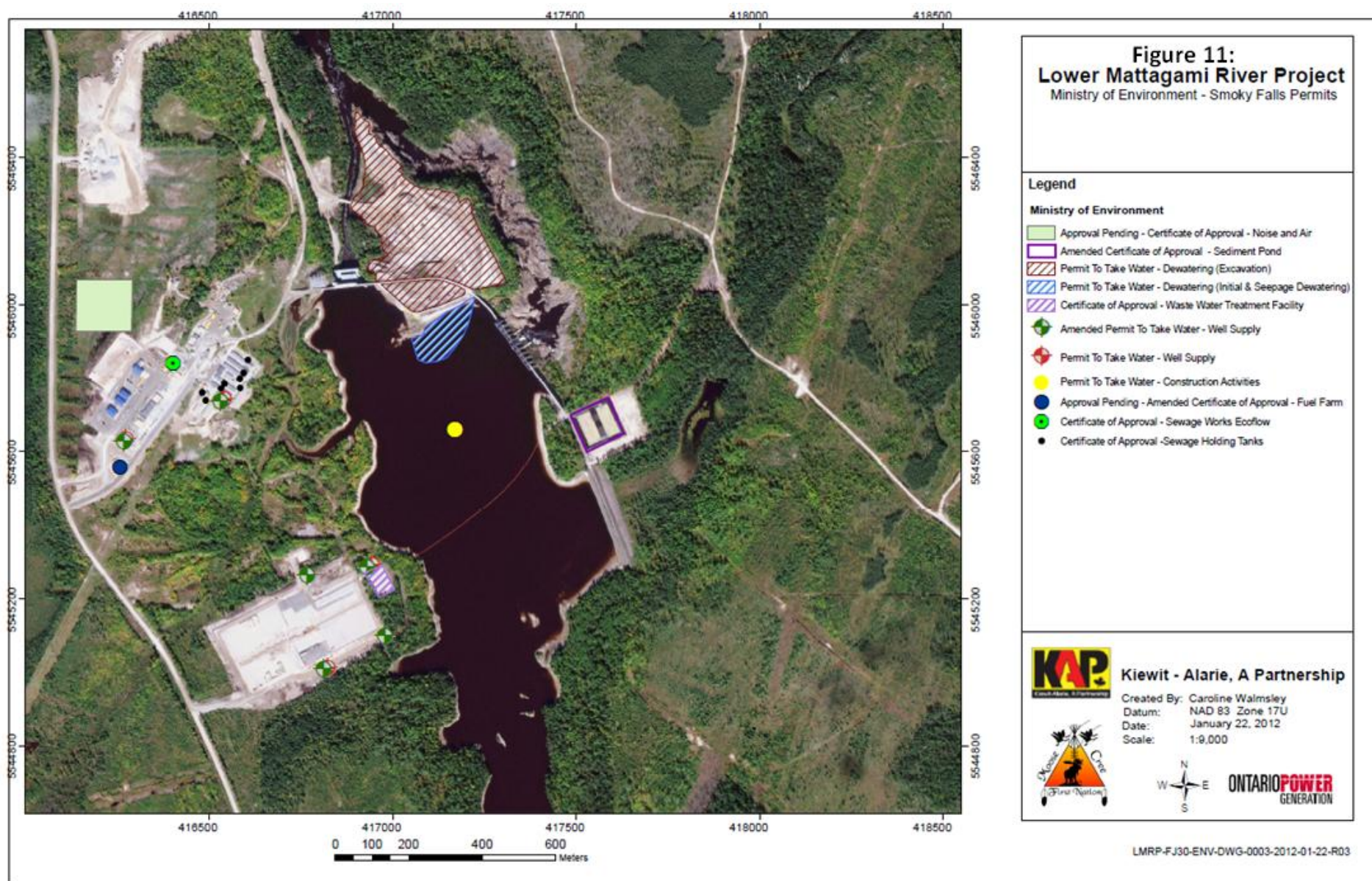


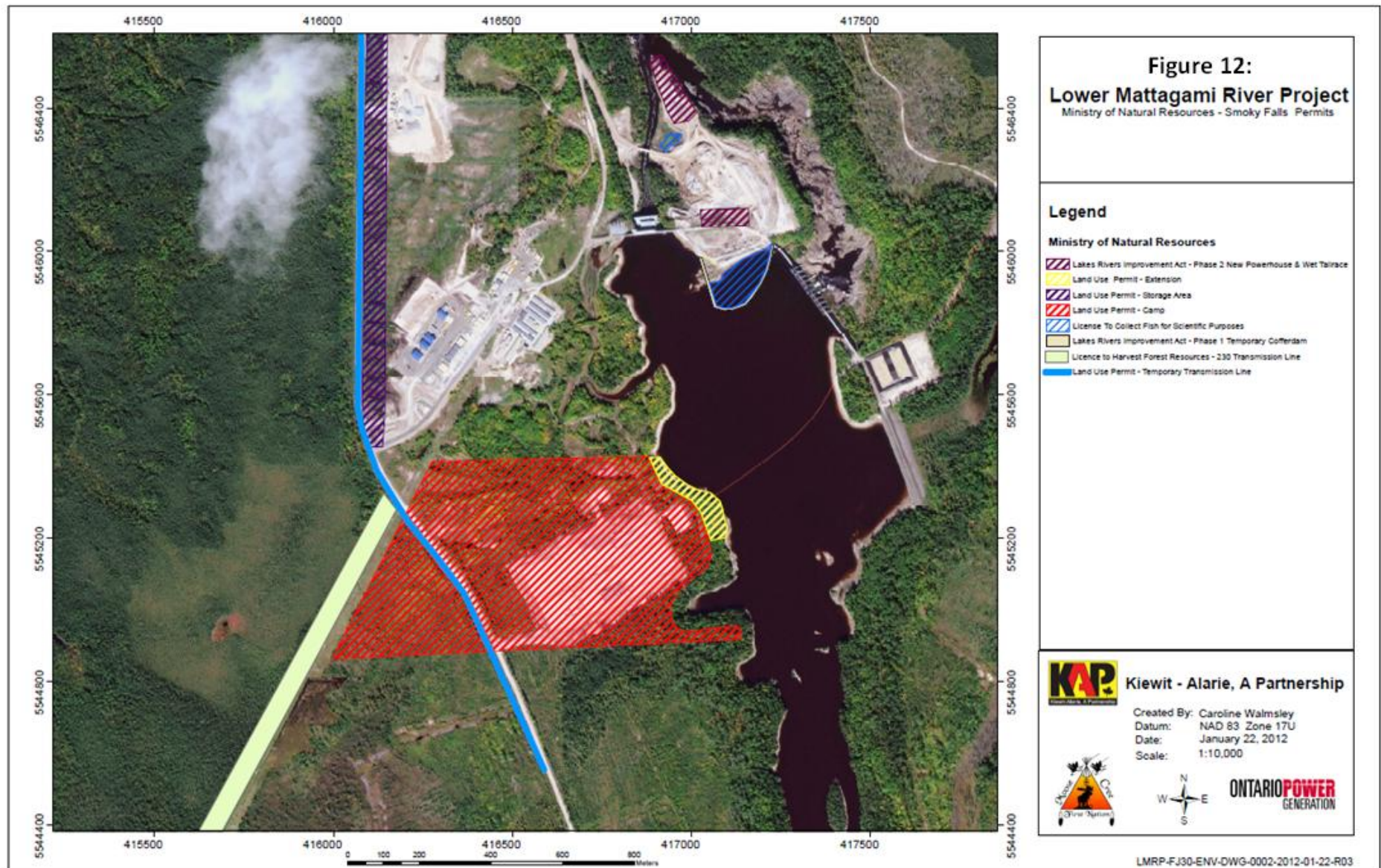
ONTARIO POWER
GENERATION

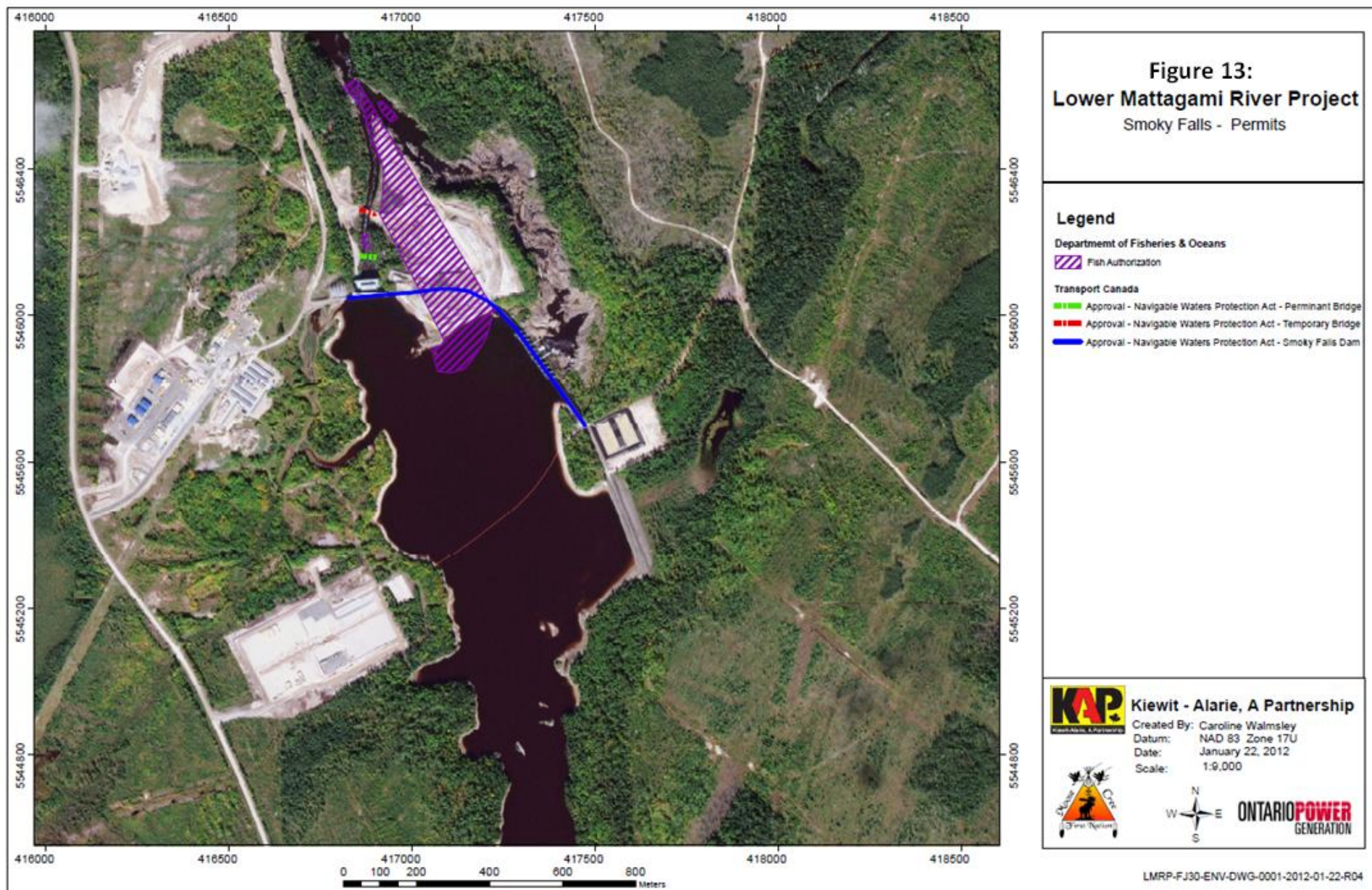
0 100 200 400
Meters

LMRP-FJ28-ENV-DWG-0001-2012-01-19-R04









Issues and Concerns

- The EWG requires a formal memo type document that clearly outlines the MECC interpretations and requirements for the EA Terms and Conditions.

Actions Required: EWG brought up this request during the MECC July 11, 2012 meeting. The EWG will follow-up with the MECC on this action item.

- The EWG became aware of a joint venture (MCFN member/First Choice) contract inappropriately placing construction waste at an unauthorized disposal site. OPG and KAP ensured that the Ministry of the Environment and Ministry of Natural Resources were notified of the unauthorized disposal. As a result, MOE issued an order to the joint venture to rectify and resolve the issue.

Actions Required: MOE and KAP informed, EWG will monitor the situation and ensure MOE's direction on this matter are followed.