



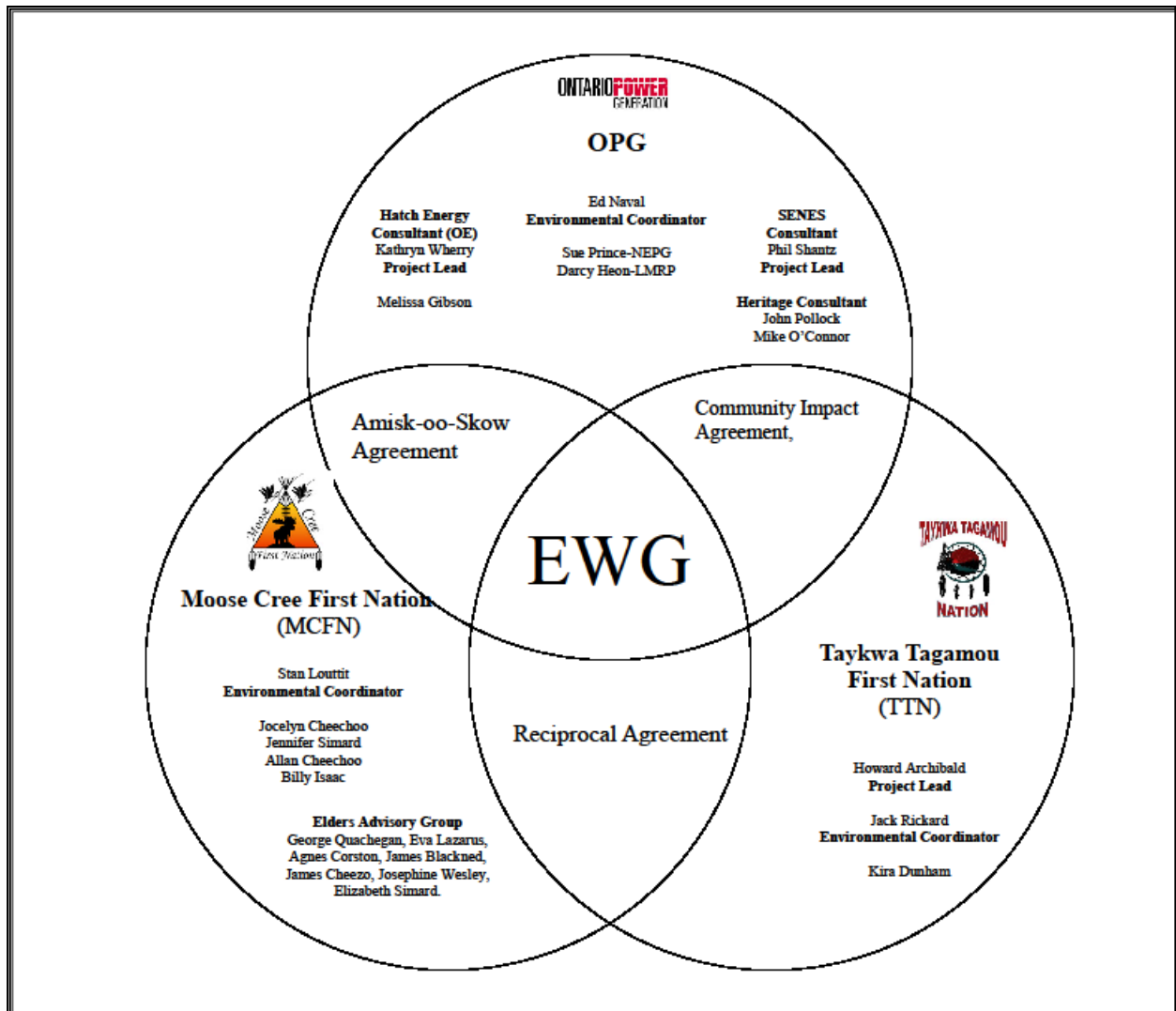
Environmental Working Group

Monthly Report

July 2011

ENVIRONMENTAL WORKING GROUP

Relationship Organizational Chart



ACTIONS COMPLETED

- Weekly Environmental Working Group (EWG) and EWG/Kiewit – Alarie, a Partnership (KAP) meetings.
 - The EWG review its Action Items that include priority permit reviews, and deliverables to the Mattagami Extensions Coordinating Committee (MECC).
 - KAP gives EWG a construction up date every week and discusses any upcoming issues and/or urgent permit reviews.
 - Specific items that were discussed are below.
- Preparation for Environmental Effects Monitoring Workshop – Continuing coordination of logistics for workshop and confirmation of presenters. Revision of the EEM Workshop Framework and Plan to update and reflect EWG comments and most recent information.
- Ongoing discussions and review of Smoky Falls Fish Habitat Compensation Plan Revision with KAP regarding KAP's proposed changes to the current fish habitat compensation plan. Ongoing discussions regarding the construction methods proposed to be used for the wet tailrace excavation activities at Smoky Falls tailrace.
- Operations Report – presentation to the MECC.
- Ongoing review and compilation of Traditional Ecological Knowledge (TEK) for the Lower Mattagami River Project.
- Identification of "Gaps" for the Cost Benefit Analysis and Operations Reports in meeting EA Terms and Condition #4.
- Review of Project Environmental Reports required for the month of August 2011.
- Further discussion of Project Environmental Report from month of May 2011, June 2011, and July 2011 and Term and Condition #4.

ACTIONS TO BE COMPLETED FOR 2011

	Jan	Feb	Mar	Apr	May	June	July	Aug	Sept	Oct	Nov	Dec
Draft of Traditional Ecological Knowledge in relation to the Lower Mattagami River Project.												
Environmental Effects Monitoring Workshop												
Environmental Assessment (EA) Variances – EWG Review and Submission to MECC												
EA Terms and Conditions Environmental Compliance Plan – EWG Review and Submission to MECC.												
EWG Terms of Reference (ToR) – Submission to MECC												
EWG Work Plan – Submission to MECC												
EWG Environmental Due Diligence Audit #1												
Environmental Audit – Accreditation Training												

	Jan	Feb	Mar	Apr	May	June	July	Aug	Sept	Oct	Nov	Dec
EWG presentation to the MECC the LMRP "Operations Report" (fulfills Condition 4(a) of EA T&Cs).												
EWG present to the MECC "Fish Habitat Assessment Report", and "Baseline Fish Methyl Mercury Report" (fulfills Condition 4b. of EA T&Cs).												
EWG present to the MECC "Cost Benefit Analysis of Mitigating and Reducing Adam Creek Spill" (fulfills Condition 4(c) and (e) of EA T&Cs).												
EWG present to the MECC the methods and means of ensuring that restrictions on hunting and fishing (fulfills Condition 5(a) and (c) of EA T&Cs).												
EWG present to the MECC "Terrestrial Habitat Restoration Downstream of Kipling GS" (fulfills Condition 4b. of EA T&Cs).												
EWG present to the MECC a Public Information Program to communicate the results of fish methyl mercury baseline reports (fulfills Condition 7(a) and (b) of EA T&Cs).												
EWG present to the MECC the cumulative effects data developed during the Federal EA process (fulfills Condition 8(a) and (b) of EA T&Cs).												
EWG present to the MECC the results and recommendations of periodic re-evaluations (fulfills Condition 10 of EA T&Cs).												
EWG present to the MECC "Hydroelectric Generating Facilities Decommissioning Plan" (fulfills Condition 11(a) of EA T&Cs).												TBD in 2012
EWG present to the MECC "The Noise Protocol Plan" (fulfills Condition 18 of EA T&Cs).												TBD in 2012

Construction**General**

- Permanent Camp – The Phase 4 dormitory is complete. As of the end of July, 636 of approximately 800 rooms were available on site at the permanent camp.
- Mould had been discovered in some of the unoccupied dorms. Testing has confirmed that it is not on the list of hazardous moulds as identified by Health Canada. The cleaning campaign was completed as of July 19th.
- Batch Plant – Electrical and mechanical issues with the ice plant were resolved and ice manufacturing started in July. The installation of the concrete reclaimer and the start-up for the south batch plant are both ongoing.
- The megadome is being erected at the Smoky Falls site. As of month-end, canvas installation has started.



Figure 1: Megadome - Installing the first tarp

Smoky Falls

- Excavation and preparatory work was completed at the beginning of July, allowing a number of concrete pours for the intake and service bay areas to occur.
- Stabilization of the rock face on the east side continues.
- Unstable rock at the top of the Unit #3 bullnose (Figure 2) moved creating an unacceptable risk of an uncontrolled rock slide. Excavation and removal of blast material from the area of the powerhouse and bullnose for Unit #3 was stopped and a buttress of shot rock was formed around the bullnose to prevent further slippage. A stability analysis was undertaken recommending the removal of the unstable rock.
- KAP has set up a task force team to review the impact on the Smoky Falls schedule and the best approach for re-sequencing the concrete lifts.
- Tower crane #1 has been erected and is operational. The erection of tower crane #4 is underway.



Figure 2: Smoky Falls - Access ramp in front of the Bullnose

Little Long

- The sectional gates have been installed in the G3 intake.
- The bullnose excavation is complete and the cleaning of the powerhouse floor and mucking of

rock out of the excavation area was complete as of July 19th.

- The cleaning of rock for the powerhouse floor concrete mud slab is near completion.
- Concrete work is progressing with various pours complete and others are being prepared for with formwork and rebar installation under way (Figure 3).



Figure 3: Little Long concrete pour

Harmon

- Cofferdam cell #2 is progressing, the granular backfill is complete and the template has been removed. Sheet piles for the arc cell are in place and the tremie concrete seal at the bottom of the entire cofferdam is complete (Figure 4).
- Divers cleaned the G3 sill and all G3 head gate stop logs were installed on July 15th.
- Minor sand fill seepage was detected on the downstream side in Cell #1 on July 19th. A 10inch opening was discovered by divers and sand bags and tote bags were placed on the away from the toe of the downstream sheet piles to form a barrier.
- The diesel pump is being tested in the future dewatering area between the cofferdam seal and the existing G3 and G4 structures. Water is being discharged into the sediment pond.



Figure 4: Kipling overview



Figure 5: Working on the excavation
for location of Cell 1 and 2

Kipling

- The tremie concrete pour for the cofferdam abutment mud slab was completed and all anchor holes have been drilled.
- Cofferdam Cell #1 template assembly is ongoing.
- The long stick excavator on the barge is dredging in the areas where Cells #1 and #2 will be located. The excavated foot print will need to be inspected by divers prior to cofferdam cell installation (Figure 5).
- Construction of the sediment pond is nearing completion, pending final stamped drawings.

Monthly Summary – July 2011

SPILLS			
No. of Spills:		3; Spill Reports 137-139 (see Figure 6 for LMRP spills breakdown).	
Classification of Spills:		<u>Project Classification</u> Minor – 2 Moderate – 1 Major – 0 To Water - 0 <u>MOE Classification</u> Non-reportable - 3 Reportable to MOE <ul style="list-style-type: none">- Class C – 0- Class B – 0- Class A – 0	
<u>Reportable Spills</u>			
No.	Quantity /Product Spilled	Spill Site	Reason for being Reportable
0	n/a	n/a	n/a
Project Classification (KAP) Minor: ≤ 10L Moderate: Between 10L and 100L Major: ≥100L To Water: Any amount is reportable to the MOE (See Figure 7: KAP Spills Response Flowchart)			MOE Classification Non-reportable: < 100L Reportable to MOE <ul style="list-style-type: none">• Class C - Less Serious• Class B – Serious Class A – Very Serious

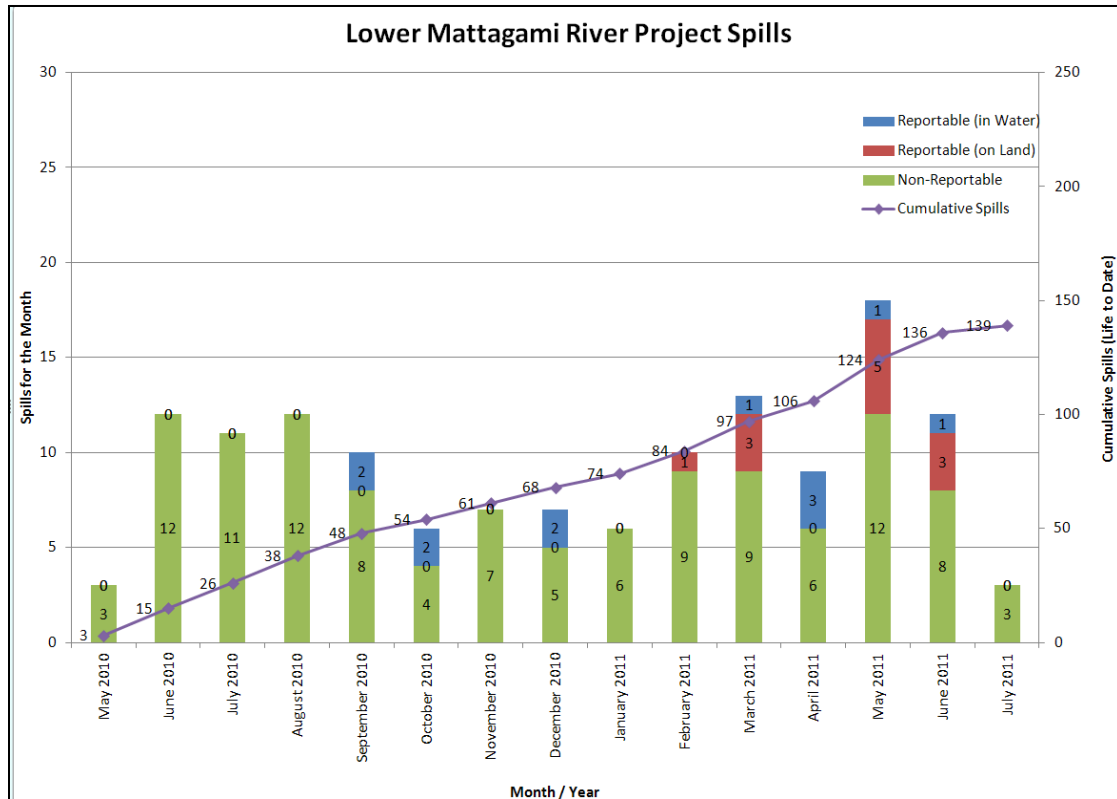


Figure 6: Lower Mattagami River Project spills

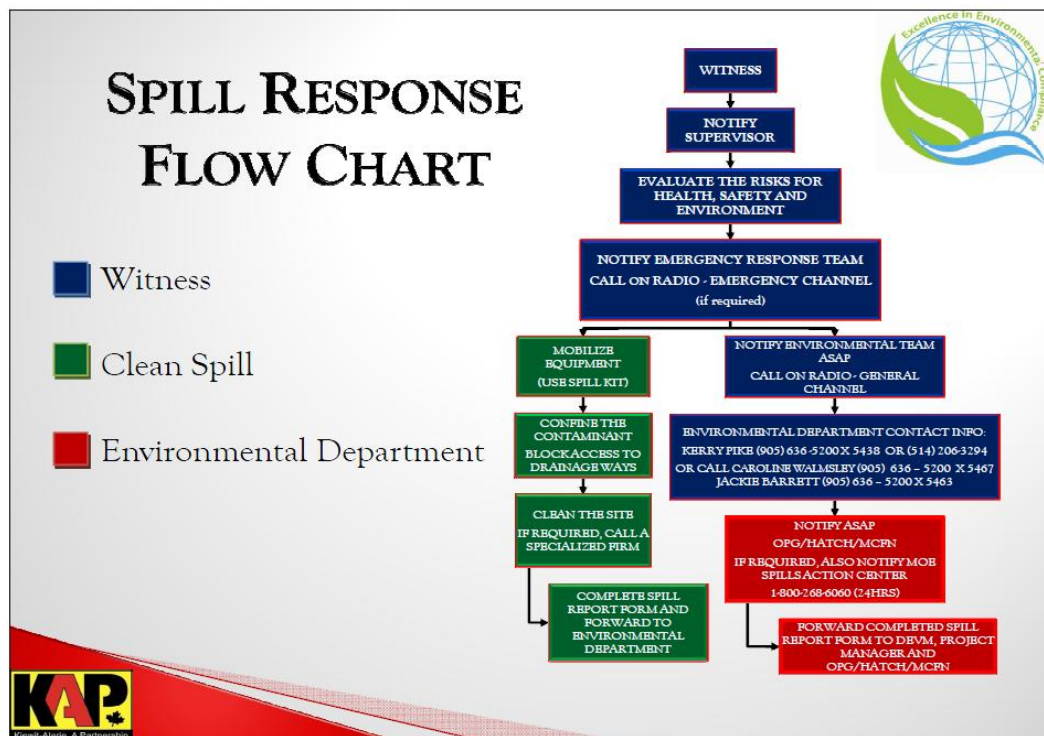


Figure 7: KAP Spills Response Flowchart

PERMIT AND APPROVAL REVIEW			
No. Reviewed:	3	List:	<ul style="list-style-type: none"> • Smoky Falls - Concrete Batch Plant • Kipling Generating Station (GS) - Plans and Specifications Approval • Work Permit Application for Work on Permanent Transmission Line
No. Sent to KAP:	2	List:	<ul style="list-style-type: none"> • Smoky Falls - Fish Habitat Compensation • Harmon GS Extension – Ministry of Natural Resources (MNR) Lakes and Rivers Improvement Act (LRIA) Plans and Specifications Approval • Smoky Falls Powerhouse LRIA Approval
REQUESTS FOR INFORMATION (RFIs)			
No. Reviewed:	1	List:	Smoky Falls-Proposed Permanent Bridge Approach
No. Sent to KAP:	0	List:	N/A
See figures 8 to 11 below for site location of the permits that have been or are pending approval.			

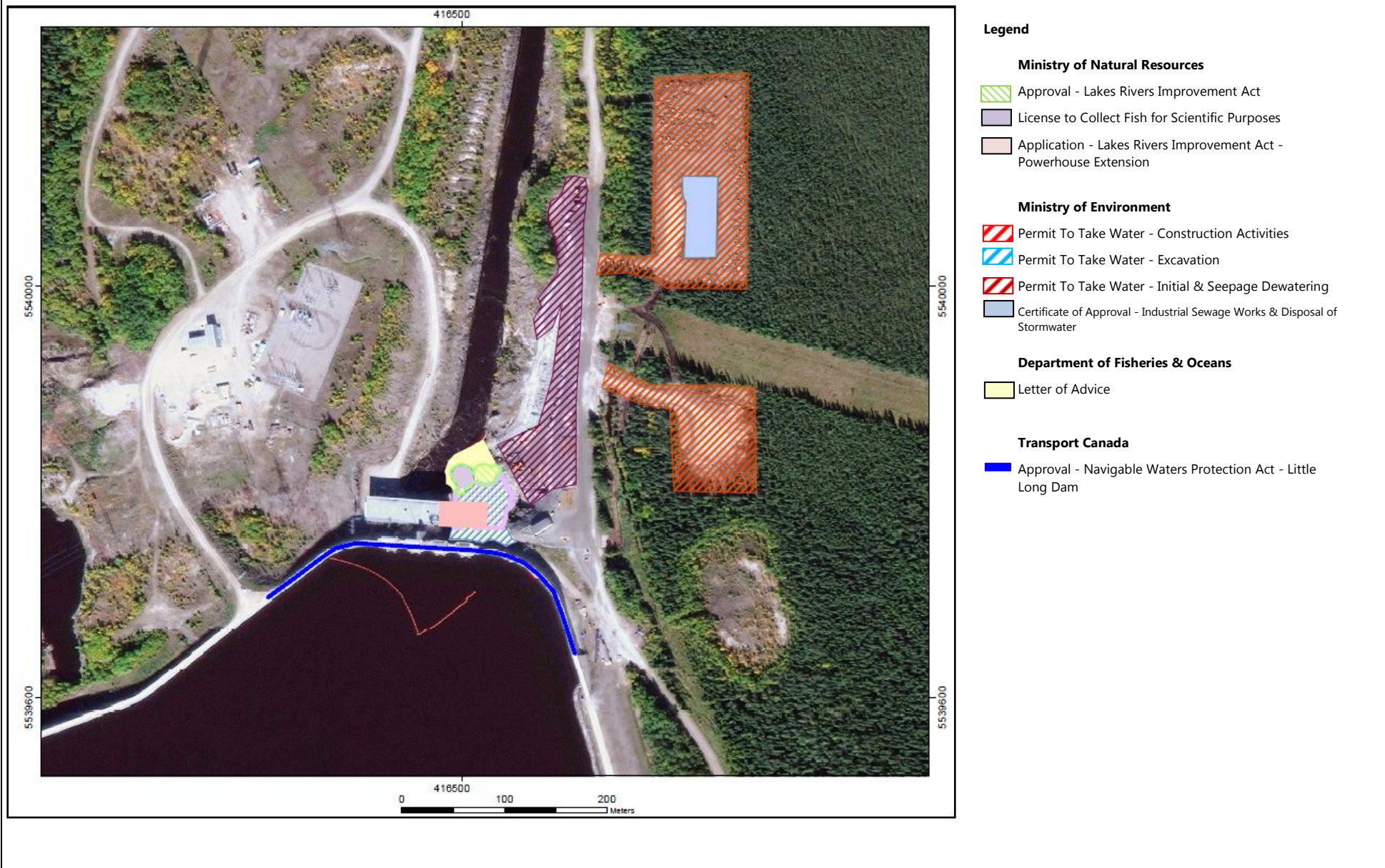
Figure 8: Little Long GS - Permits

Figure 9: Smokey Falls GS - Permits

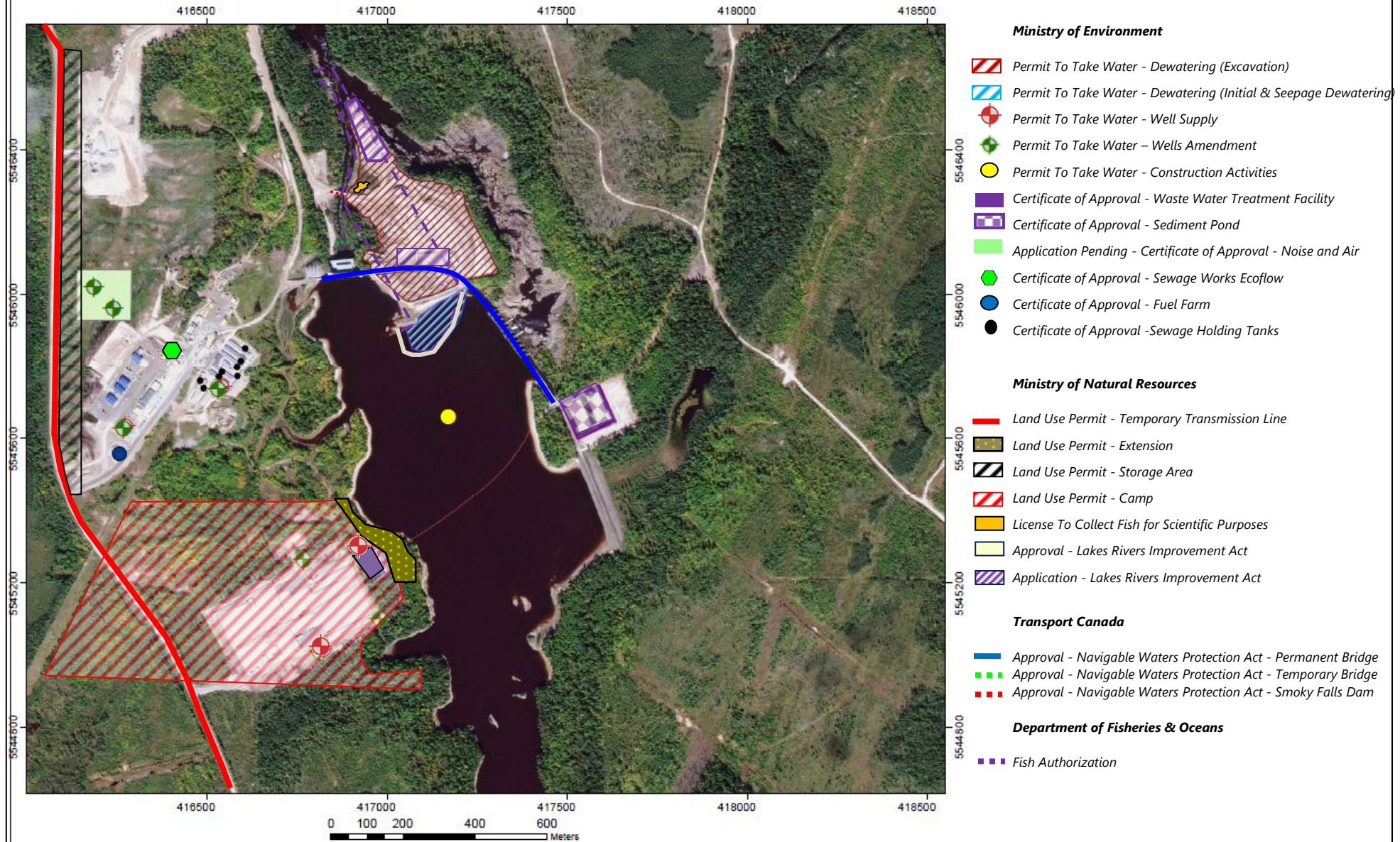
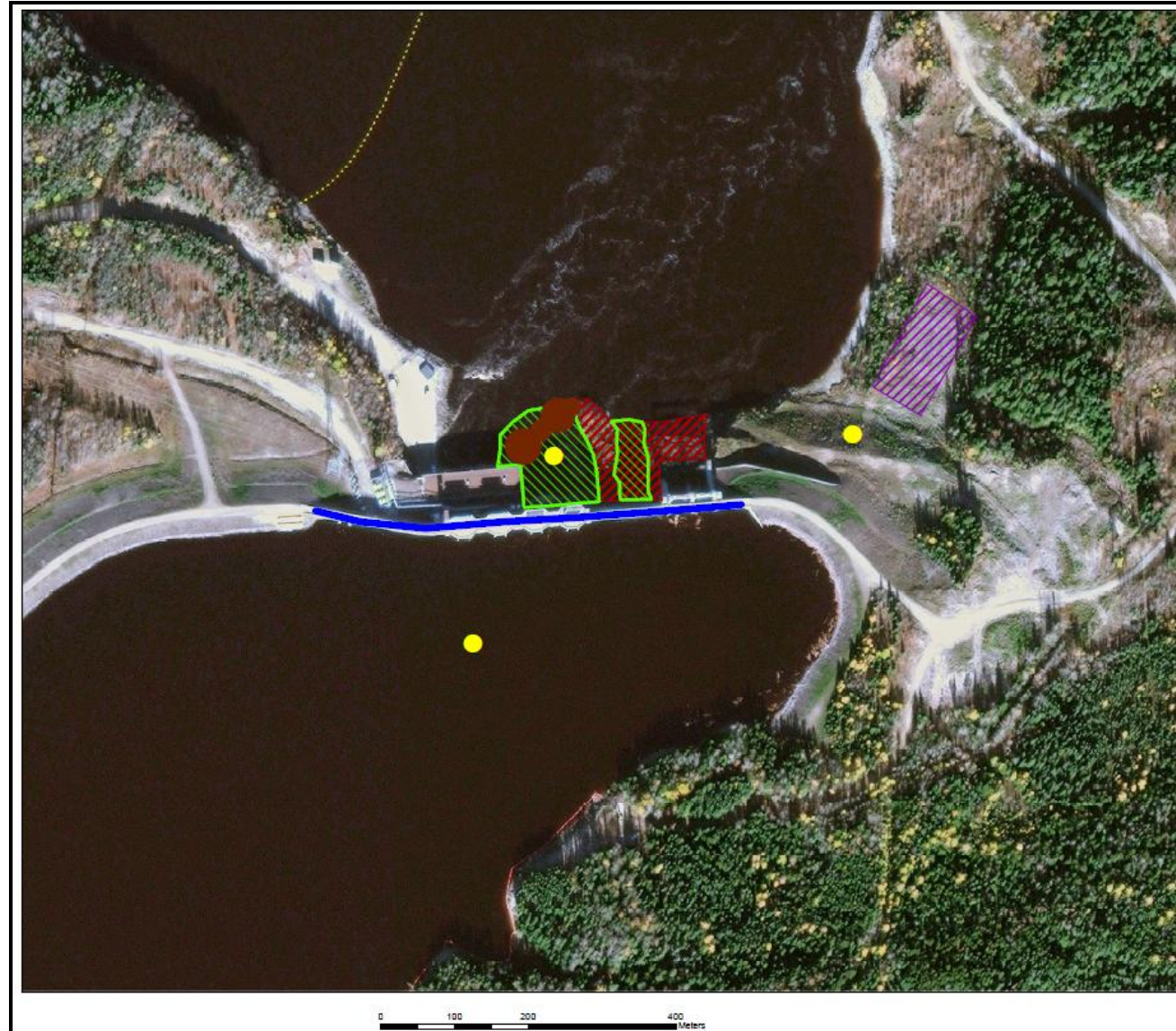




Figure 11: Kipling GS - Permits




Legend



Ministry of Natural Resources

-  Approval Phase 1A - Marine Access Pad
-  Application Pending - Lakes Rivers Improvement Act - Phase II

Department of Fisheries & Oceans

-  Letter of Advice

Ministry of Environmental

-  Application Pending for Certificate of Approval - Sediment Pond
-  Permit To Take Water - Dewatering

Transport Canada


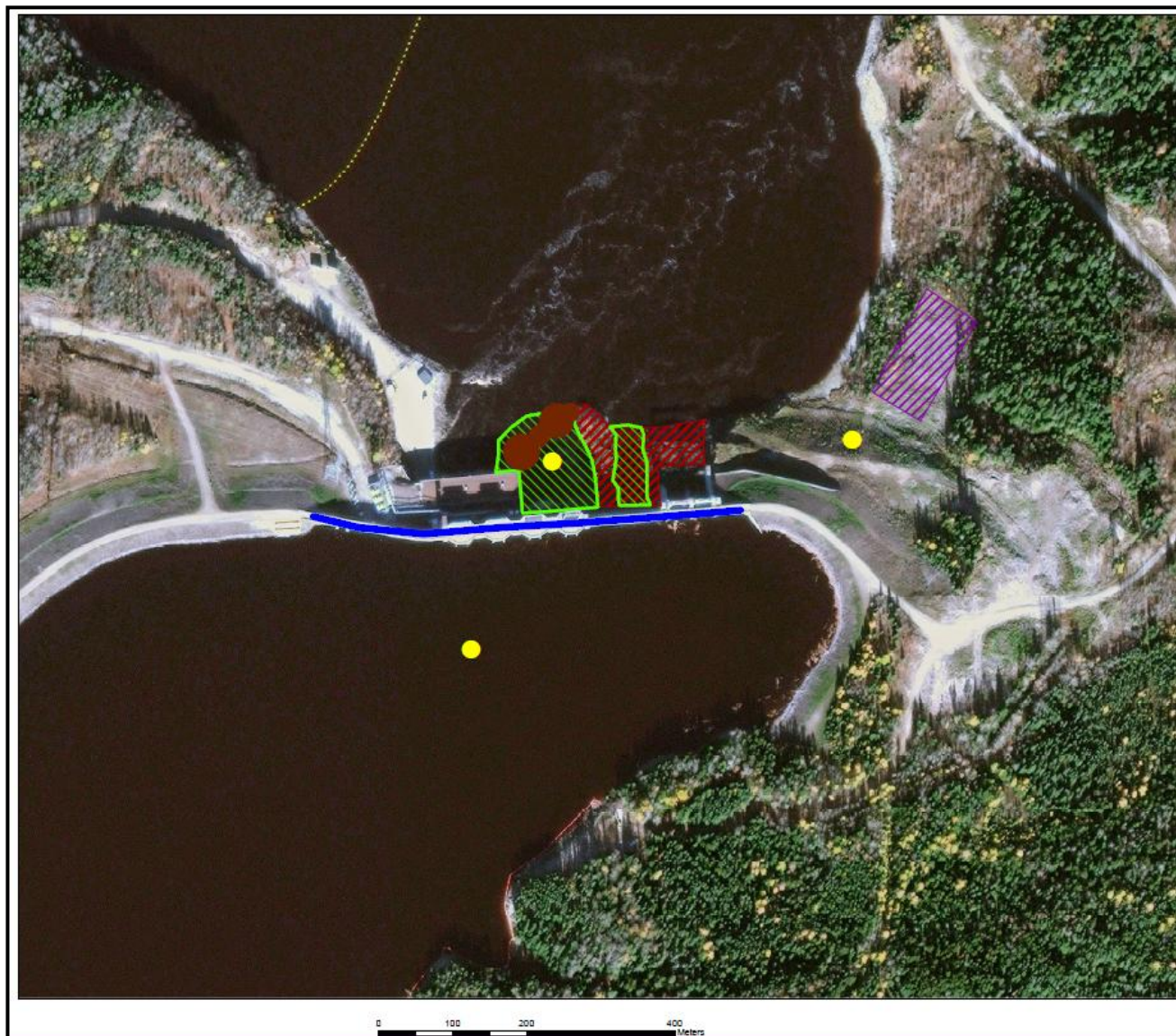



-  Approval - Navigable Waters Protection Act - Kipling Dam

Figure 11: Kipling GS - Permits



**Legend****Ministry of Natural Resources**

-  Approval Phase 1A - Marine Access Pad
-  Application Pending - Lakes Rivers Improvement Act - Phase II


Department of Fisheries & Oceans

-  Letter of Advice

Ministry of Environmental

-  Application Pending for Certificate of Approval - Sediment Pond
-  Permit To Take Water - Dewatering

Transport Canada

-  Approval - Navigable Waters Protection Act - Kipling Dam

Issues and Concerns
None for the month of July.