

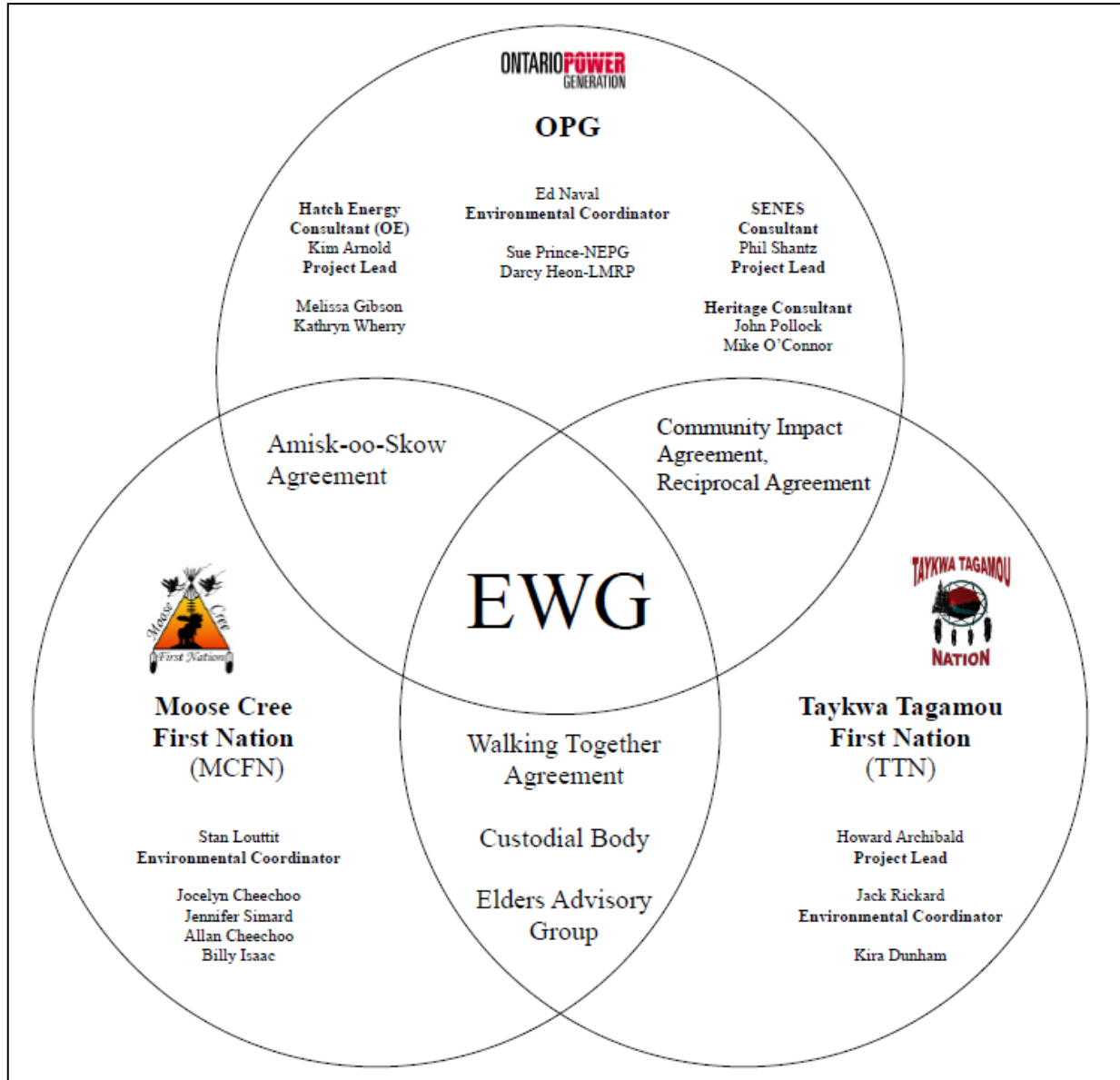
Environmental Working Group

Monthly Report

January 2011

ENVIRONMENTAL WORKING GROUP

Relationship Organizational Chart



ACTIONS COMPLETED

- Weekly Environmental Working Group (EWG) and EWG/Kiewit – Alarie, a Partnership (KAP) meetings.
 - The EWG review its Action Items that include priority permit reviews, and deliverables to the Mattagami Extensions Coordinating Committee (MECC).
 - KAP gives EWG a construction up date every week and discusses any upcoming issues and/or urgent permit reviews.
- Ongoing updates to the Provincial Environmental Assessment (EA) Terms and Conditions (T&C) Compliance Plan.
 - The EWG plan to present the EA Terms and Conditions Compliance Plan to the MECC in February.
- Finalizing and submission of the EA Variances to the MECC.
- Ongoing updates and preparation for the Preliminary Environmental Effects Monitoring Workshop
- Ongoing updates to the Preliminary Environmental Monitoring Plan
- Ongoing review and compiling of Traditional Ecological Knowledge for the Lower Mattagami River Project
- Finalizing the EWG Terms of Reference.
- Finalizing the 2011 Work Plan for EWG.

UPCOMING ACTION TO BE COMPLETED

	Jan	Feb	Mar	Apr	May	June	July	Aug	Sept	Oct	Nov	Dec
Draft of Traditional Ecological Knowledge in relation to the Lower Mattagami River Project.												
Environmental Effects Monitoring Workshop												
EA Variances – EWG Review and Submission to MECC												
EA Terms and Conditions Environmental Compliance Plan – EWG Review and Submission to MECC.												
EWG T of R – Submission to MECC												
EWG Work Plan – Submission to MECC												
EWG Environmental Audit #1												
Environmental Audit – Accreditation Training												
EWG presentation to the MECC the LMRP "Operations Report" (fulfills Condition 4(a) of EA T&Cs).												

	Jan	Feb	Mar	Apr	May	June	July	Aug	Sept	Oct	Nov	Dec
EWG present to the MECC "Fish Habitat Assessment Report", and "Baseline Fish Methyl Mercury Report" (fulfills Condition 4b. of EA T&Cs).												
EWG present to the MECC "Cost Benefit Analysis of Mitigating and Reducing Adam Creek Spill" (fulfills Condition 4(c) and (e) of EA T&Cs).												
EWG present to the MECC the methods and means of ensuring that restrictions on hunting and fishing (fulfills Condition 5(a) and (c) of EA T&Cs).												
EWG present to the MECC "Terrestrial Habitat Restoration Downstream of Kipling GS" (fulfills Condition 4b. of EA T&Cs).												
EWG present to the MECC a Public Information Program to communicate the results of fish methyl mercury baseline reports (fulfills Condition 7(a) and (b) of EA T&Cs).												
EWG present to the MECC the cumulative effects data developed during the Federal EA process (fulfills Condition 8(a) and (b) of EA T&Cs).												
EWG present to the MECC the results and recommendations of periodic re-evaluations (fulfills Condition 10 of EA T&Cs).												
EWG present to the MECC "Hydroelectric Generating Facilities Decommissioning Plan" (fulfills Condition 11(a) of EA T&Cs).												
EWG present to the MECC "The Noise Protocol Plan" (fulfills Condition 18 of EA T&Cs).												

Construction Update

General

- Permanent Camp Phase 1 – Morris Modular continued work within dorm rooms, arctic hallway and kitchen. Efforts continue to install service piping connections to the modular units, fire safety system and roof joint sealing.
- Permanent Camp Phase 2 – Units continue to arrive at site for the next phase of the permanent camp.
- Extension of the distribution lines to the batch plant and along the Smoky Falls Road was completed.
- Energization of the sub-station (with T2 transformer) occurred on January 18th. Manufacturer's warranty inspection on T1 transformer was completed and an inspection report will be issued.
- Road topping resumed on Little Long Road and continued through January.

Smoky Falls

- Smoky Falls Island excavation continues of various elevations within the powerhouse, tailrace, and intake footprint. Overburden removal continues in concentrated area to the right side of the powerhouse footprint where rock was originally anticipated.
- Draw down of the water table continues with two wells on Smoky Falls Island. Three pumping wells have been decommissioned.
- Smoky Falls cut-off wall sub-contractor completed the cut-off wall on the spur dyke and has nearly complete construction of the cut-off wall for the upstream cofferdam (Figure 1).



Figure 1: Smokey Falls Cut-off at the Cofferdam

Little Long

- Cellular cofferdam upstream grout curtain drilling has begun and grouting of primary and secondary holes of the cells continues (Figure 2).
- Post tension anchor holes on Cell #3 are complete and have passed water tests.
- Redesign of the final shore tie-in continues.



Figure 2: Little Long Cofferdam

Harmon

- Harmon marine pad is complete and a sub-contractor has completed the drilling of the tower crane post tension anchor holes and geotechnical drilling boreholes for excavation design.



Figure 3: Dumping blast rock at Harmon

Kipling

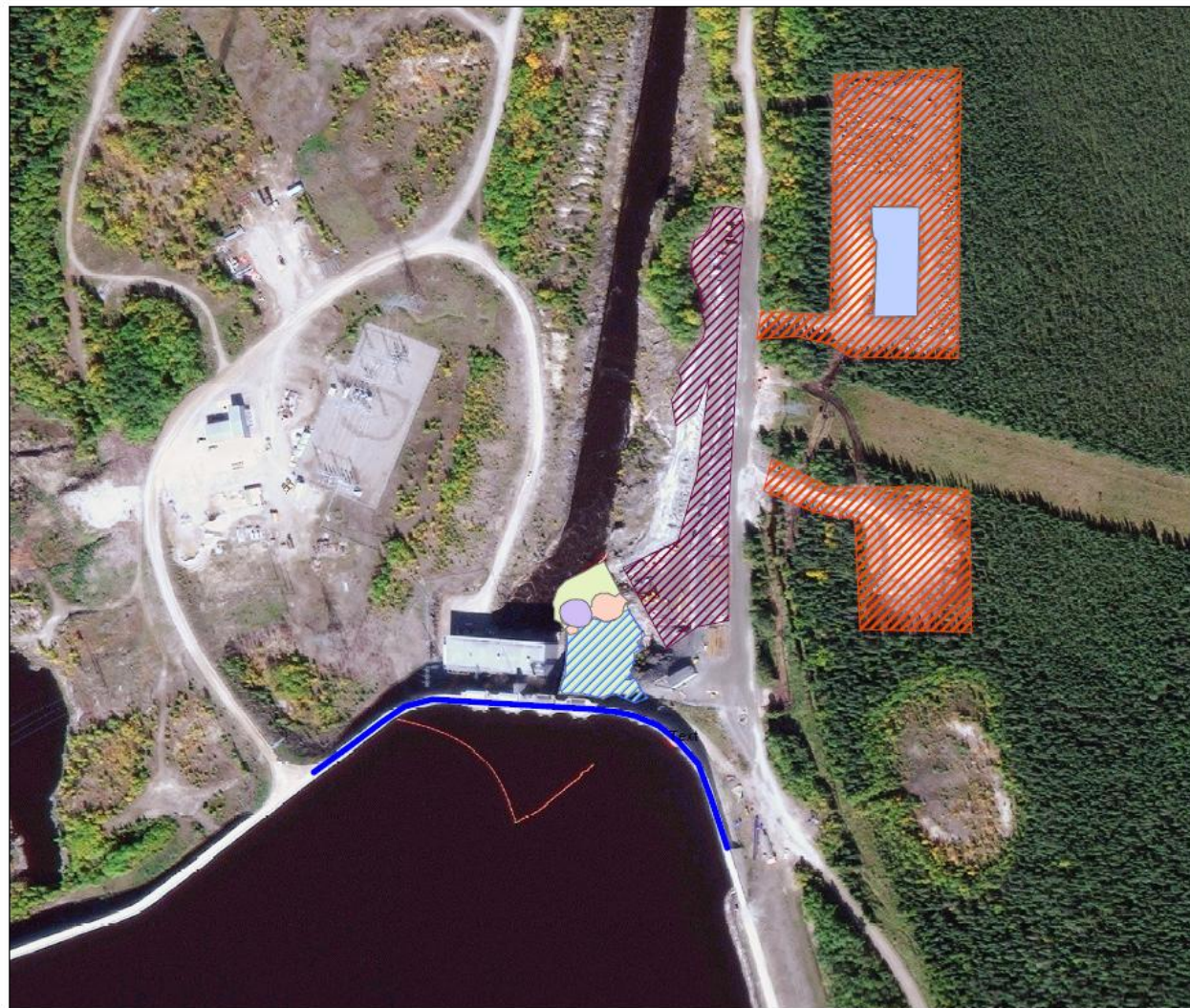
- Excavation ongoing on the right abutment approach leading up to the sluiceway. Marine fill for crane pad area is complete (Figure 4).





Figure 4: Excavation at Kipling





Monthly Summary – January 2011

Date:	February 14, 2011		
SPILLS			
No. of Spills:	6; Spill Reports 69-74		
Classification of Spills:	<u>Project Classification</u> Minor – 5 Moderate – 1 Major – 0 To Water - 0 <u>Ministry of the Environment (MOE) Classification</u> Non-reportable - 6 Reportable to MOE - Class C – 0 - Class B – 0 - Class A – 0		
Project Classification (KAP) Minor: ≤ 10L Moderate: Between 10L and 100L Major: ≥100L To Water: Any amount is reportable to the MOE		MOE Classification Non-reportable: < 100L Reportable to MOE • Class C - Less Serious • Class B – Serious • Class A – Very Serious	
REQUESTS FOR INFORMATION (RFIs)			
No. Reviewed:	0	List:	
No. Sent to KAP:	1	List:	n/a
PERMIT AND APPROVAL REVIEW			
No. Reviewed:	6	List:	<ul style="list-style-type: none">• Revised Heritage and Archaeological Plan• Smoky Falls Island Contaminated Soil Remediation Report• Harmon Temporary Cofferdam MNR Application• Temporary Transmission Line - Rev 2• Smoky Falls C of A Application - Sewage Holding Tanks• Little Long License to Collect Fish – Cofferdam
No. Sent to KAP:	4	List:	<ul style="list-style-type: none">• Revised Heritage and Archaeological Plan• Smoky Falls Island Contaminated Soil Remediation Report• Harmon Temporary Cofferdam MNR Application• Temporary Transmission Line - Rev 2
See figures 1 to 4 below for site location of the permits that have been or are pending approval.			

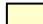
Figure 1: Little Long GS - Permits**Legend****Ministry of Natural Resources**

-  Approval - Lakes Rivers Improvement Act
-  License to Collect Fish for Scientific Purposes

Ministry of Environment

-  Permit To Take Water - Construction Activities
-  Permit To Take Water - Excavation
-  Permit To Take Water - Initial & Seepage Dewatering
-  Certificate of Approval - Industrial Sewage Works & Disposal of Stormwater

Department of Fisheries & Oceans

-  Letter of Advice

Transport Canada


-  Approval - Navigable Waters Protection Act - Little Long Dam

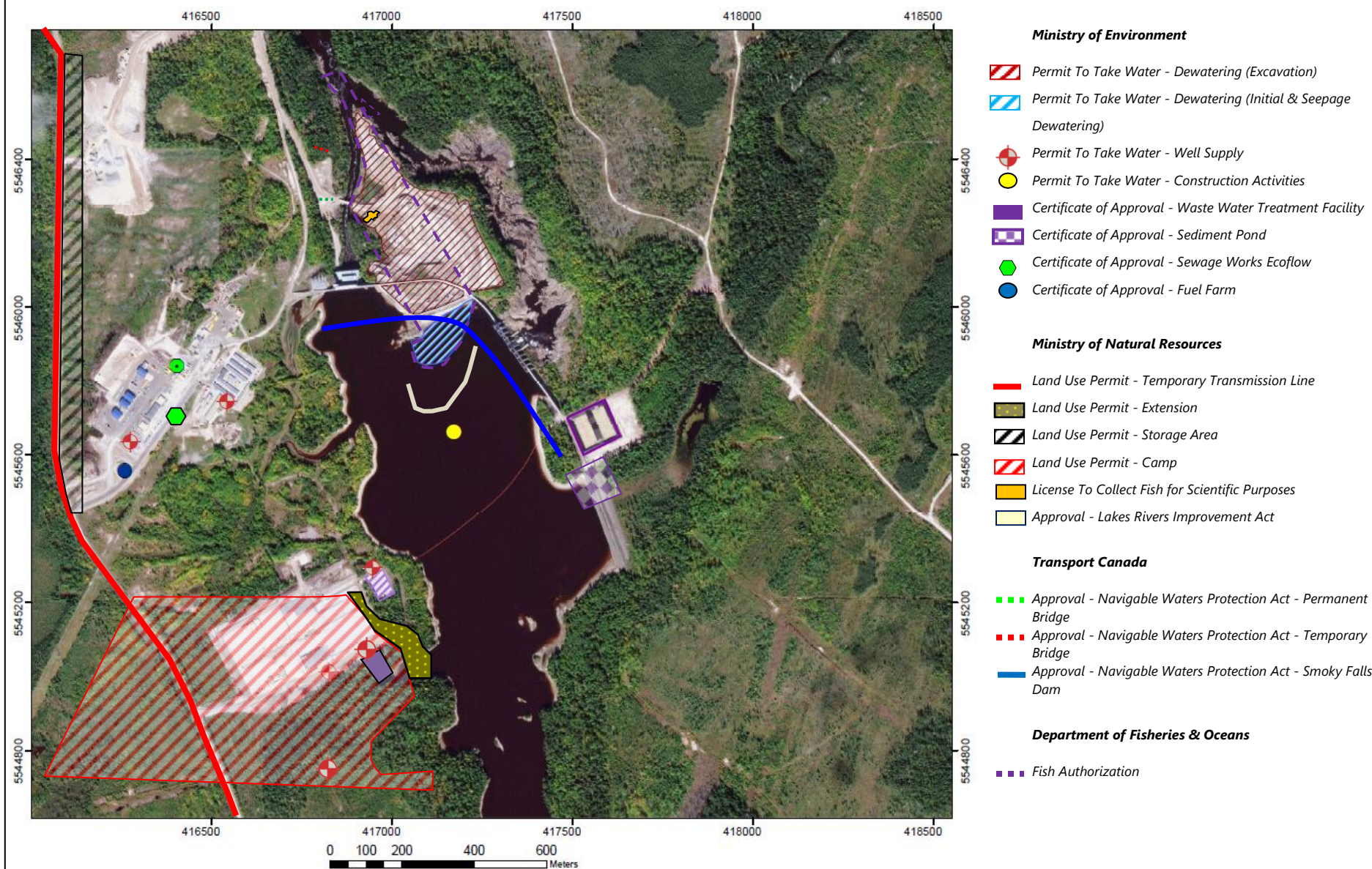

Figure 2: Smokey Falls GS - Permits

Figure 3: Harmon GS - Permits





Legend

Ministry of Natural Resources


 Approval - Lakes Rivers Improvement Act

Ministry of Environment


 Application Pending - Certificate of Approval - Sediment Pond

 Permit To Take Water - Dewatering

Department of Fisheries & Oceans

 Letter of Advice

Transport Canada

 Navigable Waters Protection Act


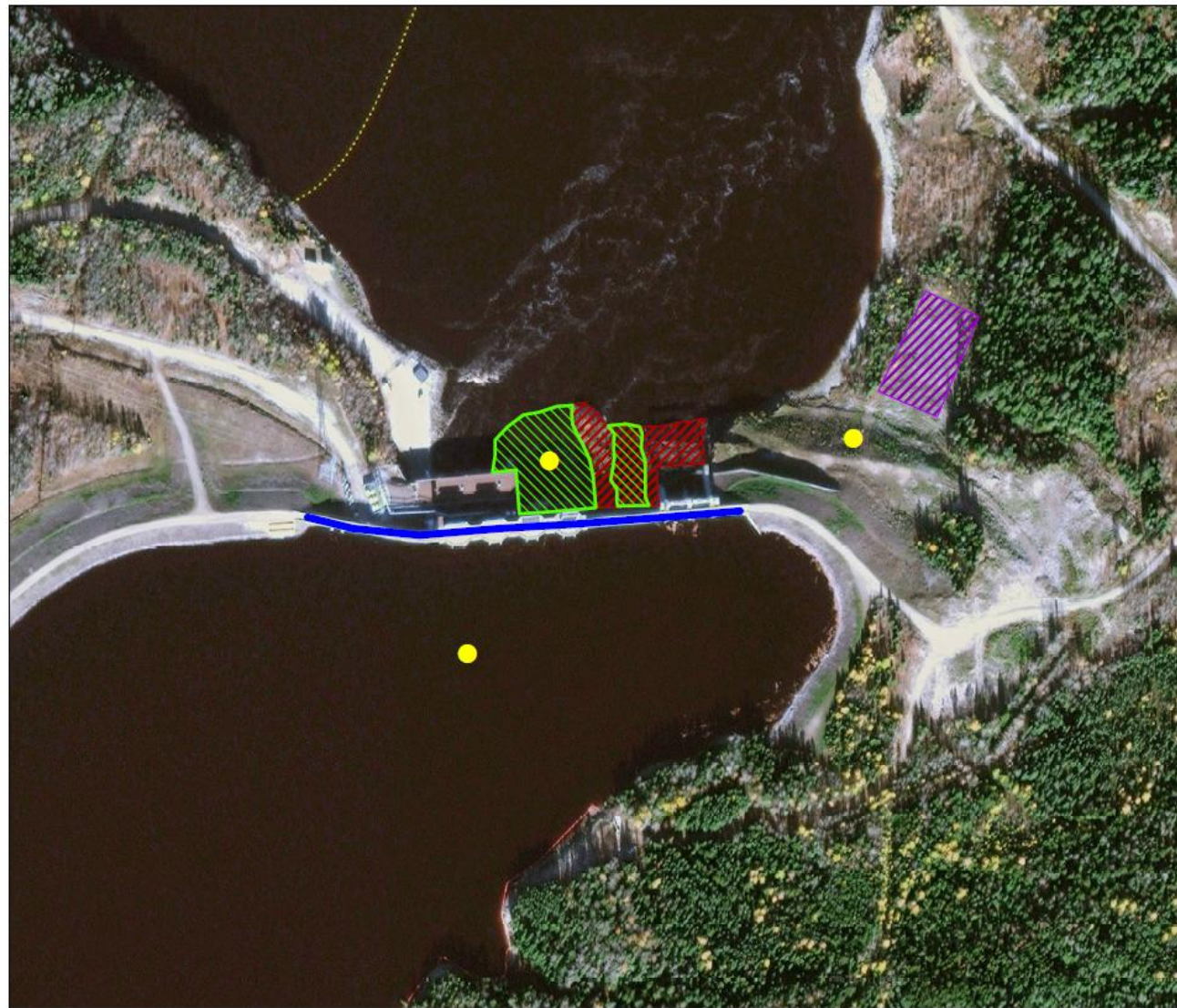

 Approval - Navigable Waters Protection Act - Temporary Bridge

Figure 4: Kipling GS - Permits




Legend


Ministry of Natural Resources


 Approval Phase 1A - Marine Access Pad

Department of Fisheries & Oceans


 Letter of Advice

Ministry of Environmental

 Application Pending for Certificate of Approval - Sediment Pond

 Permit To Take Water – Dewatering

Transport Canada

 Approval - Navigable Waters Protection Act - Kipling Dam

Issues and Concerns

- EWG inquired into the linkage (or possible linkage) between the Water Management Standing Advisory Committee and the MECC.

ACTION REQUIRED: Get clarification from the MECC on this issue.

- Clarification is required on whether or not the Cultural Heritage Centre proposed in the EA T&C 2(c) is separate from the Cultural Camp proposed in the Amisk-oo-skow.

ACTION REQUIRED: Get clarification from the MECC and/or the Implementation Committee on this issue.