



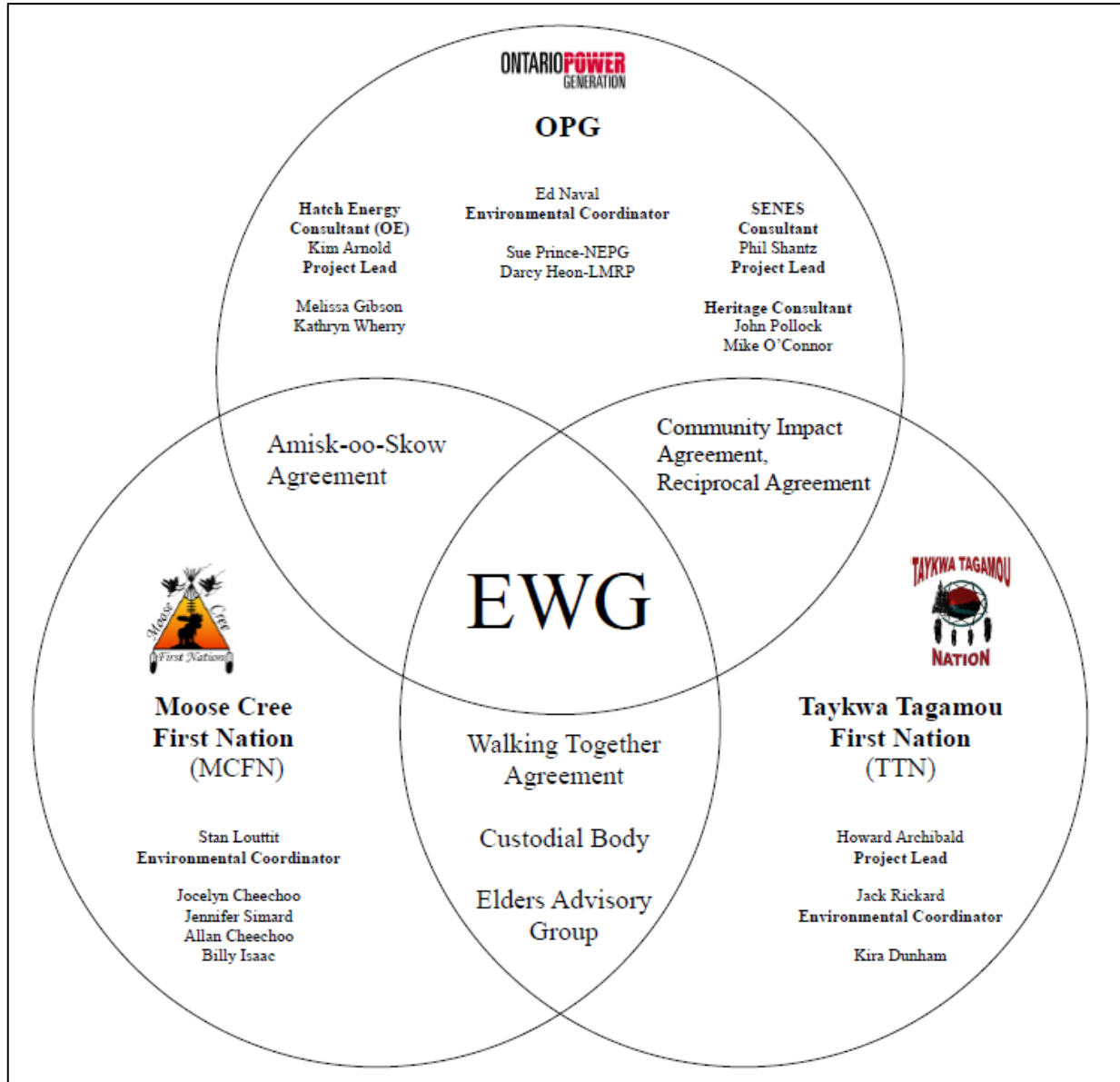
Environmental Working Group

Monthly Report

February 2011

ENVIRONMENTAL WORKING GROUP

Relationship Organizational Chart



ACTIONS COMPLETED

- Weekly Environmental Working Group (EWG) and EWG/Kiewit – Alarie, a Partnership (KAP) meetings.
 - The EWG review its Action Items that include priority permit reviews, and deliverables to the Mattagami Extensions Coordinating Committee (MECC).
 - KAP gives EWG a construction up date every week and discusses any upcoming issues and/or urgent permit reviews.
 - Specific discussions were held to prepare for the Due Diligence Audit, and the Environmental Effects Monitoring Workshop.
- Environmental Assessment (EA) Term and Conditions Compliance Plan – Finalized the Plan and presented it to the MECC on Feb. 24, 2011.
- Preparations for Due Diligence Audit – EWG review of template (Audit proposed for March 29-30, 2011).
- Preliminary Environmental Effects Monitoring (EEM) Workshop – Preliminary coordination of logistics for workshop to be held on April 27 and 29, 2011, and confirmation of presenters/EWG attendee list.
- Preliminary EEM Workshop Framework and Plan- revision of the Framework and Plan to update and reflect EWG comments.
- Smoky Falls Fish Habitat Compensation Plan Revision – Involved in discussions with KAP regarding KAP's proposed changes to the current fish habitat compensation plan.
- Ongoing development of methodology for incorporating Traditional Ecological Knowledge (TEK) in the Lower Mattagami River Project.
- Determination of Project Environmental Reporting review schedule for EWG and presentation of the Reports to the MECC.

UPCOMING ACTION TO BE COMPLETED FOR 2011

	Jan	Feb	Mar	Apr	May	June	July	Aug	Sept	Oct	Nov	Dec
Draft of Traditional Ecological Knowledge in relation to the Lower Mattagami River Project.												
Environmental Effects Monitoring Workshop												
EA Variances – EWG Review and Submission to MECC												
EA Terms and Conditions Environmental Compliance Plan – EWG Review and Submission to MECC.												
EWG T of R – Submission to MECC												
EWG Work Plan – Submission to MECC												
EWG Environmental Due Diligence Audit #1												
Environmental Audit – Accreditation Training												
EWG presentation to the MECC the LMRP "Operations Report" (fulfills												

	Jan	Feb	Mar	Apr	May	June	July	Aug	Sept	Oct	Nov	Dec
Condition 4(a) of EA T&Cs).												
EWG present to the MECC "Fish Habitat Assessment Report", and "Baseline Fish Methyl Mercury Report" (fulfills Condition 4b. of EA T&Cs).												
EWG present to the MECC "Cost Benefit Analysis of Mitigating and Reducing Adam Creek Spill" (fulfills Condition 4(c) and (e) of EA T&Cs).												
EWG present to the MECC the methods and means of ensuring that restrictions on hunting and fishing (fulfills Condition 5(a) and (c) of EA T&Cs).												
EWG present to the MECC "Terrestrial Habitat Restoration Downstream of Kipling GS" (fulfills Condition 4b. of EA T&Cs).												
EWG present to the MECC a Public Information Program to communicate the results of fish methyl mercury baseline reports (fulfills Condition 7(a) and (b) of EA T&Cs).												
EWG present to the MECC the cumulative effects data developed during the Federal EA process (fulfills Condition 8(a) and (b) of EA T&Cs).												
EWG present to the MECC the results and recommendations of periodic re-evaluations (fulfills Condition 10 of EA T&Cs).												
EWG present to the MECC "Hydroelectric Generating Facilities Decommissioning Plan" (fulfills Condition 11(a) of EA T&Cs).												
EWG present to the MECC "The Noise Protocol Plan" (fulfills Condition 18 of EA T&Cs).												

Construction Update

Construction

General

- Permanent Camp Phase 1 – Morris Modular continued installation work and remedial work on deficiencies identified by the ESA. Two of the four dorm units in Phase 1 are occupied as of February 22, 2011 (see Figure 1).
- Construction power has been connected to the office and part of the permanent camp at Smoky Falls and at Little Long.
- KAP and Morris Modular are negotiating a modified agreement for installation and procurement of the permanent camp.
- The batch plant has scheduled test batching for the middle of March.



Figure 1: Placing the containment pit at the Smoky Falls Permanent Camp

Smoky Falls

- Smoky Falls Island excavation continues of various elevations within the powerhouse, tailrace, and intake footprint. Overburden removal continues in concentrated area to the right side of the powerhouse footprint where rock was originally anticipated (see Figure 2).
- Construction of the cut-off wall for the upstream cofferdam was completed and dewatering began February 24, 2011.



Figure 2: Rock excavation at the Smoky Falls tailrace area

Little Long

- Cellular cofferdam downstream grout curtain drilling is complete and grouting of interconnections is scheduled to start in early March (see Figure 3).
- Redesign of the shore tie-in is complete and installation began during the week starting February 26th.



Figure 3: Grout drilling operation on top of the Little Long cofferdam.

Harmon

- Manitowoc 2250 crawler crane has been relocated from Little Long and assembled at the Harmon site in preparation for cofferdam construction (see Figure 4).



Figure 4: Overview of work at Harmon

Kipling

- Excavation ongoing on the right abutment approach leading up to the sluiceway. Access road work continues on surface drainage and modifications to decrease the grade (see Figure 5).

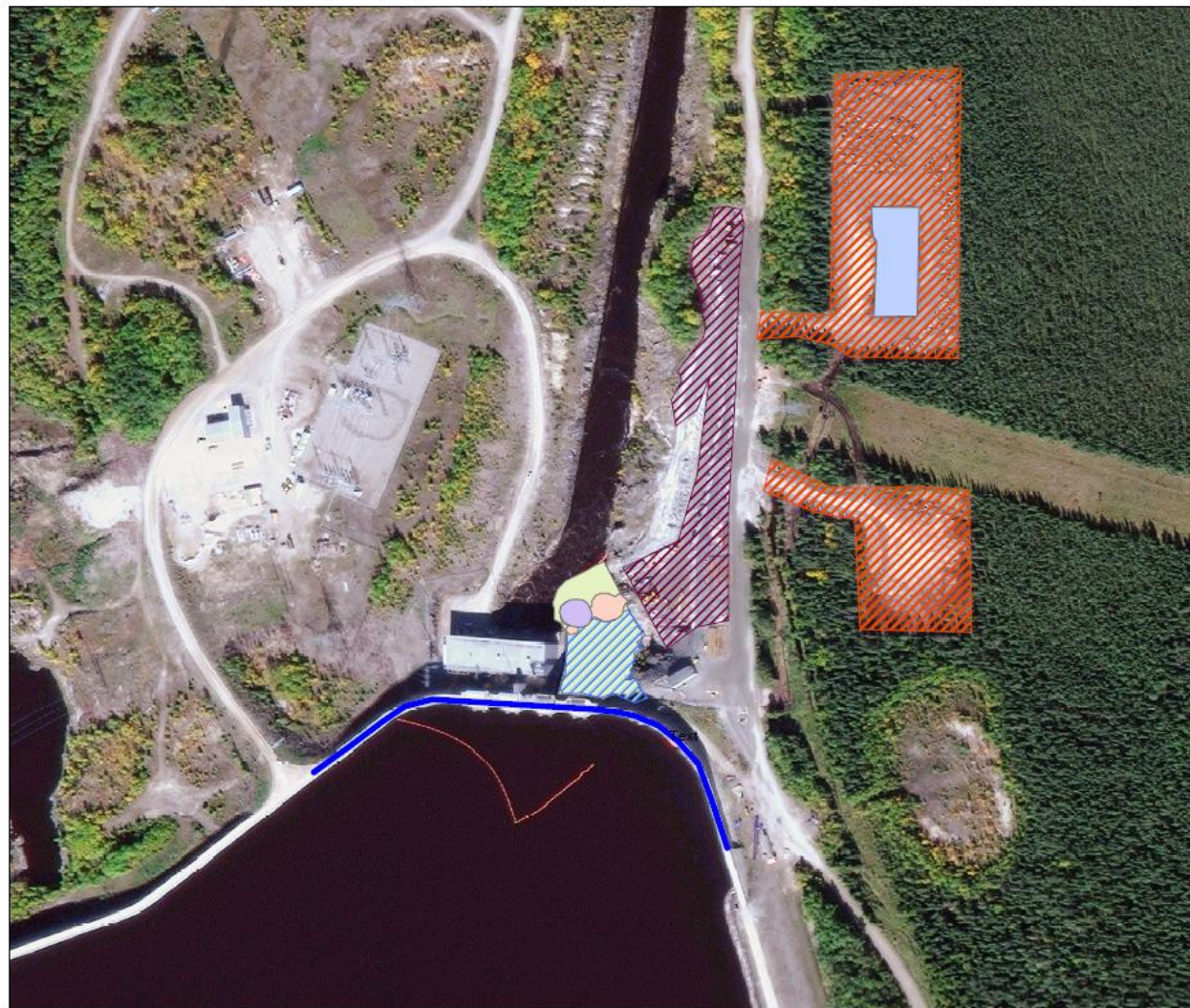


Figure 5: Breaking ice at Kipling.

Monthly Summary – February 2011



Date:	March 3, 2011		
SPILLS			
No. of Spills:	10; Spill Reports 75-84		
Classification of Spills:	<u>Project Classification</u> Minor – 4 Moderate – 5 Major – 1 To Water - 0 <u>Ministry of the Environment (MOE) Classification</u> Non-reportable - 8 Reportable to MOE <ul style="list-style-type: none">- Class C – 2- Class B – 0- Class A – 0		
Project Classification (KAP) Minor: ≤ 10L Moderate: Between 10L and 100L Major: ≥100L To Water: Any amount is reportable to the MOE		MOE Classification Non-reportable: < 100L Reportable to MOE <ul style="list-style-type: none">• Class C - Less Serious• Class B – Serious• Class A – Very Serious	
REQUESTS FOR INFORMATION (RFIs)			
No. Reviewed:	0	List:	
No. Sent to KAP:	1	List:	n/a
PERMIT AND APPROVAL REVIEW			
No. Reviewed:	6	List:	<ul style="list-style-type: none">• Smoky Falls (SF) Certificate of Approval (CofA) Application - Sewage Holding Tanks Little Long License to Collect Fish – Cofferdam• SF MOE Permit-to-take-Water Wells Amendment• SF MOE CofA Wastewater Treatment Plant Amendment• Little Long Extension - Application for Plans and Specifications Approval• Kipling MOE CofA - Sediment Pond
No. Sent to KAP:	4	List:	<ul style="list-style-type: none">• Revised Heritage and Archaeological Plan• Smoky Falls Island Contaminated Soil Remediation Report• Harmon Temporary Cofferdam MNR Application Temporary Transmission Line - Revision 2
See figures 1 to 4 below for site location of the permits that have been or are pending approval.			

Figure 1: Little Long GS - Permits







Legend

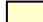
Ministry of Natural Resources

-  Approval - Lakes Rivers Improvement Act
-  License to Collect Fish for Scientific Purposes

Ministry of Environment

-  Permit To Take Water - Construction Activities
-  Permit To Take Water - Excavation
-  Permit To Take Water - Initial & Seepage Dewatering
-  Certificate of Approval - Industrial Sewage Works & Disposal of Stormwater

Department of Fisheries & Oceans

-  Letter of Advice

Transport Canada


-  Approval - Navigable Waters Protection Act - Little Long Dam

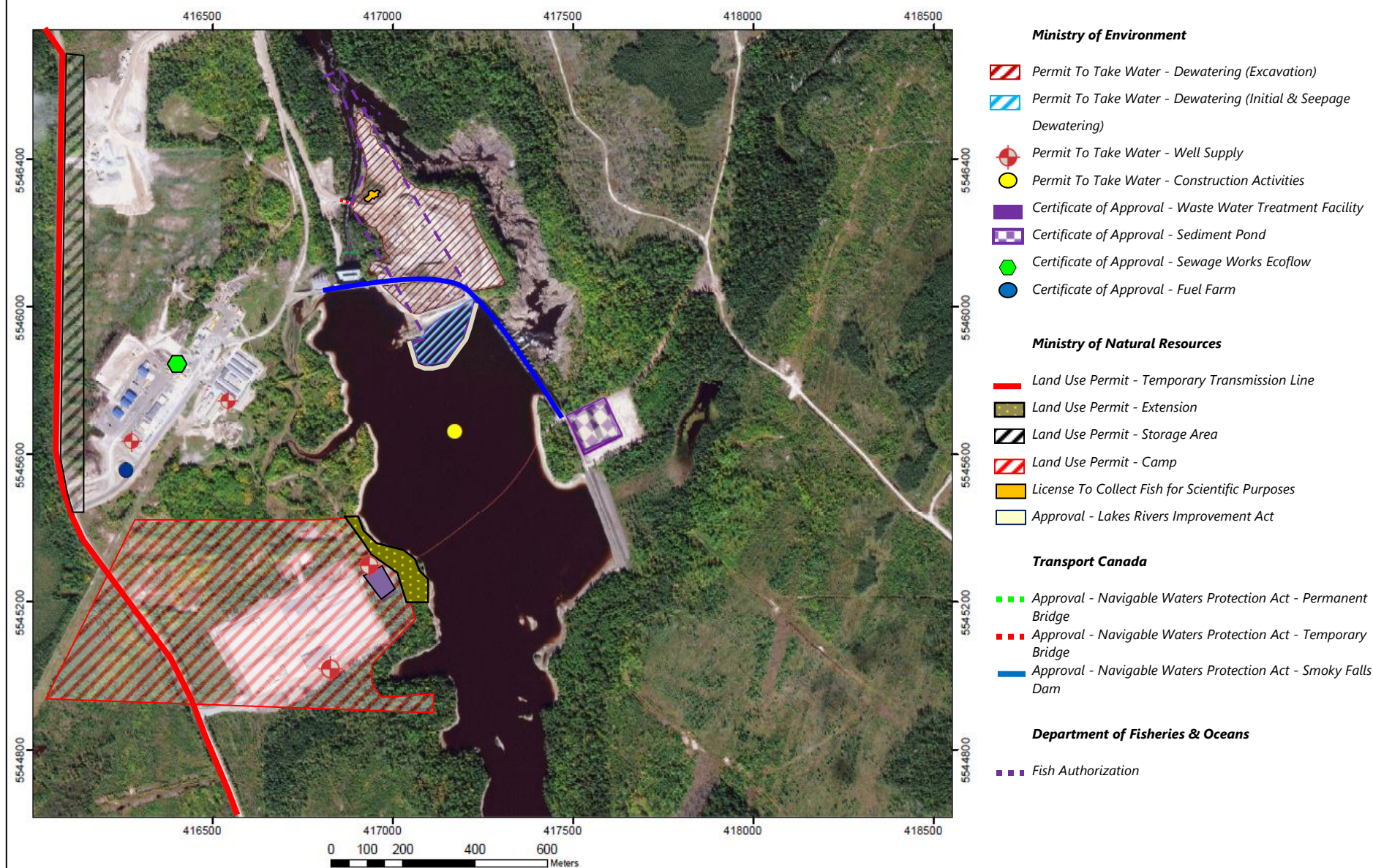
Figure 2: Smokey Falls GS - Permits

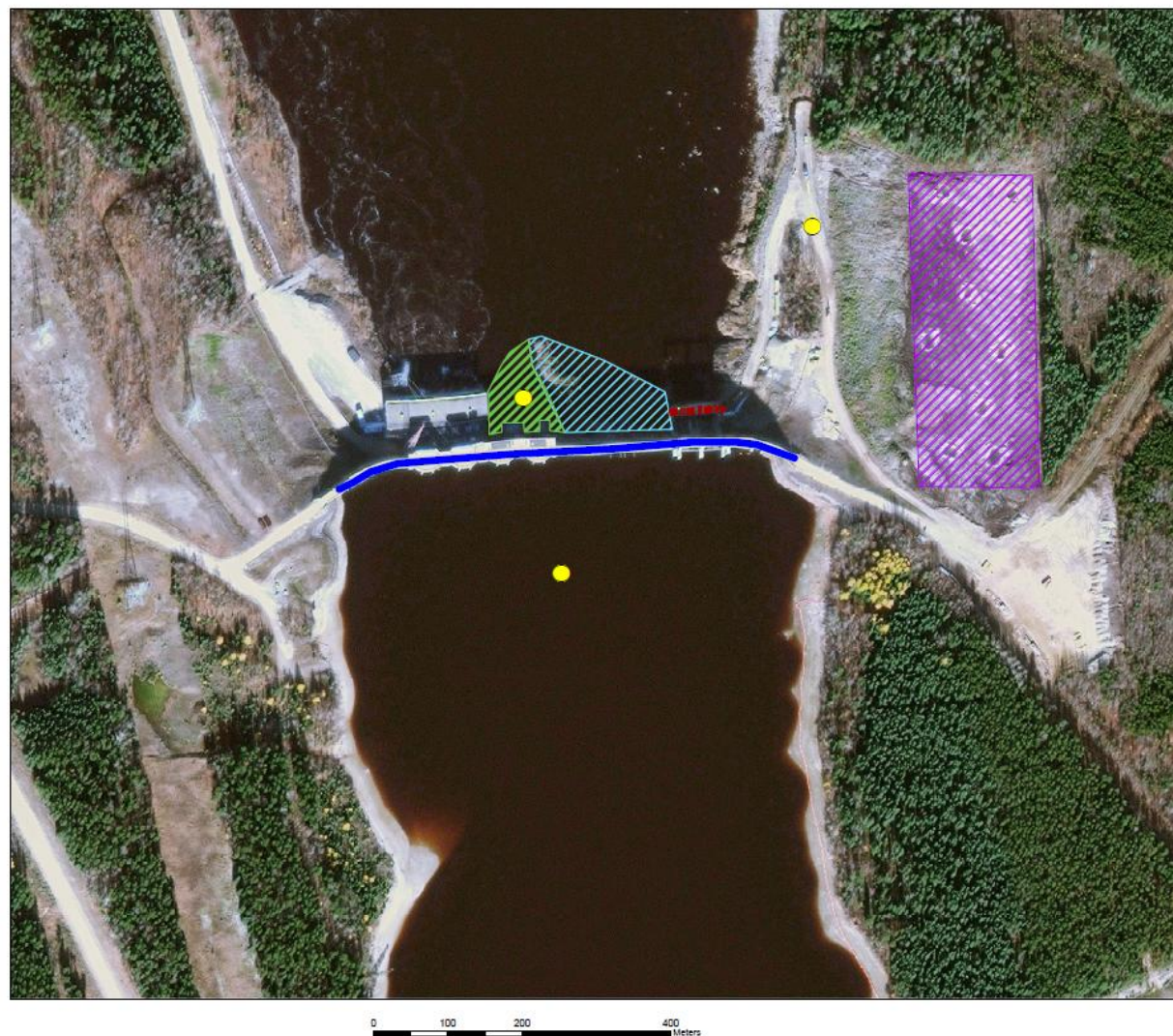





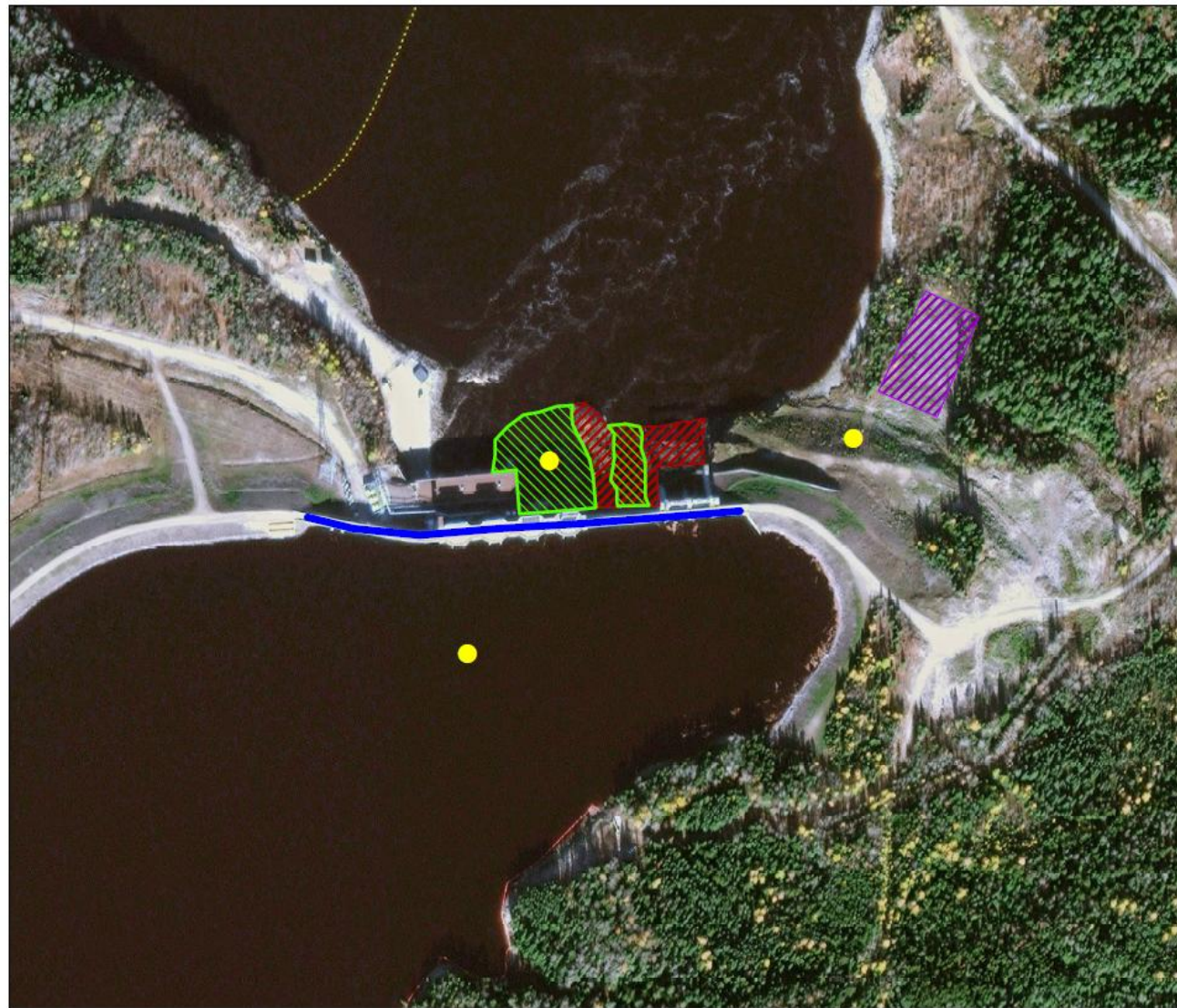

Figure 3: Harmon GS - Permits**Legend****Ministry of Natural Resources** Approval - Lakes Rivers Improvement Act**Ministry of Environment** Application Pending - Certificate of Approval -
Sediment Pond Permit To Take Water - Dewatering**Department of Fisheries & Oceans** Letter of Advice**Transport Canada** Navigable Waters Protection Act Approval - Navigable Waters Protection Act -
Temporary Bridge

Figure 4: Kipling GS - Permits




Legend


Ministry of Natural Resources


 Approval Phase 1A - Marine Access Pad

Department of Fisheries & Oceans


 Letter of Advice

Ministry of Environmental

 Application Pending for Certificate of Approval - Sediment Pond

 Permit To Take Water - Dewatering

Transport Canada

 Approval - Navigable Waters Protection Act - Kipling Dam

Issues and Concerns

- Clarification is still required on whether or not the Cultural Heritage Centre proposed in the EA T&C 2(c) is separate from the Cultural Camp proposed in the Amisk-oo-skow.

Action Required: As information is gathered on First Nation cultural/heritage/archaeological values and artefacts, the EWG will work toward getting clarification on this issue.