

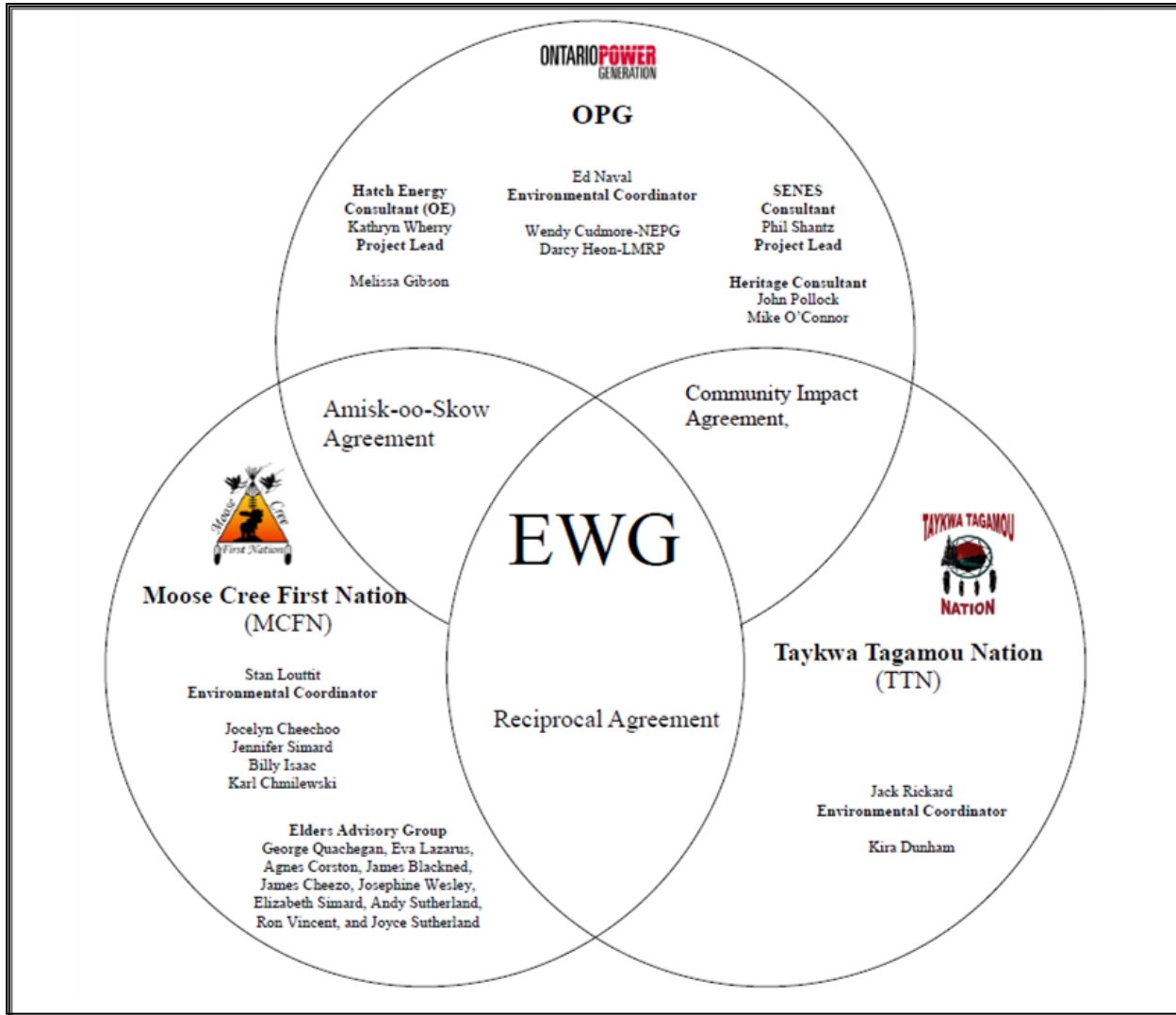
Environmental Working Group

Monthly Report

December 2011

ENVIRONMENTAL WORKING GROUP

Relationship Organizational Chart



- Weekly Environmental Working Group (EWG) and EWG/Kiewit – Alarie, a Partnership (KAP) meetings.
 - The EWG review its Action Items that include priority permit reviews, and deliverables to the Mattagami Extensions Coordinating Committee (MECC).
 - KAP gives EWG a construction up date every week and discusses any upcoming issues and/or urgent permit reviews.
 - Specific items that were discussed are below.
- OPG and Hatch members of the EWG submitted information for the drafting of the Environmental Effects Monitoring Workshop Report.
- Ongoing review and compilation of Traditional Ecological Knowledge (TEK) for the Lower Mattagami River Project.
- Review and revision of Cost Benefit Analysis of Reducing Spill in Adam Creek based on further EWG comments. Currently working on revision No. 4. Ongoing discussions regarding Term and Condition 4 c.
- Face to face EWG meeting on December 14, 2011.
- Operation Overview Report was revised to incorporate EWG comments.

ACTIONS COMPLETED in 2011

	Jan	Feb	Mar	Apr	May	June	July	Aug	Sept	Oct	Nov	Dec
Environmental Effects Monitoring Workshop												
Environmental Assessment (EA) Variances – EWG Review and Submission to MECC												
EA Terms and Conditions Environmental Compliance Plan – EWG Review and Submission to MECC.												
EWG Terms of Reference (ToR) – Submission to MECC												
EWG Work Plan – Submission to MECC												
EWG Environmental Due Diligence Audit #1												
Environmental Audit – Accreditation Training												
EWG presentation to the MECC the LMRP “Operations Report” (Condition 4(a) of EA T&Cs).												
The MECC were presented the draft “Fish Habitat Assessment Report”, and “Baseline Fish Methyl Mercury Report” (Condition 4b. of EA T&Cs) by Hatch.												
The MECC were presented the draft “Cost Benefit Analysis of Mitigating and Reducing Adam Creek Spill” (Condition 4(c) and (e))												

	Jan	Feb	Mar	Apr	May	June	July	Aug	Sept	Oct	Nov	Dec
of EA T&Cs) by Hatch.												
EWG present to the MECC the methods and means of ensuring that restrictions on hunting and fishing (Condition 5(a) and (c) of EA T&Cs).												TBD*
EWG present to the MECC "Terrestrial Habitat Restoration Downstream of Kipling GS" (Condition 5b. of EA T&Cs).												TBD*
EWG present to the MECC a Public Information Program to communicate the results of fish methyl mercury baseline reports (Condition 7(a) and (b) of EA T&Cs).												TBD*
EWG present to the MECC the cumulative effects data developed during the Federal EA process (Condition 8(a) and (b) of EA T&Cs).												TBD*
Draft of Traditional Ecological Knowledge in relation to the Lower Mattagami River Project.												TBD in 2012
EWG present to the MECC the results and recommendations of periodic re-evaluations (Condition 10 of EA T&Cs).												TBD in 2012
EWG present to the MECC "Hydroelectric Generating Facilities Decommissioning Plan" (Condition 11(a) of EA T&Cs).												TBD in 2012
EWG present to the MECC "The Noise Protocol Plan" (Condition 18 of EA T&Cs).												TBD in 2012

*The MECC will communicate to the EWG the priority list of reports to be presented.

Construction

General

- Permanent Camp – Installation of the last phase of dormitories was completed on December 6th. Approximately 860 rooms are available on site with the completion of the last phase of dormitories.

Smoky Falls

- Work on the winter shelter continued throughout the month of December, and was completed prior to the Christmas shutdown (Figure 1). Over the Christmas period, the heaters were kept on to maintain a constant temperature inside the shelter (Figure 2).
- Concrete pours in the service bay and intake areas continued, with a total of 300 m3 of concrete poured from December 3rd to December 23rd. Rebar and form work continued in the powerhouse and draft tube areas when overhead work was not under way.
- Preparations continue to reconstruct the Smoky Falls Unit 2 / Unit 3 bullnose. Drilling for form anchors, the installation of formwork, and anchor sleeve installations are progressing. Excavation operations (drill and blast) in the wet tailrace progressed until mid-December and were then put on hold until spring 2012.
- Excavation and blasting of the abutments for the permanent bridge was completed before the Christmas shutdown.



Figure 1: Smoky Falls Winter Shelter

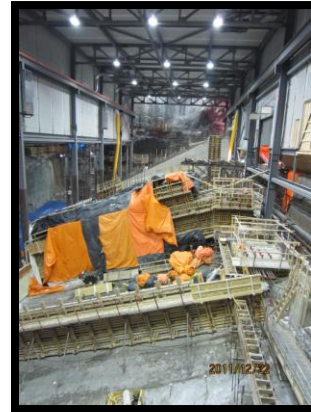


Figure 2: Smoky Falls Powerhouse
from east wall

Little Long

- Concrete work is progressing well, with 894 m3 of concrete poured in the powerhouse and intake areas. Work has continued to advance at an accelerated pace. Little Long is back on plan (Figure 3).
- AFI Hydro mobilized equipment and materials required for mud removal at the G3 intake Gate cavity between the bulkhead and intake gate. Initial efforts to remove mud were unsuccessful due to continuous water seepage. Outage planning is in progress to allow divers to seal the bulkhead stop logs prior to further mud removal.



Figure 3: Little Long Shelter

Harmon

- 52 m³ of concrete was poured in the powerhouse sump.
- Rock breaking continues in the powerhouse area.
- The winter shelter erection was completed prior to the Christmas shutdown (Figure 4).
- Efforts to minimize the sluiceway gate leakage continue. The gate was briefly opened to remove most of the accumulated ice. This was so successful that it was proposed as a daily task to manage undesirable ice formation.



Figure 4: Harmon Winter Shelter

Kipling

- The concrete cap on cofferdam Cell #3 was completed with a 258 m³ concrete pour.
- The template for Cell #2 was moved into position for installation. A fault zone containing clay, old timber and miscellaneous debris was discovered beneath the cell footprint. This created a need for additional engineering work, and the result was that Cell #2 was not able to be installed prior to the Christmas shutdown. The template was removed and placed on flexi-floats within the cofferdam area over the Christmas shutdown period (Figure 5).



Figure 5: Kipling Template #2 removed

Monthly Summary – December 2011

SPILLS			
No. of Spills:		2; Spill Reports 180-181 (see Figure 6 for LMRP spills breakdown).	
Classification of Spills:		<u>Project Classification</u> Minor – 2 Moderate – 0 Major – 0 To Water - 0 <u>MOE Classification</u> Non-reportable - 2 Reportable to MOE <ul style="list-style-type: none">- Class C – 0- Class B – 0- Class A – 0	
<u>Reportable Spills</u>			
No.	Quantity /Product Spilled	Spill Site	Reason for being Reportable
0	n/a	n/a	n/a
Project Classification (KAP) Minor: ≤ 10L Moderate: Between 10L and 100L Major: ≥100L To Water: Any amount is reportable to the MOE (See Figure 7: KAP Spills Response Flowchart)			MOE Classification Non-reportable: < 100L Reportable to MOE <ul style="list-style-type: none">• Class C - Less Serious• Class B – Serious Class A – Very Serious
Sediment Pond Exceedance of Effluent Objective (>15mg/L)			
No. of Exceedance days recorded	Location	Mitigation Measures used	
6	Harmon	The cofferdam seepage water, which had previously been discharging directly back into the river, was redirected to the sediment pond. The addition of the clean seepage water seems to have diluted the pond enough to bring it back under the effluent objective of 15 mg/L.	

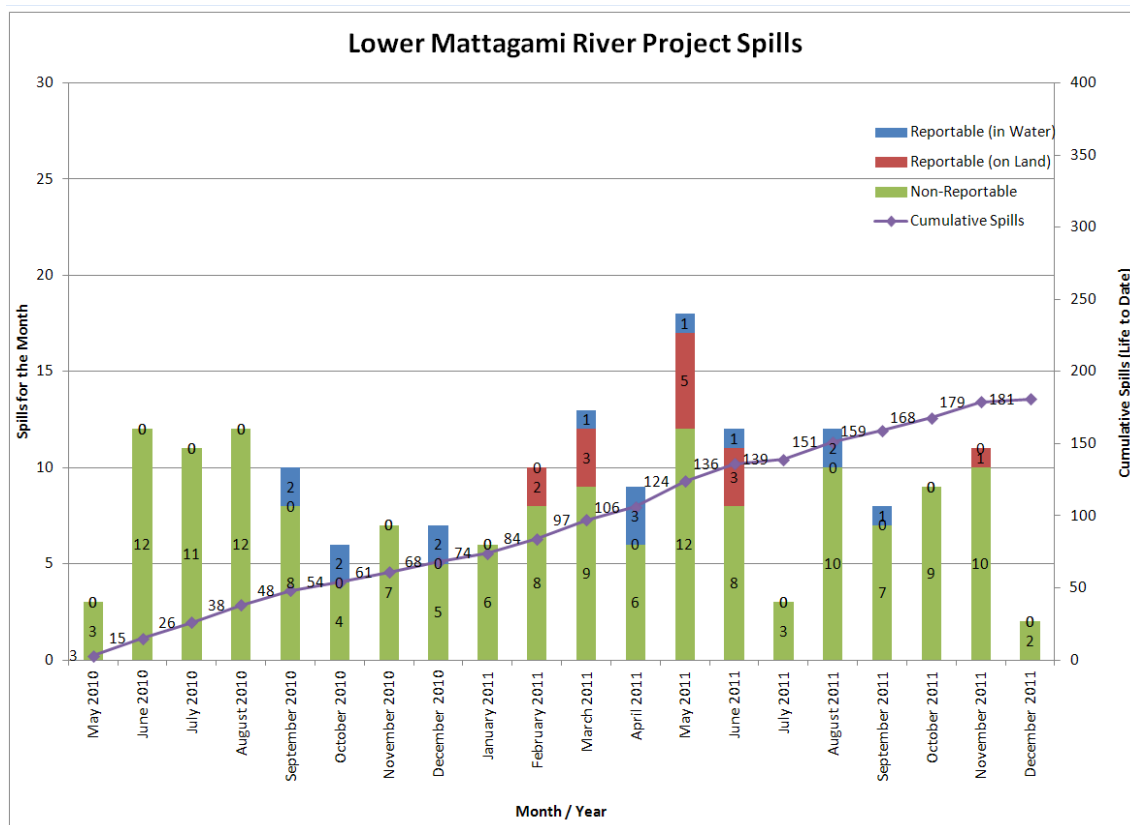


Figure 6: Lower Mattagami River Project spills

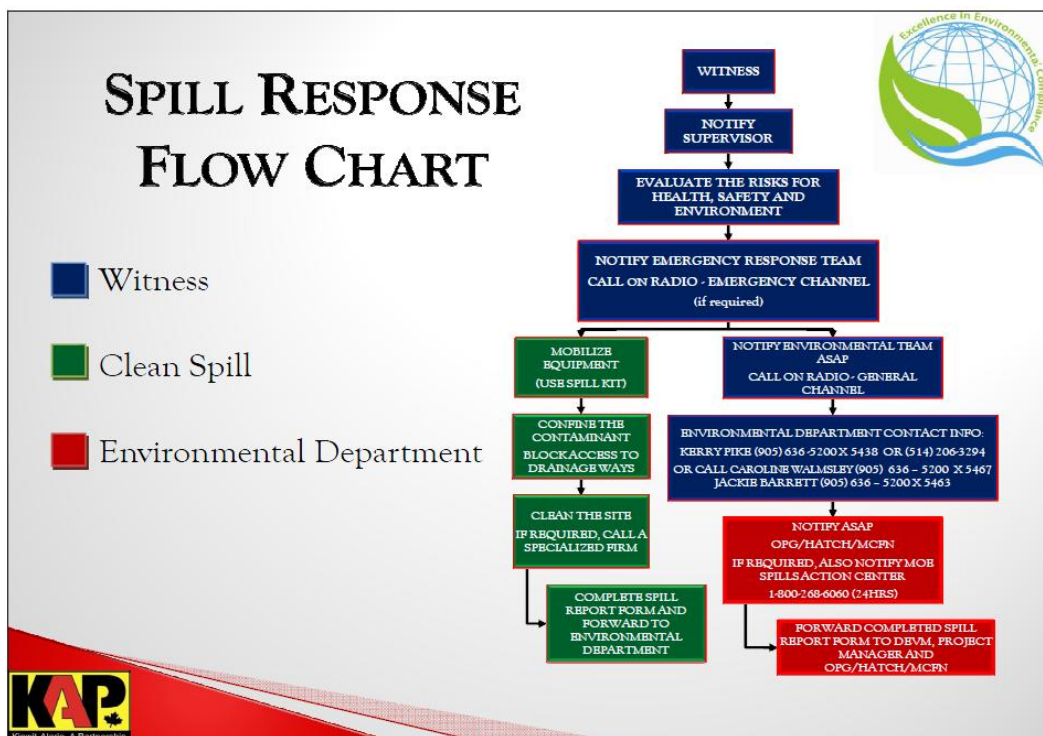


Figure 7: KAP Spills Response Flowchart

PERMIT AND APPROVAL REVIEW			
No. Reviewed:	2	List:	<ul style="list-style-type: none"> • Work Permit Application - Permanent Transmission Line Clearing • Certificate of Approval (CofA) Amendment Application
No. Sent to KAP:	1	List:	<ul style="list-style-type: none"> • Work Permit Application - Permanent Transmission Line Clearing
Reports Review			
No. Reviewed for KAP	0	List	n/a
No. Sent to KAP	0	List	n/a
No. Reviewed for MECC	3	List	On-going: <ul style="list-style-type: none"> • Cost Benefit Analysis of Mitigating and Reducing Spill in Adam Creek. • Operation Overview Report. • Baseline Methyl Mercury Reports and Mercury in Fish Flesh Summary Report.
No. Review Completed	0		n/a
REQUESTS FOR INFORMATION (RFIs)			
No. Reviewed:	0	List:	n/a
No. Sent to KAP:	0	List:	n/a
See figures 8 to 11 below for site location of the permits that have been or are pending approval.			

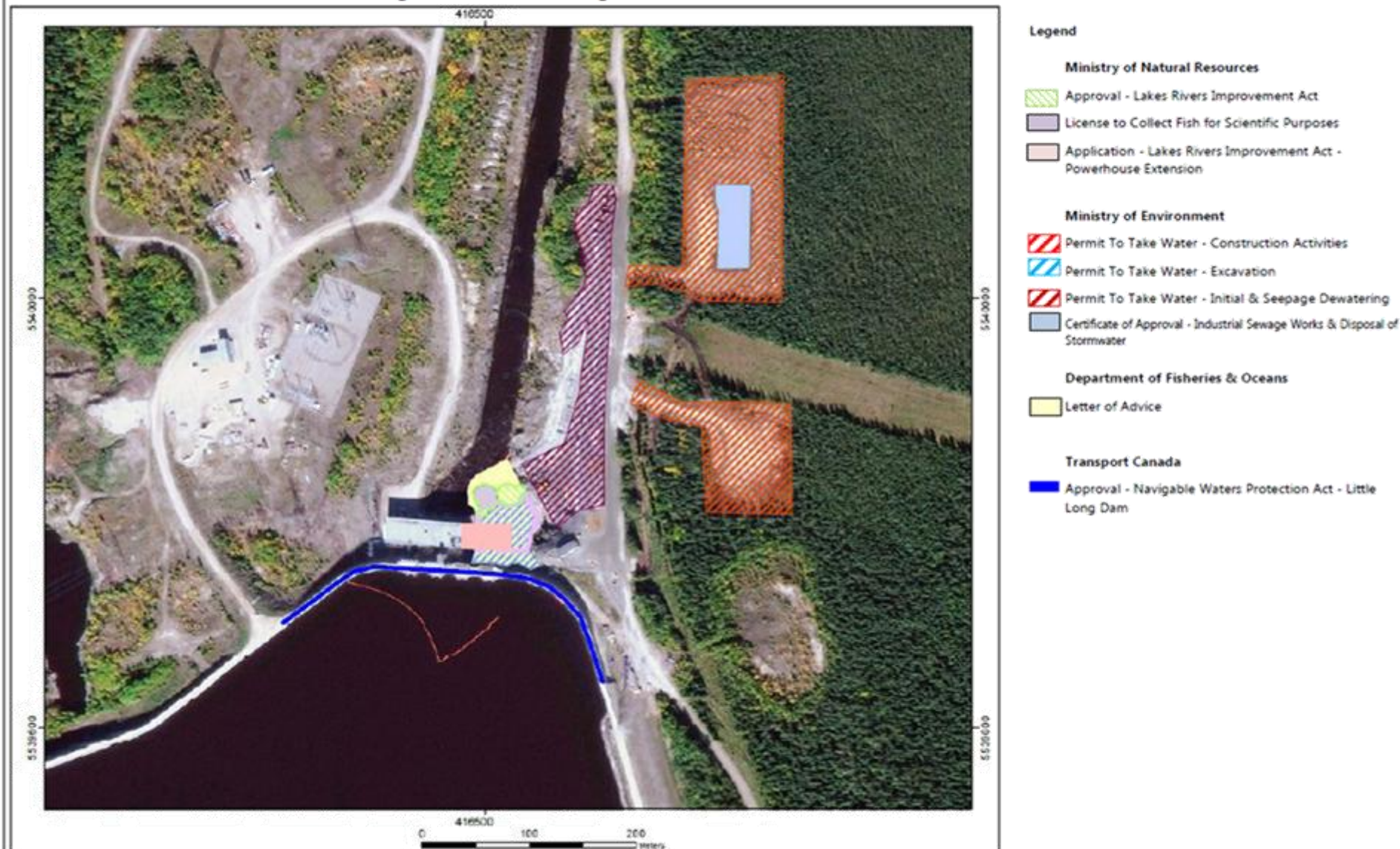
Figure 8: Little Long GS - Permits

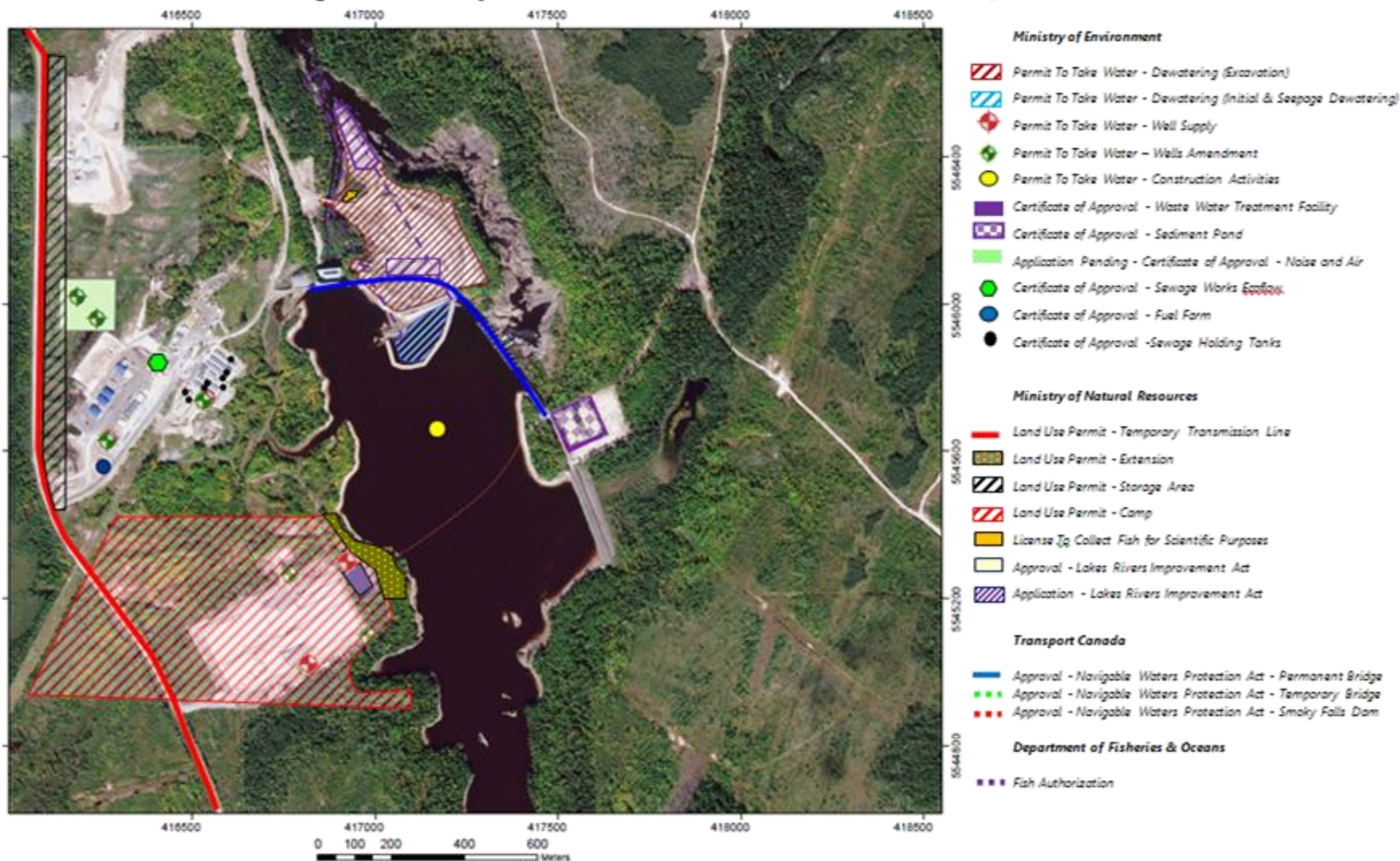
Figure 9: Smokey Falls GS - Permits

Figure 10: Harmon GS - Permits

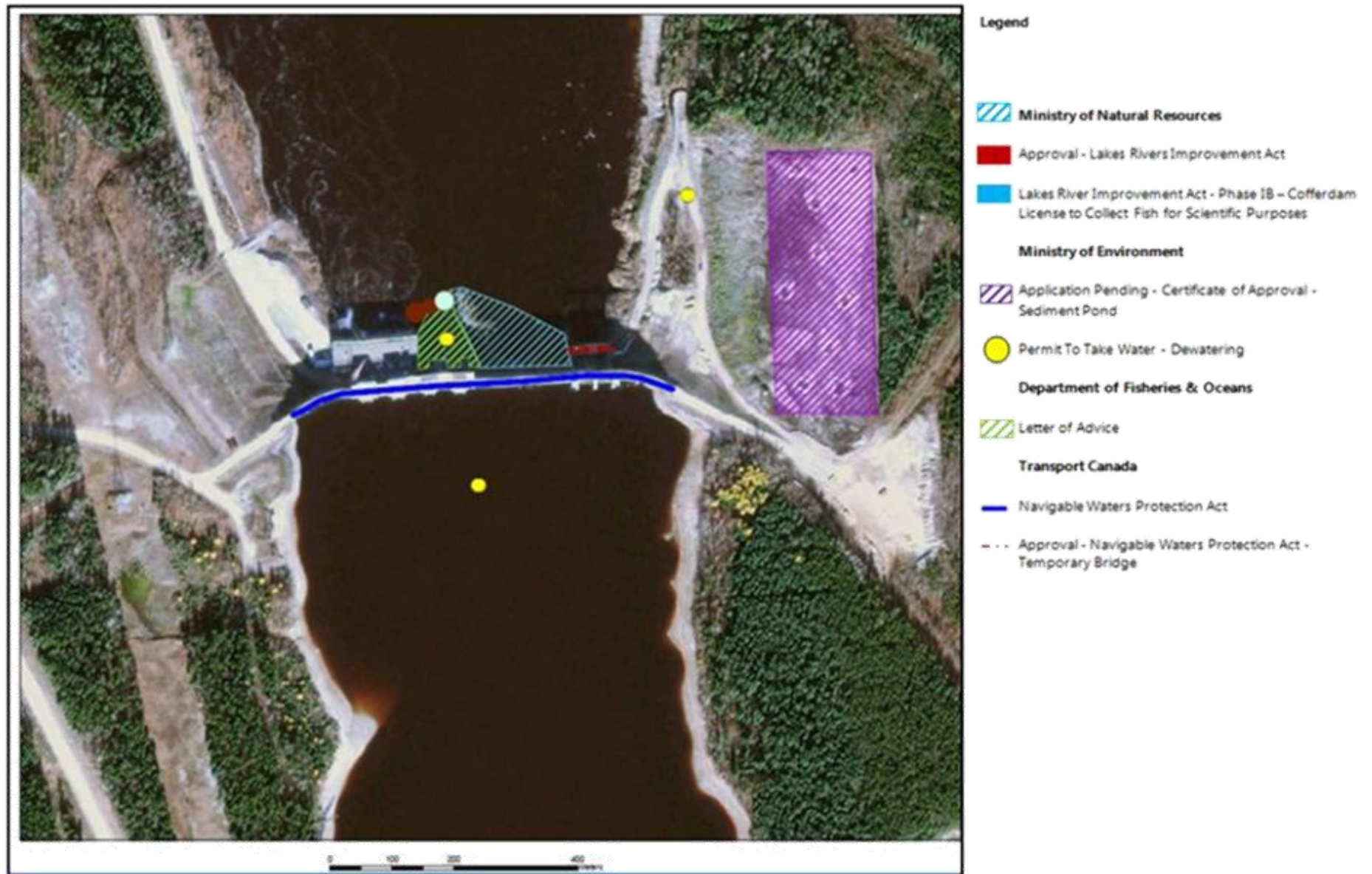
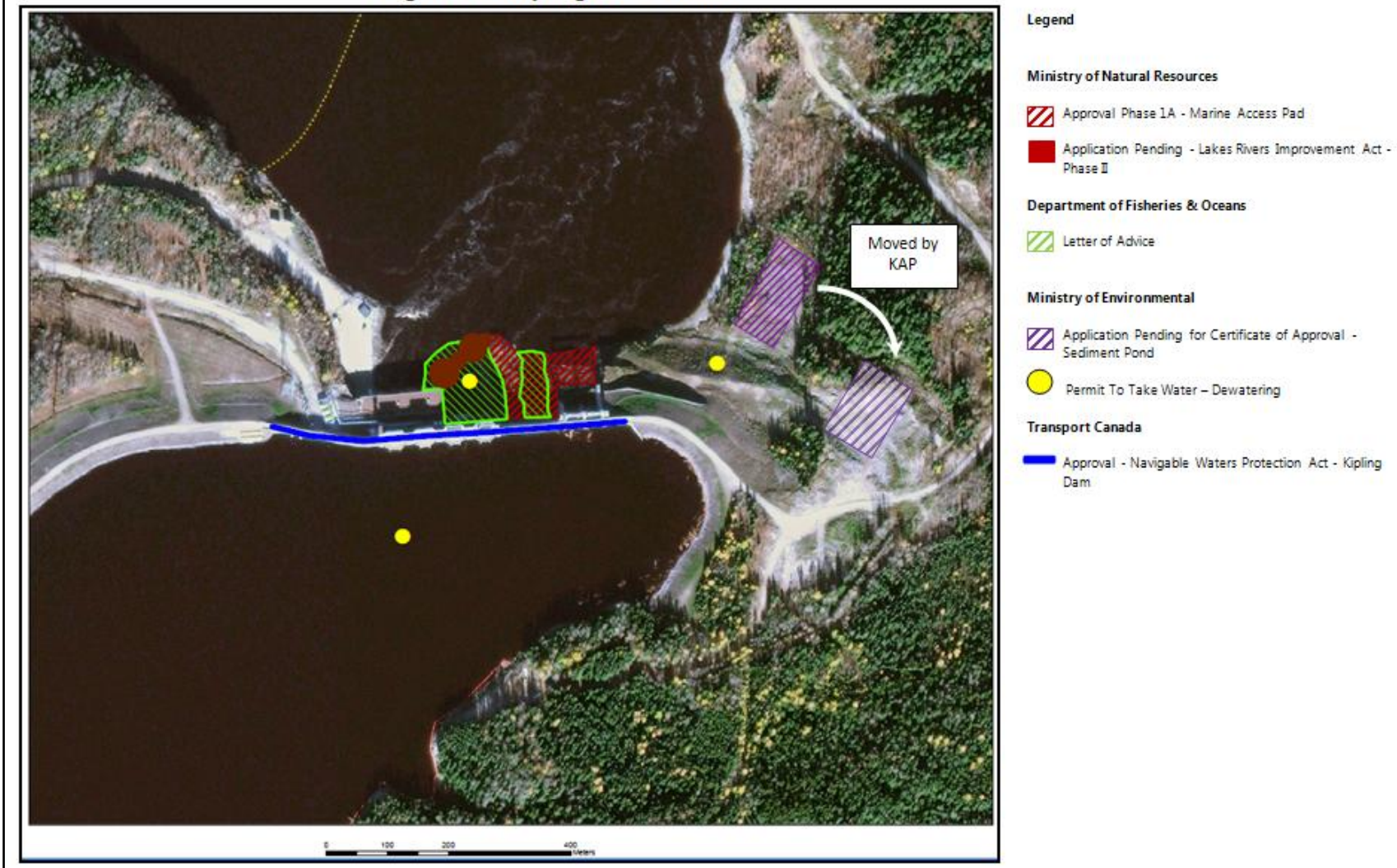


Figure 11: Kipling GS - Permits



Issues and Concerns

- MCFN members of the EWG were concerned with the idling of trucks near the permanent camp. The exhaust from the trucks was being inhaled by workers coming out of the camp.

Action Required: The EWG will ask KAP if the trucks can be moved or idling can be minimized.

- MCFN members of the EWG were concerned that EA reports did not include First Nation perspectives and aboriginal knowledge.

Action Required: The EWG will revise EWG flowchart to include TEK step to make sure it's being considered in all studies or reports.

- MCFN members of the EWG re-evaluated the EWG EA reports review process.

Action Required: EWG EA report review process and flowchart will be adjusted accordingly.