

---

**Environmental Working Group**

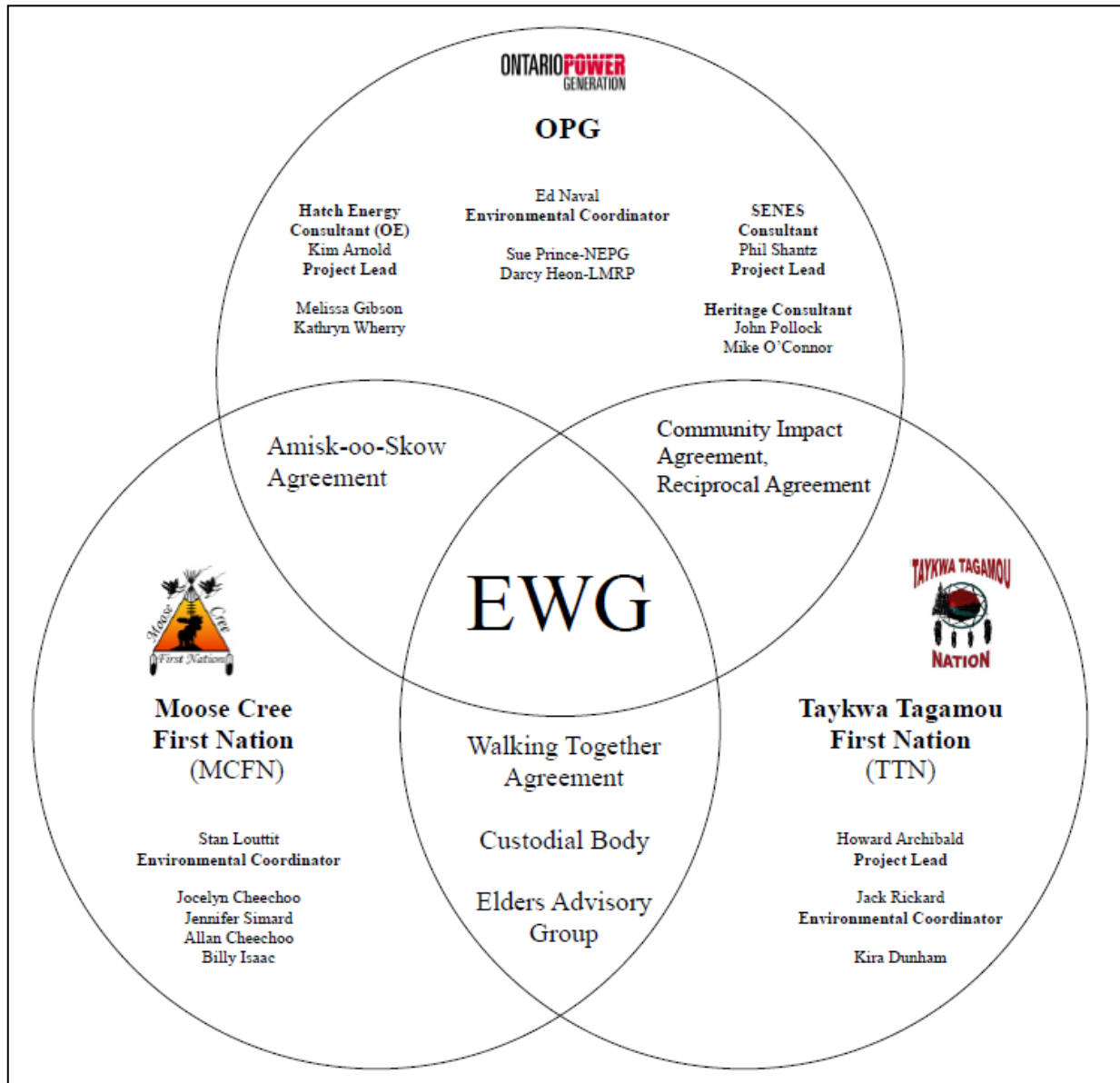
**Monthly Report**

---

**December 2010**

## ENVIRONMENTAL WORKING GROUP

### Relationship Organizational Chart



**ACTIONS COMPLETED**

- Environmental Stakeholder Meeting was held on December 8, 2010 in Timmins
  - Main topics that were discussed included a general Project Update, Contractor Update, an update on the Mattagami Extensions Coordinating Committee (MECC), and an update on Environmental Requirements (EA Terms and Conditions and EA Variances)
- Weekly EWG and EWG/KAP meetings
- Ongoing updates to EA Term and Conditions Compliance Plan
- Ongoing updates to the EA Variances
  - All EWG members have submitted their comments. It is anticipated that the EA Variances will be submitted to the MECC in January 2011. Once the MECC are satisfied the EA Variances will be submitted to the Ministry of the Environment.
- Ongoing updates to the Preliminary Environmental Effects Monitoring Workshop Framework
  - The EWG are working closely together and anticipate that the Effects Monitoring will take place in the spring of 2011.
- Ongoing updates to Preliminary Environmental Monitoring Plan
- Ongoing review and compiling of Traditional Ecological Knowledge for the Lower Mattagami River Project
- Preparing and reviewing an EWG Terms of Reference (ToR)
  - Each of the EWG members has submitted comments on the EWG ToR. Once this has been finalized (anticipated by the end of January) it will be submitted to the Implementation Committee and the MECC.
- Preparing a 2011 Work Plan for EWG
  - The EWG has completed its draft and are working towards finalizing the EWG Workplan by the end of January 2011.

**UPCOMING ACTION TO BE COMPLETED**

	Jan	Feb	Mar	Apr	May	June	July	Aug	Sept	Oct	Nov	Dec
Draft of Traditional Ecological Knowledge in relation to the Lower Mattagami River Project												
Environmental Effects Monitoring Workshop												
EA Variances – EWG Review and Submission to MECC												
EA Terms and Conditions Environmental Compliance Plan – EWG Review and Submission to MECC												
EWG T of R – Submission to MECC												
EWG Work Plan – Submission to MECC												
EWG Environmental Audit #1												
Environmental Audit – Accreditation Training												

## Construction Update

### Construction

#### General

- Permanent Camp Phase 1 – Morris Modular continued work within dorm rooms, arctic hallway and kitchen. Efforts continue to install service piping connections to the modular units, fire safety system and roof joint sealing. Sodexo has moved in some kitchen equipment.
- Work continues on setting and stringing distribution line poles along Smoky Falls Road for construction power.
- Temporary power substation installation and erection is underway, two temporary transformers were delivered in December.
- Road construction continues on Bradley Road and erosion control was implemented on the Bradley and Fred Flatt roads.
- Batch Plant erection and electrical setup is ongoing. Commissioning is scheduled for January.

#### Smoky Falls

- Smoky Falls Island excavation continues (Figure 5) downstream of the rock plug. Remainder of area to be excavated scheduled to commence once the cofferdam is complete and dewatered.
- Smoky Falls cut-off wall sub-contractor (ICANDA) has completed the cut-off wall on the spur dyke and started work on construction of the cut-off wall for the remainder of the upstream cofferdam.



Figure 5: Excavation at Smokey Falls

#### Little Long

- Little Long cofferdam (Figure 6) Cell #3 has been completed. Arcs between Cells #2 and #3 were sealed with concrete and filled with sand. Cellular cofferdam cell templates were dismantled and shifted to a lay-down area for future use at Harmon.



Figure 6: Little Long Cofferdam

**Harmon**

- Work continues with marine fill on access to the Harmon cofferdam area with placement of blasted rock from Smoky Falls (Figure 7).



Figure 7: Harmon Crane Pad

**Kipling**

- Kipling cofferdam access drilling and blasting near completion on the right abutment approach leading up to the sluiceway. Marine fill for crane pad area (Figure 8) continues with placement of blasted rock from Smoky Falls.





Figure 8: Kipling Crane Pad

**Monthly Summary – December, 2010**





Date:	January 12, 2011		
<b>SPILLS</b>			
No. of Spills:	7; Spill Reports 62- 68		
Classification of Spills:	<u>Project Classification</u> Minor – 4    Moderate – 1    Major – 0    To Water - 2  <u>Ministry of the Environment (MOE) Classification</u> Non-reportable - 5 Reportable to MOE - Class C – 2 - Class B – 0 - Class A – 0		
Project Classification (KAP) Minor: ≤ 10L Moderate: Between 10L and 100L Major: ≥100L To Water: Any amount is reportable to the MOE		MOE Classification Non-reportable: < 100L Reportable to MOE • Class C - Less Serious • Class B – Serious • Class A – Very Serious	
<b>REQUESTS FOR INFORMATION (RFIs)</b>			
No. Reviewed:	0	List:	
No. Sent to KAP:	1	List:	n/a
<b>PERMIT AND APPROVAL REVIEW</b>			
No. Reviewed:	0	List:	<ul style="list-style-type: none"> <li>• MOE Wastewater Classification</li> <li>• Revised Heritage and Archaeological Plan</li> <li>• Smoky Falls Island Contaminated Soil Remediation Report</li> <li>• Harmon Temporary Cofferdam MNR Application</li> </ul> n/a
No. Sent to KAP:	1	List:	<ul style="list-style-type: none"> <li>• MOE Wastewater Classification</li> </ul>
See figures 1 to 4 below for site location of the permits that have been or are pending approval.			



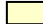
**Figure 1: Little Long GS - Permits****Legend****Ministry of Natural Resources**

-  Approval - Lakes Rivers Improvement Act
-  License to Collect Fish for Scientific Purposes

**Ministry of Environment**

-  Permit To Take Water - Construction Activities
-  Permit To Take Water - Excavation
-  Permit To Take Water - Initial & Seepage Dewatering
-  Certificate of Approval - Industrial Sewage Works & Disposal of Stormwater

**Department of Fisheries & Oceans**

-  Letter of Advice

**Transport Canada**


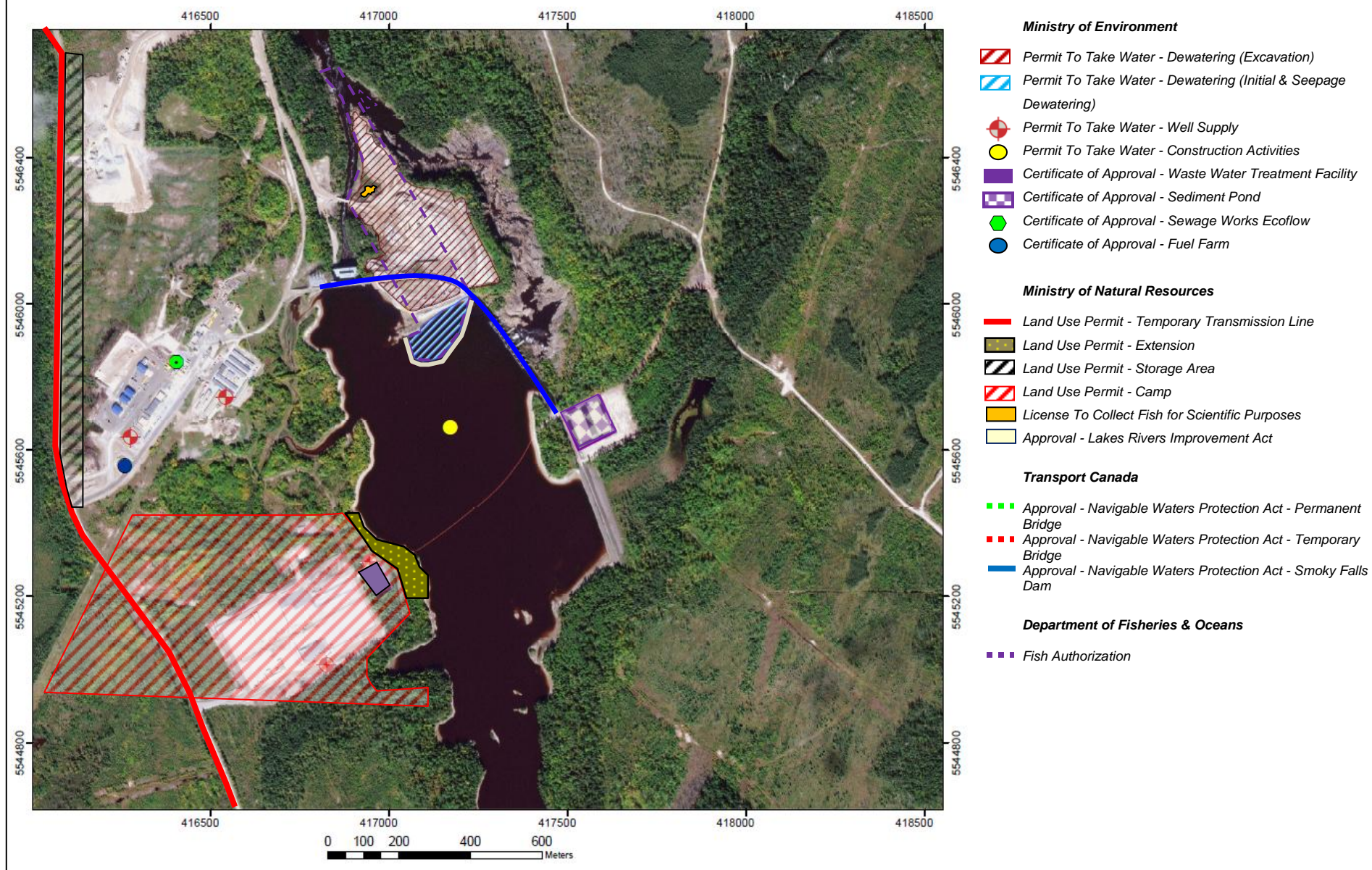
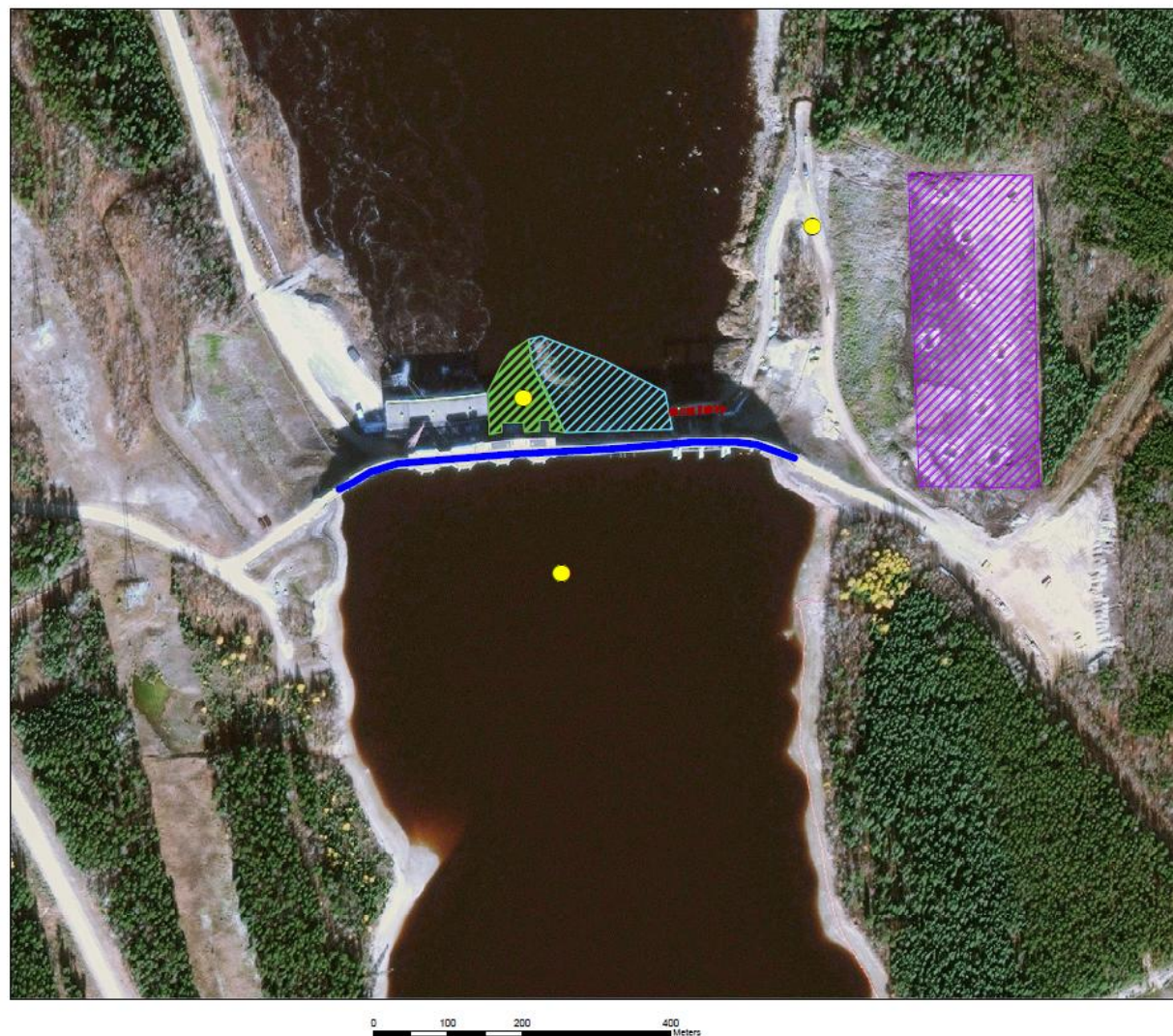






-  Approval - Navigable Waters Protection Act - Little Long Dam



Figure 2: Smokey Falls GS - Permits

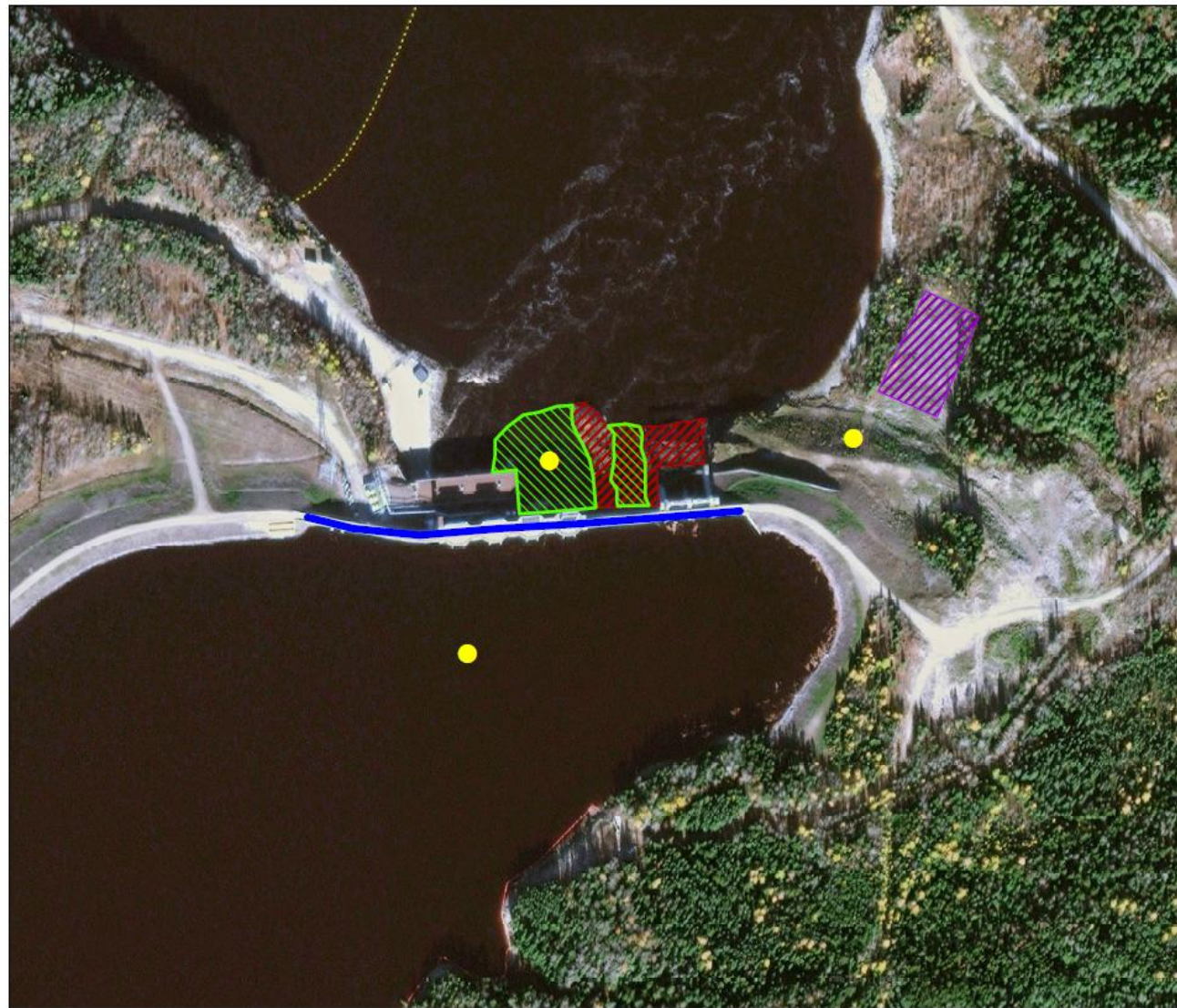




**Figure 3: Harmon GS - Permits****Legend****Ministry of Natural Resources** Approval - Lakes Rivers Improvement Act**Ministry of Environment** Application Pending - Permit To Take Water -  
Dewatering Application Pending - Certificate of Approval -  
Sediment Pond**Department of Fisheries & Oceans** Letter of Advice**Transport Canada** Navigable Waters Protection Act Approval - Navigable Waters Protection Act -  
Temporary Bridge




**Figure 4: Kipling GS - Permits**




**Legend**


**Transport Canada**

 Approval - Navigable Waters Protection Act - Kipling Dam


**Department of Fisheries & Oceans**


 Letter of Advice

**Ministry of Natural Resources**

 Approval Phase 1A - Marine Access Pad

**Ministry of Environmental**

 Application Pending for Certificate of Approval - Sediment Pond

 Application Pending - Permit To Take Water - Dewatering

<b>Issue and Concerns</b>
<ul style="list-style-type: none"><li>• With regards to submissions by the EWG to the MECC, clarification is required from the MECC on if it would rather consolidated EWG comments or separate comments from OPG, MCFN and TTN.</li></ul> <p>ACTION REQUIRED: Get clarification from the MECC on this issue.</p>