



---

## **Environmental Working Group**

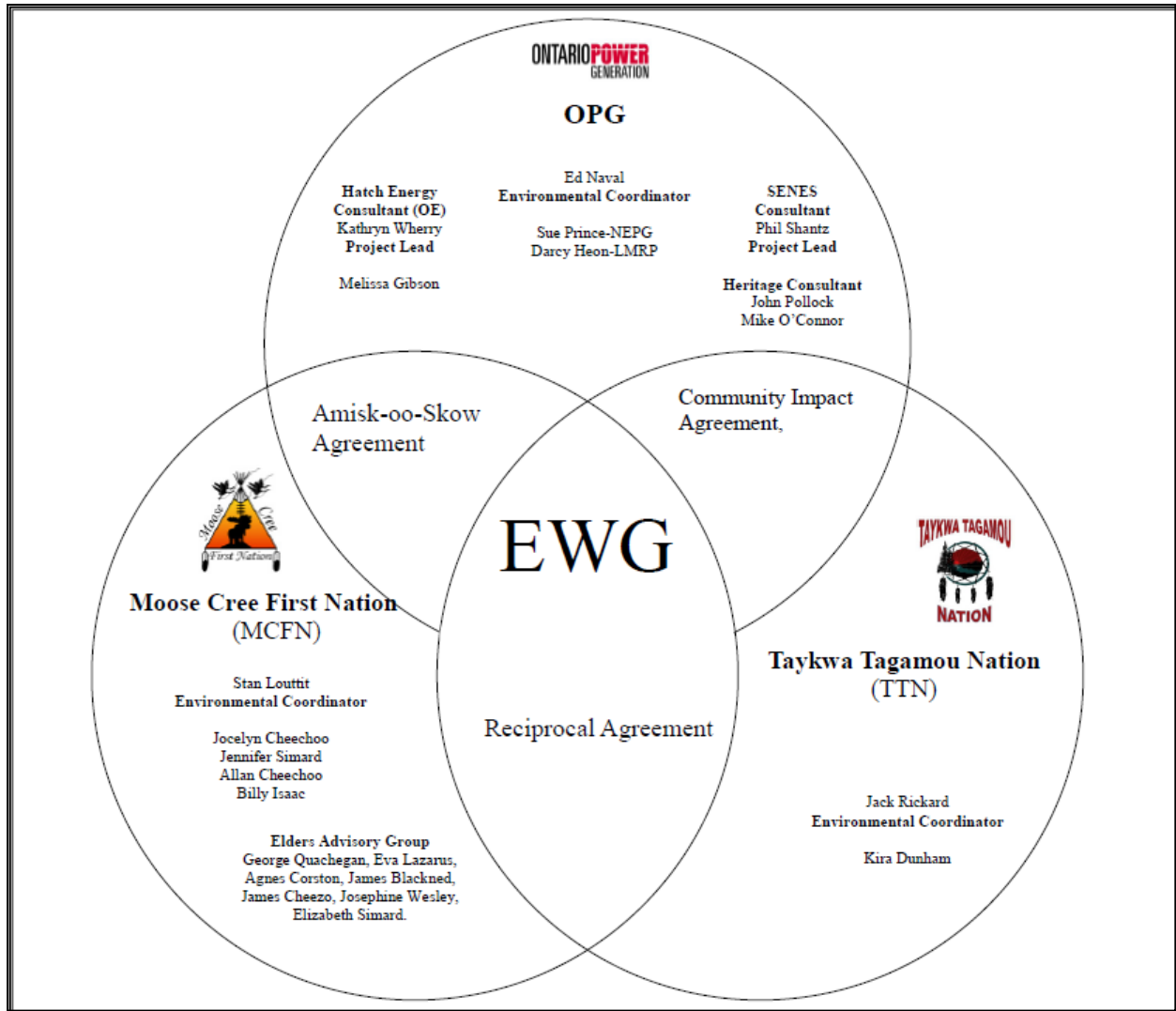
### **Monthly Report**

---

**August 2011**

## ENVIRONMENTAL WORKING GROUP

### Relationship Organizational Chart



**ACTIONS COMPLETED**

- Weekly Environmental Working Group (EWG) and EWG/Kiewit – Alarie, a Partnership (KAP) meetings.
  - The EWG review its Action Items that include priority permit reviews, and deliverables to the Mattagami Extensions Coordinating Committee (MECC).
  - KAP gives EWG a construction up date every week and discusses any upcoming issues and/or urgent permit reviews.
  - Specific items that were discussed are below.
- Preparation for Environmental Effects Monitoring Workshop – Continuing coordination for confirmation of date and availability of presenters. Continuing coordination of logistics for workshop. Draft revision of the Fisheries portion of EEM Workshop Framework and Plan to update and reflect EWG and OPG (fisheries biologists) comments and most recent information.
- Ongoing discussions and review of Smoky Falls Wet Tailrace Excavation Application with stakeholders including the Fish Habitat Compensation Plan. Revision with KAP regarding KAP's proposed changes and the government stakeholder comments and requests to consider and include additional information regarding the construction methods proposed in the Smoky Falls Wet Tailrace Excavation Application.
- Ongoing review and compilation of Traditional Ecological Knowledge (TEK) for the Lower Mattagami River Project.
- Identification and discussion of "Gaps" for the Cost Benefit Analysis and Operations Reports in meeting EA Terms and Condition #4. Ongoing discussions regarding Term and Condition 4.
- Review of Project Environmental Reports required for the month of September 2011.
- Further discussion of Project Environmental Report from month of May 2011, June 2011, July and August 2011 and Term and Condition #4.

**ACTIONS TO BE COMPLETED FOR 2011**

	Jan	Feb	Mar	Apr	May	June	July	Aug	Sept	Oct	Nov	Dec
Draft of Traditional Ecological Knowledge in relation to the Lower Mattagami River Project.												
Environmental Effects Monitoring Workshop												
Environmental Assessment (EA) Variances – EWG Review and Submission to MECC												
EA Terms and Conditions Environmental Compliance Plan – EWG Review and Submission to MECC.												
EWG Terms of Reference (ToR) – Submission to MECC												
EWG Work Plan – Submission to MECC												

	Jan	Feb	Mar	Apr	May	June	July	Aug	Sept	Oct	Nov	Dec
EWG Environmental Due Diligence Audit #1												
Environmental Audit – Accreditation Training												
EWG presentation to the MECC the LMRP "Operations Report" (Condition 4(a) of EA T&Cs).												
EWG present to the MECC "Fish Habitat Assessment Report", and "Baseline Fish Methyl Mercury Report" (Condition 4b. of EA T&Cs).												
EWG present to the MECC "Cost Benefit Analysis of Mitigating and Reducing Adam Creek Spill" (Condition 4(c) and (e) of EA T&Cs).												
EWG present to the MECC the methods and means of ensuring that restrictions on hunting and fishing (Condition 5(a) and (c) of EA T&Cs).												
EWG present to the MECC "Terrestrial Habitat Restoration Downstream of Kipling GS" (Condition 4b. of EA T&Cs).												
EWG present to the MECC a Public Information Program to communicate the results of fish methyl mercury baseline reports (Condition 7(a) and (b) of EA T&Cs).												
EWG present to the MECC the cumulative effects data developed during the Federal EA process (Condition 8(a) and (b) of EA T&Cs).												
EWG present to the MECC the results and recommendations of periodic re-evaluations (Condition 10 of EA T&Cs).												TBD in 2012
EWG present to the MECC "Hydroelectric Generating Facilities Decommissioning Plan" (Condition 11(a) of EA T&Cs).												TBD in 2012
EWG present to the MECC "The Noise Protocol Plan" (Condition 18 of EA T&Cs).												TBD in 2012

**Construction****General**

- Permanent Camp – The Phase 4 dormitory is complete. As of the end of August, 738 of approximately 800 rooms were available on site at the permanent camp.
- Batch Plant – The installation of the concrete reclaimer and the start-up for the south batch plant continued.
- The megadome is being erected at the Smoky Falls site. As of month-end, installation of shelving units and end doors was under way.



Figure 1: Applying shotcrete in Zone 3

**Smoky Falls**

- Concrete pours for the intake and service bay areas continued.
- Stabilization of the rock face on the east side continues.
- The loose rock mass at the Unit 2 / Unit 3 bullnose was removed. Rock anchors are being placed to stabilize the rock in the area.
- Shotcrete operations continued in Zones 2 and 3 (East wall to Powerhouse and east wall from Powerhouse to Diamond Road - Figure 1).
- Excavation operations in the tailrace are progressing (Figure 2).
- The erection of tower cranes #2 and 3 started.



Figure 2: Smoky Falls Wet Tailrace Excavation

**Little Long**

- Concrete work is progressing with various pours complete and others are being prepared for with formwork and rebar installation under way.
- Tar paint was applied to the existing powerhouse concrete wall for damp proofing purposes.

- Installation of the water stop frame at the G3 intake was started.
- The draft tube base pour for Unit 3 occurred on August 31<sup>st</sup> (Figure 3).

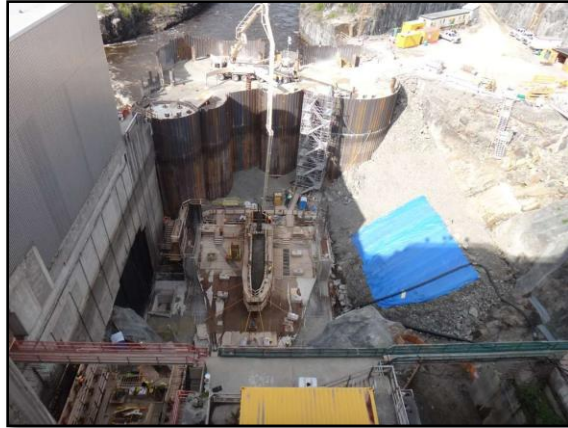


Figure 3: Little Long draft Tube Pour

### **Harmon**

- The cofferdam sheet piles were cut to an equal level.
- Stop logs for the lower section of the pier tie-in were installed and tremie concrete poured into that area.
- A wooden stairway was built from the office location to the access road that leads to the bridge.
- The cofferdam Cell #1 grout curtain was poured.
- The initial grout curtain at the shore tie-in is complete.
- Cofferdam Cell #2 was completed and installation of post tensioning anchors in the Cell is in progress (Figure 4).



Figure 4: Harmon Cofferdam



Figure 5: Kipling Cofferdam Cell # 1

### **Kipling**

- The sectional gate sections at the G3 intake have been installed.
- All sheet piles have been installed for cofferdam Cell #1. Divers continue to clean the bottom periphery of the cell (Figure 5).
- Temporary lighting has been installed on Cell #1 to facilitate work at night.

**Monthly Summary – August 2011**

SPILLS			
No. of Spills:		12; Spill Reports 140-151 (see Figure 6 for LMRP spills breakdown).	
Classification of Spills:		<u>Project Classification</u> Minor – 8    Moderate – 2    Major – 0    To Water - 2  <u>MOE Classification</u> Non-reportable - 10 Reportable to MOE <ul style="list-style-type: none"><li>- Class C – 2</li><li>- Class B – 0</li><li>- Class A – 0</li></ul>	
<u>Reportable Spills</u>			
No.	Quantity /Product Spilled	Spill Site	Reason for being Reportable
1	1 L/Gasoline	Harmon Cofferdam	In-water
2	5L/Hydraulic Oil	Harmon Cofferdam	In-water
Project Classification (KAP) Minor: ≤ 10L Moderate: Between 10L and 100L Major: ≥100L To Water: Any amount is reportable to the MOE (See Figure 7: KAP Spills Response Flowchart)			MOE Classification Non-reportable: < 100L Reportable to MOE <ul style="list-style-type: none"><li>• Class C - Less Serious</li><li>• Class B – Serious</li></ul> Class A – Very Serious



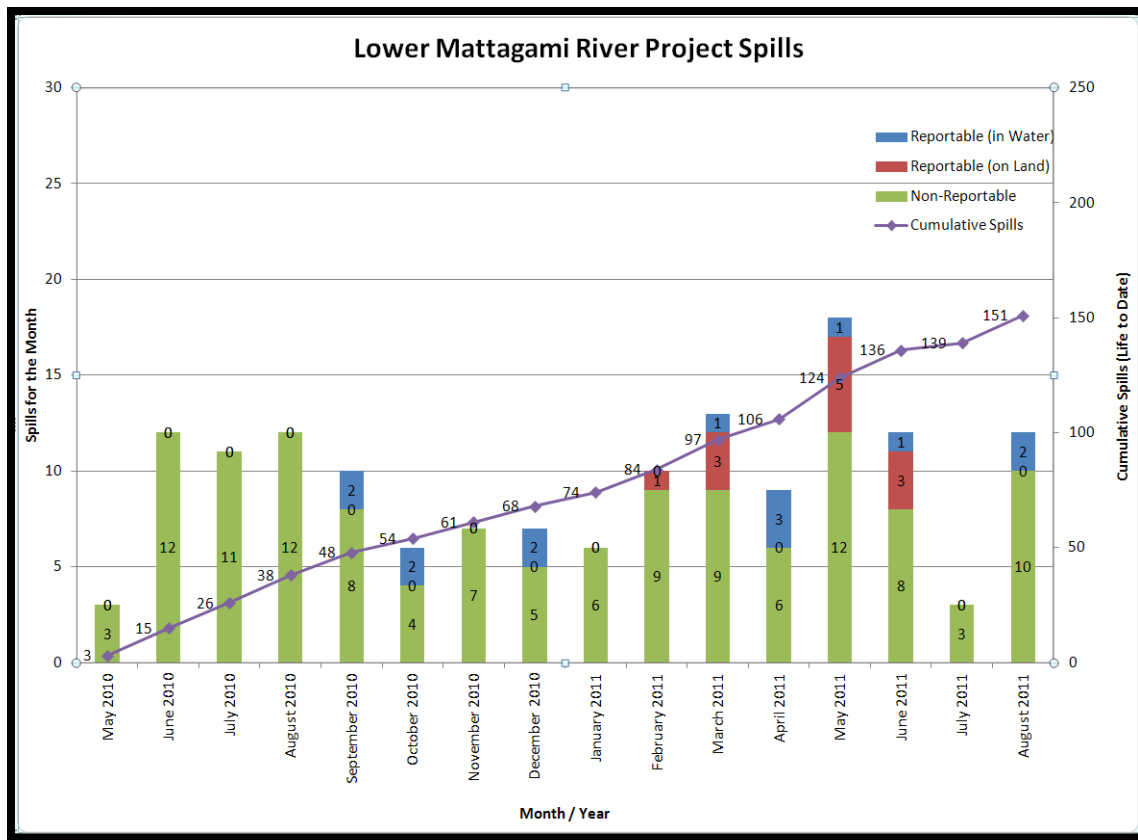


Figure 6: Lower Mattagami River Project spills

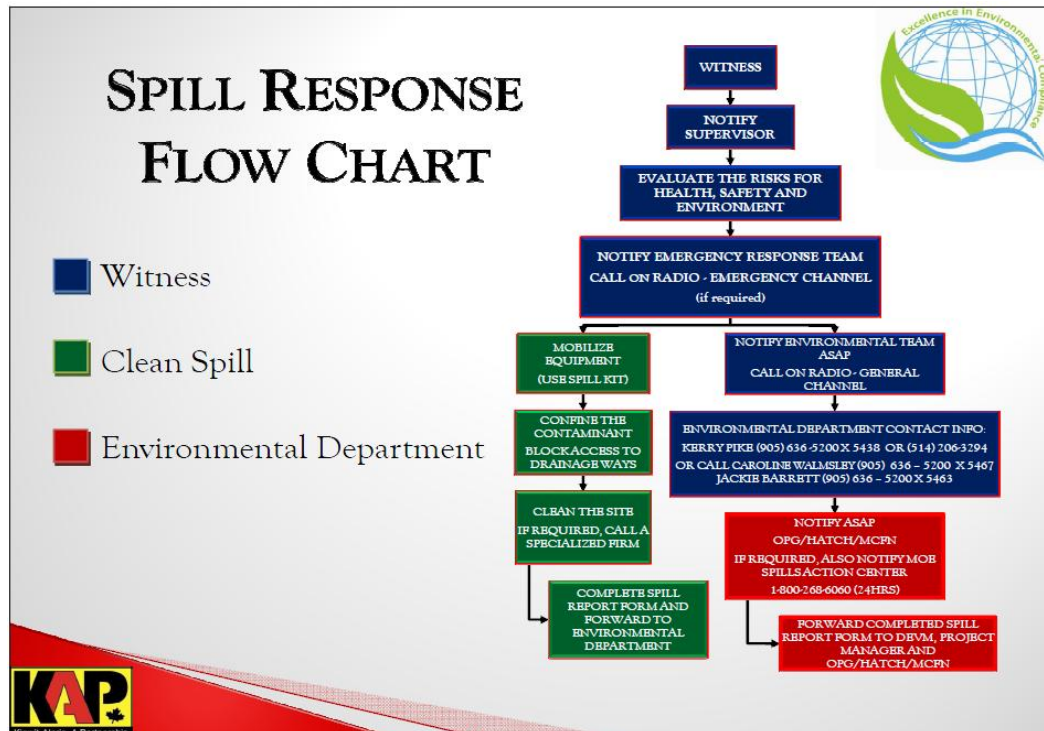


Figure 7: KAP Spills Response Flowchart



<b>PERMIT AND APPROVAL REVIEW</b>			
No. Reviewed:	3	List:	<ul style="list-style-type: none"><li>• Work Permit Application for Work on Permanent Transmission Line</li><li>• Smoky Falls Wet Tailrace Excavation</li></ul>
No. Sent to KAP:	2	List:	<ul style="list-style-type: none"><li>• Work Permit Application for Work on Permanent Transmission Line</li><li>• Smoky Falls Wet Tailrace Excavation</li></ul>
<b>REQUESTS FOR INFORMATION (RFIs)</b>			
No. Reviewed:	1	List:	RFI-OWN - Smoky Falls Powerhouse - Conditions of Lakes and Rivers Improvement Act Approval.
No. Sent to KAP:	0	List:	N/A
See figures 8 to 11 below for site location of the permits that have been or are pending approval.			

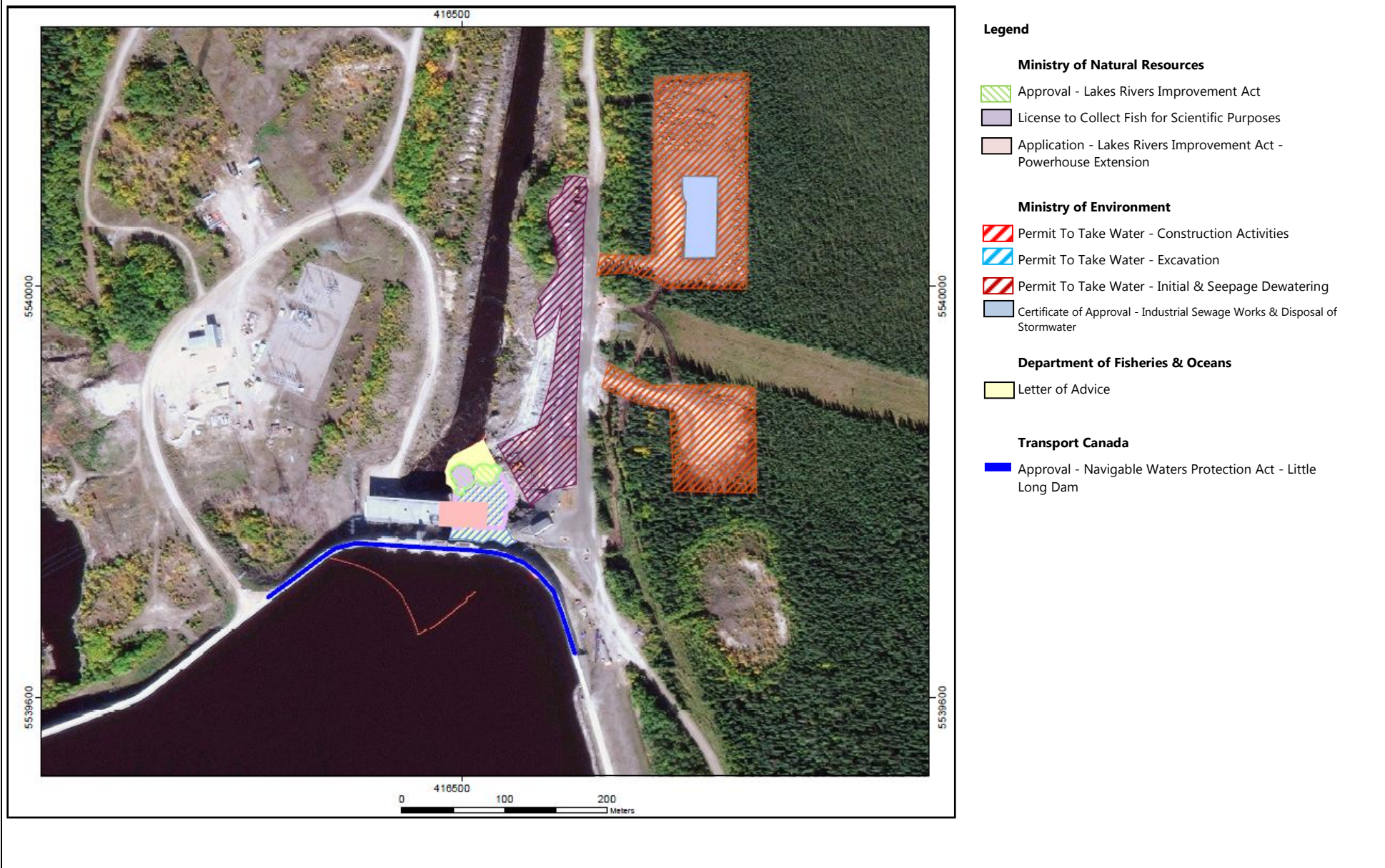
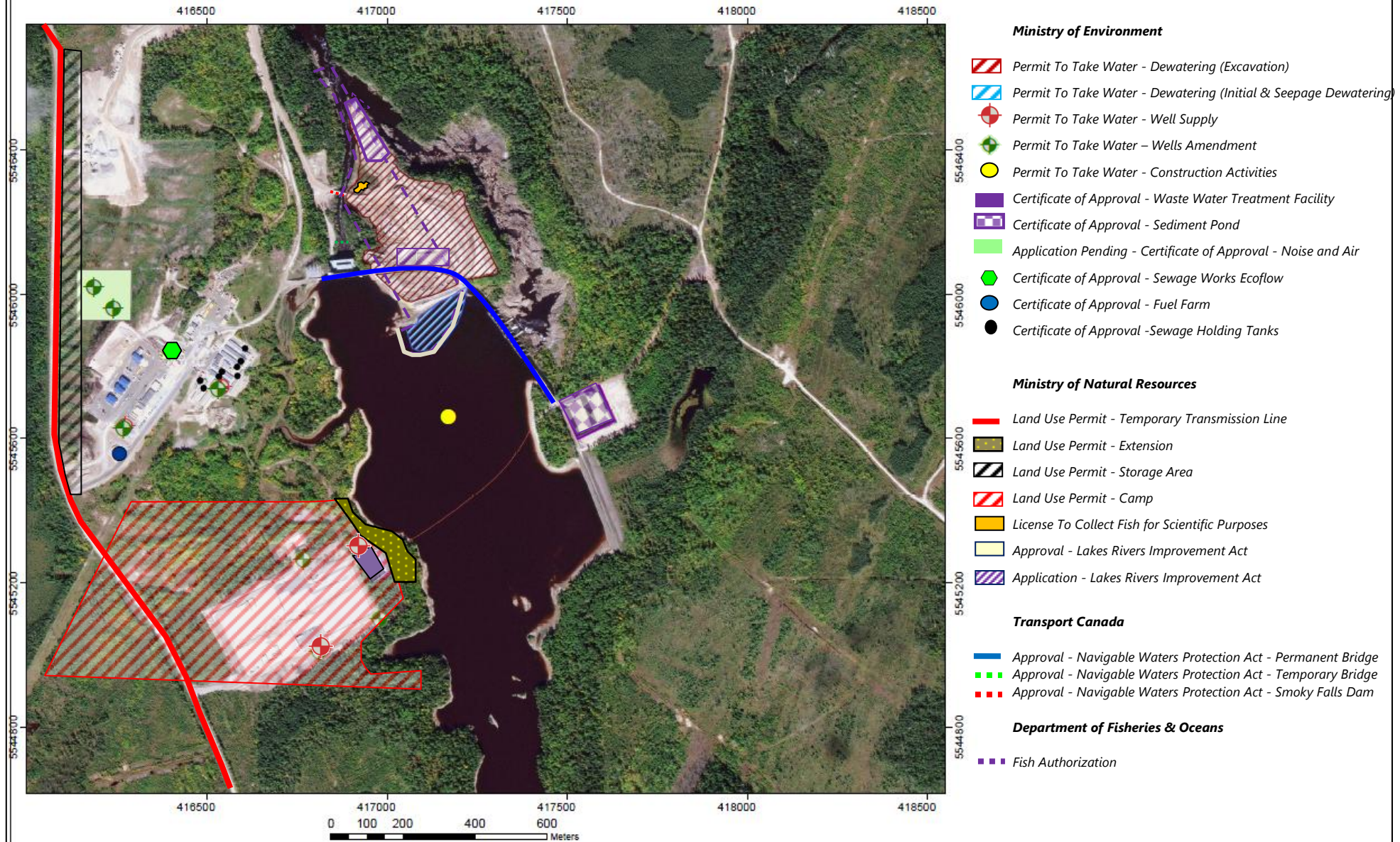
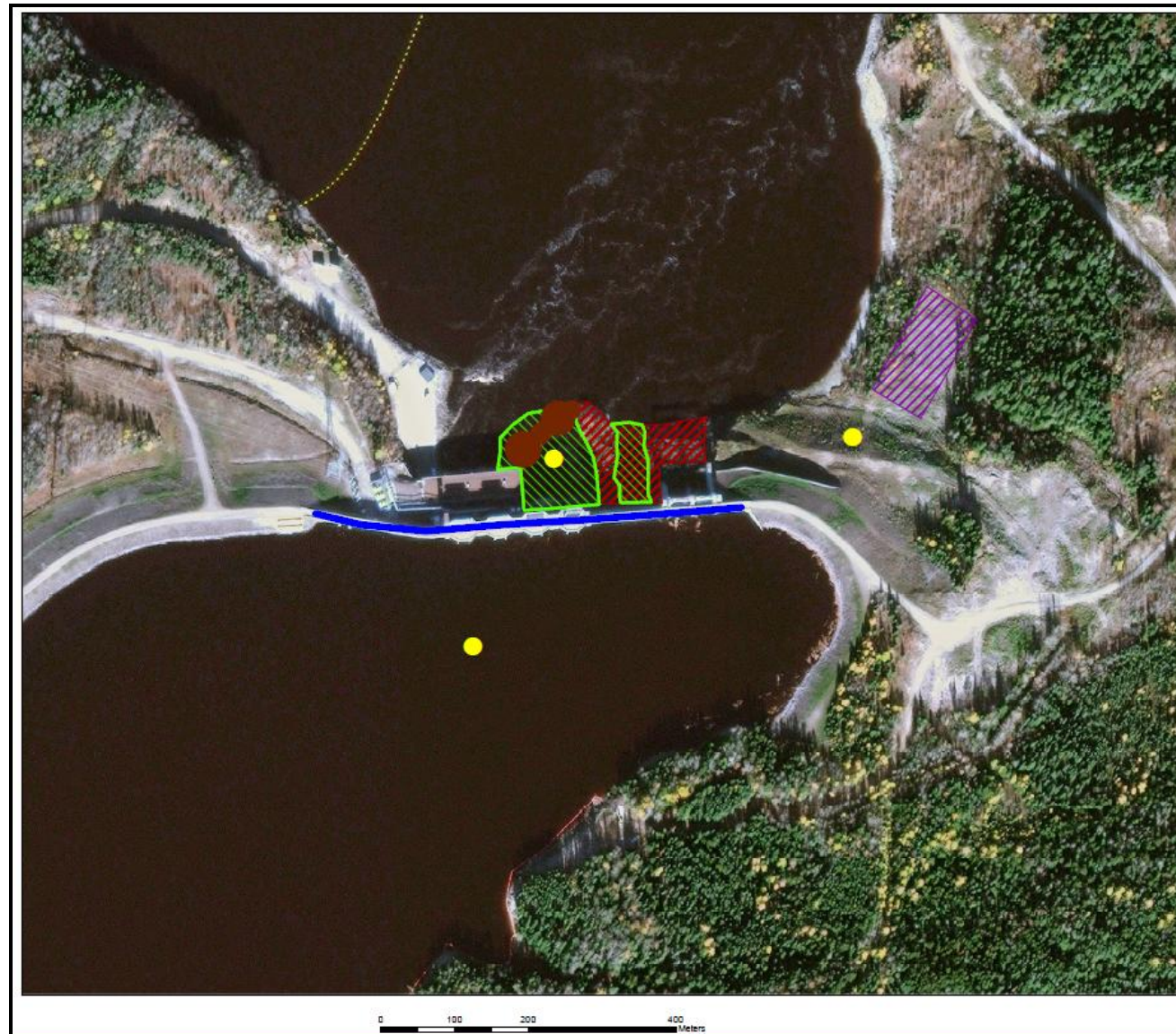
**Figure 8: Little Long GS - Permits**



Figure 9: Smokey Falls GS - Permits





**Figure 11: Kipling GS - Permits****Legend****Ministry of Natural Resources**

Approval Phase 1A - Marine Access Pad

Application Pending - Lakes Rivers Improvement Act - Phase II

**Department of Fisheries & Oceans**

Letter of Advice

**Ministry of Environmental**

Application Pending for Certificate of Approval - Sediment Pond

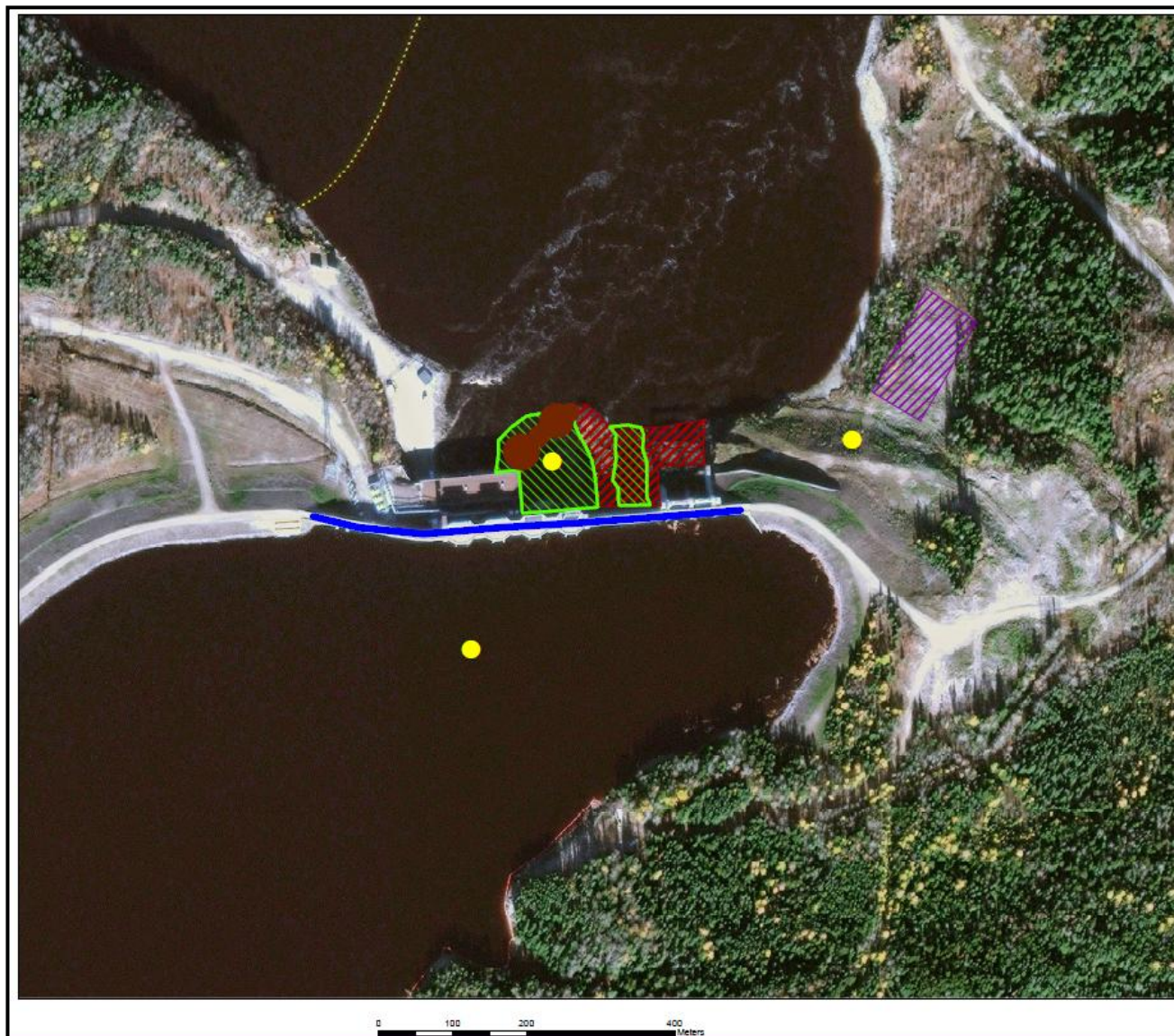
Permit To Take Water - Dewatering



**Transport Canada**

Approval - Navigable Waters Protection Act - Kipling Dam




Figure 11: Kipling GS - Permits



**Legend****Ministry of Natural Resources**

-  Approval Phase 1A - Marine Access Pad
-  Application Pending - Lakes Rivers Improvement Act - Phase II


**Department of Fisheries & Oceans**

-  Letter of Advice

**Ministry of Environmental**

-  Application Pending for Certificate of Approval - Sediment Pond
-  Permit To Take Water - Dewatering

**Transport Canada**

-  Approval - Navigable Waters Protection Act - Kipling Dam

**Issues and Concerns**

- The teleconferencing capabilities of the MECC should be improved when the meetings are held outside of the Moose Cree Offices in Timmins.

Action Required: Recommend to the MECC that they purchase a specialized teleconferencing phone.

- The MCFN members of the EWG expressed concerns with the fish salvage operations at the Kipling Cofferdam. The baited lines cause unnecessary harm. From a cultural perspective, the Elders Advisory Council have advised that the use of bait lines stop, due to the practice being in conflict with cultural protocols of care, sensitivity and respect when handling fish.

Action Required: Recommend to KAP alternative ways to conduct fish salvage operations that do not require the use of baited hooks.