



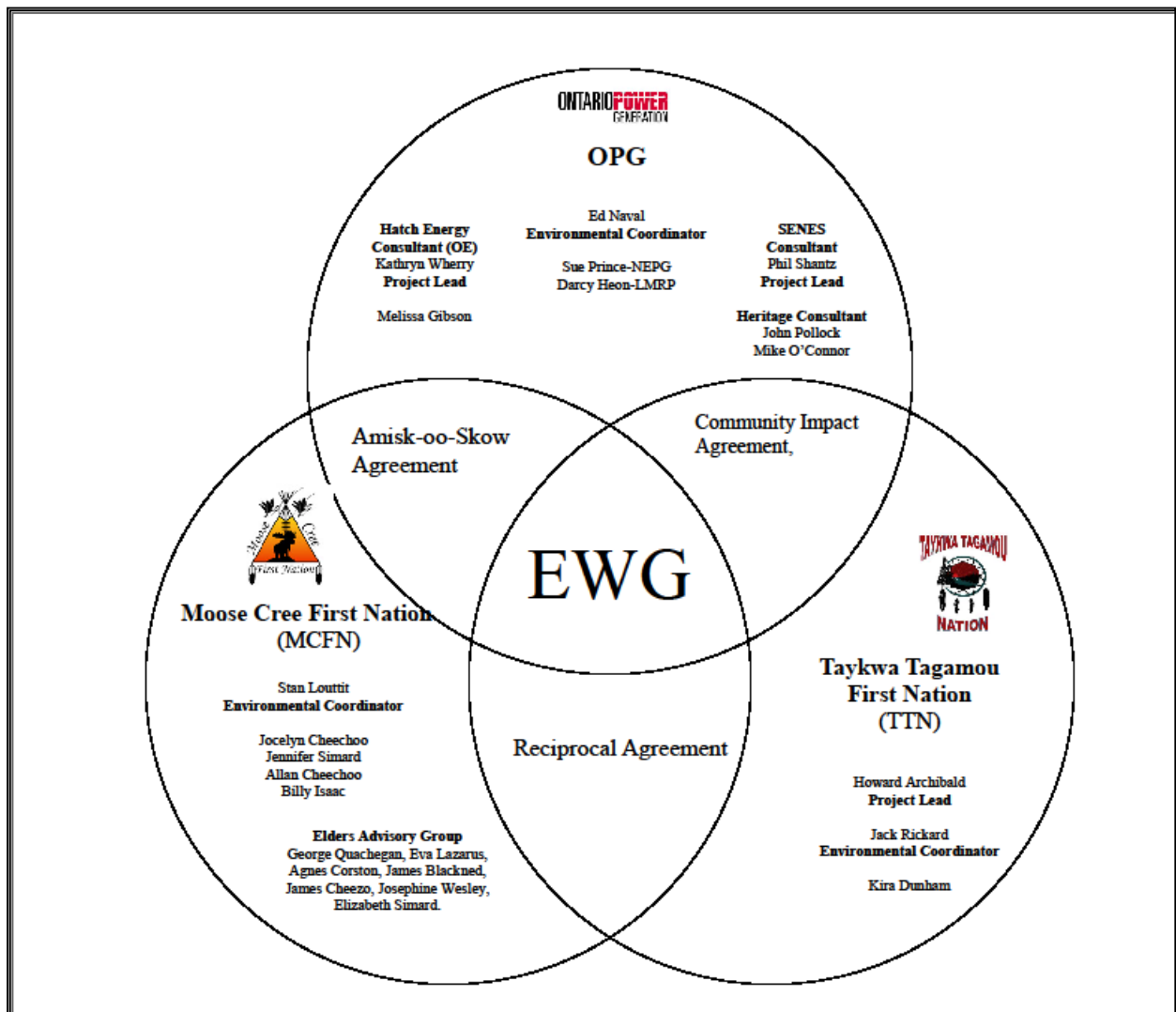
Environmental Working Group

Monthly Report

April 2011

ENVIRONMENTAL WORKING GROUP

Relationship Organizational Chart



ACTIONS COMPLETED

- Weekly Environmental Working Group (EWG) and EWG/Kiewit – Alarie, a Partnership (KAP) meetings.
 - The EWG review its Action Items that include priority permit reviews, and deliverables to the Mattagami Extensions Coordinating Committee (MECC).
 - KAP gives EWG a construction up date every week and discusses any upcoming issues and/or urgent permit reviews.
 - Specific items that were discussed are below.
- Preparation and completion of the Environmental Audit (Mar 29, 30). Continuing analysis and development of report.
- Rescheduling of Environmental Effects Monitoring Workshop (EEM) due to unavailability of aquatic expert, in addition to continued coordination of logistics for workshop and confirmation of presenters/EWG attendee list. Revision of the EEM Workshop Framework and Plan to update and reflect EWG comments and most recent information.
- Discussions and review of Smoky Falls Fish Habitat Compensation Plan Revision with KAP regarding KAP's proposed changes to the current fish habitat compensation plan.
- Ongoing review and compilation of Traditional Ecological Knowledge (TEK) for the Lower Mattagami River Project.
- Determination of Project Environmental Reporting review schedule for EWG and presentation of the Reports to the MECC.
- Review of Project Environmental Reports required for the month of May 2011.

ACTIONS TO BE COMPLETED FOR 2011

	Jan	Feb	Mar	Apr	May	June	July	Aug	Sept	Oct	Nov	Dec
Draft of Traditional Ecological Knowledge in relation to the Lower Mattagami River Project.												
Environmental Effects Monitoring Workshop												
Environmental Assessment (EA) Variances – EWG Review and Submission to MECC												
EA Terms and Conditions Environmental Compliance Plan – EWG Review and Submission to MECC.												
EWG Terms of Reference (ToR) – Submission to MECC												
EWG Work Plan – Submission to MECC												
EWG Environmental Due Diligence Audit #1												
Environmental Audit – Accreditation Training												
EWG presentation to the MECC the LMRP "Operations Report" (fulfills Condition 4(a) of EA T&Cs).												
EWG present to the MECC "Fish Habitat Assessment Report", and "Baseline Fish Methyl Mercury Report" (fulfills Condition 4b. of EA T&Cs).												
EWG present to the MECC "Cost Benefit Analysis of Mitigating and Reducing Adam Creek Spill" (fulfills Condition 4(c) and (e) of EA												

	Jan	Feb	Mar	Apr	May	June	July	Aug	Sept	Oct	Nov	Dec
T&Cs).												
EWG present to the MECC the methods and means of ensuring that restrictions on hunting and fishing (fulfills Condition 5(a) and (c) of EA T&Cs).												
EWG present to the MECC "Terrestrial Habitat Restoration Downstream of Kipling GS" (fulfills Condition 4b. of EA T&Cs).												
EWG present to the MECC a Public Information Program to communicate the results of fish methyl mercury baseline reports (fulfills Condition 7(a) and (b) of EA T&Cs).												
EWG present to the MECC the cumulative effects data developed during the Federal EA process (fulfills Condition 8(a) and (b) of EA T&Cs).												
EWG present to the MECC the results and recommendations of periodic re-evaluations (fulfills Condition 10 of EA T&Cs).												
EWG present to the MECC "Hydroelectric Generating Facilities Decommissioning Plan" (fulfills Condition 11(a) of EA T&Cs).												
EWG present to the MECC "The Noise Protocol Plan" (fulfills Condition 18 of EA T&Cs).												

Construction Update

General

- Permanent Camp Phase 1 – By the end of April Phases 2 and 3 (Dorms 6 through 14) were on site and in the process of being assembled. The kitchen was declared in-service as planned on April 1st.
- A contract for the Canadian manufactured Phase 4 of the permanent camp was drafted, with delivery expected in June.
- Batch Plant commissioning has continued throughout April and is nearing completion.

Smoky Falls

- Ice removal from the cofferdam area was completed and excavation within that area started (see Figure 1).
- Smoky Falls Island excavation continues of various elevations within the powerhouse, tailrace, and intake footprint. Overburden removal continues in concentrated area to the right side of the powerhouse footprint where rock was originally anticipated (see Figure 2).
- On April 12th, a rock slide occurred in the service bay area. Clean-up took 2 weeks. The cause was identified as less than adequate geotechnical conditions, and actions are being taken to stabilize the slope. Geotechnical specialists from SLI were brought in to ensure this work is done properly, and to identify any other potential problem areas.
- Concrete pouring for tower crane pads is under way.



Figure 1: Excavation at Smoky Falls cofferdam



Figure 2: Overview of work at Smoky Falls powerhouse area

Little Long

- Cellular cofferdam shore and pier tie-ins were completed and dewatering began on April 20th. The cofferdam was declared successfully dewatered by KAP on April 26th (see Figure 3).
- Removal of logs and debris from the G3 intake began in preparation for construction.



Figure 3: Dewatering at Little Long cofferdam

Harmon

- MNR approval for cofferdam plans and specifications was received.
- The tower crane was erected in preparation for construction.
- Cofferdam Cell #1 assembly started and is progressing (see Figure 4).



Figure 4: Working on the template assembly at Harmon

Kipling

- The spillway deflector wall installation started. Bracing beams were erected and anchor holes were drilled in bedrock (see Figure 5).
- MNR approval (LIRA) for the spillway deflector wall was received.
- Anchor holes for the tower crane were drilled



Figure 5: Spillway deflector wall at Kipling

Monthly Summary – April 2011

SPILLS			
No. of Spills:		9; Spill Reports 98 - 106	
Classification of Spills:		<u>Project Classification</u> Minor – 5 Moderate – 1 Major – 0 To Water - 3	
		<u>MOE Classification</u> Non-reportable - 6 Reportable to MOE - Class C – 3 - Class B – 0 - Class A – 0	
PERMIT AND APPROVAL REVIEW			
No. Reviewed:	2	List:	Waste Management Plan Revision 2 Smoky Falls - Wet Tailrace Excavation - design review
No. Sent to KAP:	1	List:	Waste Management Plan Revision 2
REQUESTS FOR INFORMATION (RFIs)			
No. Reviewed:	1	List:	Waste Concrete Storage
No. Sent to KAP:	1	List:	Waste Concrete Storage

Figure 1: Little Long GS - Permits**Legend****Ministry of Natural Resources**

- Approval - Lakes Rivers Improvement Act
- License to Collect Fish for Scientific Purposes

Ministry of Environment

- Permit To Take Water - Construction Activities
- Permit To Take Water - Excavation
- Permit To Take Water - Initial & Seepage Dewatering
- Certificate of Approval - Industrial Sewage Works & Disposal of Stormwater

Department of Fisheries & Oceans

- Letter of Advice

Transport Canada

- Approval - Navigable Waters Protection Act - Little Long Dam

Figure 2: Smokey Falls GS - Permits

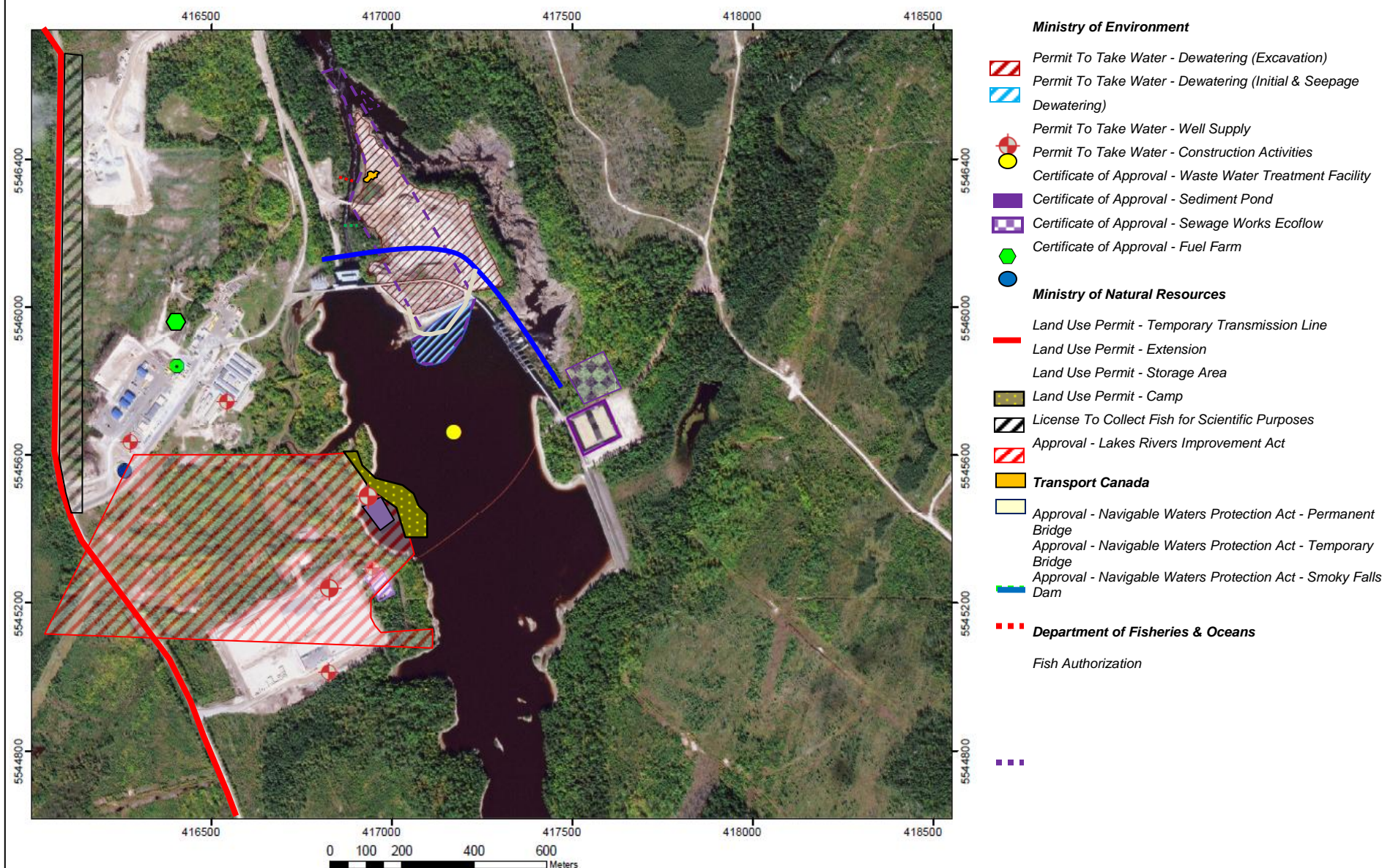
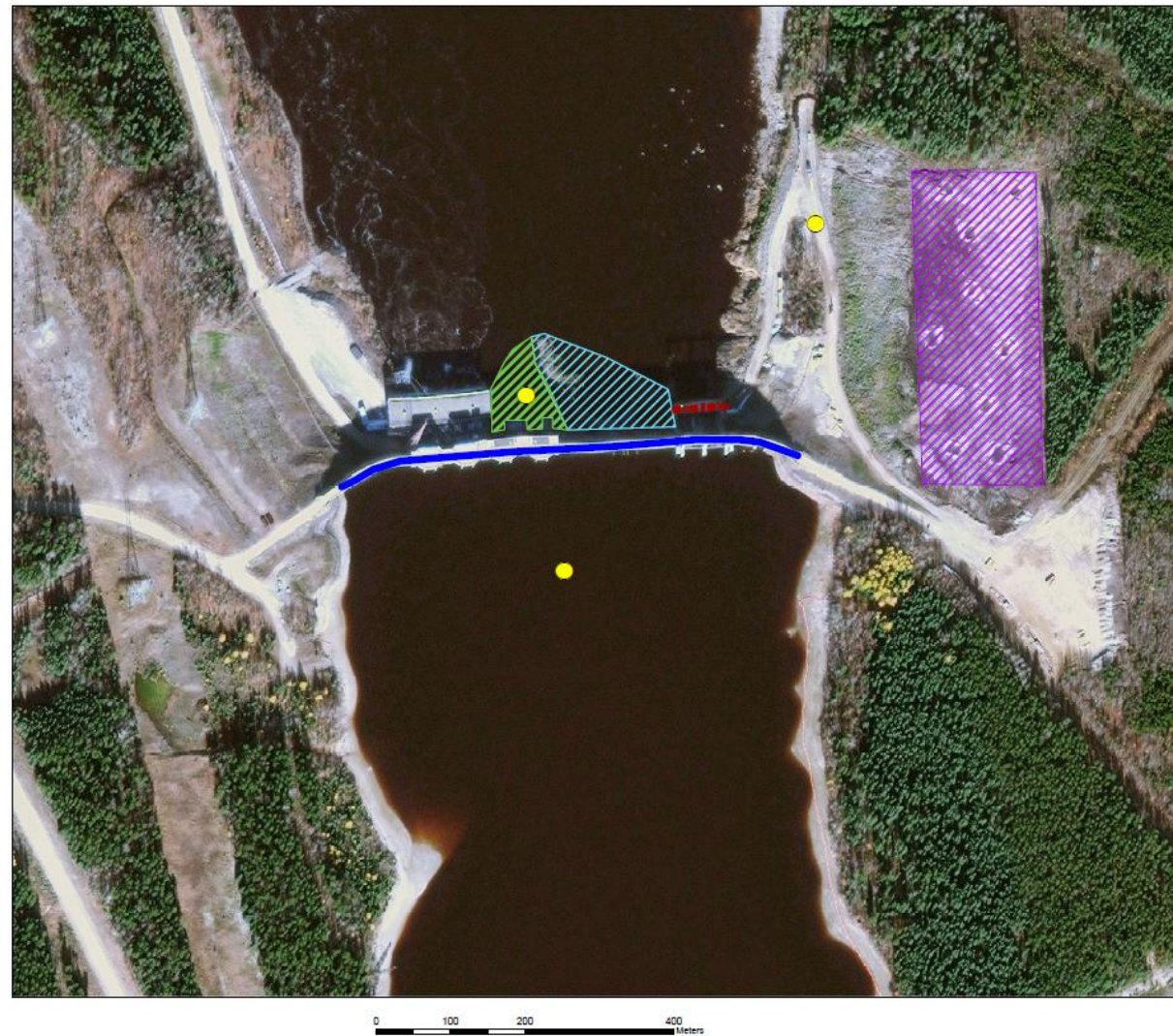




Figure 3: Harmon GS - Permits**Legend****Ministry of Natural Resources** Approval - Lakes Rivers Improvement Act**Ministry of Environment**

Application Pending - Certificate of Approval -

 Sediment Pond

Permit To Take Water - Dewatering

**Department of Fisheries & Oceans**

Letter of Advice

**Transport Canada**

Navigable Waters Protection Act

Approval - Navigable Waters Protection Act -


 Temporary Bridge

Figure 4: Kipling GS - Permits



Legend

Ministry of Natural Resources

Approval Phase 1A - Marine Access Pad

Department of Fisheries & Oceans

Letter of Advice



Ministry of Environmental

Application Pending for Certificate of Approval -
Sediment Pond



Permit To Take Water – Dewatering

Transport Canada

Approval - Navigable Waters Protection Act - Kipling
Dam



Issues and Concerns
<ul style="list-style-type: none">• Due to the unavailability of the aquatic expert, the Environmental Effects Monitoring Workshop had to be postponed. <p>Action Required: The EWG will look for an alternate date to reschedule the Environmental Effects Monitoring Workshop, as well as find a new aquatic expert to lead the aquatic sector.</p>